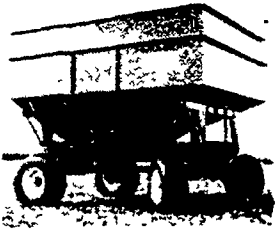


Check these good buys on new and used equipment

NEW MODEL 190 McCURDY GRAVITY BIN



Less Running Gear
ONLY \$516

Haul Away On Your Pickup Truck And
BUY FOR ONLY \$497⁰⁰

RADIAL REAR TRACTOR TIRES

- 20.8x38...8 Ply **\$575**
- 18.4x38...8 Ply **\$485**

NEW TAKE OFFS (Non-Radial)

- 18.4x34...6 Ply **\$275**
- 16.9x30...6 Ply **\$255**



Good Used 1977 Case 1830 Uniloader. Approx. 1033 Hrs. 7.00x15 tires, 60" wide bucket and manure fork

ONLY \$6,900

SPECIAL DISCOUNTS ON NEW RENTAL SOIL SAVERS

- Case 7 Shank Soil Controller, Rental, 8'9" Cutting Width S/N 1652680, For **\$4,325**
- Case 7 Shank Controller, Rental, 8'9" Cutting Width, S/N 1657939, For **\$5,189**
- Bush Hog Soil Hog 5 Shank Rental, 6'8" Cutting Width **\$3,450**

USED HARVESTING SPECIALS

Forage Harvesters That Are Ready For Corn

- Hesston 7020, 540 PTO, 1 Row Corn Head, 5' Hay Pickup, Manual Controls **SALE PRICE \$2780⁰⁰**
- Gehl 600, 540 PTO, 2 Row Narrow Corn Head, Manual Controls, **SALE PRICE \$1100⁰⁰**
- New 700 Gehl Harvester, 540 PTO, Manual Controls w/Used 2 Row Corn Head Old Style **SALE PRICE \$6180⁰⁰**
- Gehl 1200, 1000 RPM, Hyd. Controls, Hyd. Knife Sharpener w/3 Row Head, Excellent **SALE PRICE \$10,800⁰⁰**

FORAGE BOXES AND BLOWERS

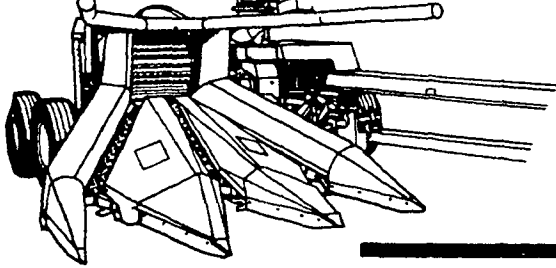
- Cobey 6x16 3 Beater & Roof w/12 Ton Tandem Gear **SALE PRICE \$1975**
- Papec 2 Beater 4x14, No Roof, w/Grove Gear **SALE PRICE \$890**
- Case 100 Forage Hopper Blower **SALE PRICE \$595**
- New Gehl FB 99 w/Heavy Duty 540 PTO Shaft, Serial #18228 & #2442 **CASH PRICE**

CHISEL PLOWS - 3 PT. HITCH

- New Case #1805 5 Shank Chisel Plow w/Twisted Shovels **\$949**
- Used Case 10 Shank Chisel Plow w/Gauge Wheel **\$1285**

NEW FORAGE BOXES
High Quality And Economical For The Price Conscious Farmer
NEW GEHL MODEL 640

IN STOCK
Take Delivery **NOW!**



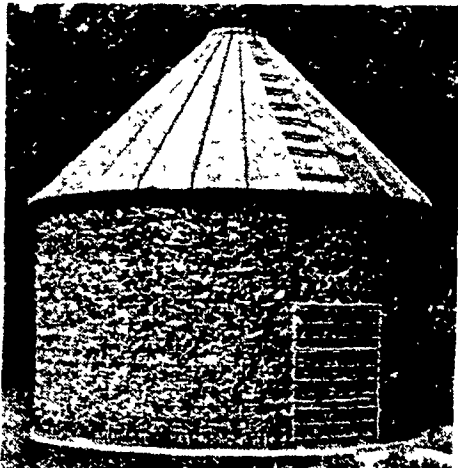
Delayed Payment Till
April 1, 1984!

GEHL®

With 40% down in cash or trade-in you can put a new Gehl forage harvester to work **NOW** with a final due date of April 1, 1984! No curtailments! No interest! Just a great Gehl forage harvester for high capacity, energy efficient chopping. Check out the features! Check out the sizes!

Stop by now and we'll give you full program details.

BEHLEN CORN CRIBS



FIRST COME FIRST SERVE
on a limited supply of corn cribs at old prices

Did You Know Behlen Corn Cribs are No. 4 gauge, which is heavier than most other brands and helps to prevent bulging of sides.

- Model FXL-15 865 Bushel plus extra capacity in roof area
- Model-EL - 101085 bushels plus extra capacity in roof area
- Model-EXL-15 1515 bushels plus extra capacity in roof area

McCurdy Short Turn Radius Wagons

In stock with Adjustable Quick Hitch. Your Choice of wheel width 6", 8", 10"

- 8 ton **\$670**
- 10 ton **\$725**
- 12 ton **\$1057**

Price is less tires - **KNOCK DOWN**

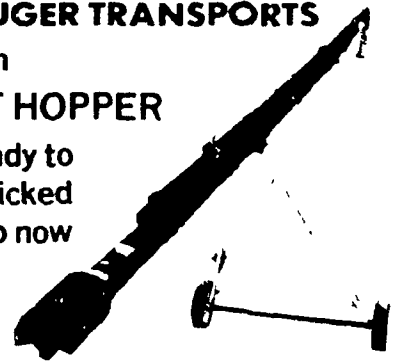
THIS WEEK'S EXTRA SPECIAL SPEED KING AUGER TRANSPORTS

with

FLEXI-BOOT HOPPER

8x46 PTO Ready to
Reg. \$2,071 be picked
up now

SALE \$1595



NEW ~~Case~~ HEAVY DUTY MODEL 1805 3 PT. HITCH CHISEL PLOW

5 Shank, 1 1/4" x 32 Spring

with Curved Shovels

ONLY \$949⁰⁰



OPEN THROAT DESIGN!

LOOK AT THIS!

Buy A NEW ROUND BALER For The Price Of A Good Used Baler

The Model 875 delivers all the solid performance features of its big brother and a bale that can pack a 1000 lb punch (hay) All wrapped in a single easy to handle package for dairy and beef operations. This compact baler makes 15 to 25 bales per hour



\$8000 Value **\$5900** Limited Offer For Only

— ONLY ONE LEFT —

POTATO DIGGING TIME IS HERE!

BUY NOW - GET 10% OFF
DIG YOUR POTATOES THE EASY WAY!

They Do Work! The 3 PT HITCH, 1 ROW

POTATO PLOW
Heavy Angle Tow Bar

- FRAME Welded Construction
- SHANK 1"x4"
- HITCH - Standard Category 1
- BUSHER SHAPE

\$97.85
COMPLETE LESS 10%

In Stock



TRUCKLOAD & DISCOUNT SALE ON

Case MODEL 56L & 66L FARM LOADERS

Just Arrived... The Earlier You Buy, The More You Save!

Two quick-attach loaders for maximum job versatility Match up these front end loaders with a Case 90 Series General Purpose Tractor — high platform and low profile models, and models with front wheel drive attachment. You'll have loader versatility that saves time every time you use it.

The model 56L loader fits Case 1190, 1290 or 1390 tractors. The 66L teams up with 1390, 1490 or 1690. Whatever the combination, you've got a strong, quick-attach/detach fast-cycle front end loader that gets work done in a hurry so you can get on to the next job.

Heft for heavy jobs. Both models incorporate a rugged box-welded loader frame that attaches to the tractor's rugged box section main frame.

Powerful hydraulics. Two loaders with double-acting lift cylinders handle loads from 1800 up to 2200 lbs. (816 to 998 kg.) Heights 120 up to 130" (305 to 330 cm). Double-acting bucket cylinders assure heavy down-pressure for digging, rugged breakout force for the heavy material.

Standard equipment • Double-acting lift cylinders • Double-acting bucket cylinders • Hydraulic control kit with 2-spool valve, fittings, quick disconnects Model 66 only • Wire braid hoses • Self-storing parking stands • Tubular box frame.

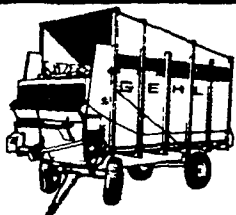
Call Now For A Good Deal

* Specifications based on
56L 1290 equipped with 16 9x30 rear tires 7 50x16 front tires and 72" (1 829 mm) bucket less tines
66L 1490 equipped with 18 4x30 rear tires 11Lx15 front tires and 72" (1 829 mm) bucket less tines



56L & 66L LOADER SPECIFICATIONS*

	56L for 1190, 1290, 1390	66L for 1490, 1690
Lift height	1135 (2 883 mm)	1268 (3 221 mm)
Lift capacity	1880 lbs (853 kg)	2100 lbs (953 kg)
Breakout	2550 lbs (1 157 kg)	4775 lbs (2 166 kg)
Reach at max height	30 (762 mm)	43 (1 092 mm)
Dump angle	47	45
Rollback angle	17	12
Dig depth	197 (500 mm)	105 (267 mm)
Hydraulic cylinders	Double acting	Double acting
Raise time seconds	5.9	5.0
Lower time seconds	2.9	3.5
Dump time seconds	4.8	3.6
Rollback seconds	3.1	2.7



- 4 Ft. Sides (No Roof)
- 16 Ft. Long
- Rubber Trough Extension
- 2 Beaters Serial #3439
(Running Gear not in price)

CASH PRICE ONLY \$3,299

BINKLEY & HURST BROS., INC.

133 Rothsville Station Rd., Lititz, PA 17543

PH: (717) 626-4705

Hours: Daily 7 AM to 5 PM; Sat. 7 AM to 11:30 AM