

# Livestock market and auction news

## Carlisle Auction

Carlisle, Pa.

Tuesday, August 30

Report supplied by auction

**CATTLE:** Steers were 2.00 lower; Heifers were 1.50 lower; Cows were steady and Fat Bulls were steady. Steers—Good 54.00-55.75; Standard 50.00 down; Holsteins 48.00 down. Heifers—Standard 41.25-43.50; Utility 40.00 down. Cows—Utility & Commercial 38.85-43.25; Cutter 36.25-40.00; Canner & Low Cutter 32.25-36.00; Shells 32.00 down. Fat Bulls—Good to 52.75; Standard 43.75-45.50.

**FEEDER CATTLE:** Steers were 5.00 lower; Heifers were 3.00 lower and Bulls were 2.00-3.00 lower. Steers—Medium 190-255 lbs. 44.00-50.00; 360-490 lbs. 40.00-46.00; 695-755 lbs. 43.00-48.00; 325-500 lbs. 38.00-42.00, 670-860 lbs. 36.00-39.00. Heifers—Medium 330-465 lbs. 35.00-41.00; 530-570 lbs. 36.00-42.00; 615-635 lbs. 44.00-45.00; Utility 615-645 lbs. 32.50-34.00. Bulls—Good 570 lbs. 50.00; Medium 550-595 lbs. 40.00-43.00; Medium 720-775 lbs. 37.50-40.00.

**CALVES:** Vealers were 8.00 higher and Back to the Farm Calves were 8.00 higher for Hol. Bulls and 9.00 higher for Hol. Heifers. Vealers—Choice 75.00-84.00; Good 60.00-75.00; Standard 55.00-65.00; Standard and Light 55.00 down (200-300 lbs. 48.00 down). Farm Calves—Hol. Bulls 80.00-85.00. Hol. Heifers 80.00-86.00.

**HOGS:** 3.00-4.00 lower; US No. 1-2 47.85-50.00; No. 1-3 45.10-48.00;

No. 2-3 43.35-46.85. Sows—Steady. US No. 1-3 35.25-43.00; No. 2-3 32.50-37.00. Boars—2.75 lower. 30.25-31.25. **FEEDER PIGS:** US No. 1-3 15-25 lbs. 11.00-15.00 head; 30-35 lbs. 16.00-24.00 head; 40-50 lbs. 20.00-24.00 head.

**SHEEP:** Lambs—8.00 lower. Choice 44.00-47.00; Good 37.00-41.00; Utility 36.00 down. Ewes—19.00-25.00. Goats—15.00-35.00 head; Large 37.50-56.30 head.

Special Graded Pig Sale Friday, Sept. 9th 1:30 PM.

## Greencastle Livestock

Greencastle, Pa.

Monday, August 29

Report supplied by auction

**CATTLE:** Butcher Steers—Choice few up to 60.00; Medium-Good 47.00-58.50. Butcher Heifers—Choice few up to 59.00; Medium-Good 43.00-57.50. Butcher Cows—Utility-Good 37.00-40.00, few to 42.00; Canners and Cutters 34.00-41.00; Shells down to 30.00. Butcher Bulls—Medium-Good 46.00-56.00. Stock Steers—Medium-Good up to 56.00. Stock Heifers—Medium-Good up to 50.00.

**CALVES:** Medium Good Calves—160-220 lbs. 55.00-70.00; 125-160 lbs. 50.00-65.00; 100-120 lbs. 45.00-60.00; 80-100 lbs. 40.00-55.00. Holstein Bull Calves—up to 90.00. Holstein Heifer Calves—up to 65.00. Light and Green Calves—down to 35.00.

**SHEEP AND LAMBS:** Medium-Good Lambs—35.00-48.00. Butchering Ewes and Bucks—10.00-15.00.

**HOGS:** Good-Choice Butcher Hogs—190-225 lbs. 45.50-59.50; 225-250 lbs. 48.00-49.50. Good-Choice Butcher Sows—400 lbs., down up to 40.50; 400 lbs., up up to 39.50. Heavy Boars—26.00-29.50. Pigs—per head—9.00-27.00.

Sale every Monday 6:30 p.m.

## Peoria Cattle

Thursday, Sept. 1

Report supplied by USDA

Compared to last week: Slaughter Steers and Heifers closed 2.00 to 3.00 lower. Cows finished 1.00 lower. Bulls steady to 1.00 lower. Buyers remain selective in regards to grade and weight as an increase number of steers under 1100 lbs. and Heifers under 925 lbs. grading good to low choice are noted on the market. Lower cme prices, boxed beef and carcass beef quotations all contributed to the downward price pressure. Receipts this week 3200. Compared to 2653 last week and 2904 one year ago.

**SLAUGHTER STEERS:** Choice 2-4 1050-1250 lbs. 57.00-60.00, mostly 57.00-58.00 late. Package and load 1180-1200 lbs. 61.00-61.50 Monday. 1000-1100 lbs. 56.00-59.00, late 56.00-57.00. Good and Choice 2-3 1050-1150 lbs. 55.00-59.00. Good 52.00-55.00. Holsteins: Good and choice 2-3 1125-1450 lbs. 51.00-51.50, load 1350 lbs. 53.50. Standard and Good 49.00-51.00.

**SLAUGHTER HEIFERS:** Choice 2-4 950-1050 lbs. 55.00-57.00, couple loads 57.50, few 950-975 lbs.

Monday at 58.00. 850-950 lbs. 52.00-56.00. Good and Choice 2-3 900-1050 lbs. 54.00-56.00. 850-900 lbs. 50.00-52.00. Good 50.00-54.00.

**SLAUGHTER COWS:** Utility 1-3 35.00-40.00, cutter 33.00-37.00. Canner and Low Cutter 30.50-33.00.

**BULLS:** YG 1-2 1100-2000 lbs. 44.00-50.00.

## Morrison Cove Livestock

Monday, Aug. 29

Report supplied by Auction

**CATTLE 272:** High Choice & Prime slaughter steers 61.50-62.75, Choice 58.50-60.75, Good 57.25-59.25, Standard 51.50-56.25, Utility 40.25-48.75. Choice slaughter heifers 60.25-61.50, Good 56.25-58.50, Standard 50.25-54.50, Utility 42.50-48.50. Utility & Commercial slaughter cows 40.50-43.75, Commercial 39.50-41.25, Cutters 38.50-40.25, Canner & Low Cutters 33.10-39.50, Shells down to 25.00. Choice slaughter bullocks 54.50-57.50, Good 52.50-54.00, Standard 44.50-48.50, utility 40.50-42.50. Yield Grade #1 slaughter bulls 51.50-54.50, #2 42.50-48.50. Choice feeder steers 48.50-52.50, Good 44.50-48.00, Medium 37.50-42.50. Good feeder heifers 42.50-50.25, Medium 37.00-40.50. Good feeder bulls 42.50-50.00, Medium 36.50-44.50.

**CALVES 407:** Prime vealers 82.50-91.50, Choice 72.50-80.50, Good 60.00-67.50, Standard & Good 110-130 lbs. 55.50-60.50, 90-110 lbs. 48.50-53.50, 70-90 lbs. 42.50-48.50, Utility at 35.00. Farm Calves: Holstein

Bulls 90-130 lbs. 67.50-88.50; Hol. Heifers 90-130 lbs. 55.50-65.50.

**HOGS 325:** US No. 1-2 200-240 lbs. barrows and gilts 49.00-51.50, No. 1-3 200-240 lbs. 48.00-49.25, No. 2-3 200-40 lbs. 47.00-48.25, 250-300 lbs. 42.50-46.00. US No. 1-3 300-600 lbs. sows 35.50-42.50, No. 2-3 300-600 lbs. 30.50-35.00. Boar 29.00-31.25, light weights 31.50-35.50.

**FEEDER PIGS 90:** US No. 1-3 20-40 lbs. feeder pigs 13.00-22.50 per head, No. 1-3 40-60 lbs. 22.50-28.50 per head.

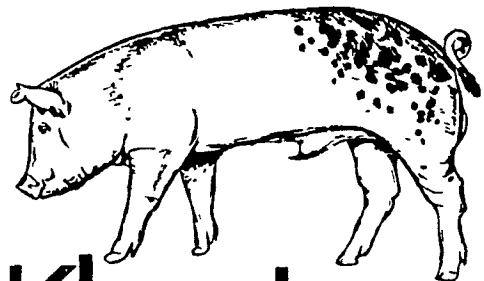
**SHEEP 19:** Good 90-100 lbs. spring slaughter lambs 42.50-49.50, Utility 60-75 lbs. 26.00-39.00. Slaughter ewes 8.00-22.00. **GOATS 12:** 12.00-28.50 per head.



## WET BREWER'S GRAINS

25% Dry Matter  
32% Crude Protein

215-351-9211



Purina Dealer

## KleenLeen Checker™ Boars

- All Boars Performance Tested For True Genetic Potential.
- 4 Purebred and 3 Crossbred Lines.
- Strict Health Control Program And Written Health Warranty
- Proven Breeding Programs.

SEE YOUR PURINA DEALER TODAY

**K & K FEED, INC.**

PHONE 717-866-2324  
23 N PARK ST. RICHLAND, PA 17087

*Anthony's Feed Mill*

PHONE 215-488-6211  
STRAUSTOWN, PA 19559

**WEST WILLOW FARMERS ASSN., INC.**

PHONE 717-464-3386  
WEST WILLOW, PA 17538

**WOODSTOWN ICE & COAL CO.**

PHONE: 609-769-0069  
WOODSTOWN, N J 08098

**HESS MILLS**

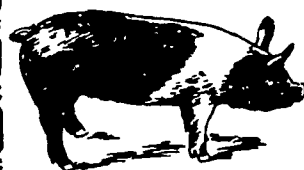
PHONE 717-442-4183  
717-768-3301  
PARADISE, PA 17562

**KEYSTONE MILLS**

John B. Kurtz  
PHONE 717-354-4616 717-738-1088  
RD3, EPHRATA, PA 17522

**LEHMANS FEED STORE**

PHONE 717-528-4151  
YORK SPRINGS, PA 17372



**EMERY'S BUYING STATION**

OPEN TO RECEIVE  
YOUR MARKET HOGS

AT THE GREEN DRAGON MARKET  
RD 4, EPHRATA, PA 17522  
1 MILE NORTH OF EPHRATA  
ON NORTH STATE STREET.

HOURS  
MONDAY, TUESDAY, and  
WEDNESDAY  
6:00 A.M. to 11:30 A.M.

215-458-5677 Residence  
717-733-9648 Office

YOU ARE PAID FOR YOUR  
HOGS IMMEDIATELY

Ken & Lois Emery, Proprietors



**ATTENTION YORK CO. FARMERS**

Looking!!! For Quality Hogs

Every Monday  
HATFIELD PACKING CO.  
BUYING STATION AT  
SECHRIST SALES CO.  
LIVESTOCK AUCTION  
R.D. 1 Stewartstown, PA

.. Top Select Price on #1 & 2 Hogs 215 - 245 lbs.

.. We will receive your hogs from 6 A.M. until ???

.. Your hogs will be weighed & paid for immediately

.. There will not be a commission or yardage fee

.. You may call our office Monday morning for base price

.. Please give us a chance to market your hogs

FOR INFORMATION CALL  
717-993-6130

## Porkland Industries, Inc.



Attention:  
**HOG PRODUCERS**

WHY GET LESS MONEY -  
SHIP YOUR HOGS  
DIRECT TO PACKER

- Your hogs will be weighed and paid for immediately at market prices.
- No commission or yardage deducted from check.
- Receiving hogs from 5 AM - 9 A.M.
- Call (717) 393-0416 for the price of hogs each day.

Ship Hogs To:

**E.W. MARTIN CO.**

Division of  
PORKLAND INDUSTRIES, INC.  
1625 Old Philadelphia Pk.  
Lancaster, PA 17602