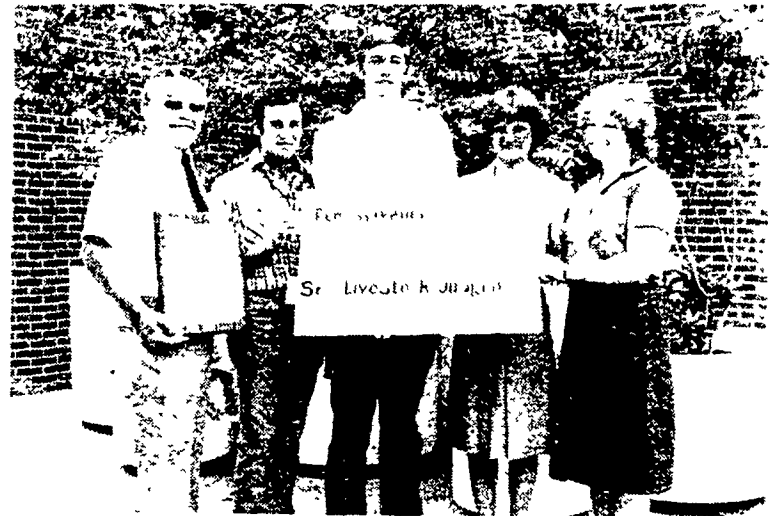


First Place Winners Abound in York



Four York County 4-H'ers won first place in the dairy bowl contest at 4-H Achievement Days at Penn State. From left are: Dr. Maurice Kramer, state 4-H program leader; Leslie King, Peggy Klinedinst, Patty Bupp and David Krone.



York 4-H'ers won first place in the senior livestock judging contest at 4-H Achievement Days. From left are: Tony Dobrosky, county agent; Robert Livingston, Bill Wise, Julie Myers and Chris Shive.

SURGE

INFARMATION FEED MANAGER



**COMPUTERIZED FEEDING
& MANAGEMENT SYSTEM**

Call Us...

Longacre

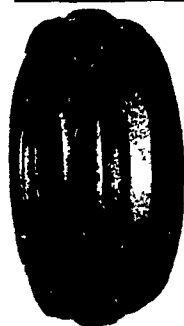
ELECTRICAL SERVICE, INC.

602 MAIN STREET BALLY, PA. 19503
DIAL (215) 845-2261

"Where The Handshake Is Mightier Than The Pen!"

LOADER TIRES

- We Ship UPS
- 700-15, 6 ply . . . \$65.00
- 750-15, 6 ply . . . \$68.00
- 10-16.5, 6 ply . . . \$80.00
- 12-16.5, 6 ply . . . \$115.00



FRONTS

WE SHIP
UPS

- 400-12 . . . \$22.00
- 400-15 . . . \$24.00
- 500-15 . . . \$31.00
- 550-16, 4 ply . . . \$33.00
- 550-16, 6 ply . . . \$36.00
- 600-16, 4 ply . . . \$37.00
- 600-16, 6 ply . . . \$41.00
- 650-16, 6 ply . . . \$42.00
- 75L-15, 6 ply . . . \$50.00
- 750-16, 6 ply . . . \$50.00
- 750-16, 8 ply . . . \$54.00
- 750-18, 6 ply . . . \$64.00
- 9.5L-15, 6 ply . . . \$55.00
- 9.5L-15, 8 ply . . . \$60.00
- 1000-16, 6 ply . . . \$80.00
- 11Lx15, 8 ply . . . \$75.00
- 1100-16, 8 ply . . . \$110.00
- 14L-16.1, 8 ply . . . \$160.00

RADIAL SPECIALS

- 18.4x34, 6 ply . . . \$420.00
- 18.4x38, 8 ply . . . \$495.00

* We Install Within 100
Miles Of Lancaster
& Harrisburg

We Stock
COMBINE
TIRES

Delivery & Installation Each Week In:
• Sunbury • Williamsport • Lewistown
• Center Hall • State College
• Reading • Allentown • Pottstown



TRACTOR TIRES

ARMSTRONG

WE GO THE EXTRA MILE

MUST SELL FOR CASH

- 9.5x24, 4 ply . . . \$82.00
- 11.2x24, 4 ply . . . \$95.00
- 11.2x28, 4 ply . . . \$113.00
- 11.2x38 . . . \$140.00
- 11.2x36 . . . \$135.00
- 12.4x24 . . . \$120.00
- 12.4x28, 4 ply . . . \$125.00
- 12.4x38 . . . \$165.00
- 13.6x28, 6 ply . . . \$155.00
- 13.6x38, 6 ply . . . \$191.15
- 13.9x36, 6 ply . . . \$185.00
- 14.9x26, 6 ply . . . \$170.00
- 14.9x28, 4 ply . . . \$158.00
- 14.9x38, 6 ply . . . \$224.00
- 15.5x38, 6 ply . . . \$220.72
- 16.9x34, 6 ply . . . \$250.00
- 16.9x38, 6 ply . . . \$275.00
- 18.4x38, 8 ply . . . \$364.12
- 20.8x38, 8 ply . . . \$495.00
- 20.8x34, 6 ply . . . \$450.00
- 18.4x34, 6 ply . . . \$289.00
- 18.4x34 8 ply . . . \$325.00
- 16.9x30, 6 ply . . . \$224.00
- 18.4x30, 6 ply . . . \$262.00
- 14.9x28, 6 ply . . . \$173.00
- 13.6x28, 4 ply . . . \$140.00
- 16.9x28, 6 ply . . . \$220.00
- 24.5x32, 10 ply . . . \$700.00
- 23.1x34, 8 ply . . . \$660.00

We Will Give You Good Trade For Used Tires

* Above tires are original equipment type, Federal Tax is included in above price.

IF YOUR SIZE IS NOT LISTED
CALL US FOR SPECIAL PRICE!

MUMMAU'S TIRE

Mt. Joy, Pa. 717-653-1260
PA. TOLL FREE — 1-800-222-1729