

SILOS & UNLOADERS

Harvestore silo, 20x60, disassembled, 717-532-9271.
19x61 Slurrystore for sale, 717-532-9271.
For Sale - 16x40 Concrete Stave w/metal roof, 717-548-2271.

SILOS & UNLOADERS

Wantad - 20' Jamesway Big Jim unloader. Berks Co. 215-683-9086.
For Sale - 1969 White top 25x65 Harvestore Silo plus Goliath unloader. Bruce Nichols, Ogenburg, NY 13669, 315-393-4508.

SILOS & UNLOADERS

Call us for all your silo need Detweiler Silos, RD 2, Box 267D, Newville, PA 17241. 717-776-6321 or 717-532-3039.

SILOS & UNLOADERS

Specializing in dismantling and re-erecting steel structures, Earl B. Zimmerman, RD 4, Box 93 Royer Road, Litz, PA 17543, 717-733-0408.

GRAIN EQUIPMENT

One used grain auger, 1 1/2 years old, 8"x65" excellent condition 717-653-8783
20 ton bulk bin fully assembled Call Diane 401-364-7712

Grain dryer MC 600, continuous, PTO, \$1750 Bucks Co. 215-343-2444.

6"x34" grain auger w/2 HP motor, \$375. Also 16' Harvest Handler belt elevator, \$250. 348 White spring reset plow 3x16", \$2200 Cumb. Co. 717-532-3360.

For Sale - 16" Papec silage cutter, in good cond., Elam Kauffman, RD 2, Box 125, Honeybrook, PA 19344.

For sale - Moridge dryer model 400, used 3 yrs. Speed King 8" x 36" auger. Superior 8" x 52" auger. Behlen 25 ton hopper bin, 1000 bu. round corn crib with oak floor 215-273-2548.

1976 Gleaner diesel combine, model M, 15' grain head w/Hart Carter floater and wobble box, exc. cond., field ready, \$18,500. 609-859-2381

BUILDINGS & SUPPLIES

BUILDINGS & SUPPLIES

For Sale - 500 Locust posts 7' to 8' long, \$1.50 to \$2.00 each, 717-687-8364 between 7:30 AM and 3 PM.

Large frame apartment building to be torn down for lumber. 717-846-2473.

For Sale - 1 double hung 4 window porch unit; 1 double hung 3 window porch unit; double hung, double window unit, not yet dismantled, 717-273-3095.

For Sale - Slate, various sizes, old wood siding, wooden floor, approx. 20 5 1/2' x 6' x 16' wooden pegged posts and some beams. 717-569-0737.

For Sale - 40x70 hand hewed log barn to be removed. Call 12:00 noon East Berlin 717-259-9800.

Good used blue styrofoam insulation sheets 16"x54"x3" thick, 24"x48"x2" thick, approx. 1/2 of new price. Also miscellaneous butcher equipment and supplies, used ammonia and Freon equipment, 717-667-2185

Barn 50x35' w/attached 11x30' wagon shed. 717-264-8370.

500x40' 1 story modern chicken house for sale, Manheim area, 215-874-5077

GRAIN EQUIPMENT

Used Mix Mill Equipment Completely reconditioned and guaranteed 2 model "D" mills, two 500 lb Nutn Blenders, augers, 40 ton feed factory Call for prices and details 717-637-2214

1- Radson model 200 grain moisture tester, 1-Dole model 300 grain moisture tester, 1-40"x6" Snowco PTO driven grain auger with extra tube, 215-666-5410 after 6PM
Farmhand grinder mixer, all hyd. driven, magnet, model 850, holds 3 tons of ground feed; AC cleaner combine, '75 model F, 13 grain head, 430 corn head, cab, ac, grain saver, hume reel, both real nice, 717-582-4660

GRAIN EQUIPMENT

NI model 300 2 row picker, working order \$600 Berks Co 215 756 6154.

Grain dryer MC250, \$2000 Call 215-679 7756 or 215-679-2748 after 6 PM

For Sale

Sturdiant Simptor, Bearcat hammermill 10x24, 60 HP, brand new, complete
Adams Industrial Machinery, Inc.
717-632-3443
Adams County

S & S SILO REPAIR WE DO

- * Most Any Kind of Stave Silo Work
- * Move Silos * Replastering
- * New & Used Extensions
- * New & Used Roofs & Chutes
- * Unloaders
- * Wooden Calf Hutches
- * Fiberglass Feed & Silage Carts
- * Install Silage Distributors & Fill Pipes
- * Repair Level Flo Silage Distributors

SHOTCRETE RELINING Stronger Than Plaster Seal & Strengthen Your Silo With Shot Crete 5 Year Unlimited Guarantee on this reliner

All Silo Work Done From The End Of October Until The End of June Will Be Done At A Reduced Cost. We Cover A Wide Area
Box 423 RD 1 Gap, PA 17527
717-768-3052

MARTIN'S SILO REPAIR

Moving Concrete Stave Silos Also

- New & Used Extensions
- Replastering
- Fill Pipes
- Distributors
- Roofs
- General Repair

Rt. 1 Box 315
Denver, PA 17517
215-484-2517

Starline model 70 20' unloader, \$1000. Supreme mixer box, 5 hp motor, electronic scales, \$1200. 301-778-0203

FOR SALE OR TAKE OVER LEASE

20x28' Harvestore with auger unloader
717-942-6466

MADISON SILOS OFFERS YOU...

- Automatic Roller Mills
 - Roof And Chute Replacement
 - Resurfacing Interior Walls
 - Sand Blasting
 - Gunite or Plaster Inside Finish
 - Extensions
 - Distributors And Fill Pipes
 - Used Silos
 - Starline Silo Unloaders
 - Laidig Unloader Parts & Service
- CALL US TODAY...**

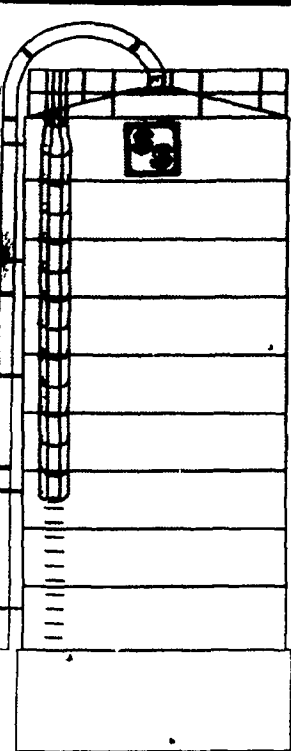


MADISON SILO CO. of PENNSYLVANIA

1070 Steinmetz Rd.
Ephrata, Pa. 17527

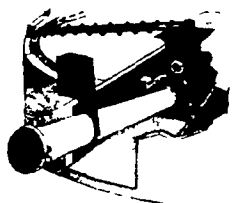
Phone
717-733-1206

IMPROVE YOUR BOTTOM LINE WITH A SOLLENBERGER BOTTOM UNLOADER



Sollenberger and Laidig - The two best names in bottom unloading silos team up to give you the best structure and unloader for your money.

- Solid 6" thick high strength concrete walls, over twice the thickness of some other concrete structures.
- 60,000 P.S.I. Steel reinforcing
- Over 75 years experience
- White color reflects 3 times better than blue...much less heat damage
- Leasing available



Laidig 98 and 198 for Forage
Laidig 43 and 143 for Grain

TOP UNLOADING STRUCTURES ALSO AVAILABLE



Sollenberger Silos Corp.

A Nitterhouse Company
Box N
Chambersburg, Pa. 17201 (717) 264-9588
A Producer of Quality Concrete Products Since 1923

CLEARANCE! MUST BE SOLD BY SEPT. 15 SAVE ON DISCOUNTED STEEL BUILDINGS!

- * BUY NOW!
 - * LAST CHANCE TO SAVE UP TO THOUSANDS OF DOLLARS!
 - * FIRST COME - FIRST SERVED! GET YOURS WHILE YOU CAN!
- Here's a few examples of the Deals available to you...

30'x40'x12' Trojan	\$4334
30'x40'x12' S. Wall	\$4499
30'x40'x16' S. Wall	\$6283
30'x48'x10' S. Wall	\$5605
50'x120'x16' S. Wall	\$21,197
40'x60'x14' S. Wall	\$7733
40'x100'x16' Trojan	\$17,880
50'x50'x16' S. Wall	\$10,824
60'x100'x16' S. Wall	\$18,657

ALL BUILDINGS HAVE SOME OPTIONS SOME ARE GALVANIZED, SOME COLOR - CALL COLLECT FOR COMPLETE DETAILS

301-452-5802 304-845-8243
Coale's Steel Building Sales
Box 2, Darlington, MD 21034

Prices F.O.B. Factories. LL/WL vary per area. Be sure your building purchase meets your needs All buildings engineer certified

STANDING TIMBER WANTED

Highest prices paid for good quality hardwood in tracts of 10 acres or more. Free Appraisals

KONDOR LUMBER CO., INC.

RD 11
York, PA
717-755-6841

GRAIN DRYING & STORAGE

Prompt Unloading We Buy And Sell

Combining and Hauling

ERWIN J. MILLER & SON
(717) 656-8593

Loc: 1/2 Mile North of Bird-In-Hand on Beechdale Rd.

SEE US FOR ALL YOUR GRAIN EQUIPMENT NEEDS

- Augers
- Bulk Bins
- Grain Bins
- All Types Of Feed Handling Equipment



410 E. LINCOLN AVE. MYERSTOWN PA 17067 PH 717-866-7565
BEST IN DESIGN PRICE AND EXPERIENCE

- * Grain Bins, 1800 bu. cap. As Low As \$1551
 - * Wet Bins up to 4900 bu. capacity
 - * M-C Continuous Flow Dryers PTO models or all electric models
 - * Super B Automatic Batch Dryers
 - * Sukup In-Bin Drying Systems
 - * Rolfes Fans: Vane Axel or Centrifugal for Aeration or Drying
 - * Rolfes temperature cables
 - * Augers, Cleaners, Accessories
- Direct factory distributors

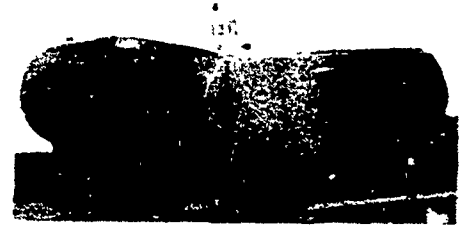
THOMAS BACHMAN & SONS

2501 Fallston Road
Fallston, MD
301-557-7529 301-836-6877

DAIRY EQUIPMENT

DAIRY EQUIPMENT

MUELLER USED 600 GAL. M



USED TANKS
900 Gal. OH Mueller
1000 Gal. Sunset
1000 ~~SOLD~~ keeper

USED COMPRESSORS
3 HP Lehgh

ENGINES

- 1 New 4 HP Tacumseh Gas
- SU-10 ~~SOLD~~ Clutch
- 1 Used 3 HP Briggs & Stratton
- 2 Used 5 HP Briggs & Stratton

QUEEN ROAD REFRIGERATION

Box 67, Intercourse, PA 17543
Phone: 717-768-9006 or
Answering Service - 717-354-4374

★ 24 HOUR SERVICE