

Goat winners picked

KUTZTOWN — Judge Richard Stonebeck, Oxford, nodded Debbie Price, R2 Douglassville, to most of the top placings in the 1983 Goat show at the Kutztown Fair. Debbie owns 17 goats along with her Guernseys and plans to become a veterinarian. Right after the fair

she will be leaving for Penn State to begin her studies.

Debbie and her goats were awarded Grand Champion Nubian, and Reserve, Grand Champion Alpine and Reserve, and Debbie was also picked as Grand Champion Fitter and Reserve

Champion Showman. "If I would rate her, I would give her a 99," the judge stated of Debbie. "All in all, a perfect fitting job", he concluded.

Grand Champion Showman went to James Heffner as the judge stated that he was very pleased with "the excellent showmanship I've been seeing today".

Goat Show placings as follows:

Fitting
Seniors - 1 Deb Price, Intermediates - 1 Mark Price, Juniors - 1 Joyce Heffner

Showing
Seniors - 1 Deb Price, Intermediates - 1 Mark Price, Juniors - 1 Joyce Heffner
Grand Champion Fitter - Deb Price; Reserve - Kent Fisher
Grand Champion Showman - James Heffner, Reserve - Deb Price

Breeds
LaMancha - Grand Champion, Heath Fisher
Nubian - Grand Champion, Debbie Price, Reserve, Debbie Price
Recorded Grades - Grand Champion, Lisa Lindstrom, Reserve, Howard Schneider



Debbie Price, R1 Oley, is shown with her Grand and Reserve Champion Nubians and her Grand and Reserve Champion Alpines of the Kutztown Fair.



Joyce Heffner, Fleetwood, with her junior champion, Recorded Grade, "Frisky."

WANTED: POULTRY FARMERS!

BUY DIRECT FROM THE MANUFACTURER

Replace Worn Out Dropping Boards With Our All New, Fully Extruded, Non-Corrosive, Flame Retardant, Compounded Plastic Dropping Board.

"We have the best board at the best price in the industry."

PARSON AGRI PRODUCT
A Division of Parson Industries Inc.
Box 133, Denver, PA 17517

215-267-2838

Boards & Curtains For All major Cage Systems

DISTRIBUTORS & DEALER INQUIRIES INVITED

LOW COST QUALITY BUILDINGS

- Horse Barns
- Farm Buildings
- Garages
- Commercial



NAME _____

ADDRESS _____

PHONE _____

Type of Bldg. _____

HANOVER POLE BUILDINGS
RD 1, Box 118 Hershey, PA 17033
717-367-1996
Serving Central PA and Northern Maryland

TOBACCO CUSTOM SPRAYING

Two high clearance tractor sprayers equipped especially for tobacco - 3 fan tips per row to insure maximum leaf area coverage.

We are ready for any spraying needs as they arise in Lancaster County's tobacco crop.

Call us for field inspections and line up your spraying needs.

- ALFALFA -

Leafhopper pressure is still with us. Spray after third cutting. Call for professional application service.

- CORN SILAGE -

Use anhydrous ammonia as a non-protein nitrogen source, product and equipment available.

FALL SEEDING REQUIREMENTS

RYE We are taking orders for cover crop rye	WHEAT Tyler wheat available	ALFALFA Cimmaron in stock
---	---------------------------------------	-------------------------------------



BULK BLENDS
MASTER FARMER
ANHYDROUS AMMONIA

ORGANIC PLANT FOOD CO.

2313 NORMAN ROAD, LANCASTER, PA

PHONE:
717-397-5152

SUMMER HOURS:
Weekdays 7:30 - 4:00
Closed Saturdays July and August

PROTECT YOUR VALUABLE HAY CROP!



with

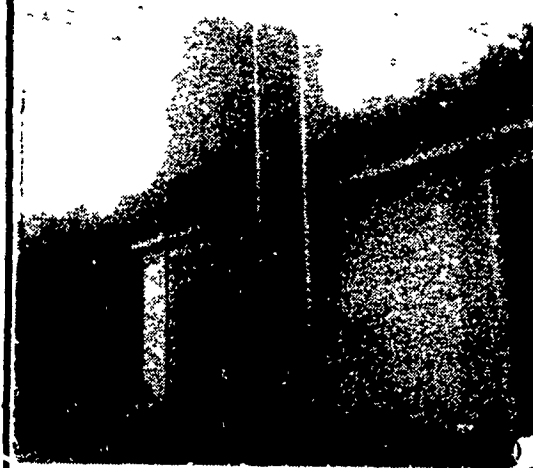
"AGRI HAY BALE BAGS"

- Heavy-duty 5 mil., lineal low density, white poly "Agri Bale Bags"
- 60" diameter x 150" long & 44" gusset.
- Oxygen-limited storage without the cost of a silo for your hay crop.
- Protect against the loss of nutrients from excessive leaf loss and uncertain weather by baling high moisture "haylage"

ZIMMERMAN'S ANIMAL HEALTH SUPPLY

RD 4, Box 141, Lititz, PA 17543
(717) 738-4241
3 miles west of Ephrata, south of Rt. 322, along Wood Corner Road.

CUSTOM MADE FEED BINS FOR FARMS — FEED MILLS



- Made of 13 gauge Steel
 - All welded seams
 - Gravity Flow or Auger
- Free Estimates

Also - Steel Roof Trusses for buildings - Portable Hog Buildings - Bucket Elevators - Grain Augers - Distributors - Flow Pipes & Accessories

We Sell, Service & Install
Ph: 215-944-7808

STOLTZFUS WELDING SHOP

Owner - Samuel P. Stoltzfus
RD 1011, Dryville Rd.
Fleetwood, PA 19522