

Gleam shines at Holstein Ag Progress Sale

BY TRISH WILLIAMS
CENTRE HALL — Many of Pennsylvania's Holstein breeders elected to drive to Centre County on Tuesday to attend this year's Ag Progress Day. But when Ag Progress Days closed at 5 p.m. those Holstein breeders didn't drive home, they headed due east on route 45 to Centre Hall, where they attended the Holstein Ag Progress Sale. The sale was held at the Grange Fair Grounds and was sponsored by the Mifflin County and Centre County Holstein Clubs, with assistance from the Penna. Holstein Association.

Auctioneers, Mark Glick of Belleville, and V. Art Kling of Landisburg, did the selling honors, as 46 of Central Pennsylvania's

finest Holsteins were led across the auction block.

Selections for the sale were made by Roger T. Green and Jay Howes of Warriors Mark. Green also served as sale chairman. Howes assisted the two auctioneers and buyers by reading the pedigrees.

Ebon-Blanc Tradition Gleam an eight-month-old heifer with papers pending, brought the highest bid, topping the sale at \$3700. The Gleam heifer was bred and consigned by Centre County young dairyman Thomas Hartle, Lonely Spot Farm, Bellfonte. Hartle shares his dairy cattle judging and selection expertise with Centre County 4-H'ers as a volunteer coach of the County's 4-H dairy

judging team.

Roger Green purchased the Gleam heifer for Amelio Curti, of Wakana, Calif. Gleam's dam, All That Glitters Glows, in her first lactation has made a 151 day record of 10,417 pounds of milk and 313 pounds of fat, she is projected to make a 305 day first lactation record of 17,871 milk and 567 fat.

Gleam's granddam was

classified VG as a three-year-old, she is projected at nearly 20,000 in her second lactation.

Gleam's third dam is rated EX-2E, with records over 23,000.

The second high seller was Bransdale Elevation Rosalie-ET, a yearling heifer, with three brothers in France, and a maternal brother, Brans. Redemption, in service at LABC.

Rosalie was consigned by Terry Branstetter, of Tyrone, she was purchased by Richard Whitlock of Em-Tran, Mt. Joy.

Rosalie's dam was rated VG 87 as a 5-year-old, and has records over 25,000 milk, 1100 fat as a 4-year-old.

Sale clerk Doug Hershey reported a sale average of \$1475 on 46 head sold.

Use honey syrups

LANCASTER — Want to add a different taste to your canned fruits? Use a honey syrup. Almost any kind of fruit that can be processed can be packed with honey syrups.

Apricots - Process normally, but prepare the syrup by mixing 1 1/2 quarts of water with 1 3/4 cups honey (for 10 pounds of apricots). Boil the honey and water until all of the honey is dissolved, then pour over the packed apricots. Process normally.

Cherries - For enough syrup for 5 1/2 pounds of cherries, mix 1 1/2 cups of honey with 4 cups of water and boil until the honey is dissolved. Process the cherries as you would normally.

Peaches - Make the syrup for raw packed peaches from 1 1/2 quarts of water and 1 3/4 cups of

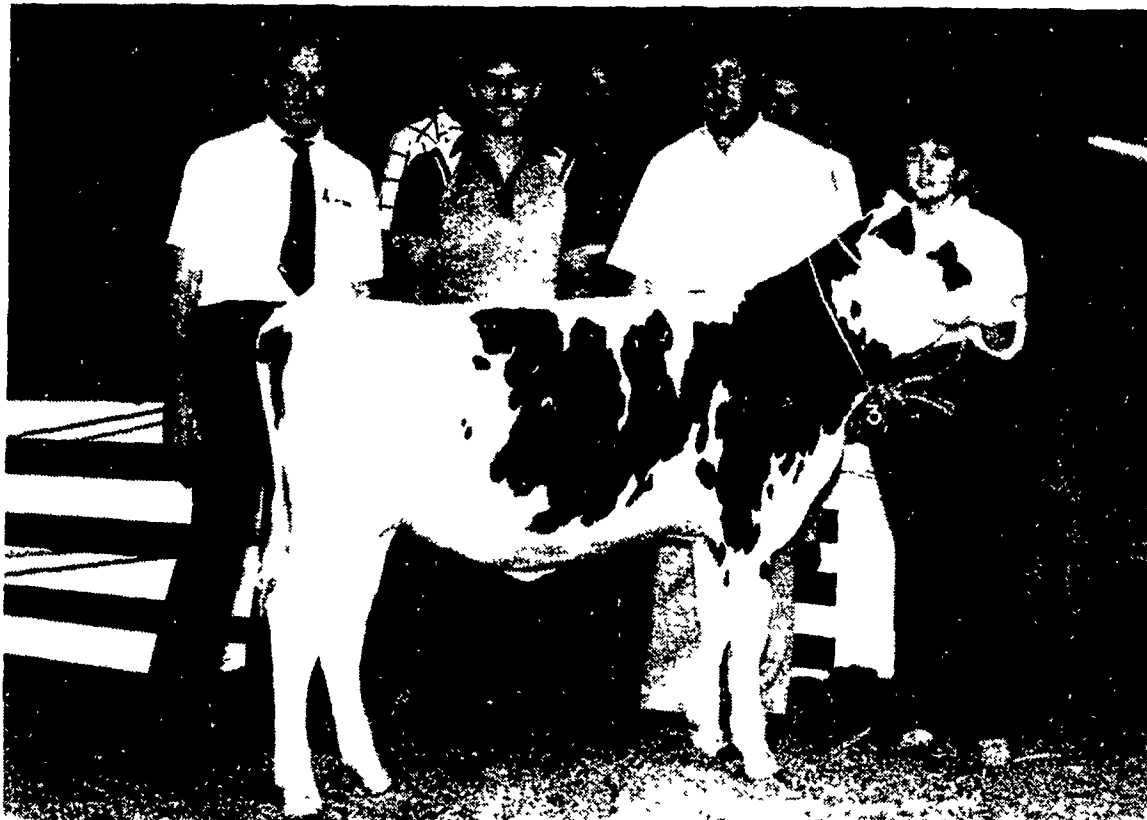
honey. Boil the syrup until honey is dissolved. Makes enough for 10 pounds of peaches. Process normally.

Pears - For enough syrup for 50 medium sized pears, boil 2 quarts of water and 3 cups of honey together until all of the honey is dissolved. Process normally.

Most fruits can be canned with the raw pack method using either thin, medium or heavy syrups. Honey syrups can be made for this purpose.

Thin syrup - Mix 1 1/2 cups of honey to 4 cups of water. Boil until honey is dissolved. Makes 5 cups of thin syrup.

Medium syrup - Mix 2 cups of honey with 4 cups of water. Boil until honey is dissolved. Makes 5 1/2 cups of medium syrup.



Top seller in the Holstein Ag Progress Sale, was Ebon-Blanc Tradition Gleam. William C. Nichol of PHA, on left, stands next to the consignor Thomas Hartle, and Roger T. Green, representing the buyer, Amelio Curti who is not pictured. On the lead is Barbara Green. In the background is Jay Howes, and auctioneers, Mark Glick and V. Art Green.

\$\$\$ PAYING CASH \$\$\$

Silver Dollars Paying \$13.50 EF,
 Sell At \$14.50
 Silver Coin Pay \$8.00-\$9.00,
 Sell \$10.00

Paying cash for all guns, gold rings, old clocks, old furniture, picture frames, watches, cars, trucks, farm tractors and equipment. Call or bring into:

GOLD & SILVER EXCHANGE
 Rt. 61 and Rt. 22
 Hamburg, PA next door
 to State Police Barricks
 215-562-5557

ALL PURPOSE CART



- * 2 Sizes In Stock
- * 8 Cu. Ft. Assembled w/Solid Front \$124.00
- * 15 Cu. Ft. Assembled w/Removable Front \$168.00

OR WILL MAKE THE SIZE YOU ORDER

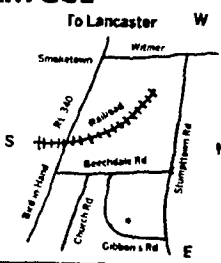
- Made of 1/2" Exterior Plywood
- Edges Protected w/Galvanized Sheet
- Finished w/Treated Redwood Stain

"GREAT FOR LAWN, GARDEN AND FARM USE"

Elam M. Ebersol

558 Gibbons Rd.
 Rd 1, Bird-in-Hand,
 PA 17505

1 1/2 Mile N. of
 Bird-in-Hand, PA



Unleash pasture's milk potential with

UNIPEL® Pellet Power!

If you want to find out how much milk production potential a pasture really has, try a fertility program of UNIPEL 20-10-10 pelleted fertilizer.

Its Pellet Power will get responses you'll like. Protein content and total digestible nutrients of grass and hay will start to increase dramatically. You'll produce more nutritious forage, graze more cattle and graze them longer. Pastures will bounce back faster after grazing and cutting, too.

Quick-acting and long-lasting forms of Nitrogen and Phosphorus chemically combine with available Potassium in each individual pellet for immediate and season-long feeding. They fortify pastures with milk-producing power... Spring, Summer and Fall.

Let's discuss soon how UNIPEL 20-10-10 fertilizer can help your pasture to more milk-producing profits.

ORTHO FERTILIZERS
 Helping the World Grow Better

Also Available Ortho Unipel 10-20-20 and 10-10-30

P. L. ROHRER & BRO., INC.

SMOKETOWN, PA

PH: 717-299-2571