

Lancaster Co. fair season opens at E-Town

ELIZABETHTOWN — The Lancaster County fair season opens this coming week with the Elizabethtown Fair, which will

feature the crowning of a Supreme Champion this year. The Elizabethtown Fair begins a six-day run on Monday, which is

devoted primarily to the receiving of entries. Competition gets underway on

Tuesday with the rabbit show at 10 a.m., the swine show at 4 p.m., the goat show at 7 p.m., followed by the bake show at 8 p.m.

The two main events on Wednesday are the sheep show at 11 a.m. and the beef show at 7 p.m.

Thursday's schedule includes the dairy show at 11 a.m., arts and crafts auction at 6 p.m., the crowning of the Supreme Champion at 7 p.m., followed immediately by the Sale of Champions. The Supreme Champion will be selected out of the champions of the dairy, beef, swine and sheep shows. A revolving cup trophy will be awarded.

On Friday, there's the Tractor Pull at 7 p.m. and the selection of Miss E-Town at 7:30 p.m.

The fair winds up next Saturday with the art and craft show, pet and animal parade and the arm wrestling contest.

The remaining Lancaster County fair schedule includes: Solanco Fair at Quarryville — Sept. 14-16.

Ephrata Fair — Sept. 20-24. West Lampeter Fair at Lampeter — Sept. 28-30.

New Holland Farmers Fair — Sept. 28 - Oct. 1. Manheim Fair — Oct. 3-7.

Hay Creek festival features engines

JOANNA FURNACE — One of the largest exhibits of turn-of-the-century stationary gasoline engines will be on display at the annual Hay Creek Valley Fall Festival at historic Joanna Furnace in Berks County Sept. 9-11.

The Fall Festival opens at 10 a.m. Friday, Sept. 9, and features a hoedown that evening. The site is located along Rt. 10 three and one-

half miles north of the Pa. Turnpike Morgantown interchange.

The Hay Creek Valley Fall Festival is a 25-acre celebration where the sights, sounds, and smells of yesteryear come alive. The festival returns visitors to a time when people were friendlier and everything was homemade.

Visitors can enter the iron-making community of Joanna

Furnace and examine the remains of the furnace stack, the blower/engine house, the office/store and various other structures. See how charcoal and pine tar pitch were made at Joanna Furnace, which is located in both the Pennsylvania and Nation Registers of historic sites.

Examine what is likely to be one of the largest technological history exhibits in Southeastern Pennsylvania. See huge traction engines, many over-50-year-old gasoline powered tractors and more than 100 turn-of-the-century stationary gasoline engines, all operating! Stroll through the Fall Festival and see the antique car display and numerous restored vehicles.

A blacksmith will handcraft

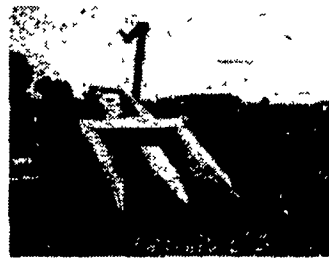
exquisite kitchen utensils. Talk to the broom maker, the basket maker, wheelwright, coopers and many more.

See a steam powered threshing machine, sawmill, and shingle mill all operating. Taste freshly stone ground corn meal and pressed cider. Enter the old Hay Creek Valley and step back into time where the smells of hickory fires and coal fired steam engines saturate the woods and mountains.

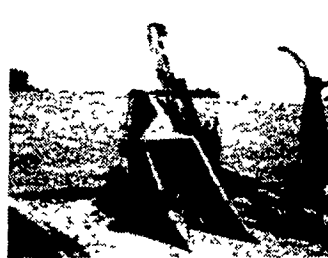
Visitors can start out both Saturday and Sunday with a sausage and pancake breakfast from 6:30-9 a.m. At noon and again at 5 p.m. steam whistles announce that it is time to eat. On Saturday from noon to 5 p.m. there's a chicken barbecue with all the trimmings.



Super Summer Sizzlers



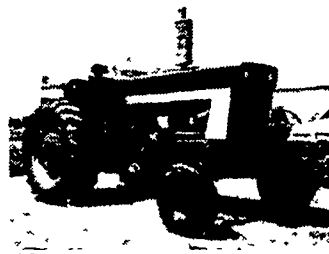
NI 325 2R Picker Sheller \$4,350



IH Corn Picker \$1,175



IH 105 Combine w/12' Grain Head \$2,750



IH 966, 2657 hrs., T.A., three point, real sharp \$12,700



(2) JD 4400 Diesel Combines, rotary screen (1) with 13' rigid P.U.R. (1) with 213 Flex 443 and 444 Corn Head. This is a pair of the sharpest 4400s we ever had. Priced Right!!



IH 1066 w/cab T.A., Air, Three Point \$13,950

DIESEL FUEL

PREMIUM BLEND

FUEL OIL

with Fuel Guard™
Summer Fill

Ask About Our

CASH PRICE

SAVE 25% ON BULK MOTOR OIL

CALL US FOR MORE INFORMATION

(717) 397-4954

AGWAY PETROLEUM
FUELS • SERVICE • EQUIPMENT

Box 1197



Dillerville, Rd.

LANCASTER, PA

USED EQUIPMENT

John Deere 350 Crawler Loader \$8,500
John Deere 34 Harvester w/ one row Cornhead & Pickup Attachment \$1,550
IH 5 Bottom Plow \$2,850
IH 8' Disk Harrow \$400
Oliver Drill \$375
John Bean Sprayer \$1,500
Dunham Loader \$1,950
JD 2840 w/1450 hrs., 18.4x34 rears, one of a kind \$13,400
JD 2640 w/146 loader, hi-lo shift, R&P axle, 2103 hrs., real clean \$14,700
JD 4230 sound guard body & quad range \$15,900
Steiger Cougar model 251 4 outlets, 813 hrs. \$49,850

IH 203 gas combine w/2 row C.H., 10' plat. and pickup reel \$3,950
MF #12 baler w/bale ejector and hyd. control, real sharp \$1,350
IH 46T baler w/bale ejector, nice, clean baler \$1,050
Case VAC w/eagle hitch \$475
JD 24T Baler, real sharp, no thrower \$950
Oliver 13x7 Drill, sharp \$950
JD 1209 mower conditioner
IH C Real Clean
IH 350 Gas Tricycle TA Fast Hitch
IH 340 Gas Tricycle Fast Hitch
IH Fast H^{OLD} Mower
New Holland 275 Baler w/Thrower
NH 479 Haybine
JD 3-14" F125 Plow
Grove Fg. Wagon w/roof
JD 640 Rake
JD 400 Grinds^{OL}ixer

THE ABOVE IS A PARTIAL LIST OF OUR USED EQUIPMENT
PLEASE GIVE US A CALL IF WHAT YOU ARE LOOKING FOR IS NOT ON THIS LIST.

EVERGREEN TRACTOR CO., INC.

30 Evergreen Rd., Lebanon, Pa. 17042 717-272-4641

STORE HOURS

Mon. Thru Fri. 7:30 AM-5 PM Sat. 8 AM to 12 Noon
WE SERVICE WHAT WE SELL WITH FACTORY TRAINED MECHANICS

