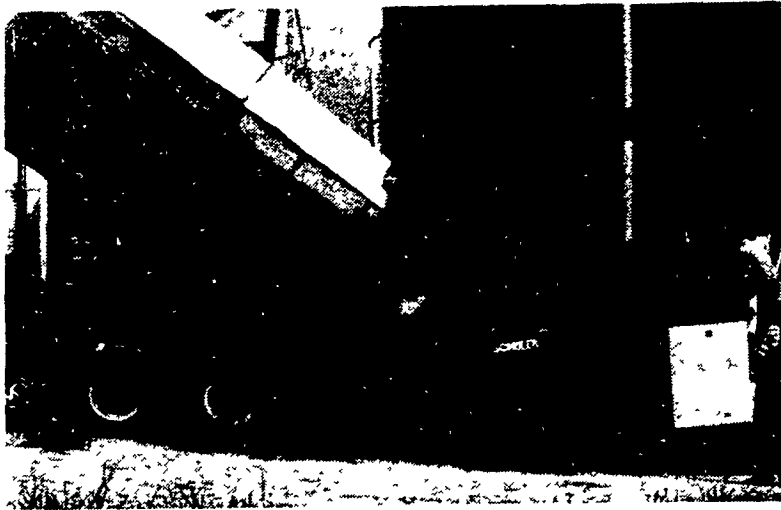


Stationary feeder



The new Model SF16 stationary feeder from Schuler Mfg. & Equip. Co., Griswold, Ia. is designed to feed silage or grain into the blower while the hauler is being used to transport more.

The all-hydraulic drive can be adjusted to handle what the blower can process. The floor apron can be run independent of cross conveyor and beaters. The same tractor can be used to power the blower or grinder and the Stationary Feeder.

Pa. Pork Producers act on market glut

KUTZTOWN — Supplies of pork are increasing with an abundance of pork coming to market this fall, according to the Pennsylvania Pork Producers Council. At a recent meeting, the Council adopted several resolutions to deal with the over supply, including the National Pork Producer's Council (NPPC) "PORK 4 PROGRAM", designed to manage two market factors — supply and demand.

"Needless to say, the supply is with us," according to Abe Fisher, PPPC Director, and Lancaster County hog producer. "Predictions of an 11 percent increase in hog marketings the last two quarters will add a pile of pork to the already burdensome supply. "However", Fisher explained, "pork producers can help themselves by maintaining or reducing breeding herd numbers, which will help the long-term supply situation." Fisher explained that "more immediate results will be seen by marketing hogs at lighter weights.

A reduction of the average weight of every hog in the United States by 10 pounds reduces the

total pork supply by 15 million pounds per week. It also improves production efficiency and increases lean yield percentage. "Thus, that total mountain of pork can be reduced NOW by reducing marketing weights and later by reducing breeding herd numbers," Fisher said.

The demand side of pork is just as manageable if funds are available to create demand and move more pork, according to the NPPC. Traditionally October is the busiest month for producer-funded pork promotions. This year is no exception, with television, radio and newspaper advertising being used heavily to emphasize the tremendous nutritional and economic value of pork.

Through producer participation in Pork Check-Offs, nine million new pork users have been found since 1980. Those new users will be around this fall to consume the pork available. Demand can be created through promotion by NPPC and PPPC, but it has to be funded by individual pork producers. "Make sure to support

the check-off", Fisher said. "It is your best hope for a positive influence on the marketplace that provides your livelihood."

For more information concerning pork marketing and promotion, contact the PA Pork Producers Council, R.D. #2, Box 219, Kutztown, PA 19530, or the PA Meat Marketing Program (PMMP), Bureau of Markets, PA Department of Agriculture, 2301 North Cameron Street, Harrisburg, PA 17110. The PMMP is a cooperative program among livestock and agricultural organizations and the PA Department of Agriculture.



PUBLIC SALE OF PERSONAL PROPERTY

To be held at McLaughlins Auction House, 440 Ramsey Avenue, Chambersburg, Pa. on

FRIDAY EVE., AUG. 26, 1983 7 P.M.
SATURDAY, AUG. 27, 1983 9 A.M.

FURNITURE

Oak bed; 2 oak screens; oak chest of drawers with mirror; cab rockers; oak stand; oak washstands; oak table; dropleaf table; wicker rocker; solid end soft wood cottage dresser; Empire round stand; 1 drawer nite stand; Duncan Phyfe extension table; 6 mahogany dining room chairs; buffet; oak Singer sewing machine; solid end jelly cupboard; good porch settee; bucket bench; child's piano; doll cradle; spool stand; cane seat chairs; Empire chest of drawers; cane seat rockers; ferneries; stools; camel trunks; small pine blanket chest; cedar blanket chest 36" high, 54" long & 24" wide; 2 swivel rockers; walnut stand; bed; gas stove; benches; Maytag wringer washer; lawn & lounge chairs; maple bed; nite stand; plank bottom chair; studio couches; soft wood stand; wall hugger; breakfast set; etc.

CHINA, GLASS, CROCKERY

21 pink glasses; pink pitcher; 8 pink serving dishes; Fostoria glass; cut glass; vasolene; China serving dishes; blue willow ware; pigeon blood red dishes; Compotes; Coke stands; berry sets; hand painted Nipon; cruettes; opalescent dishes; good ironstone; basket joint set of dishes; occupied Japan. Rebecca at The Well tea pot; early decorated red ware bowl damaged; Carnival glass; Copper Luster; 6 Lamoges cups & saucers; goblets; salt & peppers; nice 4 piece dinner service; gold banded stem ware; blue cake set; nice 95 piece set of China dishes; washbowl & pitcher; buffet lights; Easter eggs; glass toys; cabinet jars; Pyrex plates; marbles; 12 gallon crocks; crocks; jugs; jars; milk glass; Centennial bottles.

MISCELLANEOUS

Oak 8 day kitchen clock; old radio; Coo-Coo clock; collection of good brand toys; collection of banks; tin toys; collection of modern dolls; Celloid animals; old monkey doll; large collection of John Deere toys; metal clock; train; Lux alarm clock; 2 sets of silverware; large brass school bell; brass bowl; collection bubble bath bottles; what-nots; what not racks; brass church hanging lamp; coffee grinder; smoothing irons; fire place set; table, floor, pole, dresser and china lights; bird cages; wood clothes dryer & rack; hamper; washrubber; fruit dryer; barrels; 2 electric window fans; storage boxes; 2-quilting frames; cookie cutters; corn huskers; corn chopper; tin pieces; Christmas decorations; revolver; 22 rifle; crimping iron; large mirrors and pictures; binoculars; camera; child's knife & fork; old print set; pots; pans; kitchen utensils; skillet; sugar buckets; basket; sewing cabinet; old Monarch Pioneer typewriter; bicycle; tubs; Sterling candle sticks; stereo; 10'-6" x 15 rug; dollies; rag carpet; lot new and used flatted rugs; rug rags; 2 Adderdown comforts; comforts & quilts such as Log Cabin, Star, Basket, Lone Star and others; bed spreads; counterpanes; pillow throws; old clothes; 2 long linen table clothes; mattress and springs; shoe stand & lasts; 3 good pocket watches.

TOOLS, OUTSIDE ITEMS

2 work benches; table saw; buffer; lathe; drill press holder; emory on stand; good electric drills; extension cords; skill saw; jig saw; breast drill; many hand tools; 4 vices; planes; furniture clamps; nails screws; sledge; electric trimmers; lathe tools; socket set; saws; garden tools; meat bench; scales; lawn edger; meat saws; garden hose; 1 wheel garden tractor and equipment; garden plow; lawn spreader; 2 Lawn Boy rotary mowers; snow blower; duster; wheelbarrow; boxes; step ladder; jacks; pitcher pump; ice hook; digging iron; block & tackle; 1/2 mower; traps; coal buckets; push mowers; trellises; etc.

AUCTIONEER NOTE: Folks on this sale we have about everything. Wertz are moving from the area. I would say the offering is in excellent condition.

TERMS CASH.

HARVEY & HANNAH WERTZ

Auctioneer — J. Robert Meyers

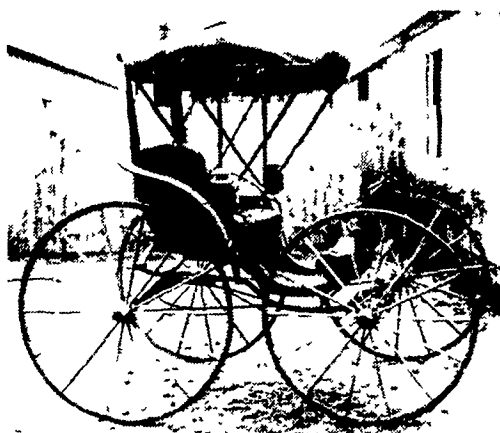
MARTINS SUMMER AUCTION

of CARRIAGES, SLEIGHS & ANTIQUES

August 25, 26 & 27, 1983

Starting 9:30 AM Each Day

Located at: Martins Sales Pavilion Two miles East of Intercourse, Lancaster County (Corner of Route 340 & New Holland Road), Pennsylvania.



Approx. 300 horse drawn vehicles in restored, new or original condition, pony & Horse size, will be sold during the three days. They include: Hay & farm wagons; express wagons; Landaulette; road coach; sev. spider phaetons; slat side phaeton & other styles of phaetons; doctor's buggies; Brewster brougham; runabouts & democats; meadowbrook cart; breaking carts; Stanhope gig; coupe rockaway; omnibus; chuck wagon; C-spring barouche; C-spring chaise; pony sailor wagon by Studebaker; traps; Geo. IV phaeton by Brewster & Co.; roof seat break; other commercial vehicles; 2 & 4 pass. sleighs (some on bobs); 4 & 6 pass. surreys; ammunitions caisson; to name a few. Misc. horse related equipt. & items include: 8-horse hot walker w/variable speed drive motor; natural wood dog tread power w/pulley brake, in good orig. cond.; life size fiberglass horses; coaching books & periodicals; carriage lambs; foot warmers; asst. of bits, rosettes & harness parts; sgl. & dbl. sets of new & used harness; 4-in-hand russet pony harness; saddles & bridles; numerous carriage & wagon parts; tie weights; poles & shafts; prim. & blacksmith tools; feed & water troughs; running gears; horse drawn farm machinery; baby carriages (some wicker); miniature wagons & sleighs; hand drawn baker's cart; hand drawn peanut wagon & many other items. of interest for the collector.

One session on Thurs. (Aug. 25) starting at 10 AM will include many misc. antiques & antique furniture of good quality. Colonial style dining room suite; general store items; ice boxes; washstands; hall racks asst. of rockers & chairs; walnut blind china closet; oak library table; old high chair; tilt top table (mahogany); sideboard with beveled mirror; some china & glassware; primitives; display cases & many more items. Consignments for this session will be accepted until the start of the auction.

4,000 to 5,000 lots have been accepted for this auction of interest to collectors; restorators & builders; antique dealers; interior decorators; farmers; coaching & driving enthusiasts & the equestrian. Plan to attend the three days starting at 9:30 AM, each day until late in the night. Good food is available on the auction grounds. Reserve seats are available by contacting the office.

TERMS: CASH, CERTIFIED CHECKS OR TRAVELERS CHECKS IN U.S. CURRENCY ONLY.



Martin Auctioneers, Inc.

Larry L. and Paul Z. Martin, Jr.
P.O. BOX 477 — INTERCOURSE, PENNSYLVANIA 17534
717/768-8108