

It's 3 days of turning picture perfect furrows

Hess, Burkhart, Miller win state plowing honors

BY JOYCE BUPP
Staff Correspondent

BAIR — While clouds of dust marked the movement of men and machines competing in the York County plowing contest Aug. 11, an overnight downpour softened the soils for state competitors who sank their moldboards into the ground the following day. Contestants competed in small, large and contour plowing divisions at the state & local level.

The plowing competition was part of a three-day extravaganza, from August 11-13 hosted at the John Shearer farm and adjacent York County 4-H Center, by area plowing organizations, the Chamber of Commerce, extension and agribusinesses. Final day of the three-day event saw entrants from six states compete for national plowing titles.

A mini-fair atmosphere filled the Center and surrounding wooded area, with equipment, seed and related ag-businesses setting up displays for the duration of the plowoffs. Several hundred turned out each day for the contests, which also featured demonstrations of various pieces of tillage equipment brought in by dealers for display.

Charles Hess, who chaired the three-day local, state, and national championships, emerged from weeks of monitoring meeting details with his plowing skills still intact, taking both county and state honors in the small plow division.

Hess, a Dallastown R1 dairyman, has won numerous prior awards in the past several years as a plowing promoter.

Joining Hess in the state contest winners circle after the Friday

competition were Frank Burkhart large plow division and Robert Miller, winner in the contour category.

Burkhart, president of the state plowing organization, resides at

Silver Spring in Lancaster County. Potato grower, Burkhart has won numerous awards since his first entry in the plowing contest in 1968, and has also competed four times at the national level.

Robert Miller, Millersburg R1, who won the contour division, is also a veteran among contest plowmen. The Dauphin County Guernsey dairyman made his initial venture into the contests in the early 1960's and won his first state competition in 1967. In 1976, when Pennsylvania hosted the national plowing championships at Rock Springs, Miller plowed his way to national honors.

Hess and Burkhart are now eligible to compete in the 1984 national contest, which is expected to be held in the midwest. There is no

contour division at the national level.

Winners in the state contest's small plow division are, Charles Hess, York County, first; Jay Stoner, Cumberland County, second; Neil Leffler, Dauphin County, third; and Bradley Kine, Somerset County, fourth.

In the state contour category, William Crain, Cumberland County, placed second to winner Bob Miller of Dauphin County, with York entry Terry Sunday placing third.

Placing behind Frank Burkhart, Lancaster County, in the large plow division were Gary Crain, Cumberland County, second; Frank Kocivar, Dauphin County,

(Turn to Page A38)



Trio of state plowing winners include, clockwise from top, Frank Burkhart, large plow; Charles Hess, small plow; and Bob Miller, contour.

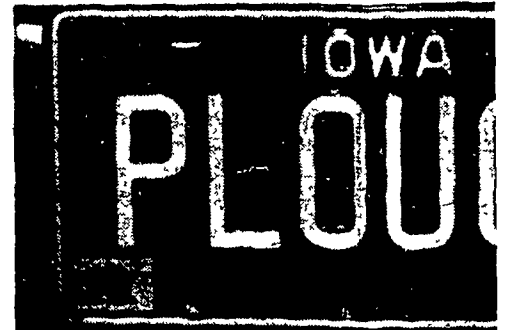
BY JOYCE BUPP
Staff Correspondent

BAIR — Plowmen from six states throttled up and sank sharpened plow points deep into the soils of the John Shearer farm last Saturday, as the national plowing championships wrapped up a three-day tribute to moldboard tillage techniques.

The "plowing Olympics" featured 27 contestants taking part in large, small and antique plow categories, with entrants traveling from Iowa, Illinois, Minnesota, South Dakota and Ohio to join participating host Pennsylvanians in the national judging.

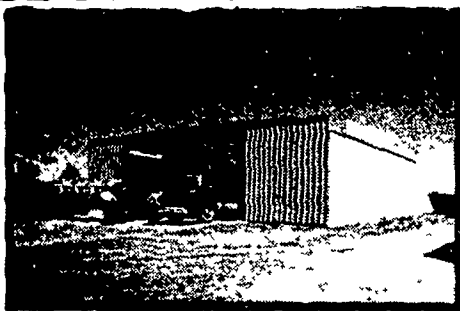
Pa. plowmen among n

When the lengthy judging periods finally ended and the winners called up to receive their awards, Pennsylvania Robert

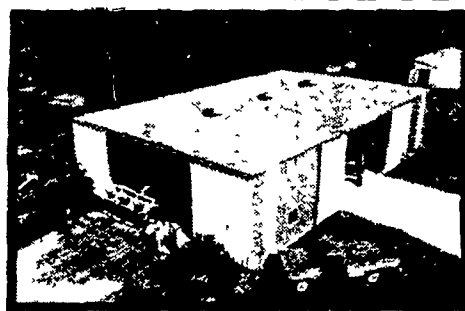


Formatted Buildings by Butler

See Our Display
AG PROGRESS DAY



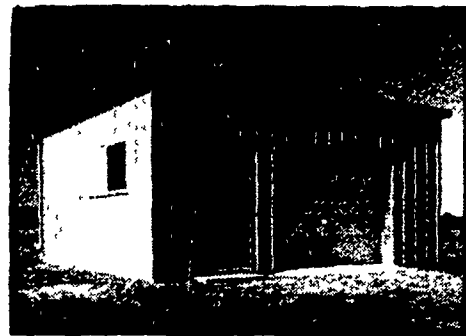
FARMSTEAD® I



FARMSTEAD® II



AG MASTER® 2:12



FARMSTEAD® II GARAGE

Talk with **BUTLER** -
The #1 Building Company
1st in Sales
1st in Quality

BUILDINGS ENGINEERED FOR FARMER ERECTION

BUTLER MFG. CO.

Attn. P.E. Hess
Box 337, Oxford, PA 19363

Dealer Inquiries Available in Pennsylvania Counties - Berks, Schuylkill, Armstrong, Indiana, Erie, Crawford, Warren, Elk, Cameron, McKean, Clinton, Lycoming, Sullivan, Wyoming, Luzerne, Columbia, Butler, Mercer, Lawrence, Beaver, Bradford, Susquehanna, Adams, Cumberland, York, New Jersey Counties - Sussex, Morris, Passaic, Atlantic, Cape May, Monmouth, Middlesex, Somerset, Warren, Hunterdon, Maryland Counties - Kent, Queen Annes, Talbot, Dorchester, New York Counties - Orleans, Genesee, Monroe, Livingston, Allegany, Steuben, Yates, Seneca, Cayuga, Tompkins, Schuyler, Tioga, Chemung, Broome, Chenango, Madison, Onondaga, Oswego, Jefferson, Lewis, Oneida, Herkimer, Fulton, Montgomery, Otsego, Delaware, Schoharie, Sullivan, Orange, Ulster, Greene.

No Dealer Fees.

Name _____

Address _____

County _____ Zip _____

City _____ State _____

Phone _____

(Include area code)

LF

BUY OR LEASE

Bethlehem 20 YEAR WARRANTY

More good news when specified as roofing or siding. Galvalume is warranted, under exposure to normal atmospheric conditions, for a period of twenty years against rupture, perforation, or structural failure.

KNOXVILLE CONSTRUCTION
Knoxville, Pa. 16928
PH: 814-326-4188

LEROY E. MYERS, INC.
Route #1, Box 163
Clear Spring, Md. 21722
PH: 301-582-1552

D. E. SMITH, INC.
Millintown, Pa. 17059
PH: 717-436-2151

GOMPFF CONSTRUCTION CO. INC.
1841 Jerry's Road
Street, Md. 21154
PH: 301-692-5350

FOUR COUNTIES CONTRACTOR
R.D., Box 249
Coalport, Pa. 16627
PH: 814-672-5751

C & M SALES INC.
R.D.#1
Honesdale, Pa. 18431
PH: 717-253-1612

NAZARETH BUILDING SYSTEMS, INC.
P.O. Box 47
Nazareth, Pa. 18064
PH: 215-759-1331

W.R. MOODY, CONTRACTOR
113 Walnut Lane
West Newton, PA 15089
PH: 412-872-6804

O. A. NEWTON & SON CO.
Bridgeville, Delaware 19933
PH: 302-337-8211

TRI-STATE MARINE DIST. INC.
Route 256
Deale, Md. 20727
PH: 301-867-1447

STOP

SEE WHAT

\$2800

or

\$6000

WILL BUY YOU

AG PROGRESS