

# Livestock market and auction news

## St. Louis Cattle

Thursday, August 18

Report supplied by USDA

Receipts This Week 4,500  
 Week Ago 4,100  
 Year Ago 3,900

Compared to the previous week, Slaughter Steers mostly 1.00 higher. Slaughter Heifers mostly .50 higher. Cows fully 3.00 lower. Bulls unevenly 1.00-3.00 lower. Slaughter supply mainly Choice Slaughter Steers, around 30% Heifers and 10% Cows.

**SLAUGHTER STEERS:** Mixed Choice and Prime 2-4 1050-1250 lbs. 62.00-62.50, part load 62.75. Choice 2-4 975-1275 lbs. 61.00-62.00. Mixed Good and Choice 2-4 900-1200 lbs. 59.00-61.00. Good 2-3 900-1175 lbs. 57.00-59.00. Mostly Good 2-3 1050-1350 lb. Holsteins 50.00-54.50, load 55.50. Couple lots Mixed Good and Choice 2-3 1150-1300 lbs. 57.75 and 58.00. Standard to Good 2-3 950-1350 lbs. 45.00-48.50.

**SLAUGHTER HEIFERS:** Mixed Choice and Prime 2-3 900-1100 lbs. 59.50-60.00, load 60.50. Choice 2-4 850-1050 lbs. 58.00-59.50. Mixed Good and Choice 2-3 850-1050 lbs. 56.00-58.50. Good 2-3 750-950 lbs. 53.00-56.00.

**COWS:** (Closing week sales) Utility and Commercial 2-4 34.00-36.00. Boning Utility 1-2 36.00-38.00. High-yielding Utility 1-2 38.00. Cutter 1-2 33.00-35.00. Canner and

low Cutter 1-2 30.00-33.00. Few shelly canner 25.00-30.00.

**BULLS:** YG 1-2 1050-2000 lbs. 45.00-52.00, closing 45.00-49.75, mostly 45.00-49.00.

**FEEDERS:** (Included around 1,200 at the regular Thursday auction). Feeder steers and heifers 1.00-3.00 lower. Supply mainly medium frame 1 and mixed 1-2 450-800 lb. steers and 450-700 lb. heifers. Moderate buyer attendance.

**FEEDER STEERS:** Medium Frame 1: 425-500 lbs. 58.00-60.25; 500-600 lbs. 56.00-58.50; 600-750 lbs. 55.00-58.50; few lots fleshy 850-925 lbs. 54.75-55.75.

Medium Frame 1-2 and some small frame 1: 475-575 lbs. 52.25-55.00; 650-900 lbs. 50.00-55.00.

Large Frame 2 Holsteins: Lot 380 lbs. 46.00; several lots 400-925 lbs. 39.00-43.50.

**FEEDER HEIFERS:** Medium

Frame 1: 450-750 lbs. 47.00-51.00. Medium Frame 1-2 and few small frame 1: 450-750 lbs. 42.50-46.50.

## Oklahoma Cattle

Wednesday, August 17

Report Supplied by USDA

Same Day Last Week: 13,215

Trade moderately active. Demand good. Feeder steers under 500 lb. steady to weak in limited test, over 500 lb. weak to 1.00 lower. Feeder heifers limited sales about steady. Bulk of receipts medium Frame 1 and Mixed 1-2 550-900 lb. feeder steers and 600-700 lb. feeder heifers. Good buyer attendance.

**FEEDER STEERS:** MEDIUM FEW LARGE FRAME 1: Couple lots 355-365 lb. 70.00-70.50; 400-500 lb. 63.75-65.50; 500-600 lb. 59.50-62.50; 600-700 lb. 57.80-61.80; 700-800 lb. 57.50-60.50; 800-910 lb. 56.40-59.20.

**MEDIUM AND LARGE**

FRAME MIXED 1-2. One lot 450 lb. 61.80; 500-600 lb. 57.55-59.40; 600-800 lb. 56.25-58.00; one lot 675 lb. thin and gaunt 60.90.

**FEEDER HEIFERS:** MEDIUM FEW LARGE FRAME 1: 425-475 lb. 53.50-54.80; 500-800 lb. 51.00-53.40.

Medium and Large Frame Mixed 1-2 385-500 lb. 51.80-52.00; 500-800 lb. 47.00-50.90.

Compared to last Wednesday, feeder steers and heifers under 500 lb. firm to 2.00 higher early in the week but hardly tested in mid-week trade. Feeder steers over 500 lb. 2.00-3.00 lower. Feeder heifers over 500 lb. mostly 2.00 lower. Slaughter cows were 1.00-2.00 lower with utility and commercial 2-3 37.30-38.90; cutters 1-2 34.75-37.60; canners and low cutters 30.80-34.90. Slaughter bulls also closed 1.00-2.00 lower in limited test with YG 1 1350-1450 lb. 45.00-47.50; 1550-2150 lb. 48.00-54.00. This week's salable receipts estimated at 21,500 head compared with 21,478 head last week and 25,272 head last year. The bulk of the

receipts consisted of feeder steers and heifers; cows and bulls made up about 7 percent of salable supply.

## Belknap Livestock

Dayton, Pa.

Wednesday, August 17

Report Supplied by Auction

**CATTLE** 55. Compared with last Wednesday's market; Choice steers (one) at 60.00, one Standard at 49.00. One Prime 1560 lbs. slaughter heifer at 57.25, one Standard at 45.00. Few Utility & Commercial slaughter cows 39.50-42.75, one at 46.00, few Cutters 38.00-40.25, Canner & Low Cutter 30.00-37.25. One Standard slaughter bullock at 49.00. One Yield Grade #1 1560 lbs. at 48.75. Medium Frame #2 390-610 lbs. feeder bulls 41.00-45.00.

**CALVES** 75. One Choice vealer at 79.00, few Good 63.00-67.00, Standard & Good 90-110 lbs. 44.00-54.00, 65-85 lbs. 36.00-47.00, Utility 35-110 lbs. 21.00-35.00. Farm calves, holstein bulls 90-125 lbs. 54.00-80.00; beef cross bulls & heifers 50-90 lbs. 50.00-67.50.

**wic**

- Bedding Choppers
- Silage Carts
- Manure Tanks

**HOUSE**

- Liquid Manure Pumps
- ELECTROMIX
- Barn Cleaner Chains

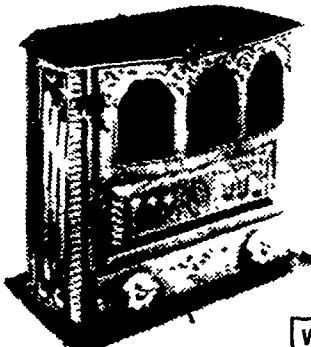
**US AGRI-SYSTEMS**  
 (301) 398-2948

Available From:  
**LUCAS BARN EQUIP.**  
 Bellefonte, Pa.  
 814-383-2806

**NEW LOCATION**  
 2533 Old Phila. Pk., Rt. 340  
 Smoketown, Pa. 17576

**DUSSINGER'S QUALITY STOVES**

**NEW HOURS:** Tues., Thurs., Fri. 10 A.M.-8 P.M.; Wed. & Sat. 10 A.M.-5 P.M.; Mon. By App't.



"Expert Guidance, Installation & Service"  
**Crane Stoves.**

Nobody In This Whole Country Makes A Better Coal Stove Than Crane!

Crane - Liberty Bell - Comforter - Coalbrookdale  
 (717) 397-7539

**WE FEATURE MANY MODELS OF STOVES AND INSERTS.**

SPECIALLY TREATED UNDERSIDE LASTS THE LIFE OF CREEPER



OPERATES BEST ON STONES ROUGH CONCRETE ASPHALT SNOW ICE STEEL PLATES

• GUARANTEED 1 FULL YEAR •  
 SOLD ON A 15 DAY MONEY BACK GUARANTEE  
 REGULAR PRICE \$34.00 PROMOTION PRICE \$29.95  
 ALLOW 15 DAYS DELIVERY TAX & SHIPPING INCLUDED  
 SEND CHECK OR MONEY ORDER TO  
 HAMPTON SALES' LF  
 R 1 BOX 252A PINE GROVE PA 17963

DOCUMENTED & RELIABLE—Est. 1974

**DIRECT**

**CASH REBATE**

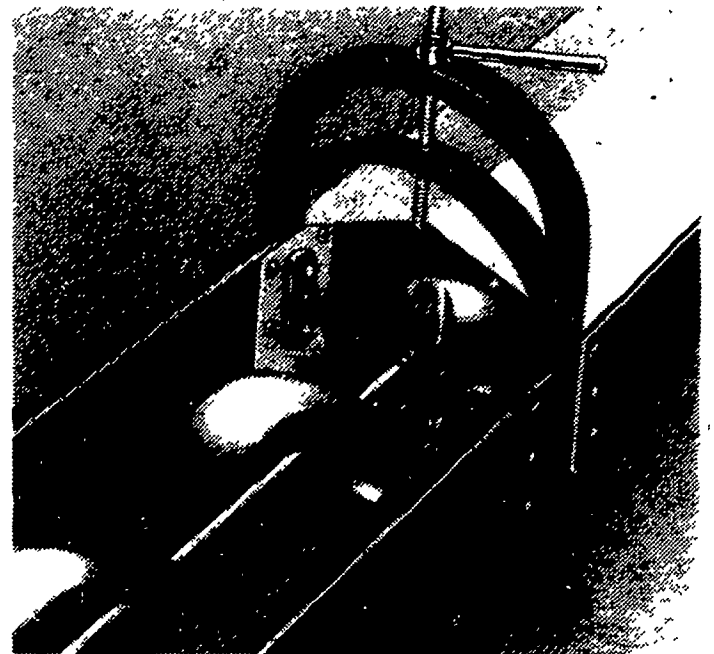
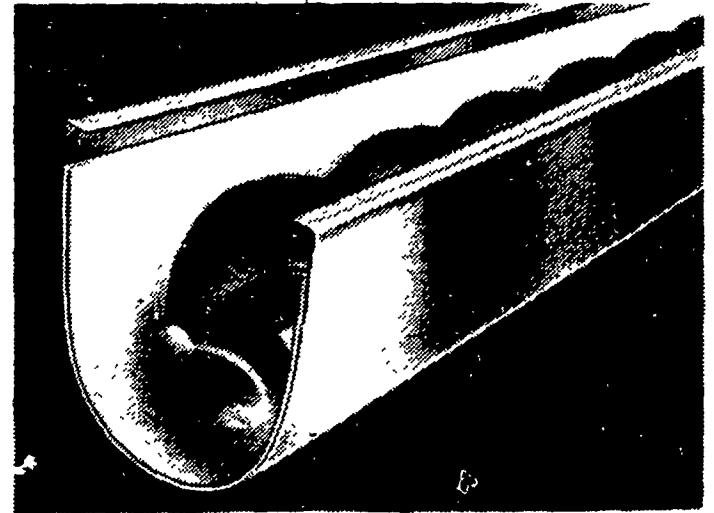
**\$100**

PER FOOT

with the purchase of a new, complete 10" or 13" U-trough

OR

a 9" or 12" Auger Bunk Feeder installation. Valid on complete installations only that are purchased between July 1st and Sept. 30th, 1983.



Stop By And See Us At  
**AG PROGRESS DAYS**  
 Aug. 23, 24, 25th  
 Located on West 5th St.

**ASK ABOUT OUR SPECIAL SHOW DISCOUNTS ON ALL EQUIPMENT**