

Tractor safety

(Continued from Page A34)

Operators caught in this type accident often die from the steering wheel puncturing their chest, says the safety specialist. That type injury, he adds, leaves little chance for survival.

Gunning the engine when a wheel is stuck, such as in a field mudhole or sink, is another frequent cause of rear tractor flips. Should the tire suddenly catch hold while the motor is under full power, the rear axle torque, or turning power, may cause the entire tractor, rather than the wheel, to flip backward. In some cases, the tire has flown free from the wheel, and caught the operator in the head.

"You're taking a big chance if you try to become unstuck that way," Murphy warns.

A similar rear-axle-torque related flip can occur when a tractor momentarily loses power while going uphill, causing the forward motion to stop, and begins drifting backward down the grade. To regain movement uphill, the

operator may hit full engine power, hoping for a burst of speed. Instead, the rear axle torque causes the opposite effect, or flips the machine backward.

Using a battery-controlled model tractor and slanted pieces of plywood, Murphy demonstrated the results of these various operator errors, with recom-

mendations on how to avoid being caught in such accidents.

Always a favorite part of the field day, the morning judging classes consisted of a class each of four aged cows and four two-year-olds, with Jed Beshore and Paul King tapped as the scoring officials.

Winner of the adult division was Lynn Wolf, Abbottstown R1, while Glen Rock 4-H'er David Krone took the prizes in the junior division.



Winner of the York Holstein junior judging division was Dave Krone, while Lynn Wolf took the adult honors.



With a demonstration that vividly portrayed the "hows" and "whys" of tractor rollovers, Penn State safety expert Dennis Murphy put his model machine through its paces.



THINK AHEAD...
Read Futures Markets on Page 3.

PAUL B. Zimmerman INC.

USED STEEL TANKS

OVER 150 IN STOCK
275 Gal. to 20,000 Gal.

Can Be Used For -

- Feed and grain bins
- Livestock water tanks
- Feeding troughs
- Tolls & Bridges
- Manure Storage
- Fertilizer Storage

PAUL B. ZIMMERMAN, Inc.

Hardware • Farm Supplies
Custom Manufacturing • Crane Service
Box 128, R.D. #4, Lititz, PA 17543
Wood Corner Rd., 1 Mile West of Ephrata
Phone: 717-738-1121

Make a date with FORD'S SWEET 17



ALLEN H. MATZ, INC.

505 E. Main St., New Holland
Ph: 717-354-2214

SERVING THE COMMUNITY
THIRTY-FOUR YEARS

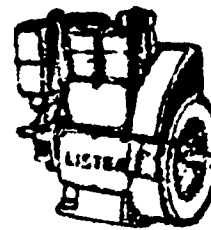
LANC. CO'S OLDEST FORD DEALER

SMUCKER'S SALES & SERVICE, INC.

RD #2, BOX 21
NEW HOLLAND, PA 17557

LISTER, PERKINS & DEUTZ DIESELS

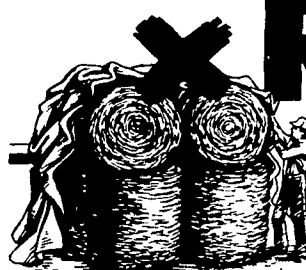
- Good used diesel engines
- New Sputnik wheels & parts



2 Cyl. F2L-912

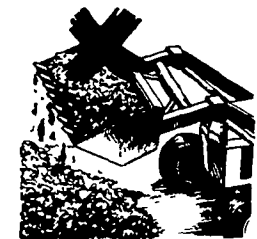
FOR PROMPT SERVICE CALL
717-354-4158 OR IF NO ANSWER
CALL 717-354-4374

STOP THIS ROT.



Anchor Sila-Lator 2X or Silage Inoculant 160X keeps out rot, seals in nutrients.

Inside every untreated silo pit and bale of hay lurks rot. The monster that eats protein and energy leaving a trail of waste, nutrient loss and musty stale forage behind it. Now you can stop this rot with Anchor silage inoculants—Sila Lator 2X for dry application or Silage Inoculant 160X for liquid. Both are proven microbiotic products that help preserve most types of silage—corn silage, haylage and high moisture corn—and now baled hay.



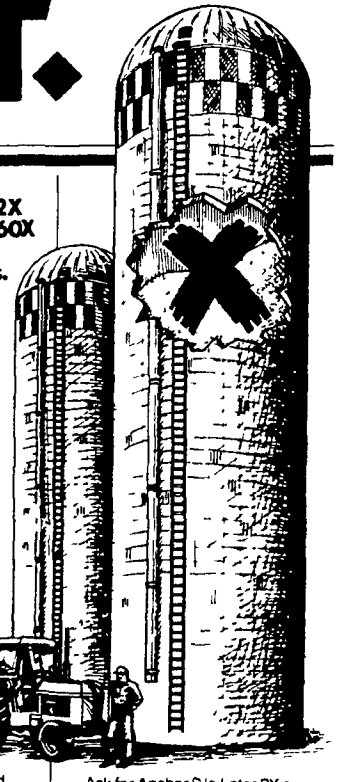
With Anchor silage inoculants you get the fastest protection possible against rot. That's because they contain a specially selected team of beneficial bacteria, aided by four enzymes, featuring something no one else has—Streptococcus faecium Cemele 68.

This patented bacterial strain beats rot to the punch multiplying more than twice as fast as other strains. And unlike other strains, it grows in highly preservative pH's as low as 3.2 in both hot and cold conditions.

With rot under control you get more protein and energy, more dry matter, improved palatability, less heat loss and runoff. That's proven in leading university trials. So you can store your silage or baled hay longer and get better-doing animals from better-quality silage or hay.

You might think that fighting rot is a costly battle. Not true with Anchor silage inoculants. It's less than a dollar a ton to treat silage. And it's only a fraction of the cost of acid preparations to treat baled hay. Application is also a snap.

Now's the time to control musty rotten forage. And nothing does it faster than Anchor silage inoculants—for higher protein, higher energy silage and hay.



Ask for Anchor Sila Lator 2X or Anchor Silage Inoculant 160X today from your Anchor animal health supplier. Or call toll-free 1-800-821-7467 and ask for Don Hoff. (In Missouri call collect 1-816-233-1385)

ANCHOR
ANCHOR LABORATORIES, INC.
2621 N. Bell Highway St. Joseph, MO 64502

Available At:

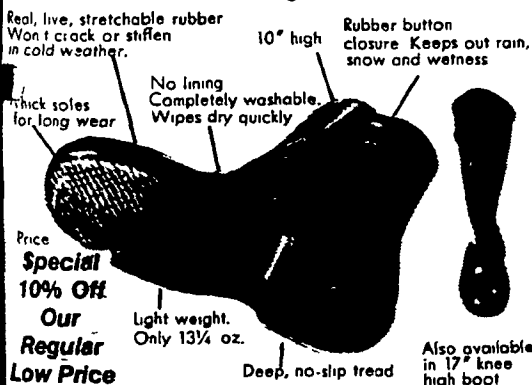
L.L. AGRI-SERVICE
RD 6
Manheim Pa 17545
717-665-6727

J. MELVIN WENGER
RD 1, Box 312
Elizabethtown Pa 17022
717-367-2126

ARTHUR BRANDT
1600 King St
Lebanon Pa 17042
717-273-7063

ELWYN KIE/AGRI-SERVICE
P.O. Box 153 2 E South Ave
Canton Pa 17724
717-673-8102

How to buy a boot



Price Special 10% OFF Our Regular Low Price

TINGLEY

Can Ship UPS
DANIEL'S FARM STORE
Located between Leola & Talmage along Rt. 772
R1, Leola, PA 17540
717-656-6982

WE'VE MOVED!

Our New Location Is
R.D. 3, EPHRATA
Located 1 Mile East of Ephrata
On Rt. 322

STOP IN & SEE
OUR NEW SHOWROOM

New Hours:

Monday - Closed
Tuesday & Wednesday - 10 AM - 6 PM
Thursday & Friday - 10 AM - 8 PM
Saturday - 10 AM - 4 PM

Bowman's Stove Shop

R.D. 3, Ephrata, PA 17522 Tues., Wed. 10-6
Rt. 322, 1 Mile East Thurs., Fri. 10-8
of Ephrata Sat. 10-4

717-733-4973
Financing Available

