

GRAIN EQUIPMENT

GRAIN EQUIPMENT

GRAIN EQUIPMENT

GRAIN EQUIPMENT

GRAIN EQUIPMENT

## Silver-Sweet Galvanized Elevator Legs

When You Care Enough To Install The Very Best.



Traditionally known for its "Quality Line" and many years experience—Sweet now has an even wider range of products and services for YOU "Sweet" people design and manufacture the finest farm and commercial material handling equipment both on a national and international scale

Full Service Grain Handling Dealer

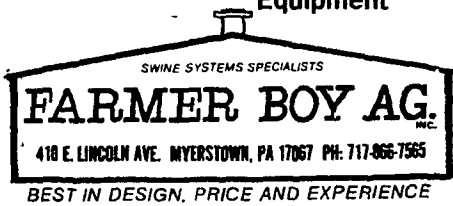
**AGRI-EQUIPMENT, INC.**

Complete Systems & Equipment For Cattle, Hog, Poultry & Grain

2754 CREEK HILL RD.  
LEOLA, PA. 17540  
PH: 717-656-4151  
★ SERVING PA, NJ and NY

## SEE US FOR ALL YOUR GRAIN EQUIPMENT NEEDS

- Augers
- Bulk Bins
- Grain Bins
- All Types Of Feed Handling Equipment

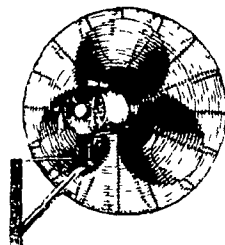


418 E. LINCOLN AVE. MYERSTOWN, PA 17067 PH: 717-866-7565  
BEST IN DESIGN, PRICE AND EXPERIENCE

DAIRY EQUIPMENT

DAIRY EQUIPMENT

## Fans For Your Cows?



Why not keep 'em cool - Maintain your milk production.

But don't take our word for it! Ask a neighbor who already has them.

Circulating, Exhaust & Portable Fans Available in Hydraulic or Electric

### BEILER HYDRA-MATICS

Hydraulic & Air Supplies  
Sales • Service • Installations  
Welding & Machine Shop  
(717) 656-2846  
Box 587 RD #3 New Holland, PA 17557

DAIRY EQUIPMENT

DAIRY EQUIPMENT

## USED EQUIPMENT

2 used Calumet 3250 Gallon Spreader Tanks and 12 ft. Vertical-Shaft Pump available  
Priced From

**\$2950 to \$3950**

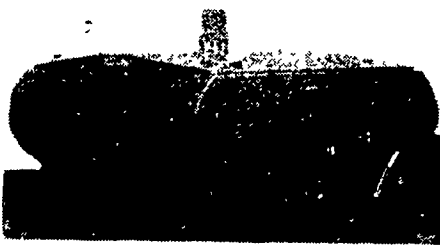
Average To Good Condition Traded For US Farm Systems Equipment

- Money back guarantee • if you are not satisfied

**US AGRI-SYSTEMS**

3053 Barren Rd., Oxford, PA 19363  
(301) 398-2948

## MUELLER USED 600 GAL. M



USED TANKS 900 Gal. OH Mueller 1000 Gal. Sunset

USED COMPRESSORS 3 HP Lehigh

### ENGINES

- 1 New 4 HP Tacumseh Gas
- 1 Used 3 HP Briggs & Stratton
- 2 Used 5 HP Briggs & Stratton

### QUEEN ROAD REFRIGERATION

Box 67, Intercourse, PA 17543  
Phone: 717-768-9006 or Answering Service - 717-354-4374  
★ 24 HOUR SERVICE

For Sale - 3 used "Long" storage bins w/door, 10,000 bushels each, 30 ft. dia., 16 ft. high to roof. Equipped w/air ducts. Large 7" auger to fill bins and sweep auger. Name can be supplied to disassemble and reassemble bins, 25 ton Fairbanks mower truck scales. Call 717-626-2296.

DAIRY EQUIPMENT

**HOLE**

**Manure Equipment**  
Engineered to perform. Built to last!

**wic**

**Bedding Choppers, Silage and Feed Carts**

**US AGRI SYSTEMS**

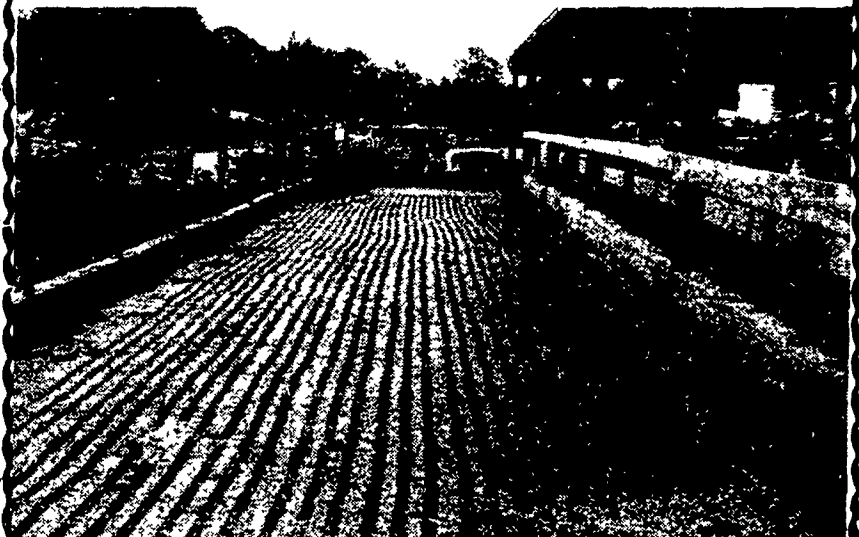
**Stalls For All Needs, Self-Locking Panels, Gutter Grates, Barn Cleaner Chains**

Oxford, Pa. (301) 398-2948

## SAVE VALUABLE COWS FROM FALLS ON SLICK CONCRETE

Scabbling has become the most efficient way to end slick concrete problems. Hundreds and hundreds of farmers have found it both effective and economical.

We have developed the right equipment at the right price with the know-how to back it up.



Now you can rent this equipment and do it yourself or we will contract to do the job for you. Call us collect for more information.

## SUBURBAN RENTALS, INC.

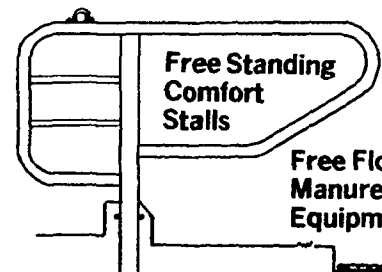
Hagerstown, MD  
Please call us Collect (301) 790-1303

Now serving a 10-state area

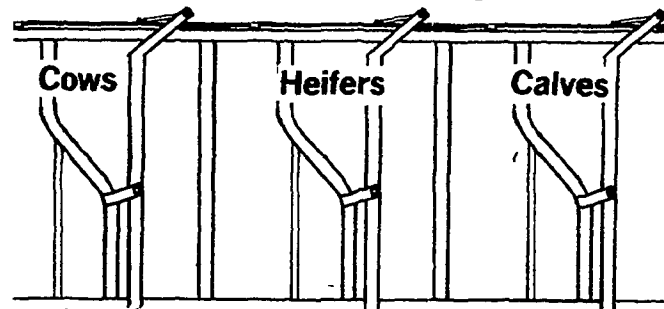
## BUY DIRECT AND SAVE

**Big-Strong 2 3/8" Galvanized Free Stalls**

Custom Made Stalls to Your Design or Ours



## Self-Locking Feeding Panels



Clamps, Cowmats, Water Bowls  
WE DELIVER OR LOAD YOUR TRUCK

For Prices & Literature, Call or Write today:  
**US AGRI-SYSTEMS**  
3053 Barren Rd. Oxford, PA 19363  
(301) 398-2948

BUILDINGS & SUPPLIES

Good used blue styrofoam insulation sheets. 16"x54"x3" thick, 24"x48"x2" thick, approx. 1/2 of new price. Also miscellaneous butcher equipment and supplies, used ammonia and Freon equipment. 717-667-2185.

Barn 50x35' w/attached 11x30' wagon shed. 717-264-8370.

10x12 building, free for removal. 215-273-3095.

Free materials to anyone interested in tearing down 29 unit apt. building near Pottstown, PA. 215-323-7464 Mon.-Fri. 9-5, ask for Ginny.

1740' 1 story modern chicken house for sale, Manheim area, 215-874-5077

## POLY DOME CALF NURSERY

"The Igloo"



- How often should you move a wooden hutch?
- How often do you?
- Ours are easy to move yet wind resistant.
- No seams or joints to shelter bacteria.
- We are stacked up with Poly Dome Nurseries.
- Reduce our stock and increase your savings by buying now.

Call or write to Earle M. Zimmerman  
1748 Colebrook Rd.  
Lebanon, PA 17042  
1-(717) 272-3558

Special Prices Now Thru August

Clip & Save