

FORRESTER FARMS

1337 Lincoln Highway East
Chambersburg, PA 17201
Phone: 717-263-0705
Sales - Parts - Service

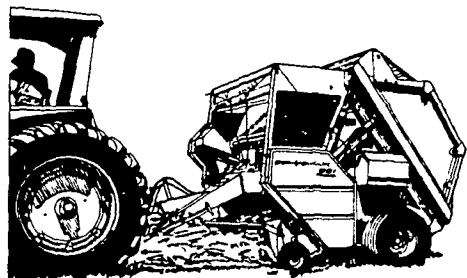


SALE PRICED

New Long 610 DTC, 4WD, 64 HP, \$12,500	JD 2130
New Long 610, 64 HP, \$10,200	JD 2120
New Long 510, 48 HP, \$8,500	Ford 8600 w/dual power
New Long 310 DTC, \$8,600, 28 HP	Ford 6610
New Long 460, 41 HP, \$7,900	2 Ford 6600 w/cab
IH 1086 w/cab	Ford 5600 4 wheel drive
IH 966 w/cab	5 Ford 5000 2 w/dual power and cab
IH 806	4 Ford 4000, one w/loader
Year-round cab for IH w/air conditioner	Ford 541 offset
JD 2840	3 Ford 8N
Cab for JD 2840	MF 1150 w/cab
2 JD 3130 1 w/cab	MF 175
3 JD 3120	Case V
	Wolverine 25' goose-neck trailer
	Moore no-till drill

1/4 Mile East of Exit 6 I-81
Hours: 8:30 - 5:00 Mon. - Fri.
8:30 - 12:00 Saturdays

851 Round Baler



BIG DEAL

The Model 851 from Sperry New Holland with Super-Sweep pickup and fines saver pans get more hay in every bale. Sure, fast core formation gets you off to a fast start.

The 851 Demonstrator (baled 25 bales) with New Holland Sales Allowance **SPECIAL PRICE \$7,000.**

(Current list price as equipped \$11,550) Also Special Sales Allowance on 852 Large, 846 and 847 Smaller Round Balers.

Special Terms for a limited time. 0% financing till April 1, 1984 with interim payment or 4.9%, 7.9% or 10.9% APR for 12, 24 or 36 mos. respectively.

USED EQUIPMENT

NH 1895 S P Fg. Harvester Cut PU, 12 Double edge unbeveled Knives, Metal detector.
NH 3RN Low-profile Crop Head
NH 3RN Ear Snapper Head
NH 880 Windrow Pickup Head
NH S717 1R Fg. Harv. \$785
Gehl PTO Blower \$495
AC Hopper Blower Belt Driven \$150
NH L-325 Skid Steer Loader
Ford 40 h.p. Skid Steer Loader, Ex. cond., only 1100 hrs, Trms \$6500
NH 1469 SP Haybine w/Ford PU. \$3790
NH 469 Haybine \$1685
NH 367 Flail Spreader \$1890
NH 328 138 bu. Spreader, 2 beater
NH 273 PTO Baler, Ld. Chute \$1550
Ford 250 PTO Baler \$350
Ejector for 247 Baler \$200

AUTHORIZED

SPERRY NEW HOLLAND

PARTS and SERVICE

STARLINE VANDALE

ROYA

BRUBAKER

SALES * SERVICE

Phone: 717-626-7766 or 626-1859
700 Woodcrest Avenue, RD3, Lititz, PA

TRACTORS AND EQUIP. JUST PURCHASED (New A.C. 8050 P.S. w/radial tires list 56, cost 44, our price \$35,850. used JD 4640 P.S. fully eq. like new; used JD 4440 Q.R. 300 hrs. like new, used JD 4440 C.A., P.S., looks like new. Farm 1066 CA, (SOLD) 20x38 tires, clean. JD 4630 cab, air P.S. w/front whl. drive; Farmall 786, Farmall 766 original; Ford 640, MF 300 diesel combine w/cab and air grain and 3 row C.H. (nice); NI 325 picker w/12 roll bed; N.I. 324 picker w/12 roll bed; NI 279 cut/di(SOLD)tioner; JD 310 Disk, like new; FROM 5 FARMS Farmall 1566 C.A. w/20:8x38 factory duals is in field working for sale field ready, Case 1370 C.A. PS - factory duals and full wts., field ready. JD 4010 D.W.F. Dual Hydraulic, AC, 7010 C.A., P.S., 20:8x38 tires, full wts., light package looks like new, AC 220, AC 5040 used 130 hrs. Ford 7600 w/dual power, MF 1000D nice. JD 5020 nice original w/dual wheels. Farmall 966 original for \$9800.00. Farmall 504 original w/P.S. and 3 pt. Int. 674 w/loader. Oliver 880 W.F. fully equip. White 4-150-4 Wheel drive, fully equip. for \$12,500.00. JD 4010 gas, 4020, 2630 w/146 loader, JD 2840, JD 430 utility w/loader; JD 60; Farmall 1066 w/cab & air \$12,800. Int. 444 utility gas, w/P.S. for \$3850. Farmall 1066 for \$9950. Farmall 1566 C.A. w/20x38 duals used 1200 hrs. extra nice, Farmall 656 gas. 706 gas, Case D.B., 990; Farmall Super A w/cult. Int. Cub 154 Lowboy.

Hay eq. just traded, used NH 320 baler, Rakes, new NH 256, MC 9E Rotary Scythe.

New Holland 1034 Auto-Bale Wagon used 3 yrs. NH 1012 and 1010 bale wagons, used J.D. 3960 Harvester. 18 ft. hay bale wagon on 8 ton running gear.

JD 3020 Tri D. JD 4020D W.F., D.L. and 2 values w/cab. New Ford 7600 w/front whl. drive, JD 4020D W.F. P.S. 2640, Farmalls 1566 4 post R.G. w/duals, 1066 w/cab, 886 w/cab, like new; 1206 extra nice, 756D W.F. original, Int. 674 Utility D. N.H. 363 tank spreader 1 yr. old. CHISEL PLOWS - New Ford 13-15-17 ft. 3 pt. w/gauge whls.

HAYBINES (new) Int. 1190 Last \$8900. Our Price \$6450. only 1 left. New Gehl 1090 for \$4850. New NI 272 cut/ditioner - \$3450; Used NH 489-\$4000; Used NH 489-\$3875; Used NH 477 used 85 acres, like new N.H., 479. Used JD 1209-\$2475; New & used Grim 4 star hay tedders.

(Just Traded) N.I. 702 um w/729A sheller and 743 3 row Q.A. corn head, real nice and field ready.

New AC 7010 w/20 sp. trans. Farmall 686D, MF 1806 4 whl. drive fully eq. for \$16,500. White 4-180 4-whl. drive, fully eq. \$16,500. Used 966-1 owner original, 1972 JD 4020, 3020 S.C. power shift, JD 4020 S.C. w/cab, 1968 JD 4020. Used Case 2090,

MF 1135 w/cab, Ford 3000D. Farmall 350 w/P.S. and F.H., Farmall 450 gas PS and F.H., Ford 6000 Commander D, comp. rebuilt.

Balers (new), NH 315 w/75 thrower for \$9300. used JD 336 w/thrower real nice; Int. 440 w/thrower (SOLD). NH 280 w/hydraulic tension and thrower in field working. New Idea #456 round baler, (new), NI 404 wheel rakes \$985.

(Combines on our lot) 1977 JD 4400 Dsl. CA real nice like new; JD 8820 fully eq. w/4 whl drive and dual wheels used 450 hrs. like new. New JD 4420 fully equip. 443 C.H. New Holland TR 85 w/grain and 6 row C.H. like new. Int. 1460 axel flo fully eq. w/both heads IH 715 w/German motor used 400 hrs. like new. 1975 JD 6600D rotary screen, good cond. 1976 Int. 715D, w/air & 13 ft. grain, field ready, never used in corn, 1977 Gleaner L2 hydro w/6 row C.H. 1976 Gleaner FD w/air and both heads; 1976 Gleaner KKS cab & air w/grain, 1976 Int. 915 grain head \$19,900, 1979 MF 550D, excel. w/grain and corn heads. 1975-MF 510 hydra. w/grain and corn.

MF 410 D. w/cab & Q.T. Grain head.

MF 510D w/cab, Quick Tach grain for \$6950. Case 960 w/cab and grain, real nice.

1968 Gleaner CII diesel w/cab and 4 row C.H., JD 7700 D w/grain & corn head.

1969 JD 55 sq. back corn special w/cab and 2 heads; Int 715 gas w/cab, 810 gram Int. 810 13 ft. floating cutter bar.

Int. 303 w/cab, 1972 Gleaner F w/grain & C.H.

JD 6600D combine w/flex grain and C.H., AC 90 pull combine.

NI 702D w/cab \$6200. NI 702 w/729 A sheller.

JUST TRADED - used Int. 3588 2+2 Int. 966 w/cab, 886 w/cab, 1066, Farmall M w/NI 319 mtd. picker, Ford 7600 w/dual power, Case 1410D. (Harvesters) NH 890 w/3 row 30" C.H. 2 row snapper head and pickup head. JD 243 snapper head. Forage Wagons.

NH #8 Tandem Axle, JD 216 - tandem axle. Lamco Forage Wagon - 18 ft. Hay wagons w/8 ton running gears. NI 325 picker w/12 roll bed, JD 237 mtd. picker and sheller.

Just Purchased (new) 2 NI 323 cornpickers at old prices. (new) NI 272 cutditioner.

Used Fahr rotary 7 ft. haybine. JD 340 12 ft. offset disc, Glenco SS9 Soil Saver, JD 210 14 ft. Disc, JD B 16DD w/grass seed drill, Glenco SS13 Hyd. fold Soil Saver, Hesston #30 Stakhand.

TRACTORS & EQUIP. Farmall 1566 w/cab and duals, Used White 2-105 w/roll guard.

New John Deeres 4240 cab & air Q.R. for \$29,900; New JD 4440 C.A. QR w/radial tires. Six real nice balers, NH 851 Round Baler (nice); JD 500 Round Baler; Hawk Built round baler.

3 used NH baler w/throwers #280, 269. Corn Heads JD 643, 444, 843, 343, 443, 435N, 313 for 45C, 334, 235,

Massey Ferguson 1144 like new, 63, 43, 44, 24, 222, 422, Gleaner L438, F430, L630, F438, K238, F335, F330, M430, K330, Int. 863, 864, 843, 743, 227, NI 4 row 40" heads, Case 4 row 40", MF 44 & 43 Lo Profile, Int. 6 row, 30" for 503, NH 4 row 38" C.H. New JD 444 \$7350, used White 706N C.H. NI 738 and 728 4 row 30"

(New Farmalls) 5088 fully eq., 3688 fully eq.

(Used Farmalls) 986 w/cab, 686 nice. 706 gas, 806 diesel w/cab original - Nice. 1206 real nice, used JD 4230 w/R.G. and creeper gear, 1966-4020. We have 6 JD 4020 side console diesels. JD 2440 w/R.G., JD 2640, 1970 JD 5020, 4010D WF w/dual, hydraulic, Ford TW20 w/cab w/220 hrs., damaged, give us an offer, 1972 JD 4020D, WF. JDA w/P.S. & loader. Farmall H, Ferguson 35 original.

TRACTORS AND EQUIP. New NI 324 picker w/super sheller list \$15,890. Special \$8,475. New NI 325 picker w/super sheller, Farmall 706 w/310 German D w/cab, JD 2520D, MF 1135 w/R.G. and dual wheels, MF 1105 w/cab, real nice, Int. 656 utility Hydro D. NH 890 2 row snapper head. JD narrow 30" 2 row head, like new.

NI 325 pickup w/12 roll bed used 4 yrs.

TRACTORS 1977 JD 4230 cab, air, quad, real nice. JD 4320, Farmall used 1566 cab and air w/new T.A., Farmall 544 gas W.F. Farmall 706D WF & 3 pt.; NI 324 picker w/super sheller used 80 acres.

JD 4020 W.F. power shift, good tires; Case 1070 P.S. \$6975; JD 4010 Tri D, Farmall 766, 1 Case 930 Standard, New Holland 770 w/2 row 30" C.H. NH 890 Harvester w/2 heads, Deutz 9006.

CULTIVATORS - New Case 3 pt. 8 row Hydro fold. JD 4 row & JD 6 row rear.

CORN PICKERS - Used N.I. 325 w/12 roll bed current moded. Used (2) N.I. 324 w/12 roll bed (325 N. w/sheller), NI 3 row 30" picker w/super sheller, New Idea shellers and Super shellers, N.I. 2 row 30" picker w/grinder. Int. 234 w/12 roll bed. NI 319 mtd. picker, JD 300 w/2 or 3 row C.H. Used NI 323, 324, #10.

JD 4020 w/58 Loader, JD 4320 w/cab.

Farmall - 1568 - V8 w/cab & air used 1000 hrs., 1566 w/cab, 1466 w/cab. 886 w/cab, 800 hrs., like new. 856D nice, Steiger Bearcat 4 whl. drive w/dual wheels and new motor in excell. cond.; Farmall 460 Gas w/F.H., Farmall 756 gas, Hi Crop-656 diesel, 756, Cub Cadets 1650, 1450, JD 300, 210, 112, Farmall cub w/mowers.

Cub 154 Lo-Boy.

HARVESTERS. N.H. 770 w/2 (SOLD) w/cab, Used Int. 720 - 2 row. NH Super 717 1 row, J.D. 38 Chopper w/2 row, JD 3800 w/2 row C.H., Fox 2 row snapper head. NH 770 1 row snapper C.H. Gehl 400 w/2 row snapper head W.N. and pickup head, Fox 2 row 30" Silage Head, JD 1 row snapper head for 38 & 3000.

ALLIS CHALMERS AC

185 w/turbo. 7040 w/cab, power shift like new, low hrs. 220 original, 180D, 210 w/new 20.8x38 tires, AC H3 Crawler w/blade and winch.

2 JD 4 wheel drives 8630 fully eq. w/duals; & 7520 fully eq. w/duals.

JD 4010 LP Gas (nice) \$3750.

JD 4030, JD 5020 puller.

FARMALLS: used 1066 w/cab, air, 1 owner-looks like new, 20x38 tires for \$19,500, 1066 red cab & air, Used 686 w/cab & air, 1206 w/cab, 806 w/3 pt. & 38" wheels, Farmall 656 Diesel & 656 gas, Farmall hydro 70 w/w.f. and 3 pt., 826 hydro D nice. Farmall 400 gas w/P.S. F.H.

New White 2-65 w/front whl. drive and new 1730 loader, list \$29,000.

Dealers net \$23,700. Our special price \$21,850.

New White 2-105 w/cab \$22,850.

MASSEY FERGUSON - 2805 24 spd. w/duals nice, 2 MF 1155 w/C.A. M.P., MF 1130 for \$6250. MF 165D.

(Case) New 2090 Cab & Air, power shift. Case 1030D for \$5700. Case 830 W.F. and 3 pt. Case D.B. 1200 for \$3900. D.B. 995D, Oliver 1950T w/cab, 2050, 1855 w/20:8 tires 1800, 1850 w/cab, 1855 w/duals, Super 77 diesel, Ford 3000D, MM Vista 1000 w/cab and loader, MM S670 diesel.

JD 2510 gas.

N.I. 702 Uni tractors w/combines & 729A and 729 Uni shellers w-3 & 4 row 30" and 40" heads. Used JD 13 to 15 ft. grain heads

IND. EQUIPMENT - Int. 500E crawler loader w/270 hrs., like new, JD 555 Loader. Int. 510 4 whl. drive payclader used 500 hrs. like new. Cat 933 crawler loader.

AC 600-21 ft. forklift.

Int. 3400D. L&B Howard 3 pt. backhoe, Long 1199A-3 pt. Backhoe like new \$3850.

Ford 340 skid loader. JD 4020 w/58 loader.

Mechanics Specials. Case 1030 Needs Trans. work for \$3,000. Bobcat Skid Loader, Int. 3200 Skid Loader needs parts. Case 1410 motor. Farmall 706 gas needs trans work, \$2900.

MF 1155 CA MP needs trans. work \$8850.

JD 1020 D. wrecked; JD M.T. for parts (SOLD).

PLANTERS JD 7000 six row w/fert. fill, plateless, inst. w/minimum till & monitor, (new) White 5100 4 row planter w/monitor, JD 1460 6 row no-till liquid plateless inst. - \$1975, JD 6 row conservation inst. fert. fill, population monitor and acre fully equipped. Used White 5400 4 row air, w/dry, Inst. no till and monitor for \$2000.

Used JD 4 row conservation w/liquid fert. and monitor, Oliver 6 row no till w/dry fert., inst., fert. fill and population monitor JD 444 corn heads from \$2450 and up.

John Blue 400 gal. sprayer.

Cabs for JD and Int. Tractors. Glenco 12 ft. 9" Soil Finisher like new. JD B grain drill 14x7 w/grass seed \$575,

Farmall 560 w/Int. 234 mtd. picker, \$3775.00.

Pick-up heads for NH 770, 717, Miller 12 ft. offset disk, JD Disks #210 - 12x14 ft. New Westfield grain augers 41 ft. 8" KD=\$1395, 56 ft. 8" KD=1995. Used Manure spreaders - NI 214 nice, NI 14A, JD 54 & 40 like new, NH 346 tank spreader, 2-Int. 200 ground drive, excl., NH 27 & 28 Blowers, Kawanee 12 ft. roller harrow, good. H.N. 36 & 33 Flail choppers.

PLOWS - JD 2500 6x sp. reset, JD 5x hyd. Int. #700 5X auto reset, fully eq., White 5x auto reset, Oliver 4x15 rollover, JD 3x16 rollover, Chisel Plows, JD 10 ft. pull type, Brillion 10, 12, 13 ft. 3 pt. Chisel Plows. Brady 10 ft. chisel plow Rockland rock picker. New Johnson loader.

Bush Hog 6 & 10 ft. 3 pt. rotary cutters.

Int. 3 pt. 7 Shank V-ripper, Brillion 3 pt. 5 shank V-ripper, new 12 ft. 3 pt. field cultivator.

NI and JD wheel rakes, 2 Used Gravity Bins on running gears.

Straw choppers for combines; JD 4400, 7700, 6600, MF 510, 550.

JD Disks- TW 12 ft. heavy disk; White 252 - Dual wheel disk. JD 65 & 66 blower. Woods 4 row stalk shredder.

Used JD 400 15 ft. rotary hoes, Kawanee 22 ft. Wing Disk, Int. #510 24x7 DD grain drill-nice.

Int. 510 18x7 S.D. w/grass seed.

2 Ontario grain drills on steel wheels w/disc openers nice. 2 Ford 3x3 pt. plows.

Loaders - Used JD 146, MF loader for 1105, New G.B. loader, M.F. loader for S90 3 pt. hitch for 630 and 730 JD tractor. New and Used J.D. Quick Couplers. 4 Used 30.5 x 32 tires.

Int. front whl. drive atch for 56 & 66 Tractors.

No Till Attachment for Int. 4 row 400 planter complete.

TRUCKS - 1979 Chev. C65 24 ft. rollback w/61,000 miles, like new, KW truck tractor fully eq. looks like new, Delta 44 ft. combine trailer, 1980 Silverado Chevy diesel w/every option, looks like new.

(New) NH Direct cut head for 770. (New) Kill Bros. gravity bins. New Kill Bros. 6 & 8 & 10 ton running gears. Pick up heads for Int. 550, 650, 350, Fox pickup head, (20) sets of dual wheels all sizes.

JD front & rear weights, IH front and rear weights.

For your needs call:

STITZEL FARM EQ. INC.
East Windsor St. & Krick Lane
Hamburg, Pa. 19526
Phone Bus. 215-562-8377
home 215-562-7451