

# Livestock market and auction news

## Peach market news

**Wednesday, August 3**  
**Report Supplied by PDA**  
 The third week of Peach Market News reports light supplies with light demand and a lower market. The weather has retarded the ripening of peaches and has reduced the size.

Early varieties are finishing up this week and Red Havens and nectarines are being harvested now.

Report from New Jersey is light and exhibits weak undertones. Contact feels this is an inflated market and prices should drop.

Red Haven 38# U.S. Extra #1; 2" up \$12-14; 2 1/8 \$13-14 m. \$13; 2 1/4 \$16-17 m. \$16; 2 1/2 \$18-19.

Baltimore wholesale market very light; quiet trading Western Maryland 38#; Jerseyland No Grade \$10.00; 2 1/4" very few \$19.00.

South Carolina Supply Light Demand light Market lower 38# U.S. Extra #1, yellow flesh 2" min. \$9-10; 2" up \$11-12; 2 1/4 up \$13-14; 2 1/2 up Occ. \$16.

South Georgia supply light. Demand light. Market lower 38# extra #1 2 up \$11-12; 2 1/4 up \$13-14; 2 1/2 up occasional \$16.

California Good Demand on preferred peaches. Steady Market

2 layer lug tray pack according to color: 48-56 ct. \$5-7; 60-64 ct. \$4.50-6.00; 70-72 ct. \$4.00-5.00.

38# box 50 size peach-\$7.70-13.30 22-38 cents lb.; 60 size peach-\$7.70-12.60 22-36 cents lb.; 70 size peach-5.60-11.90 22-34 cents.

Washington State extra fancy 2 layer tray pack: Yakima Valley 36-54 ct. \$6.50-7.00; 60-70 ct. \$5.50-6.00; 36-54 ct. \$7.00 Wenatchee Valley.

The prices below are the latest wholesale, truckload, f.o.b. peach prices for Adams, Franklin, York and Berks Counties:

**SUMMARY**  
 38# cartons U.S. Extra #1, 2 1/4" up Red Haven-\$14.00-15.00; 38# cartons U.S. Extra #1 2 1/8 up Red Haven, Early Red Haven-13.00; 38# cartons U.S. Extra 2" up Sun Haven, Red Haven, Early Red Haven-11.00; 1/2 bu. crates orchard run Red Haven, Early Red Haven, Garnet Beauty, Sun Haven, Erii Glo-5.50-6.00m 5.50; Bushel crates O.R. Paulared-5.50; Bushel crates O.R. Summer Rambo Apples-6.00; 1/2 bu. crates yellow nectarines-8.00; 12/3 bags U.S. Fancy 2 1/4 up Summer Rambo Apples-8.00; 1/2 bu. crates plums-6.00-8.00m. \$7.00.

## Oklahoma Cattle

**Wednesday, Aug. 3**  
**Report Supplied By USDA**  
 Estimated Receipts 9,000  
 Same Day Last Week 12,560  
 Trade active, demand good. Feeder steers under 600 lb. steady. Feeder steers over 600 lb. 1.00-2.00 higher. Feeder heifers under 500 lb. steady; over 500 lb. firm to 1.00 higher. Buyer attendance good. Majority receipts medium frame 1 and mixed 1-2 500-900 lb. feeder steers and 450-700 lb. feeder heifers.

**FEEDER STEERS:** Medium, few Large Frame 1, few 375-475 lb. 65.75-65.80; 500-600 lb. 62.75-64.60; 600-700 lb. 61.10-63.25; 700-800 lb. 60.00-63.00; 800-900 lb. 59.00-61.40.  
 Small Frame 1 540-800 lb. 58.00-61.25.

Medium and Large Frame Mixed 1-2 425-450 lb. 62.50-63.50; 500-600 lb. 61.00-61.80; 600-800 lb. 57.20-61.50; 800-875 lb. 56.50-58.50.

Medium and Large Frame 2 575-700 lb. 52.50-57.90; small lot 920 lb. 50.10.

Large Frame 2 Holsteins 690-950 lb. 43.05-45.80.

**FEEDER HEIFERS:** Medium, few Large Frame 310-500 lb. 54.75-55.80; 500-725 lb. 54.00-56.00.

Small Frame 1, 420-650 lb. 51.00-52.05.

Medium and Large Frame Mixed 1-2 400-500 lb. 50.00-54.20; 500-700 lb. 50.00-53.70.

# PA. RETAIL PRODUCE



## Fruit & Vegetable Hotline

**Wednesday, August 3**  
**Report supplied by PDA**  
**APPLES:** 1.20 1/4 peck; 1.85 1/2 peck; 2.80 peck; 5.25 1/2 bushel; 6.99 bushel.  
**APRICOTS:** .65 lb.  
**GREEN & YELLOW STRING BEANS:** .75 lb.; .77 qt.; 1.25 1/4 peck; 2.00 1/2 peck; 6.00 1/2 bushel; 11.65 bushel.  
**ITALIAN BEANS:** .75 lb.  
**WAX BEANS:** .59 lb.  
**BLACKBERRIES:** 1.00 pt.; 2.25 qt.  
**BLUEBERRIES:** 1.15 pt.; 2.05 qt.  
**RED RASPBERRIES:** 1.69 pt.  
**BROCCOLI:** .79 head.  
**RED BEETS:** .50 bunch.  
**CABBAGE:** .19 lb.; .35-.59 head accd. to size.  
**SWEET CORN:** 1.35-2.50 dozen; average 1.87.  
**CUCUMBERS:** 4/1.00 & 5/1.00.  
**PICKLING CUCUMBERS:** .10 ea.; 11/1.00; 3.95 peck.  
**CAULIFLOWER:** .75-1.50 head; average 1.05.  
**CANTALOPE:** .49-1.79 accd. to size; large ave. 1.40; med. avg. 1.10; small avg. .69.  
**CIDER:** 2.50 gal.  
**CARROTS:** .55 dozen.  
**SWEET CHERRIES:** .99 pt.; 1.50 qt.  
**EGGPLANT:** .29 lb.  
**HONEY:** 1.75 lb.  
**LETTUCE:** .59 head.  
**HYDROPONIC LETTUCE:** .39 ea.  
**MUSHROOMS:** 1.35 for 12 oz.  
**NECTARINES:** .90 qt.

**ONIONS:** .35 lb.  
**PARSLEY:** .29 bunch.  
**PEACHES:** 1.44 qt.; 1.95 1/4 peck; 3.05 1/2 peck; 5.00 peck; 7.50 1/2 bu.; 11.95 bu.  
**POTATOES:** .25 lb.; .59 qt.; .99 1/4 peck; 1.95 1/2 peck.  
**HOT PEPPERS:** .05 ea.; 1.25 1/4 peck; 2.50 1/2 peck.  
**BELL PEPPERS:** 5/1.00; 2.00 1/4 peck.  
**PLUMS:** .75 pt.; 1.25 qt.; .75 lb.  
**RADISHES:** .30 bunch.  
**RHUBARB:** .50 bunch.  
**ZUCCHINI & SUMMER SQUASH:** .35 ea. & .35 lb.  
**TOMATOES:** .59-.89 lb. accd. to size; avg. .75 lb.  
**TURNIPS:** .89 lb.

## Lancaster Feeder Cattle

**Friday, July 29**  
**Report supplied by USDA**

Today 407  
 Last Friday 381  
 Last Year 118  
**TREND:** Feeder steers under very light demand, with not enough sold for a market test.  
**FEEDER STEERS:** One lot Medium, few Large Frame No. 1 700 lb. 60.25; lot Medium, few Small Frame No. 1 830 lb. 55.35.

## Good's Hay

Leola, Pa.

**Wednesday, August 3**  
**Report supplied by auction**

86 loads.  
 Mixed hay 60.00-118.00; Alfalfa 75.00-122.00; Timothy 83.00-106.00; Straw 61.00-76.00; Corn 108.00-122.00; Grass alfalfa (two loads) 54.00, 58.00; Rye 4.40-4.50 bu.

## LOUIS LYONS & SON

Consign your cattle and hogs, feeder pigs & calves to Louis Lyons & Son. They offer choice service, excellent sorting & marketing of your livestock.

Charles Diller, Manager  
 Phone 394-7915  
 Burnell Siegrist - Buyer & Seller  
 Phone 626-8653

Experienced Personnel

## FRIDAY, SEPTEMBER 2 ON THE FARM MONTHLY BRED GILT SALE

Sale to Start Promptly at 7:30  
 Every 4 Weeks

1 More Evening Sale  
 Sept. 2 7:30

Located 18 miles south of Lancaster, Pa., 6 miles south of Quarryville, take Rt. 272 to Little Britain, turn north, follow Little Britain Road to Jackson Road, 2nd farm, OR take Rt. 222, out of Quarryville to Cedar Hill Road to Little Britain Road to Jackson Road. Watch for sale arrows.

50 to 60 Head

Now selling our new hybrid gilts representing mostly York & Hampshire & Landrace cross. Bred for easier & less trouble over farrowing and better weight gains.

Validated Brucellosis Free Herd #169  
 Qualified Pseudorabies Free Herd #55

Hand mated with Breeding Dates

Local Trucker Available  
 No Hogs Sold On Commission

CHRIST A. BEILER  
 R.D. 2, Quarryville, Pa  
 JOHN B. STOLTZFUS  
 R.D. 1, Kirkwood, Pa

Abe Diefenbach, Auctioneer

NEXT SALE DATE SEPTEMBER 30

## Green Dragon Livestock Sales

1 Mile North of Ephrata, PA



**COWS COWS COWS**  
**BUYERS FROM 3 STATES**

Regular consignments from Bob Kennedy & Ed Stover plus 15 other local consignors. Lots of good Northern Feeders and Stockers.

## SALE EVERY FRIDAY

Bulls, Steers, Slaughter Cows, Lambs and Veal Calves

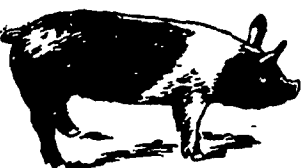
11:00 A.M. - Beef Sale Stockers & Feeders 200 to 250 each week.

12:30 P.M. - Dairy Cows

7:00 P.M. - Small Animal Sale

For Special Sales and Herd Dispersals on the farm or at our barn or other market information call: Office 717-733-2444.

WALTER H. RISSER, Proprietor



**EMERY'S  
 BUYING  
 STATION**

**OPEN TO RECEIVE  
 YOUR MARKET HOGS**

**AT THE GREEN DRAGON MARKET  
 RD 4, EPHRATA, PA 17522  
 1 MILE NORTH OF EPHRATA  
 ON NORTH STATE STREET.**

**HOURS  
 MONDAY, TUESDAY, and  
 WEDNESDAY  
 6:00 A.M. to 11:30 A.M.**

215-458-5677 Residence  
 717-733-9648 Office

**YOU ARE PAID FOR YOUR  
 HOGS IMMEDIATELY**

Ken & Lois Emery, Proprietors



## ATTENTION FARMERS

**EVERY MONDAY  
 HATFIELD PACKING CO. and  
 BAUMS MEAT PACKING  
 Will Receive Your  
 Hogs and Cattle at the  
 DANVILLE LIVESTOCK MARKET  
 RD4, Danville, PA**

- We will receive your hogs from 8 AM to 12 Noon every Monday. Your hogs will be weighed and paid for immediately.
  - We will also accept your sows & boars.
  - Your cattle will be received from 12 Noon to 4 PM. We will either pay for your cattle immediately or you may sell them dressed weight.
  - There will not be a commission or yardage fee deducted from your check.
  - You may call our office Monday morning and we will be able to tell you the base price for hogs for the day.
  - Please come and give us a chance to continue doing business with you through this method.
- FOR INFORMATION CALL  
 717-275-2860**



**A LESSON  
 WELL  
 LEARNED...  
 LANCASTER  
 FARMING'S  
 CLASSIFIED  
 ADS  
 GET RESULTS!  
 Phone:  
 717-394-3047  
 or  
 717-626-1164**

## CATTLE HAULING

\* Straight Truck and  
 \* Tractor Trailer Available  
 Call  
 717-665-7953