

## New electrolyte formula available

KALAMAZOO, Mich. — A new calf electrolyte formulation, Biolyte, designed to provide nutritional support for and restore electrolyte balance in diarrheic calves, is now available to veterinarians.

Marketed by The Upjohn Company, Biolyte is formulated to correct the dehydration, acidosis and electrolyte imbalances that occur in diarrheic calves.

"Neonatal diarrheal diseases cause the death of 5 to 25 percent of all calves born in the United States," states Dr. Gene Swenson, Upjohn researcher. "The actual cause of death is usually not directly attributed to the infectious organisms that cause diarrheal diseases. Death most often results when the dehydration, acidosis and electrolyte imbalances occurring in diarrheic calves are not corrected."

According to Dr. Swenson,

problems that must be corrected in the diarrheic and dehydrated neonatal calf are:

1) hemoconcentration and decreased blood volume due to extensive water losses from the extracellular body fluids.

2) total body potassium deficit in spite of an above-normal level of potassium in the blood (hyperkalemia).

3) total body deficits of sodium and chloride.

4) acidosis from increased hydrogen ions in the body mainly due to bicarbonate losses.

5) hypoglycemia and lack of available energy to body cells which results in decreased cellular metabolism.

"Biolyte plays an important role in correcting these problems," emphasizes Dr. Swenson. "The product contains a high level of potassium, which helps correct the potassium imbalance, plus

sodium, magnesium, bicarbonate and chloride, to replace those lost electrolytes. The bicarbonate aids in correcting the acidosis. The formulation also contains a substantial amount of glucose which provides a readily available energy source to correct the hypoglycemia and facilitate the movement of potassium from blood plasma to intracellular fluids, thus correcting the hyperkalemia seen in diarrheic calves."

Biolyte can be given orally, subcutaneously or intravenously. If the calf's condition requires it, all three routes of administration may be used concurrently to deliver the formulation.

"Fluid and electrolyte losses in diarrheic calves must be assessed in each individual animal," emphasizes Dr. Swenson. "Biolyte can safely and effectively correct mild, moderate or severe

dehydration and electrolyte deficits."

Regardless of the method of administration, Dr. Swenson points out that Biolyte is the only source of nutrition that the calf needs during the first 48 hours of administration. Biolyte can provide 80 percent of the animal's energy requirements, so supplemental feeding is unnecessary.

"Biolyte is part of a new generation of electrolytes," summarizes Dr. Swenson. "It

provides safe, beneficial nutritional support for correcting dehydration and electrolyte imbalances in diarrheic calves. Administering Biolyte will eliminate the clinical signs of hyperkalemia, hemoconcentration, acidosis and hypoglycemia — enabling the dehydrated calf to recover and begin functioning normally again." For more information, write: Biolyte, The Upjohn Company, P.O. Box 5087, Kalamazoo, MI 49001.

## Dietary guidelines supported

WASHINGTON, D.C. — Representatives of the meat industry recently registered their support for the philosophy expressed in the dietary guidelines under review by a U.S. Department of Agriculture (USDA) advisory committee.

In a joint letter to Dr. Bernard Schweigert, Chairman of the USDA committee, the National Pork Producers Council, the American Meat Institute, the National Cattlemen's Association, and the National Live Stock and Meat Board said the guidelines "reassure consumers that variety and moderation are the keys to healthy eating."

The groups pointed out that the guidelines "provide a continuing and central role for meat in the diet," and added that the meat industry originally expressed concern over the guidelines when they were interpreted as suggesting individuals should eat

less meat. "These guidelines, appropriately, contain no edict to eat or not to eat certain foods, but suggest a total, balanced approach to meal planning aimed at reducing excess consumption," stated the groups.

The letter also quoted former USDA official Dr. Gaurth Hansen of Utah State University, who recently said, "there should be no controversy over the appropriateness of meat consumption from either a scientific or public policy viewpoint. To achieve a balanced nutrient intake...significant amounts of meat must be included." Hansen served as Director of the Nutrition and Education Information Program in USDA's Science and Education Administration from 1980-82.

In closing, the meat industry's letter commended the government for its reasonable approach and attention to sound nutrition.

**"PA. AGRICULTURE - WE'RE GROWING BETTER"**

**ICE CREAM**

Use your own label

1/2 gallon & bulk

**ELIZABETHTOWN CREAMERY CO., INC.**

Rear 519 S. Market St.  
Elizabethtown, PA 17022

**717-367-1389**

Need...

**HAY - STRAW - EAR CORN  
PEANUT HULLS**

**Buy Now and Save!**

More and more farmers are buying from us for better value and all around satisfaction.

**DELIVERED - ANY QUANTITY**

Phone Area Code 717-687-7631

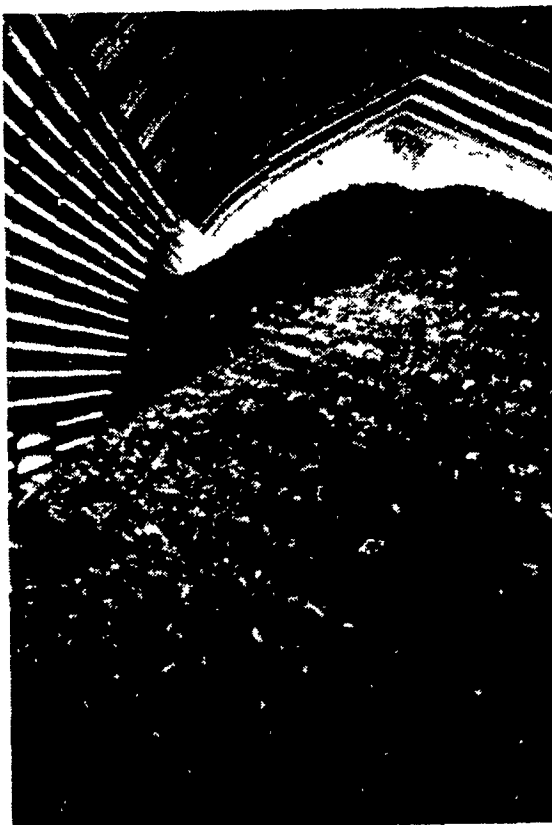
**ESBENSHADE TURKEY FARM  
PARADISE, PA.**



**36'x136' Corn & Implement Storage**  
A Unique Building For Ear Corn Storage. This Building Will Earn You Money.



**50'x100'x25'7" High Implement & Grain Storage.**  
Easy Load & Unloading of Grain.



**Naturally Air Dried Corn**  
Keeps Its Feeding Value.  
A Building That Is Practical & Versatile.

## Rigidply Rafters

**PRODUCTS WE MANUFACTURE AND STOCK**

- \* Laminated Arches
- \* Lumber
- \* Treated Timber
- \* Flooring & Decking
- \* Fabral Roofing Siding & Access.
- \* Cannon Ball Door Track
- \* Agri Type Doors, Windows & Vents.

**CALL US OR WRITE US FOR MORE INFORMATION & PRICES**  
RD 1 Richland, PA 17087  
**717-866-6581**

**COMPLETE FARM BUILDING MATERIALS**



WOOD ROOF TRUSSES

**Trusses Built From Quality Lumber**  
Crane Service  
Our 25th Year of Quality Products & Service