

Livestock market and auction news

Carlisle Auction

Carlisle, Pa.
Tuesday, July 26

Report supplied by auction

CATTLE: Steers were 1.00 lower; Heifers were 2.00 higher; Cows were 1.00 lower and Bulls were 2.50 higher. Steers- No Choice offered; Good 54.25-56.75; Standard 54.00 down. Heifers- Good 54.25-57.25; Standard 48.75-52.25; Utility 45.00 down. Cows- Utility & Commercial 40.00-43.50; Cutter 38.00-41.00; Canner & Low Cutter 36.75-39.00; Shells 33.00 down. Fat Bulls- Choice 1290 lbs. 57.25; Good 1550-1640 lbs. 49.25-51.00; Medium 1280-1415 lbs. 47.00-48.25; Utility 945-1475 lbs. 39.25-40.50.

FEEDER CATTLE: Steers were uneven to 2.00 higher; Heifers were 2.00 lower and Bulls were steady. Steers- Good 360-465 lbs. 57.00-60.00; Medium 430-495 lbs. 35.00-36.00; Medium 505-507 lbs. 46.00-46.50. Heifers- Good 345 lbs. 55.00; Medium 380-445 lbs. 40.00-41.00; Medium 625-720 lbs. 42.25-44.50. Bulls- Good 400-420 lbs. 53.00-54.00; Good 355-382 lbs. 50.00-55.00; Choice 460 lbs. 60.00.

CALVES: Vealers were 3.00

lower and back to the farm calves were 4.00 lower for Hol. Bulls. Vealers- Large run; Choice 75.00-81.00; Good 60.00-75.00; Standard and Good 55.00-70.00; Standard and Light 52.00 down. Farm Calves- Hol. Bulls 70.00-80.00.

HOGS: Steady prices to .50 lower; US No. 1-2, 46.50-48.10; US No. 1-3, 43.25-46.00; US no. 2-3 39.00-40.00. Sows- US No. 1-3, 30.00-33.00-39.50; No. 2-3, 29.00-31.50. Boars- 1.50 higher; heavy 27.00-30.00.

FEEDER PIGS: 3.00 lower; US No. 1-3, 23-25 lbs. 18.00-19.00 head; 40-47 lbs. 22.00-24.00 head; 50-57 lbs. 21.00-22.00 head.

SHEEP: Lambs- Medium-Good 39.00-44.00. Goats- 20.00-37.00 head.

Next Special Feeder Pig Sale Friday, August 12th 1:30 PM.

Keister's Livestock

Middleburg, Pa.
Tuesday, July 26

Report supplied by PDA

CATTLE 422. Compared with last Tuesday's market, slaughter steers grading Choice \$3 lower, Standard and Good \$1-\$2 lower. Slaughter cows \$1-\$3.25 lower. High Choice & Prime slaughter

steers 62.00-63.75, Choice 2-4 950-1400 lbs. 59.00-62.35, Good 54.50-59.00, few holsteins 51.75-54.25; Standard 49.25-53.00, few Utility 43.00-47.00. Couple Choice slaughter heifers at 59.75, few Good 52.75-54.75, few Standard 45.00-50.10. Utility & Commercial 1-3 slaughter cows 39.25-43.50, couple 45.25, Cutters 37.75-41.50, Canner & Low Cutters 35.00-37.75, Shells down to 33.10. Few Good slaughter bullocks 52.00-53.00. Yield Grade #1 950-1900 lbs. slaughter bulls 48.75-54.75, couple 57.50. Few Medium & Large Frame #1 425-650 lbs. feeder bulls 52.00-57.00.

CALVES 165. Couple Prime vealers 71.00 & 75.00, Choice 64.00-75.00, Good 58.00-68.00, Standard and Good 70-105 lbs. 43.00-50.00, Utility 60-85 lbs. 30.00-44.00. Farm Calves: Holstein Bulls 90-130 lbs. 60.00-85.00; Holstein Heifers 85-120 lbs. 53.00-64.50.

HOGS 500. (Mon. 7-25-83) Barrows and gilts about steady. US No. 1 1-2 210-235 lbs. barrows and gilts 47.75-48.60, few 49.85, No. 1-3 2-250 lbs. 47.25-47.75, No. 2-3 190-270 lbs. 44.00-47.25. US No. 1-3 300-600 lbs. sows 32.50-37.00.

HOGS 46. (Tues. 7-26-83). No prices quoted. Boars 25.00-28.50.

FEEDER PIGS 330. US No. 1-3 20-35 lbs. feeder pigs 17.50-25.00 per head, No. 1-3 35-50 lbs. 25.00-28.50, No. 1-3 70-85 lbs. 35.00-36.00 per head.

SHEEP 24. Choice 80-100 lbs. spring slaughter lambs 48.00-51.50, Good 50-70 lbs. 43.00-48.00. Few Slaughter ewes 12.00-26.00.

New Wilmington Livestock

New Wilmington, Pa.
Monday, July 25

Report supplied by PDA

CATTLE 183. Compared with last Monday's market, slaughter cows mostly \$2 lower. One Choice slaughter steer at 61.00, few Good 55.00-58.00, Standard 48.00-55.00. One Good slaughter heifer at 54.00, few Standard 45.50-49.50. Utility & Commercial slaughter cows 40.50-43.75, one at 46.75, Cutters 38.00-41.25, Canner & Low Cutter 31.00. Few Standard slaughter bullocks 47.00-48.00, few Utility 42.00-47.00. Yield Grade #1 1150-2010 lbs. slaughter bulls 49.50-52.50. Few Medium & Large Frame #1 360-650 lbs. feeder steers 45.00-52.75; Medium & Large frame #1 410-655 lbs. feeder heifers 40.00-48.50.

CALVES 246. Vealers grading Good & Choice mostly \$5 lower, Standard steady. Choice vealers 70.00-80.00, Good 60.00-70.00, Standard & Good 90-125 lbs. 40.00-54.00, 65-85 lbs. 35.00-45.00, Utility 50-85 lbs. 15.00-33.00. Farm calves, holstein bulls 95-130 lbs. 55.00-65.00; holstein heifers 85-115 lbs. 45.00-65.00.

HOGS 353. Barrows & gilts 50 cents to \$1 higher. US No. 1-2 205-245 lbs. barrows & gilts 46.00-46.75, No. 1-3 200-250 lbs. 45.00-46.00, No. 2-3 205-265 lbs. 43.50-45.00. Sows steady to strong. US No. 1-3 300-645 lbs. sows 30.00-37.00. Boars 27.00-33.50.

FEEDER PIGS 101. US No. 1-3 10-25 lbs. feeder pigs 10.00-18.00 per

head, No. 1-3 30-45 lbs. 23.00-31.00 per head.

SHEEP 182. High Choice & Prime 65-95 lbs. spring slaughter lambs 40.00-50.00, few 56.00-67.00, Choice 65-95 lbs. 32.00-45.00, Good 50-80 lbs. 28.00-43.00. Slaughter ewes 8.00-17.00.

Greencastle Livestock

Greencastle, Pa.
Monday, July 25

Report supplied by auction

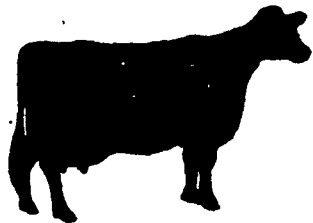
CATTLE: Butcher Steers-Choice 61.00-64.00; Medium - Good 50.50-61.50. Butcher Heifers-Choice 57.00-60.00; Medium - Good 46.50-58.00. Butcher Cows- Utility - Good 40.00-44.00; Canners and Cutters 37.00-42.50; Shells down to 33.00. Butcher Bulls- Medium - Good 51.50-57.00. Stock Steers- Medium up to 55.00. Stock Heifers- Medium up to 48.00.

CALVES: Medium-Good Calves- 160-220 lbs. 55.00-71.00; 125-160 lbs. 50.00-65.00; 100-120 lbs. 45.00-60.00; 80-100 lbs. 40.00-55.00. Holstein Bull Calves- up to 80.00. Holstein Heifer Calves- up to 68.00. Light and Green Calves- down to 20.00.

SHEEP AND LAMBS: Light and Cull Lambs- 38.00-43.50.

HOGS: Good-Choice Butcher Hogs- 190-225 lbs. 42.00-46.50; 225-250 lbs. 46.00-46.50. Good-Choice Butcher Sows- 400 lbs., down up to 32.00; 400 lbs., up up to 31.00. Heavy Boars- up to 27.50. Pigs- per head 11.00-23.00.

Pennfield #513



16%
DAIRY
PELLETS

\$159⁶⁵ NET/TON

(Includes Cash & Volume Discount)



CALL TOLL FREE

PA: 1-800-732-0467

MD: 1-800-233-0202

LOUIS LYONS & SON

Consign your cattle and hogs, feeder pigs & calves to Louis Lyons & Son. They offer choice service, excellent sorting & marketing of your livestock.

Charles Diller, Manager
Phone 394-7915
Burnell Siegrist - Buyer & Seller
Phone 626-8653

Experienced
Personnel

Immediate
Weighing

KING'S AUCTION, KIRKWOOD

Hay, Straw and Grain Auction Every

1ST AND 3RD TUESDAY OF THE MONTH

12:00

Located Rt. 472 5 miles south of Quarryville or 6 miles north of Oxford at Shaub's Auction House.

No out of state checks accepted without bank approval
ALL TRUCKERS AND FARMERS WELCOME

For quotations of next week's prices
call collect 215-488-7617

PA WATTS NUMBER
800-342-2249

LESS LABOR

VERY
SANITARY



LESS DOA'S

LESS COND.

Buyers of Leghorn Fowl

SECHLER'S POULTRY, INC.

Box G, Strausstown, PA 19559

SCOTT SECHLER

RICHARD SECHLER

NELSON LEGG

BEEFALO FOR SALE

-Semen in stock
-1/2, 3/4, 7/8 animals

BEEFALO
N & J

4270
Quakerbridge Rd.
Princeton, NJ 08540
609-896-0336

CATTLE HAULING

* Straight
Truck and
* Tractor
Trailer
Available
Call
717-665-7953