

Lebanon 4-H'ers Win Awards

CARLISLE — Lebanon County 4-H'ers took top awards at Regional 4-H Night held July 14 at Carlisle. The Capital Region includes Lebanon and seven surrounding counties.

Ann Grumbine, Avon-East Lebanon, and Damian Shner, Myerstown 4-H Raiders, each received gold outstanding performance ribbons for their senior demonstrations. Ann competed in the home management category while Damian earned his award in the engineering category. Troy Funk, Norsolebco, received a blue ribbon for his camera demonstration.

Public speakers Larissa Smith and Dan Shner, both of the Myerstown 4-H Raiders, earned blue ribbons for their 4-H speeches.

Receiving blue ribbon honors in their junior demonstration categories were: Carolyn Rabold, Spur and Bit, horse science; Beckie Grumbine, Avon-East, plant science; and Eric Funk and Jeff Wagner, (team) both of Norsolebco, wood science.

Foodarama judging contestants Natalie Wagner, Norsolebco, and

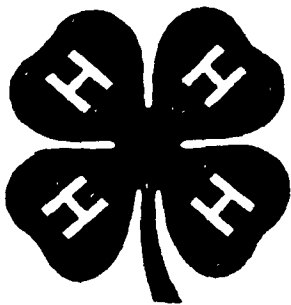
Deb Bolles, Mt. Zion, placed first and second overall in their contest. The Horse Bowl Team comprised

of Rob Shudel and Jennifer Hartman, the Saddle Slappers, and Carla Ditzler, Equestrians, placed

second in the region.

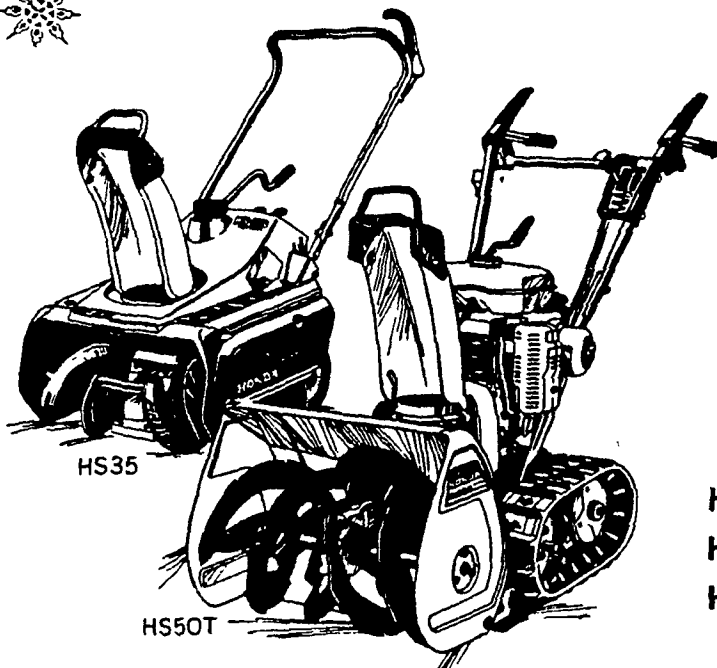
Regional Night is the regional step of 4-H competition in

preparing youth for the State 4-H Achievement Days to be held at Penn State in early August.



THINK SNOW, THINK HONDA

SAVE ON THESE OFF SEASON PRICES
10% DOWN AND PAY THE BALANCE NOVEMBER 1ST



Honda's snowthrower and snowblowers can really get you out from under. Our single-stage snowthrower has an exclusive auger paddle system that's semi self-propelled and strong enough to break through hard snow.

And our new, 2-stage 5 HP heavy duty snowblower features a choice of wheels or tracks for greater snow-gripping ability than most conventional models.

MODELS AVAILABLE

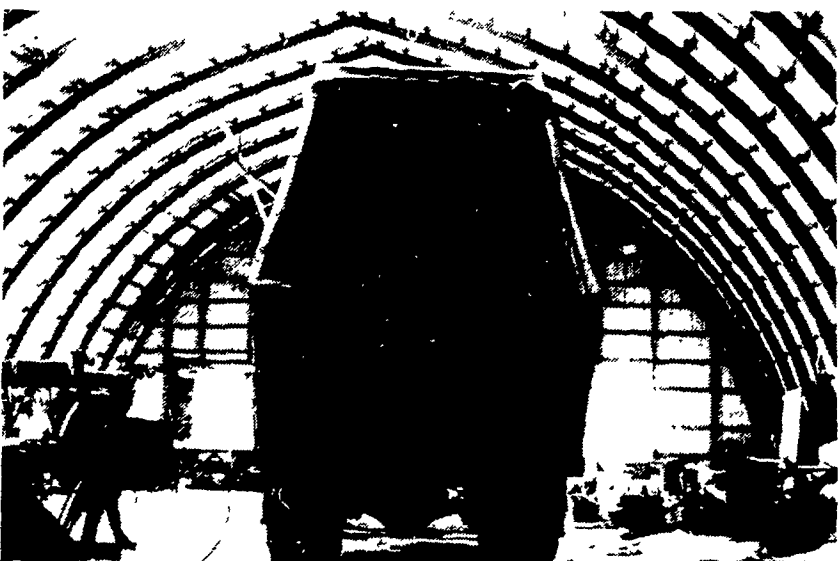
	LIST	SALE
HS-35	\$446	*396
HS-50W	\$934	*794
HS-50T	\$1,011	*897

Monday, Thursday, Friday
'til 9:30
Tuesday, Wednesday, Saturday 'til 6:00
Phone 717-665-2407

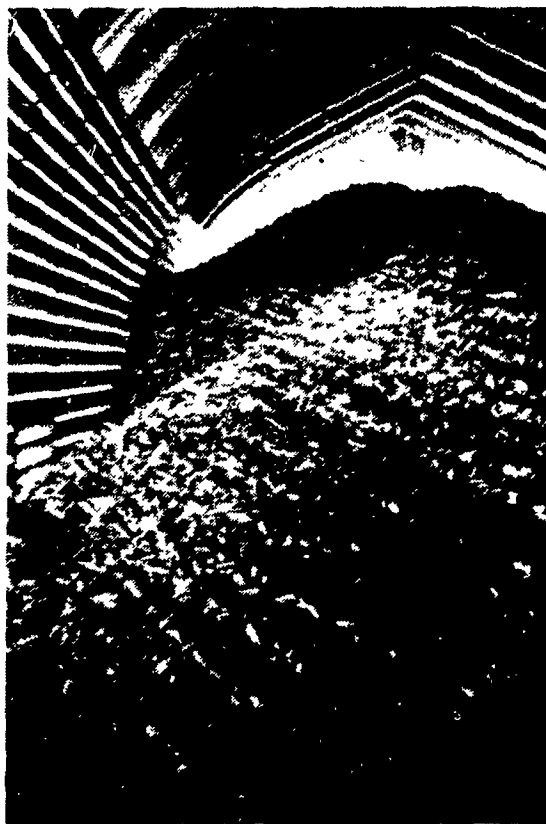
Bombergers
Elm, PA



36'x136' Corn & Implement Storage
A Unique Building For Ear Corn Storage. This Building Will Earn You Money.



50'x100'x25'7" High Implement & Grain Storage.
Easy Load & Unloading of Grain.



Naturally Air Dired Corn
Keeps Its Feeding Value.
A Building That Is Practical
& Versatile.



Trusses Built From Quality Lumber
Crane Service
Our 25th Year of Quality Products & Service

Rigidply Rafters

PRODUCTS
WE MANUFACTURE
AND STOCK

- * Laminated Arches
- * Lumber
- * Treated Timber
- * Flooring & Decking
- * Fabral Roofing
- Siding & Access.
- * Cannon Ball
- Door Track
- * Agri Type Doors,
Windows & Vents.

CALL US OR WRITE US
FOR MORE
INFORMATION & PRICES
RD 1 Richland, PA 17087
717-866-6581

COMPLETE FARM
BUILDING MATERIALS