



HAY MARKETS

New Holland Hay

New Holland Sales Stables
Monday, July 25

Report supplied by auction
93 loads; market steady on hay and straw, 5.00 lower on corn.
Alfalfa choice second cutting 101.00-120.00, few first cutting 68.00-80.00; Mixed few Choice 100.00-118.00; mostly 70.00-90.00; Timothy 65.00-90.00; one Timothy & Alfalfa 121.00; one grass 60.00; Clover 78.00 & 80.00; Straw mostly 65.00-70.00, several to 76.00; Oats 1.90-2.15 bu.; Corn 108.00-115.00 ton.

Good's Hay

Leola, Pa.
Wednesday, July 27

Report supplied by auction
60 loads.
Mixed 72.00-120.00; Alfalfa 73.00-120.00; Straw 57.00-76.00; Clover 46.00-59.00; Corn 114.00-123.00; Timothy 97.00-126.00; Rye 3.10-4.10 bu.; one Hay & Straw 57.00.

Kiester's Hay

Middleburg, Pa.
Tuesday, July 26

Report supplied by auction
6 loads of hay Mixed 35.00-67.50; Straw 49.00-52.00; Oats 1.65 and 1.75 bu.; Corn 105.00-117.50.

Leinbach's Hay

Shippensburg, Pa.
Tuesday, July 26

Report supplied by auction
18 loads. Alfalfa 94.00-107.00, pickup load of fancy Alfalfa 230.00; Mixed 60.00-62.50; Timothy 63.00; Clover 55.00-56.00; Straw 49.00-59.00; Oats 2.30 bu.; nine bags of Rye 5.00 bag.

Regional Hay

Friday, July 22

Report supplied by PDA
(All hay No. 2 and better, prices paid by dealers at the farm and per ton).

Hay & Straw steady to \$5 higher; and Straw steady.
Alfalfa 75.00-100.00; Mixed hay 60.00-70.00; Timothy hay 50.00-65.00; Straw 40.00-60.00; Mulch 25.00-30.00.

Green Dragon Hay

Ephrata, Pa.
Friday, July 22

Report supplied by PDA
42 Loads Hay and 32 Loads Straw.
Alfalfa 69.00-111.00; Mixed hay 59.00-125.00, mostly 65.00-93.00; Timothy hay 77.00-88.00; Straw 60.00-74.00; Ear Corn, 13 loads 113.00-124.00, few down 86.00; Oats, one load 1.95 per bu.

Pa. Grain

Monday, July 25

Report supplied by PDA

Compared with last Monday's market for Southeastern, Central and South Central Pa. Corn and Wheat steady to 15 cents higher. Barley steady to fully 5 cents higher. Oats uneven, market not fully established, new crop on the market in most eastern areas. Ear Corn steady to \$5 higher.

Prices paid delivered to dealers dock - (All prices per bushel, except Ear Corn per ton.)

Southeastern Pa.

Corn No. 2-y range 3.45-3.80, average 3.66, New Crop 3.00-3.20; Wheat No. 2 range 3.35-3.68, average 3.50, Barley No. 2 range 1.80-2.15, average 2.03; Oats No. 2 range 1.60-1.86; average 1.73; Soybeans No. 1 range 6.66-6.85, average 6.76, New Crop 6.80-7.01; Grain Sorghum #2 range 2.90, average 2.90; Rye range 2.75-2.90, average 2.83; Ear Corn range 95.00-105.00, average 99.82.

Central Pa.

Corn No. 2-y range 3.40-3.70, average 3.56; Wheat No. 2 range 3.20-3.55, average 3.36; Barley No. 3 range 1.90-2.10, average 2.01; Oats No. 2 range 1.50-1.85, average 1.60; Soybeans No. 1 range 6.30, average 6.30; Rye range 2.75-3.00, average 2.88; Ear Corn range 90.00-98.50, average 94.71.

South Central Pa.

Corn No. 2-y range 3.50-3.55, few reported 3.80, average 3.55; Wheat No. 2 range 3.20-3.40, average 3.28; Barley No. 3 range 1.80-2.00, average 1.92; Oats No. 2 range 1.50-1.70, average 1.64; Ear Corn range 90.00-105.00, average 98.45.

Southeastern, Central & South Central Summary

Corn No. 2-y range 3.45-3.80, average 3.61; Wheat No. 2 range 3.20-3.58, average 3.40; Barley No. 3 range 1.80-2.15, average 1.94;

Oats No. 2 range 1.50-1.85, average 1.65; Ear Corn range 90.00-105.00, average 97.63.

Western Pa.

Corn No. 2-y range 3.40-3.60, few reported 3.20, average 3.44; Wheat No. 2 range 2.90-3.30, 3.08; Barley No. 3 range 1.95-2.00, average 1.97; Oats No. 2 range 1.60-1.75, average 1.66; Ear Corn range 80.00-94.00, average 86.33.

Oklahoma Cattle

Wednesday, July 27

Report supplied by USDA

Estimated Receipts 10,500
Same Day last Week 11,673

Trade active. Demand Good, especially on Steers. Feeder Steers steady to firm. Feeder Heifers steady to 1.00 lower. Majority receipts Medium Frame 1 and Mixed 1-2 500-850 lb. Feeder Steers and 400-750 lbs. Feeder Heifers. Moderate attendance of buyers.

FEEDER STEERS: Medium and Large Frame 1 475-480 lb. 65.25-66.70; 500-600 lb. 62.50-64.70; 600-700 lb. 59.25-62.00; 700-800 lb. 58.70-61.30; 800-900 lb. 58.00-60.50. Medium and Large Frame Mixed 1-2 400-500 lb. 61.80-65.00; 400-500 lb. 58.70-61.50; 600-700 lb. 59.00-59.60; 700-800 lb. 56.90-59.00. Large Frame 2 Holsteins: 765-1065 lb. 40.80-44.00.

FEEDER HEIFERS: Medium and Large Frame 1 400-500 lb. 55.00-58.90; 500-600 lb. 54.25-56.90; 600-700 lb. 53.50-56.20; 700-800 lb. 54.00-55.20. Small Frame 1 500-650 lb. 50.00-53.10. Medium and Large Frame Mixed 1-2 350-500 lb. 51.00-55.25; 500-600 lb. 53.75-54.90; 600-700 lb. 51.00-54.00; 700-750 lb. 51.00-53.60. Medium and Large Frame 2 400-750 lb. 46.70-49.80.

Thursday, July 28

Report supplied by USDA
Weekly cattle summary.
Compared to last Wednesday Feeder Steers were steady to 1.00

higher; Feeder Heifers steady to 50 cents higher. Slaughter Cows closed generally steady with late sales Utility and Commercial 2-3 38.50-41.00, few lots high dressing 41.40-43.00; Cutters 1-2 37.00-39.30, package high dressing 40.10; Canners and low Cutters 33.75-36.25. Slaughter Bulls were 1.00-2.00 lower with Yield Grade 1 1100-1500 lbs. 45.50-50.75; 1500-1800 lbs. 47.00-51.00, individual Monday 2025 lb. high Dressing 54.00. Salable receipts this week near 18,900 head compared with 17,878 head last week and 19,516 head last year. The majority of receipts consisted of Feeder Steers and Heifers; Cows and Bulls made up 11 percent of salable supply.

Penns Valley Livestock

Centre Hall, Pa.
Tuesday, July 26

Report supplied by auction
Beef Cows: Utility and Commercial 41.25-44.75; Cutters 37.75-40.85; Canners 35.25-37.25; Shells 27.00.

Steers: Good 51.00-54.50; Standard 48.50-50.25.

Bulls: Good 51.50-55.00; Standard 46.85-50.50.

Feeder Cattle: 300-500 lbs. large frame 59.50-67.00; 300-500 lbs. small frame 36.50-50.50; 500-700 lbs. large frame 45.00-52.00.

Veal Calves: Choice 70.00-77.50; Good 62.00-69.00; Standard 55.00-61.00; Utility 43.50-53.00.

Farm Calves: Bulls 60.00-77.00; Heifers 65.00-72.00.

Hogs: 45.50-47.50.

Sows: 26.75-31.50.

Boars: 25.00-26.25.

Shoats: 25-30 lbs. per head 16.00-25.00; 30-35 lbs. per head 26.00-32.00.

Lambs: 40.50-48.00.

NEW HOLLAND SALES STABLES, INC. - THE ACTION AUCTION

MONDAY



FAT HOGS
FARLY BIRD HOG SALE
For Your Protection Your Hogs Must Be Identified

10:00 AM



HORSES MULES

11:00 AM



HAY STRAW GRAIN

1:30 PM

BEEF SALE CALF, SHEEP, GOATS



WEDNESDAY

12:00 NOON



HEIFERS, BULLS

NEW HOLLAND SALES STABLES, Inc.

12 Miles East of Lancaster on Route 23, New Holland, Penna

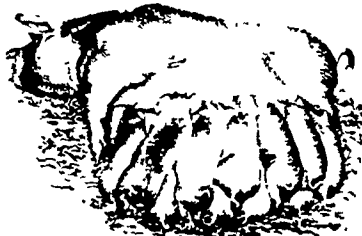
The Action Auction 717-354-4341

Mgr. - Abe Diffenbach - 717-393-4464
Norman Kolb - 717-397-5538

Field Representatives
Alan Diffenbach 717-656-9806
Luke Eberly 215-267-6608 - 738-1865

WEDNESDAY

FEEDER PIG SALE 1:30 P.M.



We endeavor to keep our barns cleaner than yours. State graded until 12 Noon

THURSDAY

11:00 AM



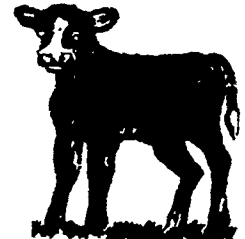
BULLS -



STEERS - BEEF COWS

3:30 P.M.

CALVES



SHEEP GOATS

**Market your livestock thru New Holland Sales, your neighbor does
Pick-up your check before you leave**