

## Livestock market and auction news

### Indiana Auction

Homer City, PA.

Thursday, July 28

Report supplied by PDA

**CATTLE:** 94. Compared with last week's market: Sl. cows steady to weak. Sl. steers: (few) Choice 58.00-58.50; (few) Good

55.00-57.00; Standard 49.00-54.00; (few) Utility 48.00-50.00. Sl. heifers: (few) Standard 49.00-52.50. Sl. cows: Utility & Commercial 40.00-44.00, few to 45.75; Cutters 37.50-41.00; Canner & L. Cutter 33.00-38.00; Shells down to 26.00. Sl. bullocks: (few) Good

53.00-54.50. Sl. bulls: (few) Yield Grade No. 1, 1100-1600 lbs. 48.00-49.75; (few) Yield Grade No. 2, 800-1300 lbs. 46.00-48.25.

**FEEDER CATTLE:** Steers, Medium Frame No. 1, 500-650 lbs. 55.00-57.25. Heifers, (few) Medium Frame No. 1, 600-700 lbs. 45.00-48.00.

**CALVES:** 160. Vealers grading Good & Choice mostly steady, Standard & Good 5.00 higher. Choice 66.00-86.50; Good 55.00-67.00; 90-120 lbs. 50.00-65.00; 60-85 lbs. 41.00-52.00.

**FARM CALVES:** Hol. Bulls 90-120 lbs. 65.00-89.00; Hol. Heifers 90-120 lbs. 75.00-108.00.

**HOGS:** 138. Barrows and gilts .50-1.00 lower. US No. 1-2 46.25-47.50; (few) No. 1-3 200-245 lbs. 46.00-46.40; one lot No. 2-3 255 lbs. at 44.00; (few) No. 1-3 160-170 lbs. 42.00-43.25; Sows US No. 1-3 350-500 lbs. 31.00-32.50. Boars 26.25-30.00.

**FEEDER PIGS** 37.00. US No. 1-3 20-25 lbs. 14.00-16.00; one lot No. 1-3 40 lbs. at 25.00 per head.

**SHEEP:** 70. Spring lambs 3.00-4.00 lower. Choice 80-95 lbs. 49.00-52.00; Good 75-85 lbs. 45.00-48.00; Good 60-70 lb. feeders 40.00-44.00. Sl. ewes: 9.00-16.00.

**GOATS:** 10. 11.00-20.00 per head.

## New council member selected

**UNIVERSITY PARK** — John Stewart, Collegeville, has been selected as one of 24 council members of the 1984 Pennsylvania 4-H Leadership Congress. The selection was made at the end of this year's Congress held on Penn State's University Park campus. He will work specifically with the Story Tellers program.

As part of his responsibility, he will be returning to Penn State in early August to evaluate this year's Congress and to do initial planning for 1984.

Leadership Congress provides 4-H'ers with the opportunity to develop leadership skills and to discuss current youth concerns while having fun, making new friends and seeing Penn State. In the Story Tellers program, 4-H members sharpen their communication skills by telling the 4-H story in one of four areas: Radio, Photo, Newswriting, and the production of Teen Leader Beat, the annual newsletter of Leadership Congress.

## THE AERODRY™ COMPUTERIZED GRAIN MANAGEMENT SYSTEM...

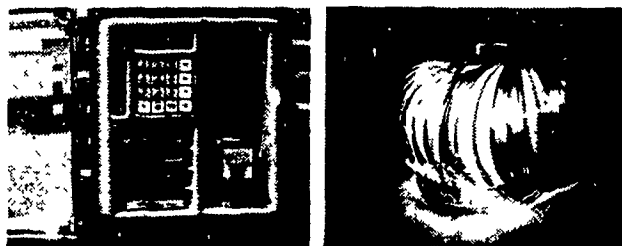
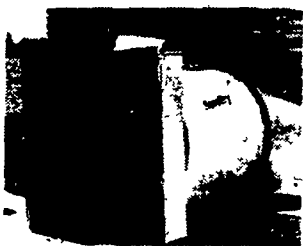


### Grain drying with a difference

Dozens of grain growers throughout the area have discovered the AeroDry difference over conventional heat drying systems. They're making more money from their drying operation for four key reasons:

#### Tremendous Energy Savings

The AeroDry System uses a unique fan and bin floor set-up to dry grain. It's computer controlled for maximum efficiency. Since no gas is used, no heat of any kind, energy costs are 25% of conventional heat dryers.



#### Reduced Shrink Loss

No heat means less damage in drying the grain. You get heavier corn with over 50% less shrinkage than heat drying, that means more grain in your bin.

#### Better Grain Quality

With AeroDry drying, grain isn't cracked or damaged by heat. More natural starches, sugars and other nutrients are retained for better feed quality and higher test weights.

#### Tax Benefits

AeroDry Systems qualify for up to a 15% energy credit in the form of an investment tax credit. Added to the 10% grain storage investment credit, that's a total credit of 25%.

The AeroDry System can be installed in any new or existing bin up to 16 feet high. If you're drying grain, or selling to the elevator, you can't afford not to see an AeroDry System. Please call or mail in the coupon and we'll send information and arrange a demonstration. Put the AeroDry difference to work for you.

Yes, I'd like to learn more about the AeroDry difference

Please call me immediately to set up a demonstration

NAME \_\_\_\_\_

ADDRESS \_\_\_\_\_

CITY/TOWN \_\_\_\_\_

STATE \_\_\_\_\_ ZIP \_\_\_\_\_

PHONE \_\_\_\_\_

LF72983



Distributed exclusively by:  
**ADVANCED AG SYSTEMS INC.**  
 RD #2 Box 159 Elverson, PA 19520  
 215-286-0301

## PA. RETAIL PRODUCE



### Fruit & Vegetable Hotline

Thursday, July 28

Report supplied by PDA

**LODI APPLES:** 1.20 1/4 peck; 2.50 1/2 peck; 3.40 peck; 5.00 1/2 bushel.

**APRICOTS:** .85 lb.

**YELLOW BEANS:** .70 lb.

**GREEN BEANS:** .75 lb.; .89 qt. 12.50 bushel; .25 lb. PYO.

**ITALIAN BEANS:** .75 lb.

**BLUEBERRIES:** 1.10 pt.; 1.85 qt.

**RED RASPBERRIES:** 1.79 pt.

**BLACKBERRIES:** 1.00 pt.

**BROCCOLI:** .75 bunch.

**RED BEETS:** .50 bunch.

**CABBAGE:** .19 lb.; .59 head.

**SWEET CORN:** 1.50-2.50 doz; averaging 2.00 doz.

**CUCUMBERS:** 4/1.00.

**CAULIFLOWER:** .79-1.49 according to size averaging 1.15 head.

**CIDER:** 2.50 gal.

**CARROTS:** 1.75 qt.; .39 bunch.

**SWEET CHERRIES:** .95 pt.; 1.50 qt.; 1.59 lb.

**TART CHERRIES:** 1.50 qt.

**HONEY:** 1.75 lb.

**LETTUCE:** .55 head.

**MUSHROOMS:** 1.35 12 oz.

**NECTARINES:** .65 lb.

**GREEN ONIONS:** .35 bunch.

**SWEET ONIONS:** .35 bunch.

**COOKING ONIONS:** .39 bunch.

**PARSLEY:** .29 lb.

**PEACHES:** .59 lb.; 1.30 qt.; 1.59 1/4 peck; 2.85 1/2 peck.

**SHELL PEAS:** .50 lb.

**SUGAR PEAS:** .85 lb.

**POTATOES:** .25 lb.

**PEPPERS:** 5/1.00.

**HOT PEPPERS:** .05 each.

**RADISHES:** .30 bunch.

**PLUMS:** 1.10 qt.; .69 pt.; .73 lb.

**RHUBARB:** .50 bunch.

**FUCCHINI SQUASH:** .39 lb.

**TOMATOES:** .59-.99 lb. according to size averaging .85 lb.

**HYDROPONIC TOMATOES:** .99 lb.

**WATERMELON:** 2.25 each.

**KOHLRABI:** .15 each.

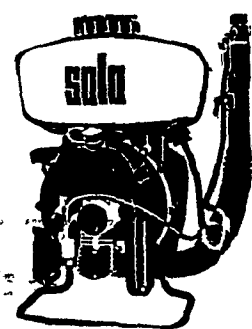
**DILL:** .25 each.

**TURNIPS:** .89 lb.

**SWISS CHARD:** .79 lb.

## SOLO MISTBLOWERS & SPRAYERS

Are Ideal For Spraying Crops, Orchards, Vineyards and Tobacco.



### 3 HP & 5 HP Models Available

- ★ Spraying distance up to 35 ft.
- ★ Adaptable for dust, liquid, granuals

LANCASTER COUNTY'S ONLY DEALER SPECIALIZING IN SPRAYER SALES & SERVICE

### LESTER A. SINGER

Ronks, PA Ph: (717) 687-6712  
 Hours: Monday thru Friday 8-5; Sat. 9 to 12  
 Dealer Inquiries Invited

## Attention Beef & Pork Raisers CUSTOM BUTCHERING

### HESS' BUTCHER SHOP



2635 Willow Street Pike Willow Street, PA

717-464-3374

- We Process the Old Fashioned Way —
- Pudding • Hams • Bologna
  - Scrapple • Bacons • Dry Beef

We also Specialize in Beef For Your Freezer, Sides of Pork, Sides of Beef.

Freezer Lockers Now Available