

## McDonald's finally gets with it McDonald's real wholesome goodness!

These McDonald's dairy products have been approved for the "REAL" Seal by the American Dairy Association.

The "REAL" Seal is part of a nationwide program to help consumers quickly identify genuine dairy products. A.D.A. is the first fast-service restaurant to use the "REAL" Seal for a wide variety of its dairy foods.

The "REAL" Seal is used on all McDonald's milk, soft-serve ice cream and sundaes, shakes, cheese and butter in all "REAL" wholesome dairy products.

No don't's, title

for artificial dairy items. Come to McDonald's—where you'll always find the "REAL" Seal and genuine, delicious dairy foods.



## Now is the Time

(Continued from Page A10)

well fertilized this summer. An application of 20 to 30 pounds of actual nitrogen per acre over the plants during July or August should give strength to new runners and increase fruit yields. This application should be made when the plants are dry in order to avoid burning the leaves. Ammonium nitrate is one of the good nitrogen fertilizers to use. In the home garden use about one-fourth pound of ammonium nitrate per 100 square feet of bed space. Good care of the strawberry plants this summer will bring about better yields next June.

### To Beware of Lightning Danger

Summer temperatures often bring severe thunder and lightning storms; we've had some in recent weeks, and no doubt there will be more to come. We urge parents to warn their youngsters of the danger of seeking shelter under a tree or swimming in a pond or creek before and during a storm. Safety in a truck, car or a building should be encouraged as the storm approaches as well as during the storm. Stay away from electric fences and farm equipment that is out in the open.

Buildings with lightning rods should be checked to be sure the rods are grounded in moist soil and free of debris that would prevent the cable from taking the charge into the ground.

### To Reduce Feed Cost By Using Alternative Feed Grains

Swine producers may be able to lower their feed cost by utilizing alternative feed grains. Using a value of \$3.50 per bushel for corn, the value of other grains to producers on a corn-supplement program are:

## Farm Calendar

(Continued from Page A10)

Young Farm Couples Conference, Sheraton Inn, State College, continues tomorrow.

4-H Fair, Farm Show Complex, Harrisburg, continues through Saturday.

Friday, Aug. 5  
Central Jersey Holstein

Show, Flemington Fairgrounds, 10 a.m.; Hunterdon 4-H Beef Show, 4 p.m.

Wheat Threshing steam and gas engine show, between Denton and Federalsburg, Md., continues through Sunday.

Eastern Arabian Horse

Show, Devon, continues tomorrow.

Saturday, Aug. 6  
Montgomery County 4-H Sheep Club Show, 4-H Center, in Lansdale, 9 a.m.

Clinton County Fair, Mill Hall, continues through next Saturday.

Greene County Fair, Waynesburg, continues through next Saturday.

	cents/lb.	bushel weight	\$/bushel
Barley	5.31	48	2.55
Oats	5.00	34	1.70
Wheats	6.25	60	3.75
Milo	6.25		

These values represent the upper economical limit to pay for these alternative grains. If these grains are available at a cheaper price then they should be substituted for corn, suggests Chester D. Hughes, Extension Livestock Agent.

Producers who use a corn-soybean meal-base mix feeding program can gain more value from these grains, since these producers can take advantage of the high protein levels of these grains. Similar values for this type of program would be:

	cents/lb.	bushel weight	\$/bushel
Barley	5.50	48	2.64
Oats	5.14	34	1.75
Wheat	6.34	60	3.80
Milo	6.21		

# 270 HEAD SELLING

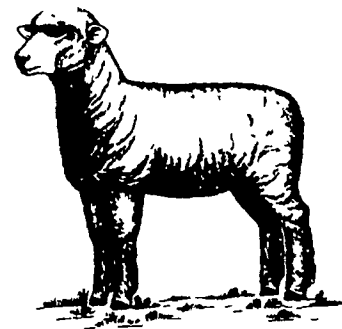
## COMPLETE DISPERSION STILLWATER FARMS

### COMMERCIAL EWE FLOCK

AUGUST 6th, 1983

ESSEX COUNTY FAIRGROUNDS  
WESTPORT, NEW YORK

12:00 NOON



## "AN EXCELLENT OPPORTUNITY TO PURCHASE YOUR REPLACEMENT EWES"

**EWE OFFERING:** 30 - CROSSBRED YEARLINGS  
10 - COMMERCIAL SUFFOLKS 3-5 YEAR OLDS  
20 - BLACK FACED CROSSBREDS - 3 YEAR OLDS  
100 - COMMERCIAL RAMBOULLETS - 4 YEAR OLDS  
40 - COMMERCIAL CORRIEDALES — 2-5 YEAR OLDS  
25 - WHITE FACED CROSSBREDS — 2-3 YEAR OLDS  
10 - COMMERCIAL POLLED DORSETS - 4 YEAR OLDS  
20 - COMMERCIAL HORNED DORSETS - 3-7 YEAR OLDS  
15 - BLACK SHEEP - CORRIEDALE BASE - 2-5 YEAR OLDS

**RAM OFFERING:** 3 - BLACK WOOLED RAMS  
2 - RAMBOULLET RAMS  
1 - SUFFOLK RAM

SOUND INVESTMENTS • HEALTHY • STRICTLY CULLED • SOUND



**KEN BRUBAKER**  
Box 149  
Westtown, PA 19395  
215/696-5483

WRITE OR CALL FOR CATALOGS  
MAIL OR PHONE ORDERS  
ACCEPTED

**STILLWATER FARMS**  
RFD 2, Box 40A  
Westport, NY 12993  
518/962-4713