

Livestock market and auction news

St. Louis Cattle

Thursday, July 21

Report Supplied By USDA

Receipts This Week 3,800;
Week Ago 3,900;
Year Ago 4,300

Compared to the previous week, slaughter steers generally steady. Slaughter heifers weak to .50 lower. Cows fully 3.00-4.00, instances 5.00 lower, most decline on boning utility. Bulls 2.00-3.00 lower. Slaughter supply mainly choice slaughter steers, around 30% heifers and 10% cows.

SLAUGHTER STEERS: Mixed choice and prime 2-4 1050-1275 lbs. 61.50-62.50, Load early 63.00, closing 61.50-62.00. Choice 2-4 975-1275 lbs. 60.50-62.00, closing sales 60.50-61.50. Mixed good and choice 2-4 900-1200 lbs. 58.50-61.00. Good 2-3 900-1150 lbs. 56.00-59.00. Standard to good 2-3 1050-1350 lb. holsteins 47.00-53.00. Few lots mixed good and choice 2-3 1175-1600 lbs. 53.00-54.50. Standard to good 2-3 1000-1300 lbs. 42.50-47.00.

SLAUGHTER HEIFERS: Mixed choice and prime 2-4 875-1100 lbs. 59.00-60.50, part load early 61.00, closing 59.00-59.50; 3-4 925-1100 lbs. 57.00-59.00. Choice 2-4 850-1050 lbs. 58.00-60.00, closing 58.00-59.00; 600-850 lbs. 56.00-58.50. Mixed good and choice 2-3 850-1000 lbs. 56.00-58.50. Good 2-3 750-950 lbs. 52.00-57.00.

COWS: (Closing Week Sales) Utility and commercial 2-4 38.00-38.00. Boning utility 1-2 38.00-39.00. High-yielding utility 1-2 39.00-40.00. Cutter 1-2 35.00-37.00. Canner and low cutter 1-2 32.00-35.00.

BULLS: YG 1-2 1100-1900 lbs. 45.00-54.00, closing 45.00-51.00. Few YG 1 1575-1775 lbs. Late 52.50 and 53.00.

Wednesday's weekly sheep auction. Receipts about 400 head. Compared last Wednesday, spring slaughter lambs steady to 2.00 lower. Not enough other classes on offer for an adequate test of prices.

SPRING SLAUGHTER LAMBS: Small lots and individual head prime 113-130 lbs. 53.00. Scattered lots choice and prime 100-113 lbs. 48.00-50.50; several lots 85-102 lbs. 43.00-48.00. Small lots choice 75-100 lbs. 38.00-43.00.

SLAUGHTER EWES: Few utility and good 8.00-10.00. Few aged bucks 5.00-5.50.

FEEDER LAMBS: Small lot choice and fancy 68 lbs. 45.00; scattered lots 69-71 lbs. 38.50-41.50. Few head choice 50-60 lbs. 35.00-36.00.

FEEDERS: (including around 800 at the regular Thursday auction.; Feeder Steers and Heifers 2.00-3.00 lower, instances 4.00-5.00 lower on Steers under 600 lbs. and Heifers under 500 lbs. Supply mainly Medium Frame 1 and Mixed 1-2 400-900 lbs. Steers and 325-700 lb. Heifers.

FEEDER STEERS: Medium Frame 1: 425-575 lbs. 59.00-61.25; Scattered lots 600-675 lbs. 57.50-59.50; several lots 850-950 lbs. 52.00-55.25, including fleshy 810 lbs. at 52.00. Medium Frame 1-2 and some small frame 1; 350-650 lbs. 51.00-

57.00, mostly 52.00-56.00. Large Frame 2 Holsteins: 325-725 lbs. 40.00-45.00.

FEEDER HEIFERS: Medium Frame 1: 325-700 lbs. 49.00-51.50. Medium Frame 1-2: few lots 425-475 lbs. 43.50-48.00.

COWS AND CALF PAIRS: Lot small frame 1-2 young 850 lb. Cows with Calves at side 430.00 per pair.

Weekly Summary

Friday, July 23

Report supplied by PDA

CATTLE: 7775. Compared with 7450 head last week, and 7224 head a year ago. Compared with last week's market: Slaughter steers 50-1.50 lower; Sl. heifers weak to 2.00 lower; Sl. cows 1.00-2.50 lower; Sl. bulls 50-2.00 lower. Sl. steers: High Choice & Prime 62.50-65.50; Choice 59.00-64.50; Good 55.00-60.00; Standard 49.00-55.00. Sl. heifers: Choice 57.50-61.85; Good 52.00-58.00; Standard 45.00-52.00. Sl. cows: Utility & Commercial 40.00-46.00; Cutters 38.00-43.00; Canner & L. Cutter 32.00-40.00; Shells down to 23.00. Sl. bullocks: few Good 51.25-58.00; few Standard 48.75-52.75. Sl. bulls: Yield grade No. 1, 1200-2200 lbs. 49.50-57.00;

Yield Grade No. 2, 900-1400 lbs. 44.25-52.00.

FEEDER CATTLE: Steers, Medium & Large Frame No. 1, 300-600 lbs. 54.00-64.00.

CALVES: 4525. Compared with 4569 head last week and 4404 head a year ago. Vealers 2.00-5.00 lower. Few Prime 90.00-140.00; Choice 73.00-90.00; Good 55.00-75.00; 90-110 lbs. 45.00-57.00; 70-90 lbs. 35.00-50.00; Utility 50-100 lbs. 25.00-45.00.

FARM CALVES: Hol. Bulls 90-130 lbs. 55.00-95.00; Hol. Heifers 90-135 lbs. 50.00-65.00.

HOGS: 6992. Compared with 7371 head last week and 6005 head a year ago. Barrows and gilts .25-.75 lower. US No. 1-2 210-240 lbs. 46.00-49.00. No. 1-3 200-250 lbs. 45.50-47.50; No. 2-3 240-280 lbs. 40.00-45.50; few No. 1-3 160-190 lbs. 41.00-45.00; Sows steady. US No. 1-3 300-600 lbs. 30.00-35.50. Boars 27.00-33.00.

FEEDER PIGS: 1491. Compared with 1556 head last week and 1445 a year ago. Steady to weak. US No. 1-3 25-35 lbs. 16.00-26.00 per head; No. 1-3 35-50 lbs. 20.00-32.00; few No. 1-3 50-65 lbs. 30.00-43.00.

3 GRADED FEEDER PIG SALES: 2921. Compared with 2158 head last week, and 5074 head a year ago. All sales by CWT. Feeder Pigs highly uneven, extremes 10.00 higher to 9.00 lower. US No. 1-2 25-40 lbs. 53.00-73.00, 40-50 lbs. 52.00-65.00, few to 69.00, 50-60 lbs. 53.00-

61.00, 60-75 lbs. 48.00-63.00; US No. 2-3 20-40 lbs. 45.00-69.00, 40-65 lbs. 45.00-55.00.

SHEEP: 834. Compared with 1088 head last week and 955 head a year ago. Spring lambs steady to weak. Choice 70-115 lbs. 50.00-60.00, few to 65.00; Good 55-95 lbs. 40.00-55.00. Sl. ewes: 8.00-23.00.

Chambersburg Auction

Chambersburg, Pa.

Thursday, July 21

Report supplied by PDA

CATTLE: 306. Compared with last week's market: Slaughter steers grading Good 1.75-3.50 lower; Sl. cows 1.25-2.75 lower. Sl. steers: (few) Choice 1000-1250 lbs. 58.35-60.85; Good 52.50-57.00; (few) Standard 48.85-54.00; (few) Utility 47.00-47.75. Sl. heifers: (few) Good 48.50-55.75. Sl. cows: Utility & Commercial 39.00-43.25, few 45.60; Cutters 38.75-41.75; Canner & L. Cutter 36.00-39.00; Shells down to 32.00. Sl. bulls: (few) Yield Grade No. 1, 1320-1470 lbs. 52.00-58.75; (few) Yield Grade No. 2, 1145-2220 lbs. 47.00-48.25.

FEEDER CATTLE: Steers & Bulls, (few) Medium Frame No. 1, 450-875 lbs. 47.00-51.50.

CALVES: 670. (few) Prime 91.00-95.00; Choice 73.00-89.00; Good 57.00-70.00; 70-105 lbs. 46.00-55.00; Utility 50-90 lbs. 35.00-51.00.

FARM CALVES: Hol. Bulls 90-130 lbs. 53.00-65.00, few to 80.00; Hol. Heifers 80-300 lbs. 50.00-58.00.

Wickes Lumber

Garages

We offer a complete line of "panelized" garages! These convenient packages include prebuilt wall sections, preassembled trusses and siding, roofing, window, side door, garage door and hardware. Our friendly salespeople can offer you expert advice on the fastest, easiest way of assembling your garage. Stop today for your project plan!

EARLY BIRD SPECIAL

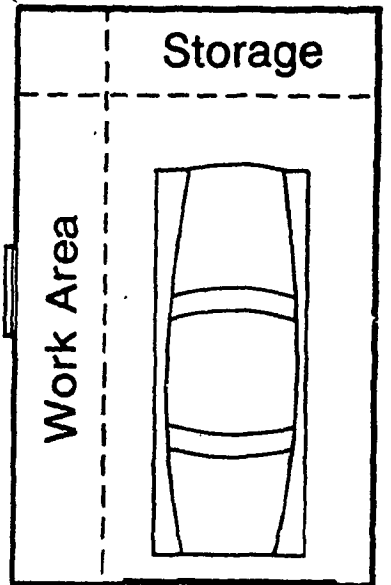
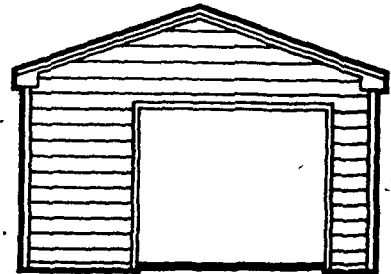
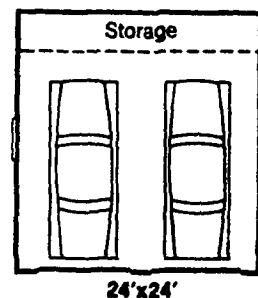
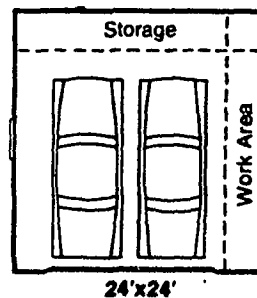
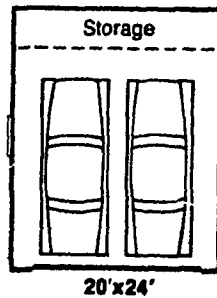
ALL GARAGE PACKAGES

Are Now **\$150⁰⁰** Off
their everyday regular price —

**OR A FREE STANLEY GARAGE
DOOR OPENER**

These garages must be ordered by August 15, 1983 and delivered by August 31, 1983.

OTHER SIZES AVAILABLE! We offer a variety of sizes to suit your individual needs, and these are just a few of the garage models available. From roomy to downright spacious - you'll find just what you're looking for. All plans, materials and step-by-step instructions included to help make your new garage a reality!



In the "NICC" of time

2.9%

Introducing N.I.C.C.

The New Idea Credit Corporation

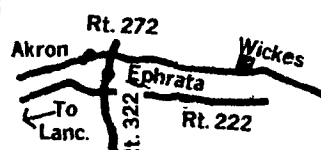
Where you can finance New Idea Farm Equipment using one of these five options:

0.0% until 1-1-84 or
2.9% for 1 year or
9.9% up to 2 years or
11.9% up to 3 years
or
BIG CASH REBATES

Ask your participating Dealer about NICC and this offer to purchase new equipment at special prices and low, low interest.

**AVCO
NEW IDEA**

You'll Like What's Happening At Wickes!



1 1/2 Miles N.E. of Ephrata on Route 272
STORE HOURS: Monday, Thursday and
Friday 8:00 to 8:00; Tuesday and
Wednesday 8:00 to 6:00;
Saturday 8:00 to 3:00
Phone 733-6521 or Lanc. 394-9325



**Wickes
Lumber**