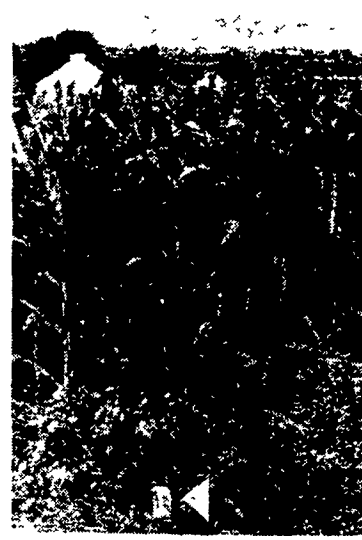


Does this look familiar to you?

*If scenes
like this
bother you,
express support
for SB 463
to your
state legislator.*



These are just a few scenes noticed along nearby rural roadsides. Some people throw away entire trash bags of bottles and cans. An entire pastoral panorama can be visually violated by a single can. It's been dry in the cornfields, but Mountain Dew is not the answer. Perhaps some of those TV commercials should be revised: Who's responsible? - The Pepsi generation? Living with gusto is OK, but not chopped up in alfalfa. And, weekends may be made for Michelob, but country roadsides are not.

