



# HAY MARKETS

## Regional Hay

Friday, July 8  
Report supplied by PDA  
(All hay No. 2 and better, prices paid by dealers at the farm and per ton).

Hay and straw steady to strong; second cutting Alfalfa now on the market in southern areas.

Alfalfa 70.00-90.00; Mixed hay 55.00-65.00; Timothy hay 45.00-65.00; Straw 40.00-55.00; Mulch 25.00-35.00.

## Green Dragon Hay

Ephrata, Pa.  
Friday, July 8  
Report supplied by PDA  
48 loads hay and 12 loads straw.  
Alfalfa, few 41.00-50.00, individual 94.00; Mixed hay 50.00-77.00, few down to 41.00; Timothy hay 40.00-61.00, few 70.00; Straw 57.00-84.00; Ear Corn, 12 loads 94.00-111.00.

## Leinbach's Hay

Shippensburg, Pa.  
Tuesday, July 12  
Report supplied by auction  
16 loads.  
Alfalfa, 70.00-90.00; Mixed hay, 50.00-57.00; Timothy, 40.00-72.50; Straw, 59.00; and Ear Corn, 101.00-114.00.

## New Holland Hay

New Holland Sales Stables  
Monday, July 11  
Report supplied by auction  
102 loads; new crop market steady and corn market strong.

Alfalfa few top loads second cutting 101.00-122.00, first cutting 60.00-85.00; Mixed mostly first cutting new few Timothy & Alfalfa over 100.00; Clover and Timothy Choice 75.00-90.00, mostly 60.00-75.00; Timothy 60.00-75.00; several loads for Mulch 48.00-54.00; Clover 49.00-54.00; Straw mostly 78.00-92.00, some off-color 60.00-70.00; Ear Corn 109.00-118.00; Oats 2.15-2.35 bu.; Barley 2.25 bu.

## Kiester's Hay

Middleburg, Pa.  
Tuesday, July 12  
Report supplied by auction  
22 loads.  
Mixed 32.00-45.00; Alfalfa 53.00-75.00; Four loads of straw 37.50-42.50; Ear Corn 95.00-100.00; Oats 1.50 a bushel.

## Good's Hay

Leola, Pa.  
Wednesday, July 13  
Report supplied by auction  
54 loads.  
Mixed 42.00-89.00; Straw 64.00-90.00; Alfalfa 34.00-113.00; Timothy 40.00-58.00; Corn 112.00-120.00.

## Pa. Grain

Monday, July 11  
Report supplied by PDA  
Compared with last Tuesday's market for Southeastern, Central and South Central Pa. Corn steady to 2 cents lower. Wheat steady to 5 cents lower as more new crop comes on the market. Barley unevenly steady. Oats steady to 4 cents lower. Ear Corn mostly steady, spots \$1 lower.

Prices paid delivered to dealers dock - (All prices per bushel, except Ear Corn per ton.)

**Southeastern Pa.**  
Corn No. 2-y range 3.45-3.70, average 3.58, New Crop 2.78-2.91; Wheat No. 2 range 3.30-3.60, average 3.41, Barley No. 3 range 1.85-2.00, few reported 2.15, average 1.98; Oats No. 2 range 1.65-1.95; average 1.78; Soybeans No. 1 range 5.90-6.00, average 5.95, New Crop 5.95-6.14; Grain Sorghum #2 range 2.80, average 2.80; Ear Corn range 95.00-100.00, average 97.08.

**Central Pa.**  
Corn No. 2-y range 3.40-3.60, average 3.49; Wheat No. 2 range 3.20-3.50, average 3.33; Barley No. 3 range 1.85-2.15, average 1.96; Oats No. 2 range 1.50-1.90, average 1.69; Soybeans No. 1 range 5.25-5.40, average 5.33; Gr. Sorghum #2 range 3.20, average 3.20; Ear Corn range 85.00-98.00, average 92.67.

**South Central Pa.**  
Corn No. 2-y range 3.45-3.55, average 3.51; Wheat No. 2 range few reported 3.15-3.40, average 3.26; Barley No. 3 range 1.85-2.00,

average 1.94 Oats No. 2 range 1.70-1.85, average 1.75; Ear Corn range 85.00-100.00, average 93.45.

**Southeastern, Central & South Central Summary**  
Corn No. 2-y range 3.40-3.70, average 3.53; Wheat No. 2 range 3.15-3.60, average 3.35; Barley No. 3 range 1.85-2.15, average 1.97; Oats No. 2 range 1.50-1.95, average 1.73; Ear Corn range 85.00-100.00; average 94.83.

**Western Pa.**  
Corn No. 2-y range 3.20-3.60, average 3.40; Wheat No. 2 range 3.10-3.20, average 3.14; Barley No. 3 range 1.90-1.95, average 1.93; Oats No. 2 range 1.60-1.75, average 1.66; Ear Corn range 80.00-91.00, average 85.00.

## St. Louis Cattle

Thursday, July 14  
Report supplied by USDA  
Receipts This Week 3,600  
Week Ago 1,700  
Year Ago 4,700

Compared to last week, Slaughter Steers 1.50-2.00 lower. Slaughter Heifers 2.00-2.50 lower. Cows 1.00-2.00 lower, most decline on boning Utility. Bulls steady. Slaughter supply mainly Choice and Mixed Choice and Prime Slaughter Steers, around 30% Heifers and 5% Cows.

**SLAUGHTER STEERS:** Mixed Choice and Prime 2-4 1050-1300 lbs. 61.50-63.50, part load early 64.00, closing 61.50-62.25. Choice 2-4 950-1250 lbs. 60.00-63.00 closing sales 60.00-61.50. Mixed Good and Choice 2-4 900-1200 lbs. 58.00-62.00, closing 58.00-60.00. Good 2-3 900-1175 lbs. 56.00-60.00. Mostly Good 2-3 1050-1350 lbs. Holsteins 52.00-57.00. Few lots Standard to Good 1100-1275 lbs. 49.00-54.25.

**SLAUGHTER HEIFERS:** Mixed Choice and Prime 2-4 875-1100 lbs. 59.50-61.50, package early 62.00, closing 59.50-60.00. Choice 2-4 850-1050 lbs. 58.00-61.00, closing week sales 58.00-59.50; 800-850 lbs. 56.00-

60.00. Mixed Good and Choice 2-3 850-1000 lbs. 56.00-60.00; 750-850 lbs. 54.00-58.00. Good 2-3 750-975 lbs. 53.00-58.00.

**COWS:** (Closing week sales) Utility and Commercial 2-4 39.00-42.00. Boning Utility 1-2 42.00-44.00. High-Yielding Utility 1-2 44.00. Cutter 1-2 38.00-41.00. Canner and low Cutter 1-2 34.00-38.00.

**BULLS:** YG 1-2 1050-2000 lbs. 48.00-54.00. Few YG 155.00.

Wednesday's Weekly Sheep Auction receipts about 500 head. Compared last Wednesday, Spring Slaughter Lambs 4.00-6.00 lower. Other Slaughter classes scarce, prices not well tested. No recent comparison on Feeder Lambs.

**SPRING SLAUGHTER LAMBS:** Choice and Prime 95-123 lbs. 44.00-50.00. Small lot Prime 120 lbs. 53.50. Choice 80-100 lbs. 41.00-43.50.

**FEEDER LAMBS:** Scattered lots Choice and Fancy 70-80 lbs. 43.00. Small lot good 67 lbs. 35.00.

**FEEDERS:** (including around 600 at the regular Thursday Auction.) Feeder Steers and Heifers unevenly 2.00-4.00 lower, but not all grades and weights both classes represented in sufficient numbers in the light supply to fully test prices.

**FEEDER STEERS:** Medium Frame 1: small lots 350-475 lbs. 64.75-67.75; scattered lots 500-600 lbs. 59.50; small lots and individual head 750-1000 lbs. 55.50-58.25; lot fleshy 1040 lbs. 58.50. Medium Frame 1-2; small lots and individual head 700-750 lbs. 5.50-54.50. Large Frame 2 Holsteins: couple lots 775-925 lbs. 45.00-45.25.

**FEEDER HEIFERS:** Medium Frame 1: few lots 340-365 lbs. 53.50-53.75. Medium Frame 1-2 and some small frame 1; several lots and individual head 400-600 lbs. 48.50-51.50.

**STOCK COWS:** Small lot small frame 1 young 740 lbs. 45.00.

# NEW HOLLAND SALES STABLES, INC. - THE ACTION AUCTION

## MONDAY



**FAT HOGS**  
**FARLY BIRD HOG SALE**  
For Your Protection Your Hogs Must Be Identified

## 10:00 AM



## 11:00 AM



**HAY STRAW GRAIN**



**1:30 PM BEEF SALE CALF, SHEEP, GOATS**

## WEDNESDAY

### 12:00 NOON



**HEIFERS, BULLS**  
**NEW HOLLAND SALES STABLES, Inc.**

12 Miles East of Lancaster on Route 23, New Holland, Penna

**The Action Auction**  
**717-354-4341**

Mgr. - Abe Diffenbach - 717-393-4464  
Norman Kolb - 717-397-5538

Field Representatives  
Alan Diffenbach 717-656-9806  
Luke Eberly 215-267-6608 - 738-1865

**WEDNESDAY FEEDER PIG SALE**  
**1:30 P.M.**



We endeavor to keep our barns cleaner than yours.  
State graded until 12 Noon

## THURSDAY

### 11:00 AM



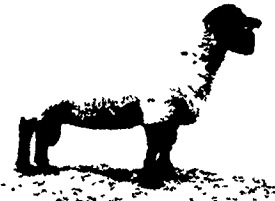
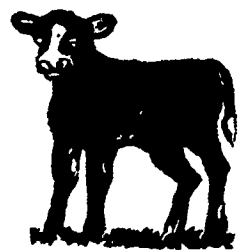
**BULLS -**



**STEERS - BEEF COWS**

### 3:30 P.M.

**CALVES**



**SHEEP GOATS**

Market your livestock thru New Holland Sales, your neighbor does  
Pick-up your check before you leave