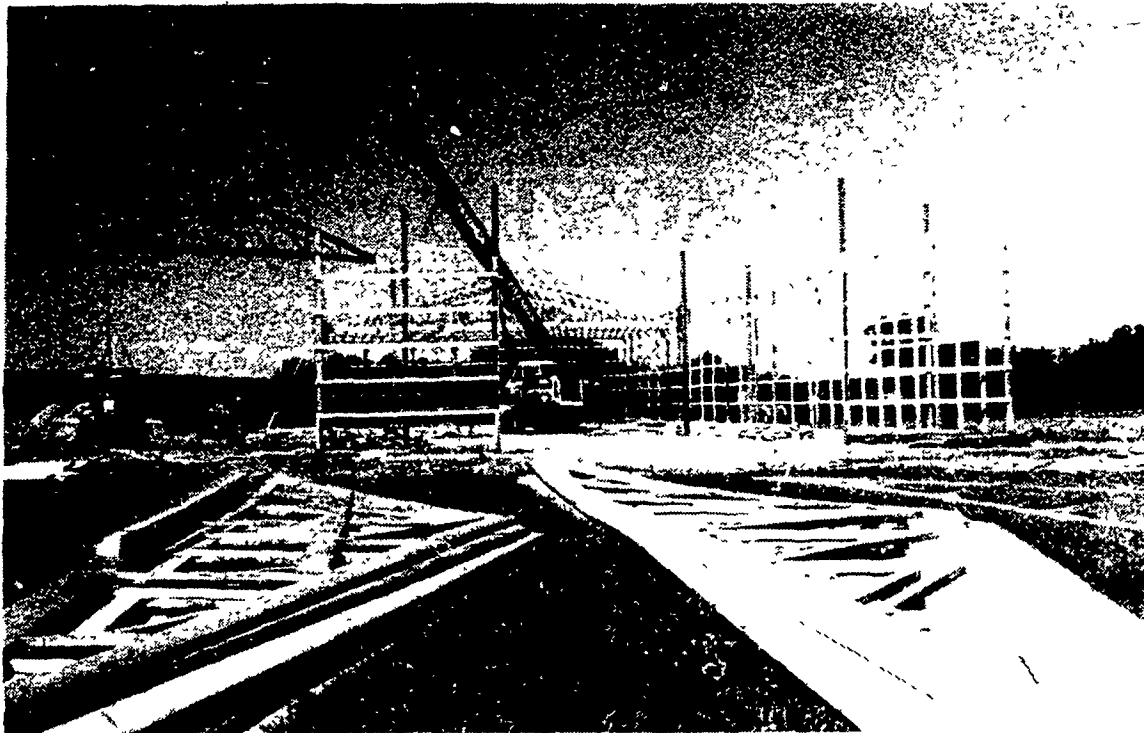


Pa. forage/dairy day



New machinery and storage building, measuring 60 by 200 feet, is being constructed to be utilized as exhibitor building at Forage and Dairy Day at Hershey Farms on Tuesday.

(Continued from Page A1)

For the fertility study, Dugan said, another alfalfa plot has been divided into four sections, each receiving its own treatment. One section, serving as the control, has received no fertilizer.

The second section has been treated with liquid dairy manure, the third with manure and a maintenance fertilizer applied in the fall, and the fourth has received just the maintenance fertilizer, he said.

The maturity plots have been planted and harvested to show the various stages of alfalfa growth and cutting intervals. These include: full bloom; 45-day interval; 35-day interval; 30-day interval; and 22-day interval, Dugan said. Results of the 1981-82 variety trials at Penn State for 34 different alfalfas will be outlined.

The dairy topics will focus on cow nutrition, management, and reproduction. Em-Tran, Inc., of Elizabethtown, will demonstrate embryo transfer techniques in two separate shows, Dugan said.

Mini Hay Auction

A special attraction of Forage-Dairy Field Day will be a mini hay auction, with hay for sale from area farmers. Each load will be sampled for quality and analyzed by the NIR unit, and the results will be posted on each load. The hay will be auctioned off on the basis of its chemical and visual evaluation.

In addition to the mini auction, agri-business and educational displays will be set up in a newly constructed machinery shed. The shed, built by Morton Buildings, of Gettysburg, was completed in a week and is a 60' x 200' structure. Machinery will also be on display and refreshments will be furnished.

The purpose behind Forage-Dairy Field Day is to get back to the basics of education, Dugan said, and to utilize this education to increase production and better management skills.

Machinery use will be limited to the Pioneer plot sampler and a Hershey haybine. Exhibitor's new machinery will not be demonstrated.

Make a good deal a good deal better.

There's never been a better time to buy an 18- to 30-hp* compact diesel tractor. Because now you can choose the way you save on a new International® 200 Series tractor. Choose either:



\$400 OFF (234,244)
\$500 OFF (254) **OR...**
\$550 OFF (284)

9.9% APR
FINANCING
for up to 36 months

These versatile workhorses feature live hydraulics, 3-pt. hitch, rear PTO and a lot more. So come in and take advantage of these special savings. Offer good thru July 31, 1983.

*Mfg's estimated engine hp



A real feel
for the work you do.



INTERNATIONAL HARVESTER

R.S. HOLLINGER & SON, INC.

PARTS & SERVICE

INTERNATIONAL
AGRICULTURAL
EQUIPMENT

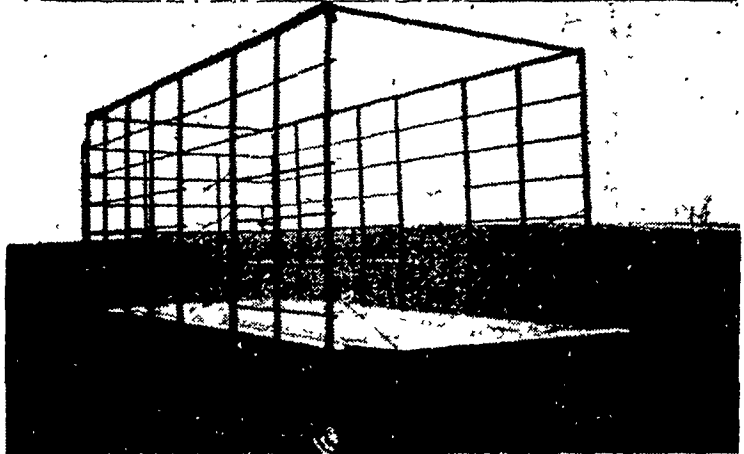
113 W. Main St.
Mountville, PA
Ph: 717-285-4538

Store Hours:
Mon., Wed., Fri. 7 to 8;
Tues. & Thurs. 7 to 5:30;
Sat. 7 to 2



HAY WAGONS FOR SALE

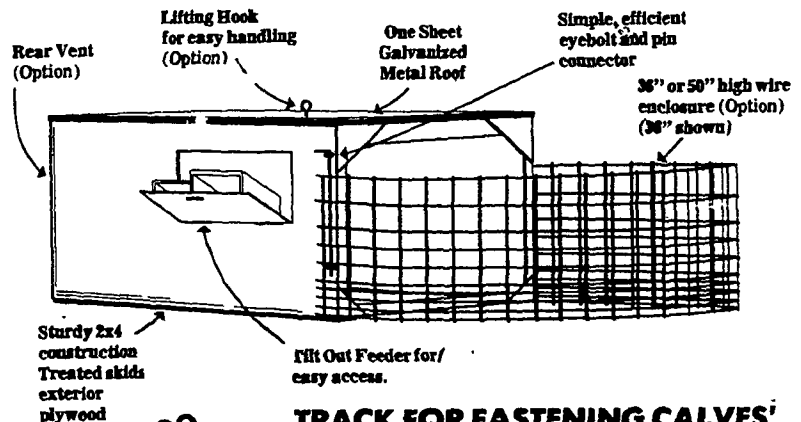
Wood or Steel



3 Sizes Available...16', 18', 20'
with or without running gear

• Also will fit sides onto your flat wagon.

Compare the Stoltzfus Woodwork Calf Hutch



ALSO
AVAILABLE:

TRACK FOR FASTENING CALVES'
CHAIN TO CEILING OF HUTCH

Maryland:
LEROY HILDEBRAN
Woodsboro, Md.
301-845-8929

Berks County:
JOE RUTH
RD #4133 Fleetwood, Pa. 19522
215-944-7571

Lebanon County:
UMBERGER'S MILL
Rt. 322, RD#4 Lebanon, Pa.
717-867-5161

Lancaster County:
JOHN L. LANDIS
1801 Colebrook Rd.
Lancaster, Pa. 17601
717-898-7689

MFD.
BY:

STOLTZFUS WOODWORK

RD 2, Box 2280, Gap, PA 17527
717-442-8972