

Bucks Co. DHIA

(Continued from Page D18)

OWNER	BREED	NO. COWS	% DAYS IN MILK	LBS. MILK	LBS. FAT
Lynn	7-4	305	21,511	700	
Hazel	6-6	305	21,374	686	
Bessann	2-1	305	17,449	604	
Lizzie	1-11	305	17,507	679	
Harold Haldeman					
Pride 2	6-11	305	15,348	574	
Karol	7-5	305	18,369	725	
Grand	2-4	305	13,703	551	
Yeller	1-9	305	13,326	570	
Bishcroft Farm					
Inka	7-10	289	19,808	720	
Dime	6-11	303	14,985	579	
Lyn	6-9	298	17,076	599	
Dew	6-1	298	14,852	588	
Mert	5-6	305	18,377	788	
Gypsy	5-8	303	19,348	566	
Vera	4-10	305	19,588	684	
Julia	3-4	305	21,748	913	
Diamond	2-11	305	13,414	594	
Elsie	3-3	305	16,217	610	
James I. Beyer					
Lisa	4-9	305	13,617	621	
Peanut	3-6	296	11,325	640	
Carl Slack					
Eve	9-5	305	17,486	677	
Flora	7-7	305	20,453	653	
Felicia	6-5	305	21,113	736	
Valerie	3-5	305	15,799	664	

OWNER	BREED	NO. COWS	% DAYS IN MILK	LBS. MILK	LBS. FAT
David R. Wolfinger	J	33.4	89.3	19,834	703
Crooked Acres Dairy	J	63.0	85.4	18,939	698
Theodore S. Wilson	B3	66.9	87.6	19,542	697
Breezyvale Farms Inc.	J	84.2	88.7	18,811	687
Delaware Val College	J	39.6	84.5	18,741	686
Walter & David Wurster	J	60.8	89.6	19,692	686
Delaware Val College	J	11.6	88.8	16,166	681
J. Howard Ruth	B3	35.1	88.1	19,096	677
John Thompson & Sons	J	82.7	86.8	18,093	675
Richard O. Smith	J	71.0	88.0	14,327	672
Paul L. Bishop	B3	60.1	89.3	18,709	667
Wilmer W. Rush	J	32.1	87.9	17,639	663
Penrose Anc	J	87.1	83.6	17,979	660
Roy Shull	B3	196.5	86.6	17,522	658
Ken & Virginia Hager	B3	49.6	88.0	18,501	651
Robert Crouse	B3	64.3	87.0	16,749	641
George & David Bishop	J	88.8	88.3	18,036	640
Robert A. Holland	J	54.5	91.3	16,567	637
Clifford W. Moyer	B3	68.1	89.9	17,764	637
P&C Berger	J	45.8	89.3	17,050	635
Paul & Doris Daniels	B3	70.4	87.6	17,416	634
Wm & Eleanor Gunser	J	61.8	89.1	17,881	634
Carl Slack	J	48.0	88.9	17,335	630
Bishcroft Farm	J	126.7	88.3	17,047	626
James Pavlica	J	45.4	88.7	16,815	622
Raymond Gross	J	46.4	87.4	17,457	615
Paul Keeler, Jr.	B3	47.2	88.8	15,806	606
James I. Beyer	J	50.4	87.7	12,382	606
Harold Haldeman	J	107.1	89.8	16,576	606
Urmy Bros.	J	27.1	92.3	16,451	605
Robert R. Gehman	B3	56.6	87.4	16,772	599
James Phillips	J	54.2	85.4	16,885	599
Delaware Val College	J	8.9	85.3	15,699	594

Willow Ridge Farm	J	48.7	85.7	16,171	591
Joseph M. Peters	J	50.5	87.0	16,701	590
Stephen Natali	B3	38.3	88.5	15,116	590
Frederick Bros	B3	65.3	85.2	16,635	584
David R. Walton	J	45.9	86.0	16,716	582
Phillip W. Gayman	B3	44.0	85.4	15,281	574
Nicholas Bros	B3	127.0	86.1	14,517	557
Paul Wisser	B3	53.8	88.8	14,705	552

COLUMBIA COUNTY DHIA

May 1983

Frank L. Jurbala	46.1	20,956	766
Richard Kriebel	43.7	20,254	750
Shultz Bros	69.2	18,059	719
Robert C. Bronson	50.4	18,541	705
John W. Turofski	32.4	19,270	697
Circle C Farms	25.8	18,060	672
Richard Kriebel	20.1	14,017	669
Richard Yule	38.4	18,253	659
Barry D. Wise	49.9	17,531	649
Tri Vale Farms	38.9	16,292	648
Pen Col Farms	124.2	16,786	642
Duane E. Shuman	22.6	17,636	606



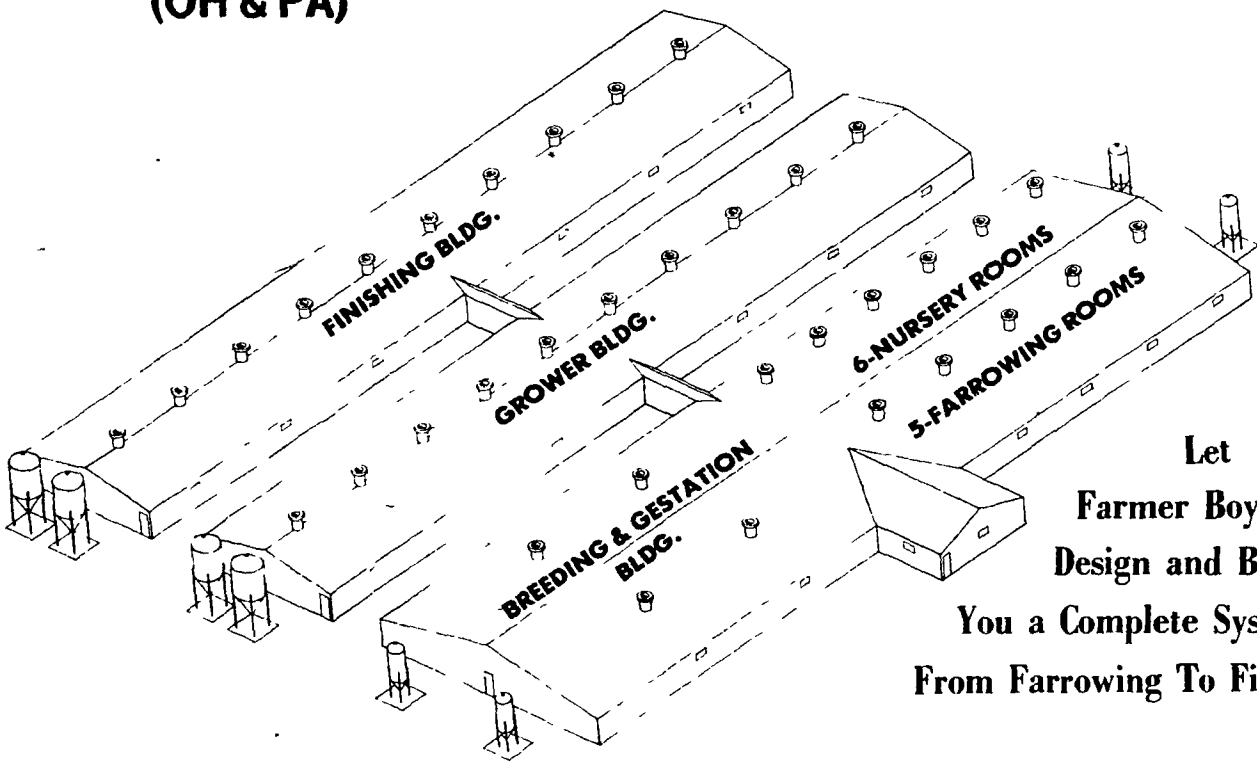
PORK PRODUCTION FOR PROFIT

Who has built or remodeled Swine complexes for more than:

1. 5,000 Sows — 2. 15,000 Finishing Hogs

3. Built 2 of the latest DeKalb Crossing Farms (OH & PA)

4. Built 2 of Kleen Leen Boar Farms



Let Farmer Boy Ag Design and Build You a Complete System From Farrowing To Finish

"FARMER BOY AG" has helped many Pork Producers become Profitable

SWINE & POULTRY SYSTEMS SPECIALISTS

FARMER BOY AG. INC.

410 E. LINCOLN AVE. MYERSTOWN, PA 17067 PH 717-866-7565

BEST IN DESIGN, PRICE AND EXPERIENCE

NORTHAMPTON FARM BUREAU CO-OPERATIVE ASSOCIATION

TATAMY, PA

★ FEED, SEED CHEMICALS

★ LIME AND FERTILIZER CUSTOM APPLICATION

★ TEXACO PETROLEUM PRODUCTS

★ SIMPLICITY LAWN & GARDEN EQUIPMENT

EASTON 215-258-2871

DUSSINGER'S QUALITY STOVES

New Location July 1st

2533 Old Phila. Pk., Smoketown, Pa. 17576

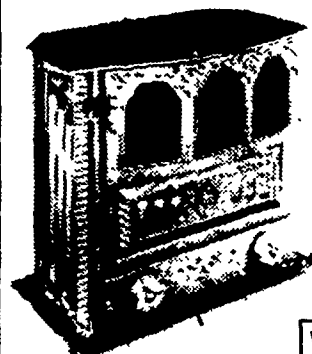
New Hours:

Tues., Thurs., Fri. 10 A.M. - 8 P.M.

Wed. & Sat. 10 A.M. - 5 P.M.

Monday By Appointment

"Expert Guidance, Installation & Service"



Crane Stoves.

Nobody In This Whole Country Makes A Better Coal Stove Than Crane!

WE FEATURE MANY MODELS OF STOVES AND INSERTS.

Crane - Liberty Bell - Comforter - Coalbrookdale

(717) 397-7539

"A Remarkably Efficient Coal Stove!"