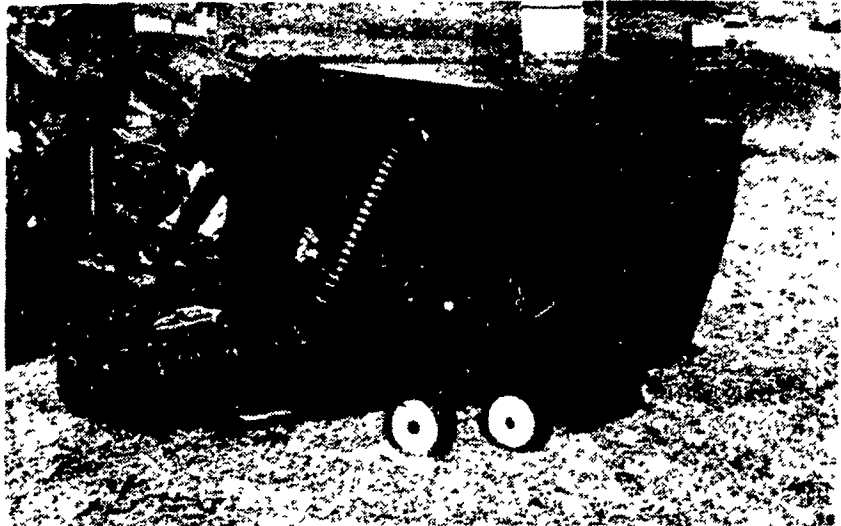


NOW AVAILABLE...THE NEW

# ESTATE

48", 60" and 72" REAR MOUNTED ROTARY MOWER  
With GRASS CATCHER ATTACHMENT



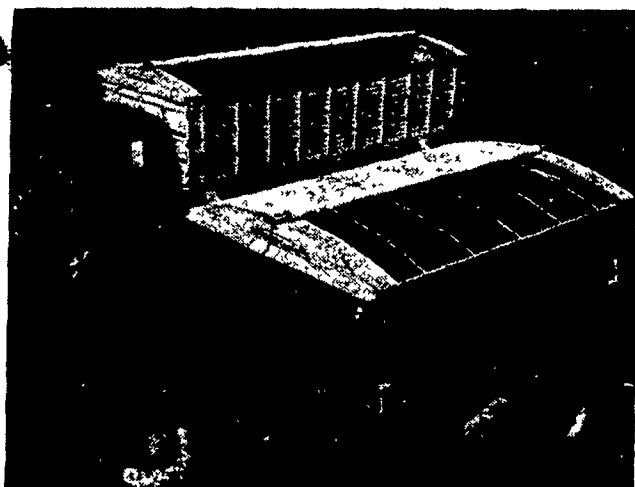
- Grass Catcher and Leaf Catcher
- All Steel Construction
- 17 Bushel Capacity
- Semi-Mounted Hopper floats independently of mower
- 14" Blower Fan



BUY THE PROVEN . . . INSIST ON BMB

*Call Now For A  
Free Demonstration*

**WE WILL TRADE YOUR  
OLD MOWER**



Windproof, weather tight protection for your loads and box. Simply roll-on and roll-off Coverall while standing on the ground. The unit is available for truck, gravity and auger boxes 10 to 22 ft. long and 6 to 8 ft. wide. The cover is made of 18 oz. vinyl-coated nylon.

14, 16, 18 & 20 Ft. Models In Stock

**BUSH HOG SQUEALERS  
NOW AVAILABLE IN THREE SIZES -  
Over 10 In Stock**

- SQ42-42" Rotary Cutter . . . . . \$495.00
- SQ48-48" Rotary Cutter . . . . . \$550.00
- SQ60-60" Rotary Cutter . . . . . \$595.00



Division of Hesston Corporation



RM 90  
90" Cut

NOW IN STOCK  
We Stock Woods Parts



THE NEW  
**ECONO-6**

6 PT.  
3 PT.

ROTARY  
CUTTER

- 3 Pt. Cat. I Hitch
- 1 1/2" - 12" Cutting Height
- 14N Series Driveline



- 40 H.P. Gear Box
- 540 R.P.M.
- Shear Pin Protected

5 In Stock

SPECIAL  
PRICE  
**\$795.00**

## NEW & USED OLIVER TRACTOR PARTS

- 1 - 155720A Engine Block (Reconditioned)  
1800 Gas & Diesel - Serial #124396 - 134683
- 1 - 166425A Engine Block (Reconditioned)  
1650 - 1655 Diesel - Direct Injection
- 1 - 104305R Engine Block (Reconditioned)  
880 Gas & Diesel
- 1 - 158544A Engine Block (Reconditioned)  
1650 Diesel - Serial #147569 - 187585  
1800 Gas - Serial #124396 & Up 1750 Gas
- 2 - 30-3000044 Cylinder Head w/Valves  
1750-1755-1855 Diesels, 5/8" Head Bolts
- 1 - 157159A Cylinder Head w/Valves  
1800 Gas - Serial #90525-124395
- 1 - 102379A - Cylinder Head w/Valves 550 & 660 Gas
- 1 - HSA - 180 Cylinder Head w/Valves 60 Gas
- 3 - Adjustable Reg. Wide Front Axle Assy.  
1550-1600-1650-1655
- 1 - Adjustable Reg. Wide Front Axle Assy.  
1750-1755-1800-1850-1855-1900-1950-1955
- 2 - Adjustable Underslung Front Axle Assy.  
1750-1755-1800-1855-1900-1950-1955
- 2 - Hydra-Power Transmission (Rebuilt)  
1550-1600-1650
- 2 - Hydra-Power Transmission (Rebuilt)  
1750-1800-1850-1900-1950
- 1 - Over/Under Transmission (Rebuilt) 1555-1650-1655
- 1 - Over/Under Transmission (Rebuilt)  
1750-1755-1850-1855-1950T-1955
- 1 - Belt Pulley Assy. For 55 & 550

**Call Paul Weaver For All your  
NEW & USED Oliver Replacement Parts**  
We Will Ship UPS Daily, Mon.-Fri. At 4:00 P.M.

### A BROKEN HYDRAULIC HOSE CAN COST YOU HUNDREDS OF DOLLARS...

...in lost or damaged crops. When there's work to be done in the fields it's important to keep your farm machinery on the job. When there's a breakdown you can't afford to wait for a new hose assembly to be shipped from the factory.

**But it doesn't have to....**

**WE MAKE HOSE ASSEMBLIES WHILE  
YOU WAIT...** ... assemblies which are exactly like the original and better! To put your equipment back to work in the fields fast! You don't lose valuable time, don't lose crops

COLLO CRIMP® SYSTEM

WEATHERHEAD



# FARMERSVILLE EQUIPMENT INC.



**Bolens  
DIESEL TRACTORS**

RD 4, East Farmersville Road, Ephrata, PA 17522  
Located in the Village of Farmersville, Lancaster County  
**717-354-4271**

Hours: Mon., Thurs. 8 AM - 8 PM; Tues., Wed., Fri. 8 AM - 5 PM; Sat. 8 AM - 3 PM

