

## Your corn is worth \$3.68 per bushel.

# Pennfield Complete Feeds can save you money. Compare for yourself:

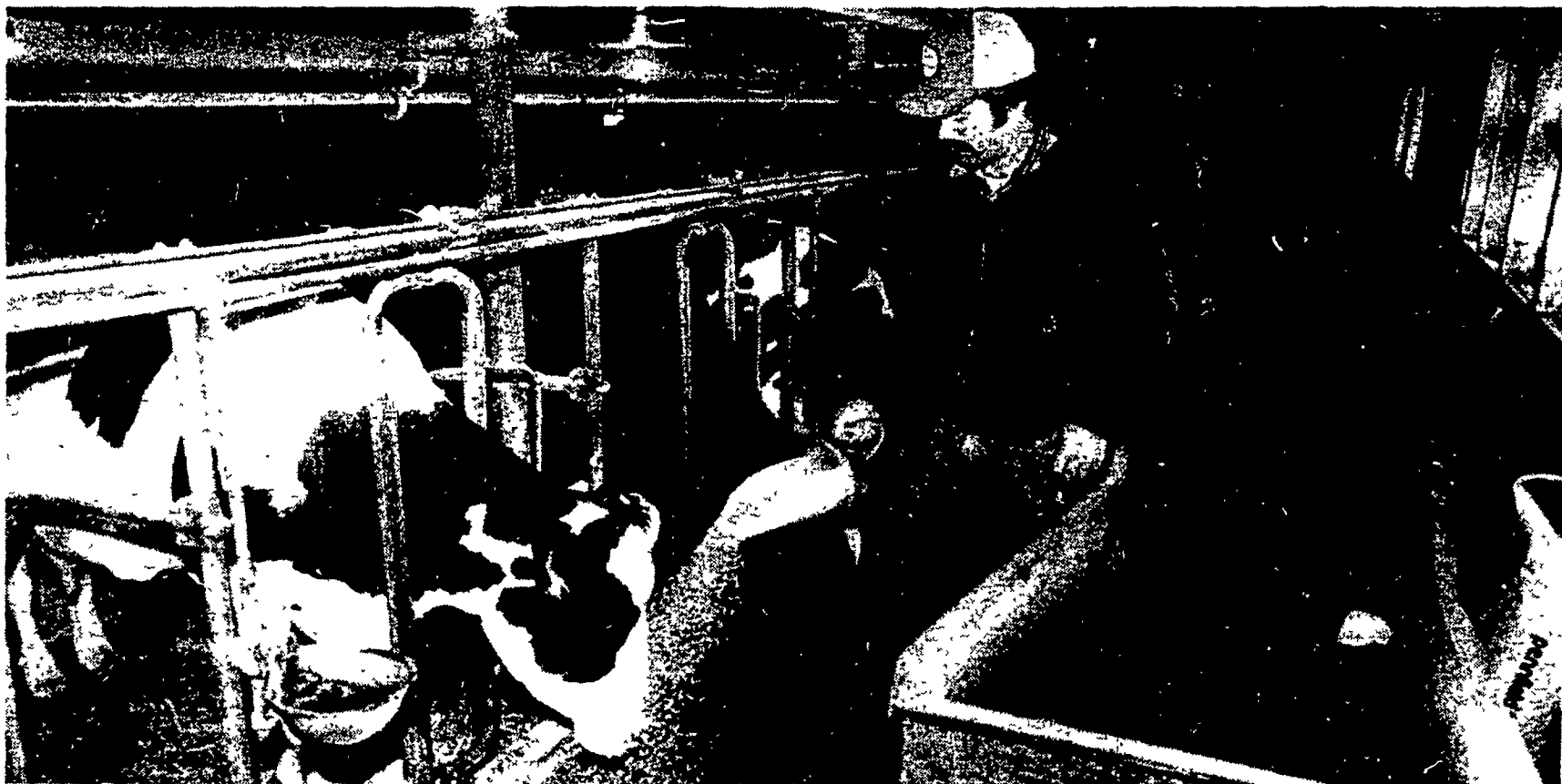
Here is what it costs to buy Pennfield's Dairy Feeds

#513 Dairy 16% Pellets <b>\$156.78</b> Net/Ton	#513/#506 Dairy 18% Flake/Pellet Blend <b>\$166.43</b> Net/Ton	#519 Dairy 20% Pellets <b>\$169.85</b> Net/Ton
------------------------------------------------------	----------------------------------------------------------------------	------------------------------------------------------

Here is what it costs to make your own 16% grind and mix ration

Ingredient	Cost/Unit	Total Cost	Crude Protein
440 lbs. 48% Soybean Meal	\$218.00/Ton	\$47.96	211 lbs.
400 lbs. Shell Corn	\$ 3.68/Bushel	\$26.28	34 lbs.
1000 lbs. Ear Corn	\$105.00/Ton	\$52.50	75 lbs.
100 lbs. Molasses	\$ 7.00/Ton	\$ 7.00	3 lbs.
60 lbs. Vitamin-Mineral Premix	\$ 17.82/40 lb. bag	\$26.73	—0—
Grinding & Mixing Charge	\$ 9.50/Hammermill Mix	\$ 7.95	—0—

**TOTAL COST PER TON: \$168.42** 323 lbs. = 16.1%



You can see for yourself — Pennfield gives you  
the **BEST FEED VALUE** for your feed dollar.



**pennfield feeds**

711 Rohrerstown Road  
Box 4366, Lancaster, PA 17604

Call 299-2561 or Toll free:  
PA: 1-800-732-0467  
MD: 1-800-233-0202

Includes 4 ton volume discount and cash discount of 2½% due 15th following month.  
Prices effective June 27, 1983 and subject to change with grain markets.

Quality - Performance - Service