

Dauphin holds dairy judging contest

HARRISBURG — The Second Annual 4-H Dairy Judging Contest for Dauphin County drew 22 members in competition in three divisions. Five classes of cattle were judged and senior members gave two sets of reasons.

The highest placings score was by Glen Campbell, Lykens, who had 230 points in the junior division.

Other division winners were Steve Shetterly, Millersburg, in the intermediate division and Tony

Williams, Middletown, in the senior division.

Cattle were judged at Great View Farms (Paul Miller & Sons) and Jarvis Holsteins (Jay Brandt). Lloyd Pease from Atlantic Breeders was the official judge.

More complete results are as follows:

Senior Division
1. Tony Williams, Middletown; 2. Tina Campbell; 3. David Feidt, Elizabethtown.

Intermediate Division
1. Steve Shetterly, Millersburg;
2. Sammy Williams, Middletown;
3. Kim Boyer, Millersburg.

Junior Division
1. Glen Campbell, Lykens; 2. (tie) Linda Buffington, Millersburg; 3. (tie) Floyd Buffington, Millersburg.

Block farm

visit set

WASHINGTON, D.C. — Secretary of Agriculture John R. Block has invited ministers of agriculture from 50 countries to visit his Illinois farm June 25 for a tour and informal discussion of the world food situation. Many of the ministers will be in the United States for the annual meeting of the World Food Council in New York June 26-30.

"This visit will allow us to meet in an informal setting to discuss topics of mutual interest," Block said. "It would also give our guests a grass roots look at U.S. agriculture, which has a very important role in world food security."

On the Block farm, the visitors will tour test plots and fields employing soil conservation techniques. They also will view hog production facilities and methods, farm equipment and storage areas.

FRUITS AND BERRIES FOR HOME PRESERVING BIG VARIETY NOW IN STOCK

Listen to WDAC FM 94.5 with the weather at 6:20 P.M. Mon. Wed. & Fri. for latest information

Phone first before coming.

Must have advance order for Black Raspberries

W. L. ZIMMERMAN & SONS

Open Thurs. 10:30 Fri. 10:00 P.M.
717-768-8291
Intercourse, Penna

BARTLETT PACKAGING

"Full Service Warehouse"

Packaging Supplies For -

- Poultrymen
- Fruit Growers
- Produce Farmers
- Roadside Stands
- Greenhouses & Nurseries
- Records & Storage
- And Others

Pick Up & Delivery Service

Give us a call or stop in. We probably have just what you need. Located east of Mt. Joy on Eby's Cheque Road (2nd building on right)

Bartlett Packaging
RD 3 Box 340
Mt. Joy, PA 17552
717-653-9444

KUBOTA DIESEL LAWN AND GARDEN TRACTORS

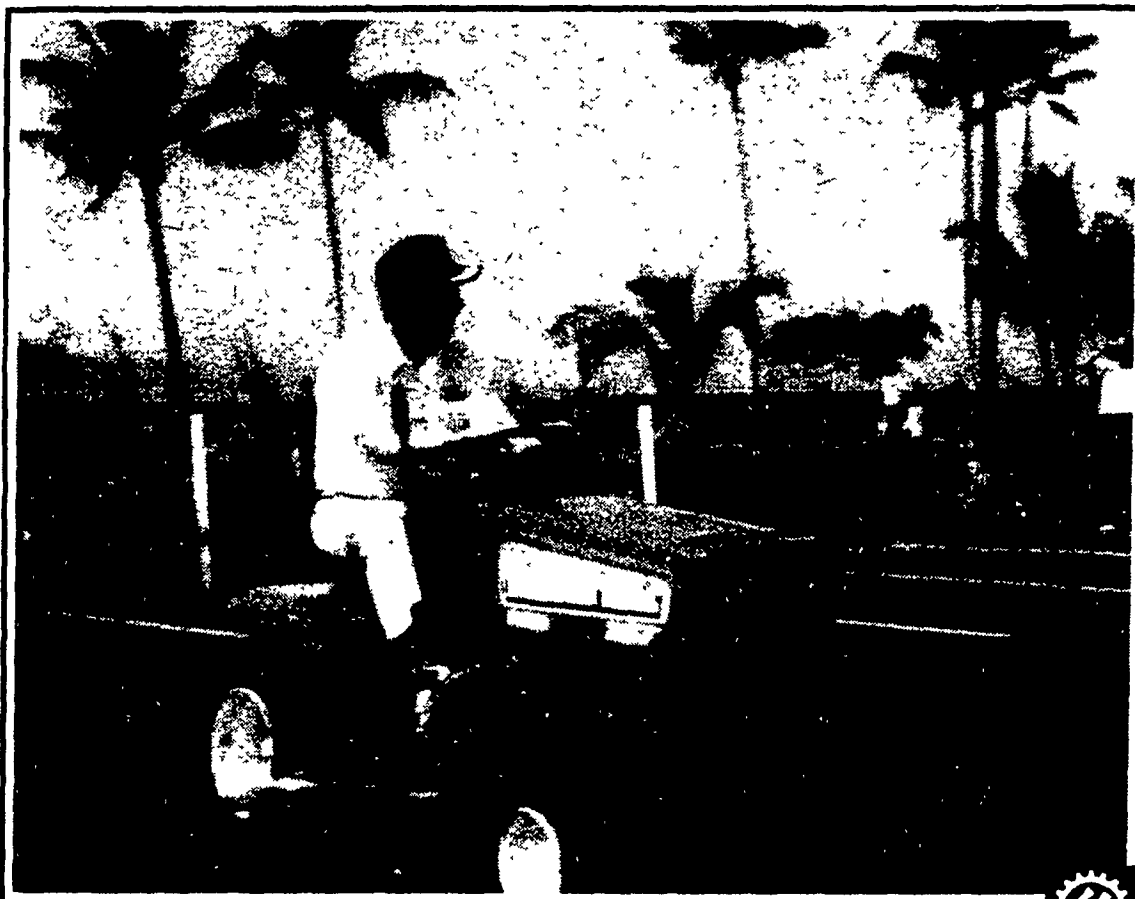
• **G3200**
10 HP Gear

• **G4200**
12 HP Gear

• **G4200H**
12 HP Hydro-static

• **G5200H**
14 HP Hydro-static

Here It Is! A New Generation: The Smallest Water-Cooled, Two-Or Three-Cylinder Compact Diesel Engine Lawn and Garden Tractors With The RC44-G Mid-Mount Mower.



- Compact Diesel
- Economical and Reliable
- Fast Starting
- Forward Air Flow
- Maneuverable and Easy to Operate
- Styled for Good Looks, Good Visibility and Low Noise
- Has Good Flotation Characteristics
- Comfortable
- Well-Designed Instrument Panel
- "Live" Front PTO Shaft Drive
- Parallel Linkage
- Good Grass Flow and Discharge
- Built-In Safety Features

You Must See & Drive To Appreciate!

KUBOTA

Nothing like it on earth.™

COMPLETE LINE OF B & L SERIES KUBOTAS IN STOCK

JUNE CLEARANCE ON USED LAWN & GARDEN TRACTORS

	List	SALE PRICE		List	SALE PRICE
12809 LTV II Sea SOLD	\$995	'850 ⁰⁰	12810 7016 Simplicity 16 HP	\$1995	'1750 ⁰⁰
12806 1855 White w/50" Mower	\$2506	'2,300 ⁰⁰	12811B-110 Allis Chalmers	\$895	'750 ⁰⁰
12723 Allis Chalmers 620 w/50" Mower	\$3400	'3100 ⁰⁰	127744 Loader for Cub Cadet 1450 or 1650	\$695	'575 ⁰⁰
12571 Ford 1600	\$4595	'3900 ⁰⁰	12714 Kubota B-6100 w/348 Woods Mower	\$4895	'4375 ⁰⁰
12675 Hahn Rider 5 PH	\$295	'2250 ⁰⁰	12731 Kubota B-6100 E w/48" Mower	\$4695	'4175 ⁰⁰
12813 Snapper w/Rear Bag SOLD	\$695	'595 ⁰⁰	12699 Kubota B-6000	\$3595	'3100 ⁰⁰
12812 7016 Simplicity 16 HP	\$1995	'1750 ⁰⁰			

Only A Partial Listing - Many More To Choose From

SALE PRICES EXTENDED ONE MORE WEEK!

TWO CONVENIENT LOCATIONS:

730 South Broad St.
Lititz, Pa. 17543
on Route 501 6 miles North
of Lancaster
Lancaster County
717-626-2121

KELLER BROS.

1921 TRACTOR CO. 1983

PARTS ★ SALES ★ SERVICE

R. 7 Lebanon, Pa. 17042
Rt. 419 1 mile West of
Schaefferstown,
Buffalo Springs
Lebanon County
717-949-6501