

Livestock market and auction news

St. Louis Cattle

Thursday, June 23

Report Supplied By USDA

Receipts This Week; 3,800;
Week Ago 3,500;
Year Ago 4,100

Compared to the previous week, slaughter steers 1.50-2.00 lower. Slaughter heifers 1.00-1.50 lower. Cows weak to 1.00, instances 2.00 lower on boning utility. Bulls weak to 1.00 lower. Slaughter supply mainly choice slaughter steers arpmid 35% heifers and 10% cows.

SLAUGHTER STEERS: Mixed Choice and Prime 2-4 1050-1275 lbs. 63.00-64.00, closing 63.00-63.50. Choice 2-4 1000-1275 lbs. 61.50-63.50, closing 61.50-63.00; 900-1000 lbs. 60.00-62.00. Mixed Good and Choice 2-4 900-1225 lbs. 60.00-62.00. Good 2-3 900-1175 lbs. 58.00-61.00. Mostly good 2-3 1100-1250 lb. holsteins 52.00-55.50. Part load mixed good and choice 1400 lbs. 57.00. Standard to good 2-3 1075-1200 lbs. 48.00-52.00.

SLAUGHTER HEIFERS: Mixed Choice and Prime 2-4 875-1100 lbs. 61.50-62.50, package early 63.00, closing sales 61.50-62.00. Choice 2-4 850-1050 lbs. 60.00-62.00, closing 60.00-61.50; 800-850 lbs. 58.00-60.00. Mixed Good and Choice 2-3 850-1000 lbs. 58.00-60.50; 750-850 lbs. 57.00-59.00. Good 2-3 750-950 lbs. 55.00-58.00.

COWS (Closing Week Sales) Utility and Commercial 2-4 40.00-43.00. Boning Utility 1-2 43.00-44.00. High-yielding utility 1-2 44.00-45.25. Cutter 1-2 39.00-42.00. Canner and low Cutter 1-2 34.00-39.00. Few Shelly Canner 1-2 31.00-34.00.

BULLS: YG 1-2 1050-1800 lbs. 48.00-54.00, closing 48.00-53.00. Few YG 1 early 55.00, individual late 53.75.

Wednesday's Weekly Sheep Auction. Receipts about 350 head. Compared last Wednesday, spring slaughter lambs 5.00-6.00 lower. Other classes scarce, prices not well tested. Supply mainly spring

slaughter lambs.

Spring Slaughter Lambs: Choice and Prime 80-111 lbs. 44.50-48.00; Couple lots 107-119 lbs. 48.50-49.50. Several lots 70-86 lbs. 40.00-43.50.

SLAUGHTER EWES: Few Utility and Good 7.00-11.00. Few cull 5.00. Few aged bulls 6.50-7.50.

FEEDER LAMBS: Few small lots and individual head choice and fancy 55-72 lbs. 40.00-44.00.

FEEDERS: (including around 600 at the regular Thursday auction.) Feeder Steers and Heifers 1.00-3.00 lower. Supply mainly Medium Frame 1 and Mixed 1-2 500-900 lbs. steers and 350-700 lb. Heifers. Moderate buyer attendance.

FEEDER STEERS: Medium Frame 1: couple lots 420-425 lbs. 69.75-72.50; Scattered lots 525-650 lbs. 63.50-65.00; few 675-725 lbs. 57.50-58.00; scattered lots and individual head 800-1025 lbs. 55.00-59.50. Medium Frame 1-2 and

scattered lots Small Frame 1: 325-550 lbs. 58.50-65.00; few 675-775 lbs. 53.00-56.50. Large Frame 2 Holsteins: several lots 625-775 lbs. 46.75-50.00.

FEEDER HEIFERS: Medium Frame 1: 350-500 lbs. 57.50-63.75; Mostly 59.00-61.50; several lots and individual head 500-600 lbs. 55.00-59.50; scattered lots 600-800 lbs. 53.75-56.50. Medium Framed 1-2 and few Small Frame 1: 375-600 lbs. 53.25-56.50.

COWS AND CALF PAIRS: Few head Small Frame 1 775 lb. Cows with baby calves at side 450.00 per pair.

Belleville Livestock

Belleville, Pa.

Wednesday, June 22, 1983

Report Supplied By PDA

CATTLE 130. Compared with last Wednesday's market; one Good slaughter steer at 60.35; few

Standard 49.35-54.50. One Standard slaughter heifer at 50.50. Utility & Commercial slaughter cows 45.50-48.10, few to 51.00, Cutters 43.50-45.85, Canner & Low Cutter 40.50-43.50, Shells down to 25.50. One Standard slaughter bullock at 53.75. Few Yield Grade #1 900-1795 lbs. slaughter bulls 50.50-58.75. Few Medium Frame #1 450-730 lbs. feeder steers 60.00-67.50.

CALVES 226. Few Choice vealers 84.00-88.50, few Good 65.00-80.00, few Standard & Good 110-120 lbs. 60.00-65.00, 70-105 lbs. 50.00-60.00, Utility 50-85 lbs. 40.00-50.00. Farm calves, holstein bulls 90-125 lbs. 63.00-84.00, mostly 70.00-80.00; holstein heifers 85-110 lbs. 57.00-75.00.

HOGS 164. US No. 1-2 205-230 lbs. barrows & gilts 46.00-46.85, No. 1-3 200-250 lbs. 43.75-45.75, No. 1-3 140-175 lbs. 38.25-41.75, US No. 1-3 310-575 lbs. 32.00-35.75. Few Boars 26.50-38.00.

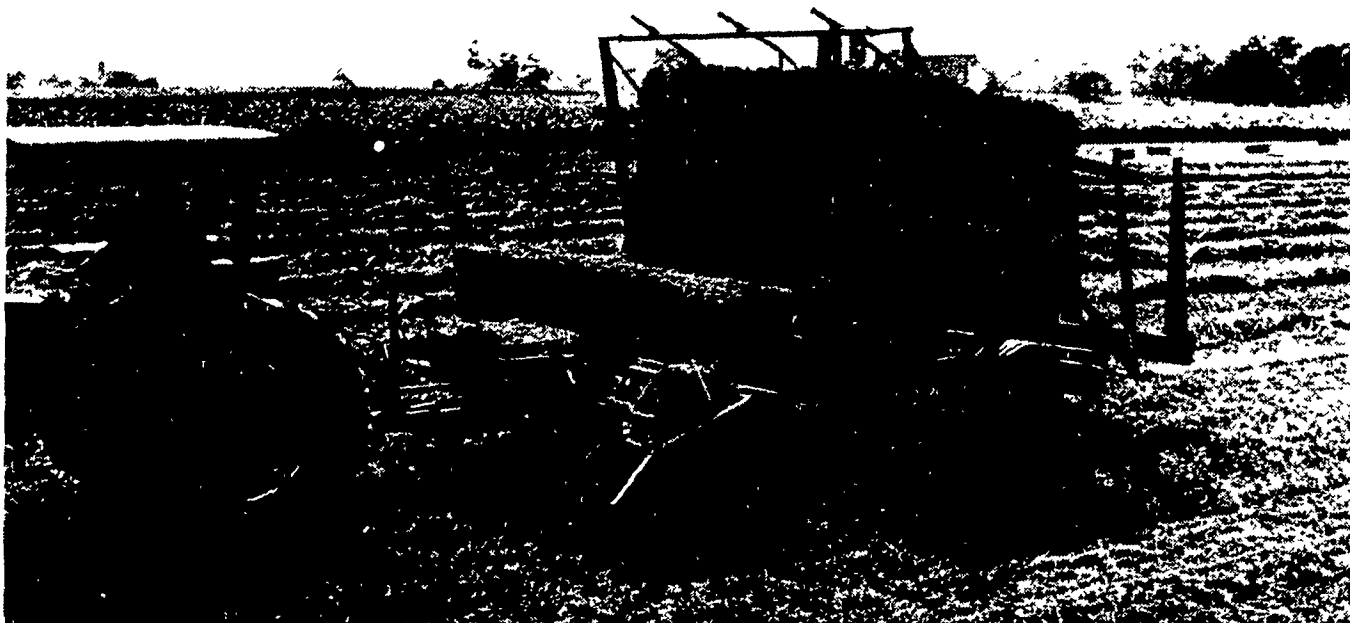
FEEDER PIGS 370. US No. 1-3 20-35 lbs. feeder pigs 20.50-29.50 per head, No. 1-3 35-50 lbs. 27.00-40.00, No. 1-3 50-60 lbs. 38.00-46.50, lot No. 1-3 160 lbs. 66.00 per head.

SHEEP 26. Choice 75-100 lbs. spring slaughter lambs 50.00-58.50, few 45-55 lbs. 60.00-72.00. Few Slaughter ewes 10.50-20.00.

GOATS 27. Large 21.00-45.00 per head, Kids 10.00-20.00.

Holstein Dairy Cows - \$600-\$1040, one 1200 per head.

THIS WAGON



won't keep you waiting

You don't have to wait on a wagon that unloads itself. So, the Sperry New Holland automatic bale wagon is the only hay wagon your farm needs.

The automatic bale wagon can pick up bales from the field faster than a baler can make them. At the barn or stacking area, it unloads in just minutes, making tight, rigid stacks, automatically.

Best of all, one person does it all from the seat of a tractor. The bale wagon frees labor for other work and enables you to put up your hay ahead of the weather.

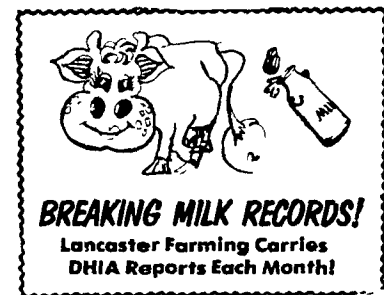
The automatic bale wagon is for farmers who want

to store hay without lifting bales. Hydraulic muscle does the lifting for you. Even the smallest model, "1003", moves over 1,300 bales from field to storage in a normal 8-hour day. A larger model, "1069", handles over 2,500 bales a day.

Some people buy automatic bale wagons just because they don't like backaches.

Ask your Sperry New Holland dealer to compare the price of a bale wagon with that of a bale thrower and three or four wagons. You'll see how affordable an automatic bale wagon can be.

SPERRY  NEW HOLLAND



Seed Beans
Available Now.

AGRIPRO™

Soybeans.

America's No. 1 Best Seller.

AGRIPRO™ AP-350
Tests prove it outyields Williams and Mitchell.

AP-350 is a welcome addition to group IV maturity. It was selected because it combines overall yield performance superiority with an excellent chlorosis rating plus resistance to Race I Phytophthora root rot and tolerance to other tested races. Plus good emergence, too. For its maturity, it would be difficult to find a better bean.

AGRIPRO AP-250

Popular Group III High yielding soybean variety. Same maturity zone as Amsoy 71, Beeson, and Woodworth, and in five years of yield trials it has consistently outyielded these popular varieties. In addition to big yields, AP-250 gives you good emergence, tolerance to tested races of phytophthora root rot and good resistance to lodging.

AGRIPRO 20

- Exclusive group II pureline variety that outyields many popular public varieties.
- Excellent standability.
- Resistance to Race 1, tolerance to Race 3 Phytophthora



THINK
AGRIPRO™

P. L. ROHRER & BRO., INC.

SMOKETOWN, PA PH: 717-299-2571