

Pa. FFA (Continued from Page A19)



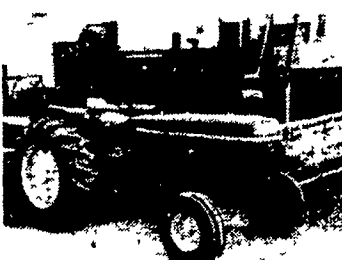
Lancaster County FFA softball winners, who repeated as champs, include, front row from the left, Scott Bailey; Mike Hershey, Cliff Horning, Duane Shelly, Jim Shenk and Kevin Martin; back row from the left, John Sweigart, Bryan Stoltzfus, Ron Groff, Lester Woodworth and Clair Witwer, advisor from Pequea Valley and coach.

- Poultry**
Nelson Horning, Eastern Lancaster County; Jim Weidman, Eastern Lancaster County; Jere Hoover, Penn Manor.
- Conservation Speaking**
Andrew Hess, Conrad Weiser; Tammy Haines, Mifflinburg; Christine Draksler, United.
- Scrapbook**
Dave Groff, Cedar Crest; Matt Pflieger, Manheim; Kathy Bert, Twin Valley.
- Gas Engines**
Joe Gingrich, Eastern Lebanon; Don Brewer, Purchase Line; Jerry Feister, Pequea Valley.
- Gas Engines, Team**
ELCO, Lebanon County; Manheim Central Lancaster County.
- Wildlife**
Nelson Ruhl and Mike Good, both of Elizabethtown; Bob Pegg and Ron McKinney, both of United.
- Tractor Driving**
Virgil Gutshall, West Perry; Dan Rode, Halifax.
- Dairy Judging, Ind.**
Jeff Martin, Ephrata; Bill Lowe, Kennard-Dale; Tracy Snyder, Tri-Valley.
- Dairy Judging, Team**
Berks County; Kennard-Dale; Ephrata.
- Livestock Judging**
Gene Gardner, Purchase Line; Peter Brummer, Juniata; Brian Hess, Penn Manor.

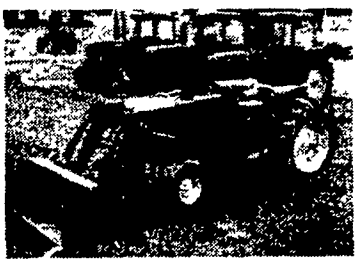


Individual Small Gas Engines winners are Joe Gingrich, Eastern Lebanon County, left, and Don Brewer, Purchase Line.

SAVE A BUNDLE ON THESE USED TRACTOR VALUES



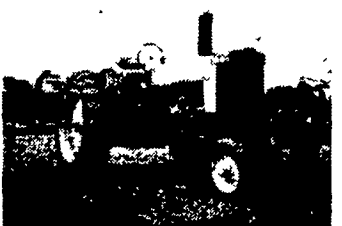
JD 2840 w/1450 hrs., 18.4x34 rears, one of a kind. . . . \$13,400



JD 2640 w/146 Loader, Hi-Lo Shift, R&P Axle, 2103 hrs. real clean . . . \$14,700



JD 720 Diesel w/3 pt. hitch, good shape



JD 620 Gas w/3 pt. hitch, good shape



JD 350 Diesel Crawler Loader w/Winch . . . \$9,500



IH 784 w/2250 Loader, 360 hrs., Like New . . . \$16,400

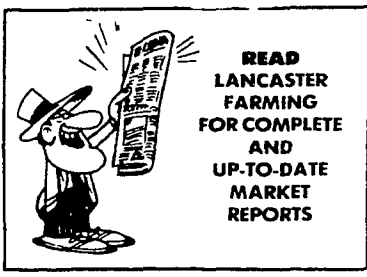
USED EQUIPMENT

- | | |
|---|---|
| Steiger Cougar Model 251 \$49,850 | IH 5 Bottom Plow \$2,850 |
| IH 1066 w/Cab \$13,950 | IH 8' Disk Harrow \$400 |
| IH 966, 2657 hrs. T.A., three point, real sharp \$12,700 | Oliver Drill \$375 |
| John Deere 4230, Sound Guard Body & Quad Range \$15,900 | John Bean Sprayer \$1,500 |
| John Deere 4010 ^{SOLD} \$7,650 | Dunham Loader \$1,950 |
| John Deere 350 Crawler Loader w/Winch \$9,500 | NI 325 2R Picker \$4,350 |
| John Deere 3300 Combine w/10' Platform \$13,750 | |
| John Deere 34 Harvester w/ one row Cornhead & Pickup Attachment \$1,550 | Coming In.... |
| IH Corn Picker \$1,075 | JD 620 Tractor w/power steering & 3 pt. |
| | JD 720 Dsl Tractor w/power steering & 3 pt. |
| | JD 1209 mower conditioner |
| | NH 469 Haybine |
| | (2) NH #8 Crop Carriers w/roofs |

THE ABOVE IS A PARTIAL LIST OF OUR USED EQUIPMENT. PLEASE GIVE US A CALL IF WHAT YOU ARE LOOKING FOR IS NOT ON THIS LIST.

EVERGREEN TRACTOR CO., INC.

30 Evergreen Rd., Lebanon, Pa. 17042 717-272-4641
 STORE HOURS
 Mon. Thru Fri. 7:30 AM-5 PM Sat. 8 AM to 12 Noon
 WE SERVICE WHAT WE SELL WITH FACTORY TRAINED MECHANICS



DIESEL FUEL PREMIUM BLEND

FUEL OIL

with Fuel Guard™ Summer Fill

Ask About Our CASH PRICE

SAVE 25% ON BULK MOTOR OIL

CALL US FOR MORE INFORMATION (717) 397-4954

AGWAY PETROLEUM FUELS • SERVICE • EQUIPMENT

Box 1197



Dillerville, Rd.

LANCASTER, PA