

Public Auction Register

Closing Date - Monday, 5:00 P.M. of each week's publication

SAT SEPT. 17 - 10 AM Public Country Auction. Located 2 mi. south of Algen on Old Rt. 41. Benefit West Fallowfield Christian School. Kurtz, Petersheim and Stoltzfus, Auctioneers.

FRI SEPT. 23 - 1:30 PM Public Auction of Cattle. Located at Penns Valley Livestock Auction, Centre Hall, PA. Ron Gilligan, Auctioneer.

FRI SEPT. 23 - 5:30 PM Gap Auction Antiques and Household Goods sold at every auction. Located off Rt. 41, Lan-

caster Turkey Hill Mint Market, cross RR bridge, Ira Stoltzfus & Son, Auctioneers.

SAT. SEPT. 24 - 11 AM Public Auction of Horses Located at Keister's Middleburg Auction Sales, Inc., Rt. 555, 3 mi east of Middleburg, PA, 5 mi. west of Selinsgrove, PA. Don and Walt Keister, Owners. Ray Long and Dave Imes, Auctioneers

FRI SEPT. 30 - 5:30 PM Gap Auction. Antiques and Household Goods sold at every auction. Located off Rt. 41, Lancaster Turkey Hill Mint Market, cross RR bridge, Ira Stoltzfus & Son, Auctioneers

Lancaster Farm, 2220 Dairy Road, Lancaster, Pa

THURS. OCT 20 - Monthly Cow Sale at Mel Kolb, Inc., Maryland Farm, Woodsboro, MD

FRI. OCT. 21 - 7 PM Public Auction of State Grade Feeder Calf. Located at Penns Valley Livestock Auction, Centre Hall, PA. Ron Gilligan, Auctioneer.

FRI. OCT. 21 - 6:30 PM. Consignment Sale of Feeder Pigs and Feeder Cattle. Held at Keister's Middleburg Auction Sales Inc., Rt. 522, 3 mi. east of Middleburg, 5 mi. west of Selinsgrove, PA.

at Penns Valley Livestock Auction, Centre Hall, PA. Ron Gilligan, Auctioneer

SAT. OCT. 29 - 11 AM Public Auction of Horses Located at Keister's Middleburg Auction Sales, Inc., Rt. 555, 3 mi. east of Middleburg, PA, 5 mi. west of Selinsgrove, PA. Don and Walt Keister, Owners. Ray Long and Dave Imes, Auctioneers

NOVEMBER

FRI. NOV. 4 - Monthly Cow Sale at Mel Kolb, Inc. Lancaster Farm, 2220 Dairy Road, Lancaster, Pa.

MON. NOV. 12 - 3 P.M. Hubert Charolais Ranch Production Sale. Located at the ranch, Monument, KS. Managed by Garey Cattle Sales, Inc., 100 Walnut Lane, Morrisville, PA 19067

THURS. NOV 17 - Monthly Cow Sale at Mel Kolb, Inc., Maryland Farm, Woodsboro, MD

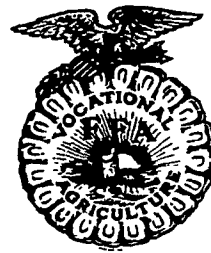
FRI. NOV. 18 - 6:30 PM. Consignment Sale of Feeder Pigs and Feeder Cattle. Held at Keister's Middleburg Auction Sales Inc., Rt. 522, 3 mi. east of Middleburg, 5 mi. west of Selinsgrove, PA.

FRI. NOV. 25 - 1:30 PM Public Auction of Cattle. Located at Penns Valley Livestock Auction, Centre Hall, PA. Ron Gilligan, Auctioneer.

SAT. NOV. 26 - 11 AM Public Auction of Horses. Located at Keister's Middleburg Auction Sales, Inc., Rt. 555, 3 mi. east of Middleburg, PA, 5 mi. west of Selinsgrove, PA. Don and Walt Keister, Owners. Ray Long and Dave Imes, Auctioneers

DECEMBER

FRI DEC 2 - Monthly Cow Sale at Mel Kolb, Inc. Lancaster Farm, 2220 Dairy Road, Lancaster, Pa



C.H. WOLGEMUTH
RD #2, MANHEIM, PA
AUCTIONEER
Member of



COMPLETE AUCTION SERVICE
CALL
717-665-5664

AUCTIONEERS
JOHN E. MARTIN

Ephrata, Penna.
717-733-3511

AND

PAUL E. MARTIN

Stevens, Penna
717-733-3305
Professional Auction Service

AUCTIONEERS

FRANK & PAUL SNYDER

Livestock, Farm Equipment, Household Goods, Antiques

No sale too small or too large
717-859-2688
717-733-7052

DEALER IN ALL KINDS OF LIVESTOCK
Also Crippled & Down Cattle

MARLIN S. IRWIN

Quarryville, PA
PH: 717-786-3016

ANNUAL SUMMER HEIFER SALE

at Green Dragon Livestock Sales
Located 1 mile north of Ephrata
TUES. JUNE 21, 1983

at 7:00 PM
APPROXIMATELY 300 HEAD
Calves, Open & Bred Heifers, Springing Heifers

Consignments consist of 20 top vaccinated heifers from Dauphin Co., 50 head from Lebanon Co. from calves to springers vaccinated, 50 head from Bob Kennedy, 25 head 2nd and 3rd calves due June, July and August, other local consignors ship in all stages and sizes.

All consignors welcome.

Walter H. Risser, Proprietor
Office 733-2444
Home 838-4318

OCTOBER

THURS. OCT. 6 - Monthly Cow Sale at Mel Kolb, Inc.

FRI. OCT. 28 - 1:30 PM Public Auction of Fall Dairy and Heifer. Located

DAIRY CATTLE SALE



FRIDAY, JUNE 24, 1983
7:00 P.M.

PENNS VALLEY LIVESTOCK AUCTION CENTRE HALL, Pa.

(At the intersection of Rt. 45 and 144)
REGISTERED & GRADE HOLSTEINS

- BULLS
- SPRINGERS
- FRESH COWS
- BRED HEIFERS
- DRY COWS
- OPEN HEIFERS

13 Head of Holstein Jersey Crossbred Heifers
Many Other Consignments From Local Farms
Health Charts Furnished
Ron Gilligan, Auctioneer

★ ★ NOTICE ★ ★

Dairy Sale Held Every Fourth Friday Of The Month
Next Sale July 22, 7:00 p.m.

For Information Call: (814) 364-9096
(814) 364-1796

JUNE IS DAIRY MONTH
FREE ICE CREAM!



COMPLETE PROFESSIONAL AUCTION SERVICE
REAL ESTATE — FARMS & RESIDENTIAL
PERSONAL PROPERTY — ANTIQUES —
FARM STOCK SALES — LIQUIDATIONS

RANDAL V. KLINE
AUCTIONEER REALTOR
717 733 1006
717 569 8701

LLOYD H. KREIDER
AUCTIONEER
717-786 3394

SPECIAL DAIRY SALE

COMPLETE HERD DISPERSAL OF J.D. KAVANAGH, JR.



140 - REGISTERED HOLSTEINS - 140

• 65 COWS - 20 with over 20,000 lbs.

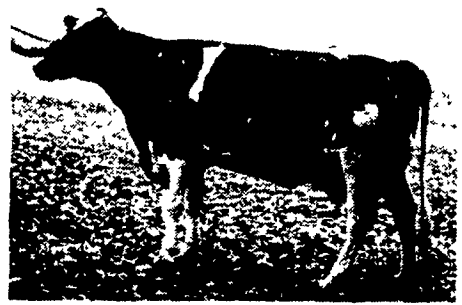
• 30 BRED HEIFERS - Top A.I. Sires and due June thru Dec.
• 50 1st & 2nd CALF HEIFERS

• 25 YEARLINGS
• 20 CALVES

RHA 18,505 3.69 Protein Test 629 Fat Cows with records to 29,000

HIGHLIGHTS OF WHAT SELLS SO-BLUE GEM STAR

2-5 336 21,660
3.27 708F



Herd Calfhood Vaccinated - Certified & Accredited
Have had Lepto & Shipping Fever Shots

Immediately following the herd, we will sell 20 head of hand picked purebred cows & heifers with excellent records & pedigrees. These cattle are young with good udders, feet and legs.

Catalogs Available at Ringside.

LUNCH AVAILABLE.

MELVIN KOLB, INC.

FRIDAY, JUNE 24, 1983
11:00 A.M.

LOCATION: At the Melvin Kolb Lancaster Farm, west of Lancaster on Dairy Road. Take Route 283 west of Lancaster, exit beyond the ABC Stud Barns at Flory Mill Road, turn left after exiting, go to Mill, then sharp right under the railroad bridge. Barn is within sight of Route 283.

DAUGHTERS OF POPULAR SIRES SELLING

- 12 JET STREAM
- 4 GLEN VALLEY STAR
- 4 WAGNERCREST IVANHOE ASTRONAUT
- 3 ELEVATION
- 2 BUBBLER
- 2 CREEK
- 2 PEACHUM
- 1 COLDSPRINGS HELIOS

SERVICE SIRES

- CARLIN-M IVANHOE BELL
- MARSHFIELD ELEVATION TONY
- WAGNERCREST IVANHOE ASTRONAUT
- BROOKFIELD FALCON

Sale Manager: **MELVIN KOLB, INC.**

2220 Dairy Road
Lancaster, PA 17601

(717) 569-6800 or 569-2106

Auctioneer: **ROBERT MULLENDORE**
Pedigrees: **WILLIAM KENT**