

# Livestock market and auction news

## Carlisle Auction

Carlisle, Pa.

Tuesday, June 14

Report supplied by auction

**CATTLE:** Steers were .75 higher for beef type and 4.00 higher for holsteins; heifers were 2.00 to 3.00 higher; Cows were 1.00 higher and bulls were 1.00 higher. Strong demand with very active bidding for all cattle. Steers: No Choice offered; Good Holstein 61.50-62.50; Standard 55.00-58.25; Holsteins 56.00-57.25; Utility 55.75 down. Heifers: No Choice offered; Good 56.25-59.50; Standard 52.00-55.50; Utility 51.00 down. Cows: Very active bidding; Utility & Commercial 46.00-50.00; Cutter 44.00-46.25; Canner & Low Cutter 42.75-45.00; Shells 41.00 down. Bulls: Yield Grade No. 1 58.25-58.60; Yield Grade No. 2 individual at 49.75.

**FEEDER CATTLE:** Light run of steers; Heifers were 1.00 higher; Bulls were steady. Steers: Good 180 lbs. 62.00; Medium-Utility 48.00; Medium 565-685 lbs. 50.00-51.00. Heifers: Choice 280-330 lbs. 67.50-69.00; Good 290-350 lbs. 57.00-62.00; Medium 265-475 lbs. 48.00-50.00; Good 575-615 lbs. 54.00-60.00; Utility-Medium 685-715 lbs. 39.00-48.00.

**CALVES:** Vealers were 7.50 lower and back to the farm calves were 3.00 lower for Hol. Bulls and 8.00 lower for Hol. Heifers. Vealers: Choice 80.00-90.00; Good 65.00-85.00; Standard & Good 55.00-65.00; Standard & Light 55.00 down. Farm Calves: Hol. Bulls 85.00-100.00; Hol. Heifers 75.00-95.00.

**HOGS:** Active .75 higher! No. 1-2 48.60-49.85 No. 1-3 46.00-49.00; No. 2-3 41.25-45.00. Sows: Steady; No. 1-3 35.00-39.00; No. 2-3 33.25-34.00. Boars: 3.00 lower; 33.75-34.75.

**FEEDER PIGS:** No. 1-3 20-26 lbs. 16.00-22.00 head; No. 1 30-33 lbs. 25.00-28.00 head.

**SHEEP:** Lambs: Good 57.50-62.50; Medium 51.00-53.00; Utility 45.00-49.00. Ewes: 15.00-24.00. Goats: 16.00-42.00 head.

Sale evening every Tues. 7:00 P.M. Eggs, Poultry & Rabbits.

## Westminster Livestock Auction

Westminster, Md.

Tuesday, June 14

Report supplied by auction

**BUTCHER COWS:** Active bidding, 1.00 higher! High Yield 48.50-50.00, one to 53.00; Standard & Utility 44.00-48.50. Canners-41.00-45.00. Shelly-41.00 down. Slaughter Bulls- High Yield to 56.75; Good Light Wghts to 53.25. Fed Steers- Choice to 62.50; Good 58.00-60.00; Holsteins 55.00-57.00. Fed Heifers- Few good to 54.00; Commercial 49.00-52.00.

**BUTCHER HOGS:** .50 lower. US #1&2- 215-240 lb. 46.50-47.10. US 2&3- 42.75-44.00. US 1&3- 195-210 lb. 44.00-45.74; 300-360 lb. 37.00-38.25. Sows- 350-475 lb. 35.75-36.75. Boars- 500-650 lb. 34.25-34.75.

**VEAL CALVES:** Big Calves lower, light weights steady. Good & Low Choice 79.00-83.00; Standard 60.00-70.00; Stocky & Thin 50.00-60.00; Killers 80-100 lb. 60.00-70.00; Weak & Rough 59.00 down

**CALVES RETURNED TO FARM:** Holstein Heifers 20.00 lower. 95-115 lb. 70.00-80.00; Holstein Bulls 95.00-120 lb. 85.00-98.00; Beef Type 80-110 lb. 75.00-83.00.

**LAMBS:** Choice 95-100 lb. 56.00-58.00; 60-90 lb. 49.00-51.00; Sheep 19.00-29.00.

**GOATS:** 26.00-48.00, few 50.00-57.00. Kid Goats- 12.00-22.00, one to 31.00.

**STOCK CATTLE:** Steers- 200-300 lb. to 78.50; 300-500 lb. 69.00-72.00; 500-700 lb. (Holsteins) 55.00-57.50. Heifers- 5.00 lower; 300-600 lb. 43.00-50.00. Bulls- 200-300 lb. 52.00-67.00; 500-700 lb. 49.00-54.00.

**PIGS AND SHOATS:** 3.00 lower. By the head 15-30 lb. 12.00-26.00, 30-50 lb. 29.00-37.00.

## PENNSYLVANIA MARKETS

## Weekly Summary

Friday, June 17

Report supplied by PDA

**CATTLE:** 6897. Compared with 8954 head last week, and 7030 head a year ago. Compared with last week's market: Slaughter steers 1.00-1.50 lower; Sl. heifers .50-1.00

lower; Sl. cows steady to 1.00 higher; Sl. bullocks & bulls unevenly steady. Sl. steers: High Choice & Prime 64.50-68.00; Choice 62.00-66.10; Good 57.00-63.00; Standard 51.00-59.00. Sl. heifers: Choice 59.00-62.75; Good 54.00-59.00; Standard 50.00-56.00. Sl.

cows: Utility & Commercial 46.00-51.50; Cutters 43.00-47.00; Canner & L. Cutter 36.00-45.00; Shells down to 26.00. Sl. bullocks: Choice 59.00-62.00; Good 56.00-59.00. Sl. bulls: Yield Grade No. 1, 1200-2100 lbs.

(Turn to Page A17)

## Wickes Lumber

# YOUR ONE STOP FOR FARM BUILDING MATERIALS



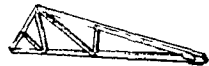
### TREATED TIMBERS

The perfect choice for farm buildings! Economical treated boards can be stained, painted or allowed to weather naturally. Durable... creates a safeguard against termite damage and decay.

	10'	12'	14'	16'	18'	20'	22'	24'	26'
4x6	\$8.59	\$10.99	\$11.99	\$14.24	\$18.49	\$20.59	\$23.10	\$25.79	—
6x6	—	\$16.25	\$18.80	\$22.10	\$28.07	\$31.25	\$37.95	\$42.35	\$56.29

*Versatility Plus Long-Lasting Protection!*

### FARM TRUSSES



Progressive farm owners save time and money by using our top-quality trusses. Delivery is made right to the job site... and our trusses are pre-engineered to meet your exact needs.

- 24'...4/12 pitch...4' O.C...32 lb. total load **\$28.49** each
- 30'...4/12 pitch...4' O.C...32 lb. total load **\$42.19** each
- 40'...4/12 pitch...4' O.C...32 lb. total load **\$78.99** each

### 40% OFF All Green & Brown Vinyl Shutters In Stock

#### Solid Core Storm Doors

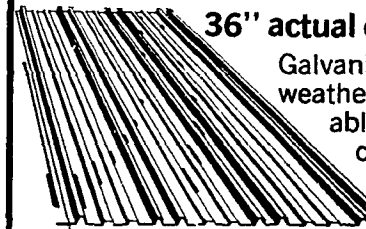
- 32"x36" Self Storing White 124.95 .... **104.95**
- 32"x36" Crossbuck White . 134.95 .... **114.95**

Ask About Extra Savings On Misordered Crestline Windows In Stock

### STEEL ROOFING & SIDING

PRICES GOOD THRU JULY 2nd

36" actual coverage



Galvanized finish is corrosion and weather-resistant. Lengths available to fit most of your farm construction needs.

	8'	10'	12'	14'	16'
Galvanized	\$9.30	\$11.65	\$13.95	\$16.35	\$18.99
Galvalum	\$11.29	\$14.09	\$16.99	\$19.79	\$22.59
Painted (White, Red, Brown)	\$11.98	\$14.98	\$17.98	\$20.97	\$23.97

### 3 1/2"x5"x8' TREATED FENCE POSTS/ LANDSCAPE TIMBERS

**\$3.49** ea.

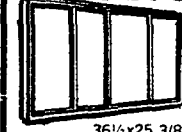
### 6"x6"x8' CREOSOTE-DIPPED TIMBERS

**\$6.99** ea.

### INSULATION SPECIALS

- 1/2" 4x8 Foil, 2 Sides. .... **\$6.74** sheet
- 1 1/2" 4x8 Styrofoam ..... **12.99** sheet

### PLYCO FARM & UTILITY WINDOW



For garages and utility buildings  
Energy saving warm plastic frames

- 36"x25" ..... **\$29.99**
- 44"x25" ..... **\$31.99**

## CLEARANCE MATERIAL

- |   | Reg.     | SALE            |
|---|----------|-----------------|
| • (1) ea. Fireplace Insert ...                            | \$624.99 | <b>\$375.00</b> |
| • (1) ea. 8x8 Fiberglass Garage Door, Heavy Duty .....    | 356.00   | <b>199.00</b>   |
| • (47) ea. 5 Shelf Metal Storage Shelving .....           | 11.88    | <b>10.35</b>    |
| • (51) pcs. 12"x16" Triple 4 Hardboard Country Siding ... | 8.07     | <b>4.99</b>     |

- |                                     | Reg. | SALE            |
|-------------------------------------|------|-----------------|
| • (42) pc. 2x6 12' Hem./Fir. ....   | 4.81 | <b>3.99</b>     |
| • (100) pc. 2x6 10' Spruce #3. .... |      | <b>2.79</b> ea. |
| • Premitered F.J. Casing Sets. . .  | 8.01 | <b>4.97</b>     |

### 20% OFF All Stock Metal Closet Shelving With Closet Rods

- (49) pcs. 2x8 8' Treated T&G . 5.01 ..... **4.26**

### Steel Gutter Accessories Only 60% OFF Regular Price

#### 29 Gauge Tan Steel

- |                         | Reg.  | SALE         |
|-------------------------|-------|--------------|
| 10 pcs... 38"x10' ..... | 16.20 | <b>14.25</b> |
| 30 pcs... 38"x12' ..... | 19.40 | <b>17.07</b> |
| 40 pcs... 38"x14' ..... | 22.60 | <b>19.89</b> |

## Wickes Lumber... Your Best Choice!

Prices good at the following location only:

1 1/4 Mile North East of EPHRATA, PA. on Rt. 272  
PH: 717-733-6521 or Lanc. 717-394-9325

Hours: Mon., Thurs., Fri. 8 AM to 8 PM;  
Tues. & Wed. 8 AM to 6 PM; Sat. 8 AM to 3 PM

