



## Blair County DHIA Monthly Report

April 1983

The twenty high herds for the month of April are listed as follows

Owner	NO. COWS	% DAYS IN MILK	LBS. MILK	LBS. FAT
James Smith	37.6	93.5	20,628	739
Marcove Farm	68.2	84.0	18,895	721
Thomas W. Kelly	64.7	86.9	19,318	720
Penn-England	86.3	86.0	18,072	712
G.W. & R.G. Baker	72.1	90.1	19,210	711
Gerald Burket	98.6	85.5	20,749	711
Charles & Mike Hoover	95.3	88.0	19,411	704
Clover Will Farms	142.5	88.5	19,581	704
Dawn Baker	105.8	86.5	18,392	690
Dale W. Hoover	36.0	87.7	18,406	688
Dennis A. Smith	47.6	88.6	18,692	687
Richard R. Fox & Sons	42.6	85.3	17,887	683
Raymond Diebold	35.0	89.7	19,213	683
Blackcrest Farms	68.6	88.2	18,176	681
William R. England	154.1	89.3	18,517	680
Smith Hollow Farms	100.7	85.9	18,516	676
Lar Ann Farm	113.1	85.0	18,483	676
Over Lane Farms	64.6	87.5	17,737	674
Burket Falls Farms	83.6	90.7	17,828	674

Mil-Ber Farms 96.6 90.2 20,646 671  
W. Dean Stern 68.7 90.9 18,694 671

The high cow for the month is a grade Holstein in the Dean Stern herd Cow #Y75 produced 21,679 pounds of milk and 943 pounds of butterfat in 305 days at 5 years 9 months. Individual cow records of 305 days or less over 750 pounds butterfat.

OWNER NAME OR NUMBER BRD	AGE	LBS. MILK	% FAT	LBS. FAT
G.W. & R.G. Baker 134 GH	8-7	22,762	3.5	798
Curryview Farms Rosena RH	4-10	18,771	4.0	757
Rich Lou Farms Promise RH	6-11	25,186	3.6	911
118 GH	3-8	21,266	4.3	910
Rosy RH	4-2	26,247	3.5	915
Dale W Hoover K'n RH	5-6	23,070	3.5	801
Clover Will Farms 27A RH	5-8	23,517	4.0	940
73B RH	3-6	19,554	4.0	775
Marcove Farm Julene RH	7-11	21,655	3.8	814
Agnus RH	2-10	19,272	4.2	811
Jo RH	3-2	23,235	3.4	784
Emile Dilling 78 RH	7-3	19,617	4.0	791
122 RH	5-8	23,034	3.8	874
131 RH	5-3	20,142	4.6	933
196 RH	3-4	18,166	4.2	759
Gerald Burket Quest RH	6-3	22,541	3.6	814
184 GH	4-3	24,122	3.3	797
202 GH	4-7	25,585	2.9	750
239 GH	3-0	23,175	3.3	765
Fred Bechtel Blossom RH	4-1	21,477	3.7	798
Sheldon Fieck Dawn GH	3-11	19,576	3.9	765
Richard R. Fox & Sons Blackie GH	6-7	22,050	4.0	891
Carrie RH	4-5	19,102	4.1	776

C. Eugene Smith Beauty RH	7-11	21,426	4.2	896
W. Dean Stern Y 75 GH	5-9	21,679	4.3	943
Jay Metzker Wendy RH	5-10	19,141	3.9	756
William R England Janet RH	5-8	19,599	3.9	773
Donald G Hoover Leslie RH	9-1	21,071	3.7	786
Dot RH	7-5	19,123	4.4	839
Sis GH		23,655	3.5	836
249 RH	4-5	22,318	4.1	922
Supreme RH	3-3	21,015	3.7	772
Aldon-Acres Buffy RH	4-6	18,831	4.1	772
Dawn Baker 234 GH	7-8	18,095	4.4	800
Thomas W Kelly Iris RH	8-6	19,575	4.6	903
Cherry RH	5-5	22,230	3.6	800
Betsy RH	4-5	25,828	3.6	923
Mandy RH	3-4	22,828	3.4	776
Bessie RH	2-2	18,846	4.1	781
Raymond Diebold Amy C GH	3-5	20,384	3.8	777
D. & R. Sollenberger 22 RH	4-11	20,440	3.7	759
Cross Country Farms 170 GH	4-8	19,596	4.0	793
Charles & Mike Hoover Ivy RH	7-2	28,055	2.9	810
Ivory RH	3-5	25,693	3.3	855
Birdie GH	3-3	19,532	4.0	789
Sparkling Springs Fm 120 GH	7-1	20,161	3.8	768
Revere Smith Billy Jo GH	6-5	20,717	3.7	771
Sollenberger Farms 24 GH	3-4	18,896	4.3	819
Penn-England Joy RH	4-10	19,220	4.1	779
Clair S. Hursh 58 GH	4-8	18,529	4.4	811

## Cowtown Rodeo

NOW THRU SEPT. 3rd

Cowtown, N.J.

"Cow Capital of the First Frontier"

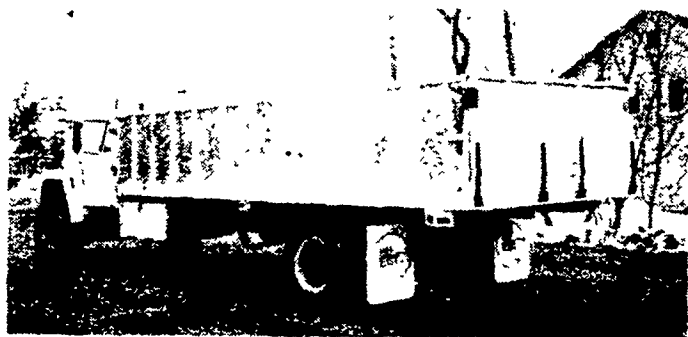


Located on U.S. Route 40, eight miles east of The Delaware Memorial Bridge in Salem County.

Every Saturday Night\*\*7:30 Rain or Shine  
(Admission \*4 Adults)\*\*(\*2 Children 12 and under)  
Free Parking\*\*\*Refreshment Stands  
Group Rates Available: Call 609-769-3200



Manufacturer of  
**ALL ALUMINUM TRUCK BODIES**  
Livestock, Grain  
and Bulk Feed



Aluminum Grain Body

Distributor of **TIMPT** Refrigerated Trailers  
Sales & Service  
Blue Ball, Pa. 717-354-4971

## AG-BAG PRODUCTS CO.

234 Johnstons Lane  
Mercersburg, PA 17236

Phone (717) 328-3177

3 Models of Ag-Bag Machines

AG Manure Spreader

AG Wagon Mix

AG Auger Mix

AG Live Floor 7'2"x18'

Mighty Bite 1/2 to 3 Yd. Sizes

Proven Bags for Best FEED

AG-BAGS 9'x135' & 8'x95'

3 ply Bale Bags 4' & 5'

EXPECTED 2 YEAR LIFE

Also CUSTOM BAGGING

"PA. AGRICULTURE -  
WE'RE GROWING BETTER"

ICE CREAM

Use your own label

1/2 gallon & bulk

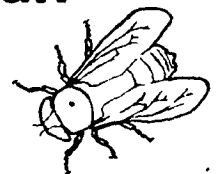
**ELIZABETHTOWN  
CREAMERY CO., INC.**

Rear 519 S. Market St.  
Elizabethtown, PA 17022

717-367-1389

## Flies are a problem!

Fogging, larvicides and spreading chemicals around the barn can only offer you a temporary solution...



An automatic fly control system from **COASTAL FLY CONTROL** takes care of flies all season long, automatically. None of your valuable time is involved.



We also install and service your system!

Call us today before the spring rush!

**COASTAL FLY CONTROL**



RD 2 Box 281  
Conestoga, PA 17516



717-285-3979

717-872-8358