

Angie Brant wears Somerset dairy crown



Angie Brant, center, was crowned the new Somerset County Dairy princess recently. With her is Alternate Betsy Will, left, and Nancy Berkley, last year's princess.

SHANKSVILLE — Angie Brant, 17, daughter of Mr. and Mrs. James R. Brant of R.1, Berlin, was crowned the Somerset County Dairy Princess at Hidden Valley Resort. Six contestants competed for the title this year.

A junior at Shanksville-Stoneycreek High School, Angie is enrolled at the Somerset County Vo-Tech School in the medical assistant course. She lives with her parents on a 230-acre dairy farm. She is a nine-year member of the Brotherton Belles 4-H Club.

As part of the evening activities following a buffet dinner, the contestants each presented an original skit. Angie's presentation was entitled "Little Farm Girl" in which she used a life-size replica of a cow named "Clarabelle" to show

the many products derived from milk.

Chosen as the Alternate was Betsy Will of R.1, Berlin. The daughter of Mr. and Mrs. Calvin Will who operate North View Farm, Betsy is a senior at Berlin-Brothersvalley High School where she is enrolled in the business course.

Jennifer Snyder of R.5, Somerset, was voted by the contestants to receive the Miss Congeniality award. Jennifer is the daughter of Mr. and Mrs. Arthur Snyder and is a senior at Somerset Area High School.

The other contestants were Diane Waltemire, daughter of Mr. and Mrs. Ben Waltemire of R.1, Rockwood; LeAnn Knepper, daughter of Mr. and Mrs. Clifford Knepper of R.4, Somerset; and Susan Gail Bittner, daughter of Leroy and Gloria Bittner of R.4, Meyersdale.

The new princess was crowned by last year's Somerset County Dairy Princess, Nancy Berkley. Nancy, the daughter of Lewis and Barbara Berkley of R.2, Berlin, is a senior at Berlin-Brothersvalley High School. She will be a freshman at Penn State University this fall.

The Somerset County Dairy Promotion Committee is co-chaired this year by Sharon Fox and Carol Kimmel.

Life of 'firsts'

(Continued from Page B22)

building help deepen the new sense of maturity that Jolene's parents feel they can see in her.

Because of the demands of the princess job, which included at least one official meeting or appearance almost every week, there have been times when the pressure on her time seemed to come from all directions.

"You have to set your priorities, or you can get lost in what you're doing," she warns. "Mom and Dad have really helped me, and I've enjoyed it; it's something that you really have to want to do."

While the schedule has been hectic so far, no experience has been an unhappy one, although there have been a few more memorable moments.

Like the day just recently when her car engine simply quit while she was on her way to a meeting, leaving the princess to trudge to a farm nearby for help.

Or the instance, during one of the four visits she made to dairy conventions being held in Syracuse, New York, when fire engines pulled up in front of the hotel. While the call proved to be a false alarm, she and coordinator Sue Beshore admit they shared a few concerned minutes until they learned of the prank.

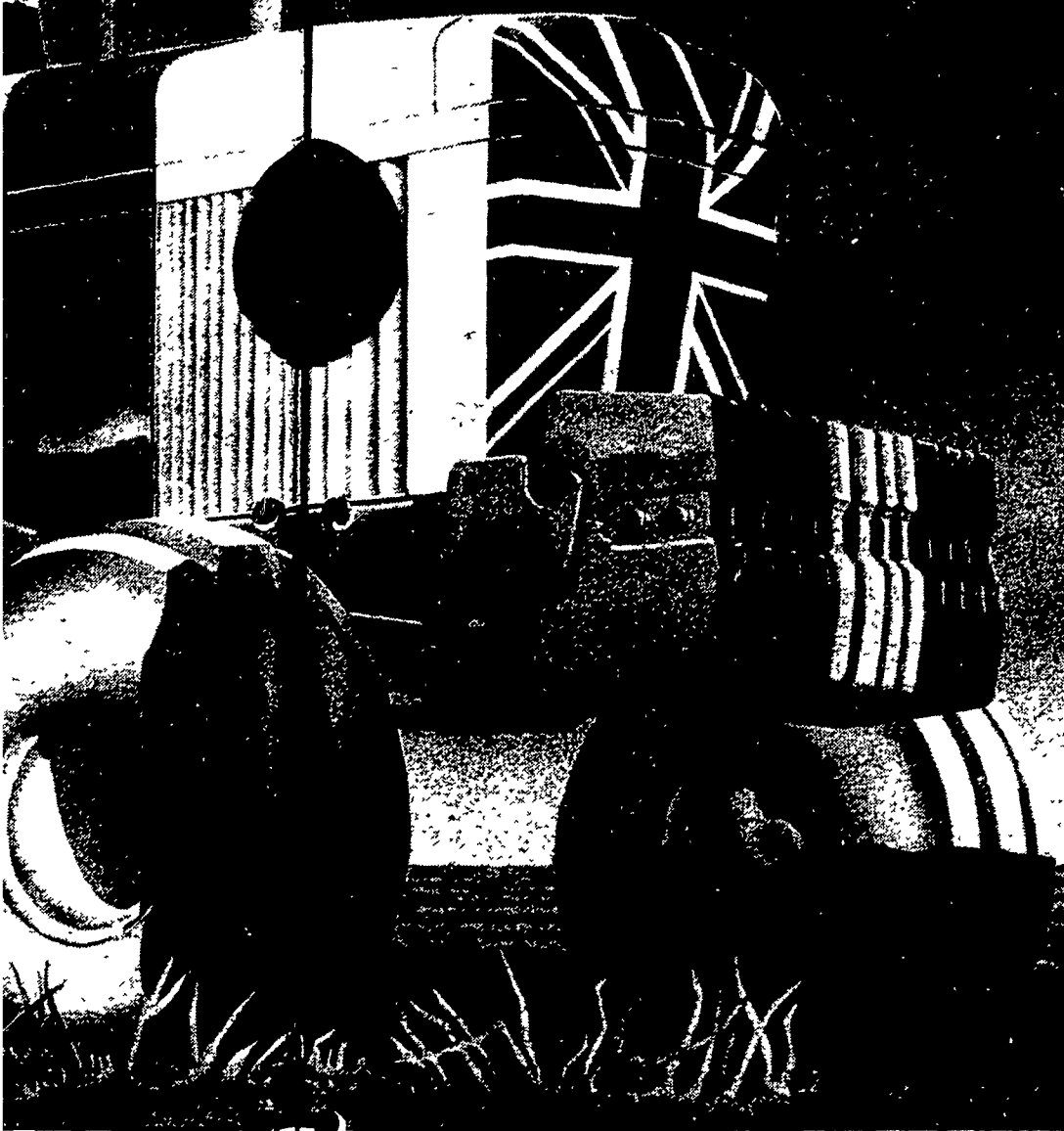
In appreciation of the job that Jolene has done representing the dairy industry, her home Beaver-Lawrence dairy promotion committee hosted a community square dance in her honor on May 7, at the local Grange hall.

Over one hundred guests turned out to swing their partners, meet the candidates for the local pageant in June, toast their state princess with milk punch refreshments and present her with a thank-you diamond ring engraved with her initial.

"I'd like to say 'thank you' to everyone for their continued support of my work and of the dairy princess program," says Jolene. "The people of Pennsylvania have really been supportive and have always warmly welcomed me everywhere I went."

is busier than are the silver cow on slate, banner.

the U.S.A.....
and Japan... and
West Germany... and
France... and Belgium...
and Poland... and
Romania... and
Hungary... and England...



Too many "U.S. Built" tractors have become hybrids, assembled from components produced by unrelated firms in many countries. Suppliers of engines, transmissions, hydraulic systems, or other vital components can be changed from model to model. That can spell, t-r-o-u-b-l-e, delay and confusion when replacement parts are needed a year or two down the road (when the buck is passed, it shouldn't be your buck!).

SAME is different!

Every SAME tractor and all major components are designed, engineered, manufactured, assembled, rigidly inspected and tested in our factory, which makes only agricultural tractors and engines for world markets. SAME doesn't design and build to accommodate off-the-shelf components.

SAME...made in Italy by SAME, the world's 6th largest producer of agricultural tractors.* SAME...acclaimed worldwide as the leading air-cooled direct-injection 4WD diesel tractor with superior fuel efficiency, unmatched power and traction, minimal maintenance costs, fast accurate parts availability and a 2-year/3000 hours limited warranty that's second to none.

Your SAME dealer can show you a full range of 4WD and 2WD tractors in the 45 to 160 hp range (including a powerful new 85 hp high-clearance Row Crop model). See him or contact us for literature and name of dealer nearest you.

There's a "pure-bred" SAME ready for you—don't settle for a "hybrid."

*50 hp and up, produced in free world

S & L Tractors of North America, Inc.
Dept. L, P.O. Box 6865
Bridgewater, NJ 08807
(201) 560-9350



Move ahead with SAME

SAME

S SALES & SERVICE
12, PA (412)465-8889
IL E. JACKSON INC.
Jale, PA (814)634-0314

PEOPLE'S SUPPLY INC.
Charles Town, WV (304)725-8454
RINEHIMER & SONS
Berwick, PA (717)752-7131

GEORGE SEIPLE & SON CO.
Easton, PA (215)258-7146
SHIPULA TRACTOR SERVICE
Transfer, PA (412)646-1900

SHINNS TRACTOR SALES, INC.
Leon, WV (304)458-1630
SOLLENBERG EQUIPMENT CO.
Everett, PA (814)652-5223

STOUFFER BROTHERS INC.
Chambersburg, PA (717)263-8424