



HAY MARKETS

New Holland Hay

New Holland Sales Stables
Monday, May 30
Report supplied by auction
78 loads.
Mixed 45.00-160.00; Timothy 71.00-100.00; Alfalfa 43.00-150.00; Straw 60.00-107.00; Corn 101.00-108.00; Shavings 2.50 bag; Barley 10.00 bu.; Oats 2.25 & 2.95 bu.

Good's Hay

Leola, Pa.
Wednesday, June 1
Report supplied by auction
111 loads.
Mixed 81.00-101.00; Alfalfa 46.00-149.00; two new Alfalfa 20.00 & 30.00; Straw 71.00-121.00; Corn 91.00-107.00; Timothy 74.00-126.00; one grass 44.00; one Clover 52.00; one Stubble Hay 58.00; Oats 2.05 bu.

Kiester's Hay

Middleburg, Pa.
Tuesday, May 31
Report supplied by auction
20 loads of hay: Timothy 67.50-73.00; Mixed 60.00-110.00; Alfalfa 155.00-165.00; Straw 65.00-73.00; Oats 2.00 bu.

Frederick Co. Hay

Buckeytown, Md.
Thursday, June 2
Report supplied by auction
Small run; market strong; 9 loads.
Alfalfa 82.00-130.00, one dark 55.00; Timothy 85.00; Mixed 91.00-106.00; Straw 103.00-108.00
Auction this Thursday, June 9, will be last of season until reopening Oct. 6.

Leinbach's Hay

Shippensburg, Pa.
Tuesday, May 31
Report supplied by auction
27 loads.
Alfalfa 60.00-95.00; Mixed 57.50-75.00; Clover 58.00; Timothy 50.00-54.00; Straw 62.00-75.00; Ear Corn 111.00.

Dewart Hay

Dewart, Pa.
Thursday, May 23
Report supplied by PDA
12 loads Hay and 5 loads Straw.
Mixed hay 41.00-70.00, one load 89.00; Straw 41.00-55.00.

Regional Hay

Friday, May 27
Report supplied by PDA
Hay and Straw steady to 10.00 lower.
Alfalfa 80.00-110.00, few 125.00; Mixed hay 60.00-90.00; Timothy hay 60.00-90.00; Straw 50.00-80.00; Mulch 30.00-45.00.

Green Dragon Hay

Ephrata, Pa.
Friday, May 27
Report supplied by PDA
77 loads Hay and 29 loads Straw.
Alfalfa 60.00-141.00, mostly 74.00-120.00; Mixed hay 55.00-117.00, one load 130.00; Timothy hay 74.00-1160.00, one load 62.00; Orchard Grass, one load 79.00; Straw 81.00-108.00; Ear Corn, 14 loads 99.00-107.00, few down to 81.00.

Belleville Hay

Belleville, Pa.
Wednesday, May 25
Report supplied by PDA
24 loads Hay and 2 loads Straw.
Alfalfa, few 67.50-125.00; Mixed hay 40.00-135.00, mostly 51.00-87.50; Straw, 2 loads 72.00 & 74.00.

Pa. Grain

Tuesday, May 31
Report supplied by PDA
Compared with last Monday's market for Southeastern, Central and South Central Pa.: Corn steady to 10 cents higher; Wheat & Ear Corn uneven, mostly steady to strong; Barley & Oats steady to weak.
Prices paid delivered to dealers dock - (All prices per bushel, except Ear Corn per ton.)
Southeastern Pa.
Corn No. 2-y range 3.30-3.55,

average 3.44, New Crop 2.80-2.92; Wheat No. 2 range 3.40-3.70, average 3.51, New Crop 3.45-3.47; Barley No. 3 range 2.00-2.35, average 2.18, New Crop 1.85-2.00; Oats No. 2 range 1.80-1.85; average 1.84; Soybeans No. 1 range 5.84-6.00, average 5.91, New Crop 5.85-5.90; Grain Sorghum #2 range 2.70, average 2.70; Ear Corn range 90.00-95.00, average 93.18.

Central Pa.

Corn No. 2-y range 3.20-3.50, average 3.39; Wheat No. 2 range 3.25-3.50, average 3.39; Barley No. 3 range 1.85-2.00, few reported 2.15, average 2.01; Oats No. 2 range 1.55-1.80, average 1.72; Soybeans No. 1 few reported 5.55, average 5.55; Grain Sorghum #2 2.90; Ear Corn range 85.00-95.00, average 89.58.

South Central Pa.

Corn No. 2-y range 3.10-3.50, average 3.30; Wheat No. 2 range few reported 2.90-3.40, average 3.08; Barley No. 3 range 1.80-2.00, average 1.88; Oats No. 2 range 1.70-1.95, average 1.82; Ear Corn range 85.00-100.00, average 91.88.

Southeastern, Central & South Central Summary

Corn No. 2-y range 3.20-3.50, average 3.40; Wheat No. 2 range 3.25-3.70, average 3.38; Barley No. 3 range 1.85-2.35, average 2.04; Oats No. 2 range 1.60-1.85, average 1.77; Ear Corn range 85.00-96.00, average 91.45.

Western Pa.

Corn No. 2-y range 3.12-3.30, average 3.18; Wheat No. 2 range 3.00-3.20, average 3.10; Barley No. 3 range 1.85-1.95, average 1.90; Oats No. 2 range 1.60-1.75, average 1.66; Ear Corn range 80.00-83.00, average 81.00.

Lebanon Valley Auction

Fredericksburg, Pa.
Tuesday, May 31
Report Supplied By PDA
CATTLE 210. Compared with

last Tuesday's market, slaughter steers steady to \$1 lower. Slaughter cows weak to \$2 lower. Few High Choice & Prime 3-4 1145-1360 lbs. slaughter steers 65.60-66.85, Choice 2-4 1025-1385 lbs. 64.00-66.50; Good & Choice holsteins 57.35-62.10; Good 60.10-63.85, few Standard 55.50-59.75. Few Choice slaughter heifers 58.00-60.75, individual 63.10, few Good 54.75-58.60, few Standard 51.50-54.75. Utility & Commercial slaughter cows 44.35-47.50, few 48.75, one 50.25, Cutters 41.50-44.75, Canner & Low Cutters 38.00-42.75, Shells down to 30.50. Few Good slaughter bullocks 55.10-57.50, individual Standard at 53.75. Individual Yield Grade #1 1395-1490 lbs. slaughter bulls 55.25&55.50.

CALVES 165. Vealers unevenly steady. Choice vealers 92.00-104, Good 76.00-89.00, Standard & Good 90-115 lbs. 70.00-78.00, 60-90 lbs. 65.00-68.00, few Utility 50-70 lbs 60.00-64.00. Farm Calves: Holstein Bulls 90-125 lbs. 82.00-106, mostly 92.00-106, few 70-85 lbs. 72.00-80. Holstein Heifers 85-135 lbs. 71.00-121, mostly 100.00-106.00.

HOGS 160. Barrows and gilts steady to 75 cents lower. US No. 1-2 215-240 lbs. barrows and gilts 47.00-47.50, No. 1-3 225-285 lbs. 46.85-47.60, lot No. 2-3 288 lbs. at 46.00, few No. 1-3 195-200 lbs. 45.00-46.10. Sows fully \$1 lower. US No. 1-3 355-490 lbs. sows 37.75-39.75, No. 2-3 325-500 lbs. 32.25-37.00, few Medium 220-435 lbs. 31.50-33.75. Few Boars 34.50-35.00.

FEEDER PIGS 7. Not enough of any one grade to establish a market.

SHEEP 9. Few choice 100-135 lbs. old crop lambs 41.00-51.00, two Good & Choice 55&70 lbs. 59.00&60.00. Two Slaughter ewes 13.00&14.00. Goats 2: Kids 27.00&29 per head.

NEW HOLLAND SALES STABLES, INC. - THE ACTION AUCTION

MONDAY



EARLY BIRD HOG SALE
For Your Protection Your Hogs Must Be Identified

10:00 AM



11:00 AM



**HAY
STRAW
GRAIN**

**1:30 PM
BEEF SALE
CALF, SHEEP,
GOATS**



WEDNESDAY

12:00 NOON



HEIFERS, BULLS

NEW HOLLAND SALES STABLES, Inc.

12 Miles East of Lancaster
on Route 23, New Holland, Penna

**The Action Auction
717-354-4341**

Mgr. - Abe Diffenbach - 717-393-4464
Norman Kolb - 717-397-5538

Field Representatives
Alan Diffenbach 717-656-9806
Luke Eberly 215-267-6608 - 738-1865

**WEDNESDAY
FEEDER PIG SALE
1:30 P.M.**



We endeavor to keep our barns cleaner than yours.
State graded until 12 Noon

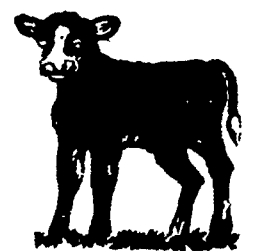
THURSDAY

11:00 AM



3:30 P.M.

CALVES



**SHEEP
GOATS**



**Market your livestock thru New Holland Sales, your neighbor does
Pick-up your check before you leave**