

DAIRY FEEDING TIPS

Head Start Program For Calves

For dairymen, young calves represent their future profit potential. That's because genetic improvements have assured that each generation of dairy cattle is more productive than the one before. But even the highest pedigree dairy calves need good nutritional management to get off to a good start in life.

For the first few weeks after birth, dairy calves should receive a liquid diet of either whole milk or a high quality milk replacer. Weaning from this liquid ration at four to six weeks is a critical time for calves. Proper composition of the dry starter feed can help ease the transition.

Sodium bicarbonate is one ingredient in starter rations that can assist calves through weaning, by improving feed intake and increasing weight gains. Bicarb is a natural component of saliva.

"A young calf has undeveloped salivary glands and secretes less saliva per pound of body weight than does a full-grown cow," explains Dr. Larry Muller, Pennsylvania State University dairy science professor. "When a calf is fed limited fiber and forage, there

is even less saliva produced, so there is less natural buffering."

Sodium bicarbonate therefore supplements the buffering effect of saliva, especially when calves are fed inadequate fiber and ground or pelleted starter rations.

Although results have been inconsistent, Penn State experiments have shown trends toward greater feed intake and weight gains with bicarb added to calf starter feeds, particularly around the time of weaning. Earlier tests conducted in Australia reported more dramatic improvements in consumption and gain. Research suggests that the optimum bicarb level is 1 to 3 percent of the total ration dry matter, Dr. Muller said.

"The most practical application of feeding sodium bicarbonate to dairy calves appears to be at the time of weaning through two weeks after weaning," he concludes. "Bicarb appears to help calves get on the starter feed sooner and may help alleviate the stress of weaning. The result should be an improvement in feed intake and growth."

SYRACUSE, N.Y. — Dairy products from the milk of nearly 10,000 northeast dairy farms was used in feeding over 5,000 reporters from around the world covering the 1983 Economic Summit of Industrialized Nations held in Williamsburg, Va., Memorial Day weekend, May 27-31, according to a joint announcement by the northeast's three largest dairy cooperatives. DairyLea, Eastern and NEDCO.

The three cooperatives joined by over 200 other dairy cooperatives making up the National Milk Producers Federation provided the press with 13 meals over the course of a five-day Summit. Through the Federation, the cooperatives contributed several hundred pounds of milk and milk-based products such as cream, cottage cheese, natural and process cheese, yogurt, ice cream and butter.

The reporters were covering eight heads of state at the Summit meetings centered around sustaining an economic recovery among the attending nations. International debt, the dollar's strength and energy issues were among items discussed.

The food service was provided by converting eight tennis courts into a giant cafeteria. The courts

were covered with circus-size tents, carpeted, decorated with plants and spotted carousels of sandwiches, hot foods, salads, wine, milk and dairy products.

William and Mary Hall, part of the overall William and Mary College complex was also converted to accommodate the Summit meetings.

It became the press center with about 600 telephones, 25 miles of cable, typewriters, telex machines, computer terminals and new central air conditioning and

much more.

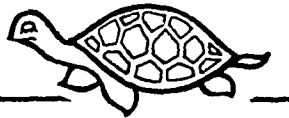
Participants in the Summit discussions were: Ronald Reagan, President, United States; Margaret Thatcher, Prime Minister, Great Britain; Pierre Trudeau, Prime Minister, Canada; Francois Mitterand, President, France; Helmut Kohl, Chancellor, West Germany; Amintore Fanfani, Prime Minister, Italy; Yasuhiro Nakasone, Prime Minister, Japan; Gaston Thorn, President, European Economic Community.

CECIL CO. DHIA April Report

Following are the top ten herds for April 1983 in Cecil County participating in the DHI program. These results are based on a Fat Corrected Milk basis FCM. Allow the comparison of milk production records, varying widely in percentage of butterfat and thus differing in energy values

| | | | | |
|---------------------------|-----|------|------|------|
| Wm F Schrader | 88 | 50.2 | 1.96 | 53.5 |
| C E David | 126 | 52.6 | 1.87 | 53.1 |
| Albeck Farms Inc | 196 | 48.8 | 1.90 | 51.9 |
| Dix-Lee | 59 | 53.6 | 1.72 | 51.1 |
| Far View Farm | 79 | 47.8 | 1.83 | 50.4 |
| Long Gr. Farms | 120 | 47.6 | 1.81 | 50.0 |
| Allred & Herring & Haines | 90 | 46.3 | 1.85 | 50.0 |
| Pioneer Vally Fm | 130 | 50.4 | 1.65 | 48.6 |
| Lovdal Farms | 77 | 43.4 | 1.83 | 48.5 |
| Elm-Brook | 43 | 39.4 | 1.90 | 47.9 |

DON'T BE SLOW



Call Now To Place Your CLASSIFIED AD

Ph: 717-394-3047 or 717-626-1164

Pole Shed & Barn Material Center

Large Selection of LAWRENCE HARDWARE

- Door Hangers
- Bumpers
- Brackets
- Stay Rollers
- Track
- Latches

- 1x8 Barn Siding 6' to 16'
- 2x8 T&G Yellow Pine Barn Flooring

Large Selection of ALL DIMENSION LUMBER

PRESSURE TREATED LUMBER

- Sizes:
- 2x4
 - 2x8
 - 4x4
 - 6x6
 - 2x6
 - 2x10
 - 4x6
 - 2x6 T&G

Excellent For:

- ★ FARM BUILDING ★ PATIO
- ★ FENCE ★ POLE SHEDS
- ★ SUNDECK ★ OTHERS

EASY-COVER™ by Onduline

FARM ROOFING SALE! 10% OFF



6'7" x 46" Sheet

- 25 Year warranty against leaks
- Four colors in stock

MUSSELMAN LUMBER INC.

200 BRIMMER AVENUE, NEW HOLLAND, PA

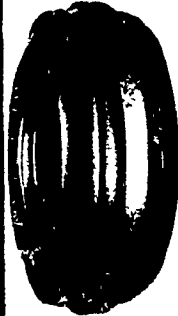
Phone 717-354-4321

Hours: Daily 7 AM to 5 PM, Saturday 7 AM to 12 PM

LOADER TIRES

• We Ship UPS

- 700-15, 6 ply . . . \$65.00
- 750-15, 6 ply . . . \$68.00
- 10-16.5, 6 ply . . . \$80.00
- 12-16.5, 6 ply . . . \$115.00



FRONTS

WE SHIP UPS

- 400-12 . . . \$22.00
- 400-15 . . . \$24.00
- 500-15 . . . \$31.00
- 550-16, 4 ply . . . \$33.00
- 550-16, 6 ply . . . \$36.00
- 600-16, 4 ply . . . \$37.00
- 600-16, 6 ply . . . \$41.00
- 650-16, 6 ply . . . \$42.00
- 75L-15, 6 ply . . . \$50.00
- 750-16, 6 ply . . . \$50.00
- 750-16, 8 ply . . . \$54.00
- 750-18, 6 ply . . . \$64.00
- 9.5L-15, 6 ply . . . \$55.00
- 9.5L-15, 8 ply . . . \$60.00
- 1000-16, 6 ply . . . \$80.00
- 11Lx15, 8 ply . . . \$75.00
- 1100-16, 8 ply . . . \$110.00
- 14L-16.1, 8 ply . . . \$160.00

RADIAL SPECIALS

- 18.4x34, 6 ply . . . \$420.00
- 18.4x38, 8 ply . . . \$495.00
- 20.8x38, 10 ply . . . \$610.00

★ We Install Within 100 Miles Of Lancaster & Harrisburg

★ We Install Within 50 Miles of Sunbury & Myerstown

Service Available In:
• Wellsville, New York
• Coudersport, PA
• Bradford, PA



TRACTOR TIRES



MUST SELL FOR CASH

- 9.5x24, 4 ply . . . \$82.00
- 11.2x24, 4 ply . . . \$95.00
- 11.2x28, 4 ply . . . \$113.00
- 11.2x38 . . . \$140.00
- 12.4x28, 4 ply . . . \$125.00
- 12.4x38 . . . \$165.00
- 13.6x28, 6 ply . . . \$155.00
- 13.6x38, 6 ply . . . \$191.15
- 14.9x28, 4 ply . . . \$158.00
- 14.9x38, 6 ply . . . \$224.00
- 15.5x38, 6 ply . . . \$220.72
- 16.9x34, 6 ply . . . \$250.00
- 16.9x38, 6 ply . . . \$275.00
- 18.4x38, 8 ply . . . \$364.12
- 20.8x38, 8 ply . . . \$495.00
- 20.8x34, 6 ply . . . \$450.00
- 18.4x34, 6 ply . . . \$289.00
- 18.4x34 8 ply . . . \$325.00
- 16.9x30, 6 ply . . . \$224.00
- 18.4x30, 6 ply . . . \$262.00
- 14.9x28, 6 ply . . . \$173.00
- 13.6x28, 4 ply . . . \$140.00
- 16.9x28, 6 ply . . . \$220.00

★ Above tires are original equipment type, Federal Tax is included in above price.

IF YOUR SIZE IS NOT LISTED CALL US FOR SPECIAL PRICE!

MUMMAU'S TIRE

Mt. Joy, Pa.

717-653-1260

PA. TOLL FREE — 1-800-222-1729