

## City family makes it

(Continued from Page D34)

Donna, after he purchased two of the Hotson bovines and also bought a milking machine since he "couldn't milk that cow by hand to save me".

After the purchase of these first cows, "we sort of inched our way into it", Reusing states. Since 1980, one or two cows were added at a time from nearby Jersey sales or

neighboring farms, with a total of 5 animals coming from Spring Run Farm of New Wilmington, until the herd reached its current numbers of 22 head. Only two animals have been culled and no heifers calves have been lost to date. Looking down the neat and clean rows of stanchions featuring automatic water bowls, cow mats, and cow trainers, in the spacious and airy

barn, the Reusing producers display a dairyness and will to milk in addition to a sound functional type very rarely found in a barn belonging to a "city man turned country".

Admitting that he still has a lot to learn, Reusing gives his dairy, Milk Marketing, Inc. of Ohio, much of the credit for the instruction on remodeling his barn, milking, and the proper equipment to use. "I think Milk Marketing is tops," Reusing states and adds that in September of this year they will be giving protein bonuses to dairymen on an incentive plan.

According to the information that Reusing received from the dairy, protein premiums will be paid to producers on a basing point system according to the somatic cell count.

For example: For somatic cell counts less than 500,000 the proposed basing point is 3.2%. If

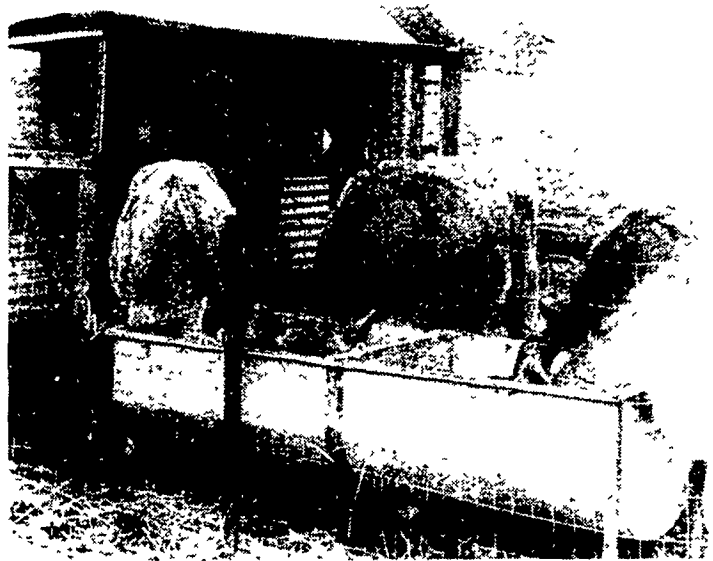
the average protein test for the month is 3.73, you subtract the basing point of 3.20 which equals 5.3 additional points multiplied by the protein differential of .03 equals 15.9 cents protein premium per hundredweight. For somatic cell counts of 500,000 to 750,000 the base point to be subtracted from the herd average would be 3.4%, for somatic cell counts in the 751,000 to 999,000 range the basing point to be subtracted would be 3.6%. This means that the higher the somatic cell count of a herd becomes, the higher the basing point becomes which when subtracted from the protein average would leave less points to be multiplied by the protein differential for the protein premium.

With the Reusing herd averaging a somatic cell count way below the 200,000 point, Reusing is excited about the additional revenues his herd will bring him.

It would seem that for a beginner, Reusing chose the best breed when taking into consideration the additional butterfat and protein premiums to be reaped from Jerseys, but he admits that it was mostly coincidence. "I didn't even know that there was that much difference (between breeds)", he stated. "As we drove around, we used to quiz ourselves on the different types of cows in the meadows", Reusing remembers from family drives together.

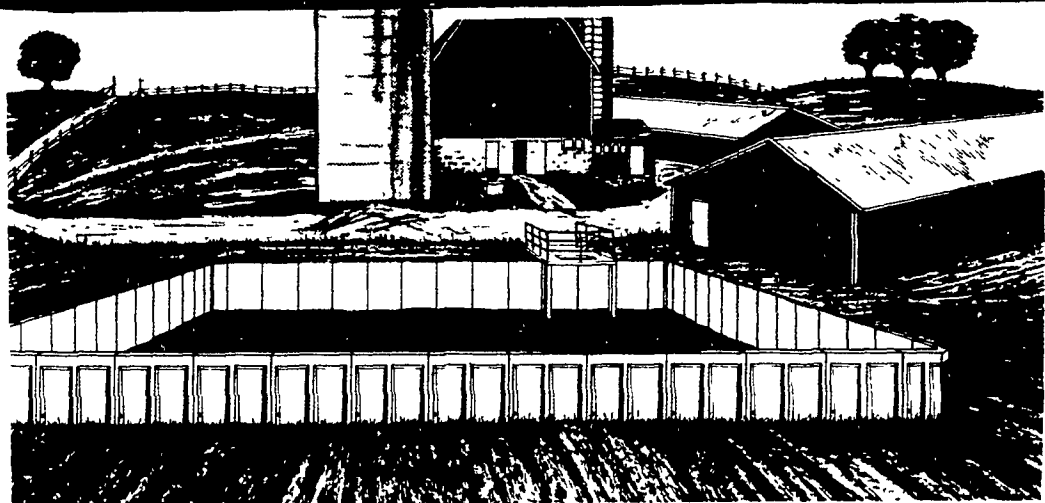
In addition to crediting his dairy for their support Reusing and his wife also appreciate the educational programs of the extension service and Penn State and try to attend all the seminars and instructional schools possible. "Dave and I went to milking school," Donna states. They also attend annual Dairy Days and the

(Turn to Page D36)



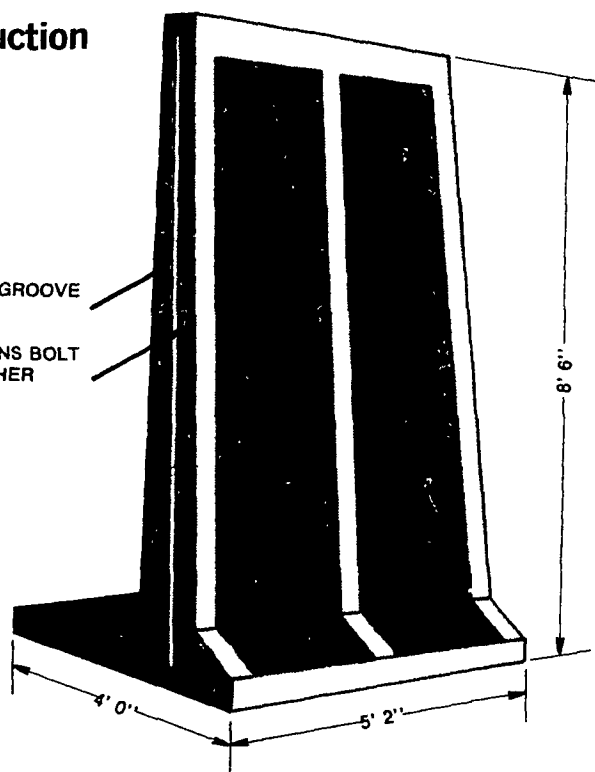
Heifers on Reusing farm are fed out of a used wash tub. Old greenhouse in background becomes a heifer stable.

## PRECAST LIQUID MANURE STORAGE UNITS



- ★ Fast Installation
- ★ Quality Controlled Production
- ★ Low Cost
- ★ Moveable For Future Expansion
- ★ Approved By SCS

TONGUE & GROOVE JOINT  
SECTIONS BOLT TOGETHER



Featuring a single component design for fast installation and completion. The sections bolt together and the use of a sealant placed in the tongue and groove creates a sealed wall surface.

The sections may be dismantled and re-located. Customers may select any length or width in 5'2" increments.

In addition to manure storage, these upright units may be used as retaining walls or bunker silos.

A special center wall is available to permit placing bunker silos side by side or dividing existing trench silos.

A Complete Line of Sollenberger Precast Farm Products Available Here.



## Sollenberger Silos Corp.

A Nitterhouse Company  
Box N Chambersburg, PA 17201 (717) 264-9588  
A Producer of Quality Concrete Products Since 1923

## STIHL® MODEL SG-17 MISTBLOWER

A multi-purpose power tool which Blows, Dusts, & Sprays liquids and dry chemicals, to control and eliminate weeds. Complete tobacco, worm and sucker control - covers total leaf over and under. Complete fly and insect control in and around barns.



★ EXCELLENT FOR BLOWING IN CHICKEN HOUSES

★ OUTLASTS THEM ALL

**STIHL®**  
The World's Largest Selling Chain Saw

FREE DEMONSTRATION  
Chain Saw - Concrete  
&  
Metal Saw Rentals

**STOLTZFUS WOODWORK**

RD Gap, PA Box 183  
1 Mile North Rt. 897 From Gap

**MARTIN HARDWARE & EQUIPMENT CO**

Rt 501 1 1/2 Miles South of Schaefferstown, PA  
Phone 717-949-6817

**A & B SALES & SERVICE**

2 Miles South of Rt 23 Along 772 Thru Monterey - RD 1 Ronks, PA

**WES STAUFFER SMALL ENGINES**

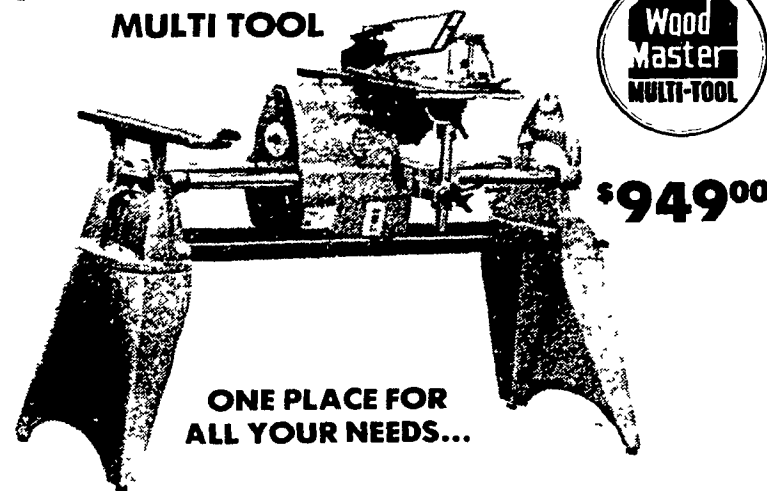
RD 3 Ephrata, PA Phone (717) 738-4215  
Ephrata Exit New Rt 222  
1/2 Mile West on Rt 322,  
Turn left onto Pleasant Valley Rd

**EBLING'S LAWN & GARDEN**

Myerstown Bethel  
717-866-6780 717-933-8192

**NOW OPEN THURSDAY EVENINGS  
Til 9 PM - For Sales Only**

**5 in 1 WOODWORKING  
MULTI TOOL**



ONE PLACE FOR ALL YOUR NEEDS...

**Trakita**

**ROUTERS**  
Model 3600B  
2 3/4 H.P.  
Guides are Optional

**\$199.00**



**Sprunger**

**DISC SANDER**  
Model DSF-21

**\$295.00**



**BLUE BALL MACHINE WORKS**

Rt. 322 East, Blue Ball • Mon.-Fri. 7:30-5, Sat. 7:30-11:30  
Thurs. Evening til 9

CALL 717-354-4478

