

## Conservation field day planned in Quakertown, N.J.

FLEMINGTON, N.J. — Did you ever wonder how farmers cope with poorly drained soils? How about the problems and advantages of conventional, minimum and no-till cropping?

On Saturday, July 16, farmers and non-farmers alike will have the opportunity to see soil conservation and agricultural farming methods in action. It is the First Annual Conservation Field Day sponsored by the Hunterdon

County Soil Conservation District. This year the site is Sycamore Lane Farm in Quakertown. Our farmer host is Herman Panacek, a Soil Conservation District Supervisor (one of five representatives).

In the past, this program was called Rural Ramble where participants boarded buses to visit area farms having a conservation method in practice. This one farm, on site program should prove to be

more popular.

There will be actual demonstrations on diversion and terrace construction and tile outlets, tile drainage, and waterway construction. The finished product will be available for inspection also. One exhibit will be cover cropping, mulching, and a film on tree planting. You will see a farm pond irrigation, deer fencing and nursery production. Of special interest

to homeowners is the woodlot management demonstration including before and after results.

The program is from 10 a.m. to 3 p.m. and the cost is only \$4 per person including lunch. The sign-

up deadline is July 8 at the Soil Conservation District office, Extension Center, Route 31, north of Flemington, R.D.6, Box 49. For further information, call (201) 788-1397.

IT'S MAGIC  
How quickly  
You Get Results  
From Our  
Classifieds!

PHONE  
717-394-3047  
or 717-626-1164

### "DAIRYMEN"



### ROUGHAGE IS THE BACKBONE

Of Profitable  
Dairy Feeding!

Roughage deserves your special attention.  
That's why we recommend

### ALFA—ZYME

For Your Haylage and Mow Hay!

★ Recent years have seen the development of products to increase the value of roughage...

★ OVER 10 YEARS AGO, we experimented by sprinkling ALFA-ZYME over the hay as it was placed in the mow. By putting the hay into a sweat, ALFA-ZYME GREATLY INCREASED THE PALATABILITY OF THAT HAY!

★ Tests continued to cover all types of weather - wet, normal and dry years - with excellent test results.

#### Recommended Usage for ALFA-ZYME:

- ★ 50 Lb. to 300 Bales of Hay
- ★ 50 Lb. to 200 Bales of Rained On Hay
- ★ 50 Lb. to Each 3 Tons of Haylage.

### ★ ATTENTION ★

If You Are A User Of ALFA-ZYME And Have Recently Moved, We Probably Have A Dealer In Your Area. Contact Us And We Will Be Glad To Provide You With The Name Of Your Nearest Dealer.

WRITE - BOX 32, NEW KINGSTOWN, PA. 17072  
OR CALL - 717-697-9085

#### ALFA-ZYME...

The product that takes farm grown products and returns them to you in a live and active state!

#### ALFA-ZYME...

The product manufactured by a farm family!

MANUFACTURED BY

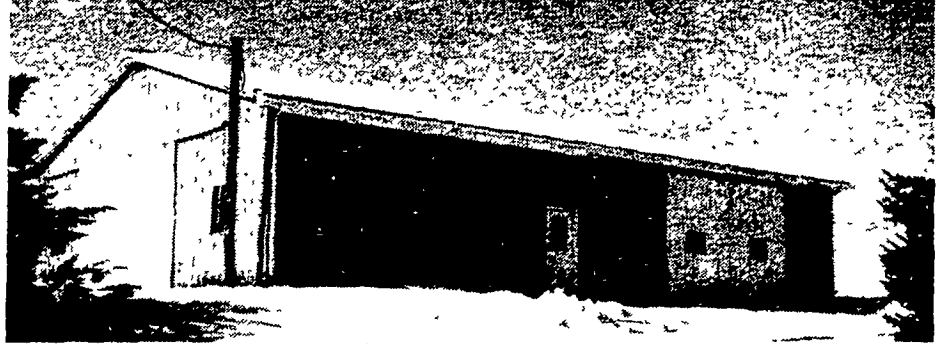
**Hildum**  
Fermentation & Processing Co.



New Kingstown, PA 17072  
Phone (717) 697-9085

## POLE BUILDINGS

by Stoltzfus Builders



CUSTOM BUILT AGRICULTURAL, RESIDENTIAL AND COMMERCIAL BUILDINGS FOR A VARIETY OF NEEDS:

- Painted Galvanized Roof & Siding in a wide range of sizes, designs and colors.
- Weather Resistant Pressure Treated Poles and 2x6's T&G Skirting

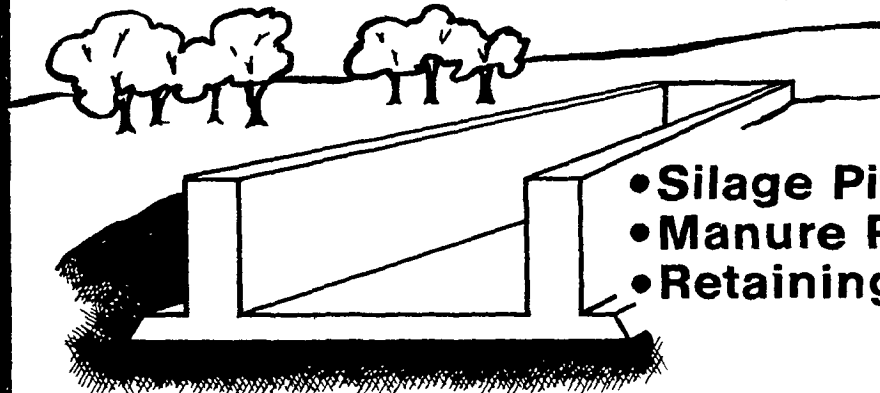
Call For A Free Brochure

**BEN STOLTZFUS**  
(215) 273-3456

**SAM STOLTZFUS**  
(215) 273-3495

Honeybrook, PA

## POURED SOLID CONCRETE STORAGE SYSTEMS



- Silage Pit Walls
- Manure Pit Walls
- Retaining Walls

Increase Your Volume  
By In-Ground Storage  
Any Size

**Balmer Bros.**

CONCRETE WORK, INC.

410 Main St. • Akron, PA 17501 • (717) 859-2074 or 733-9196