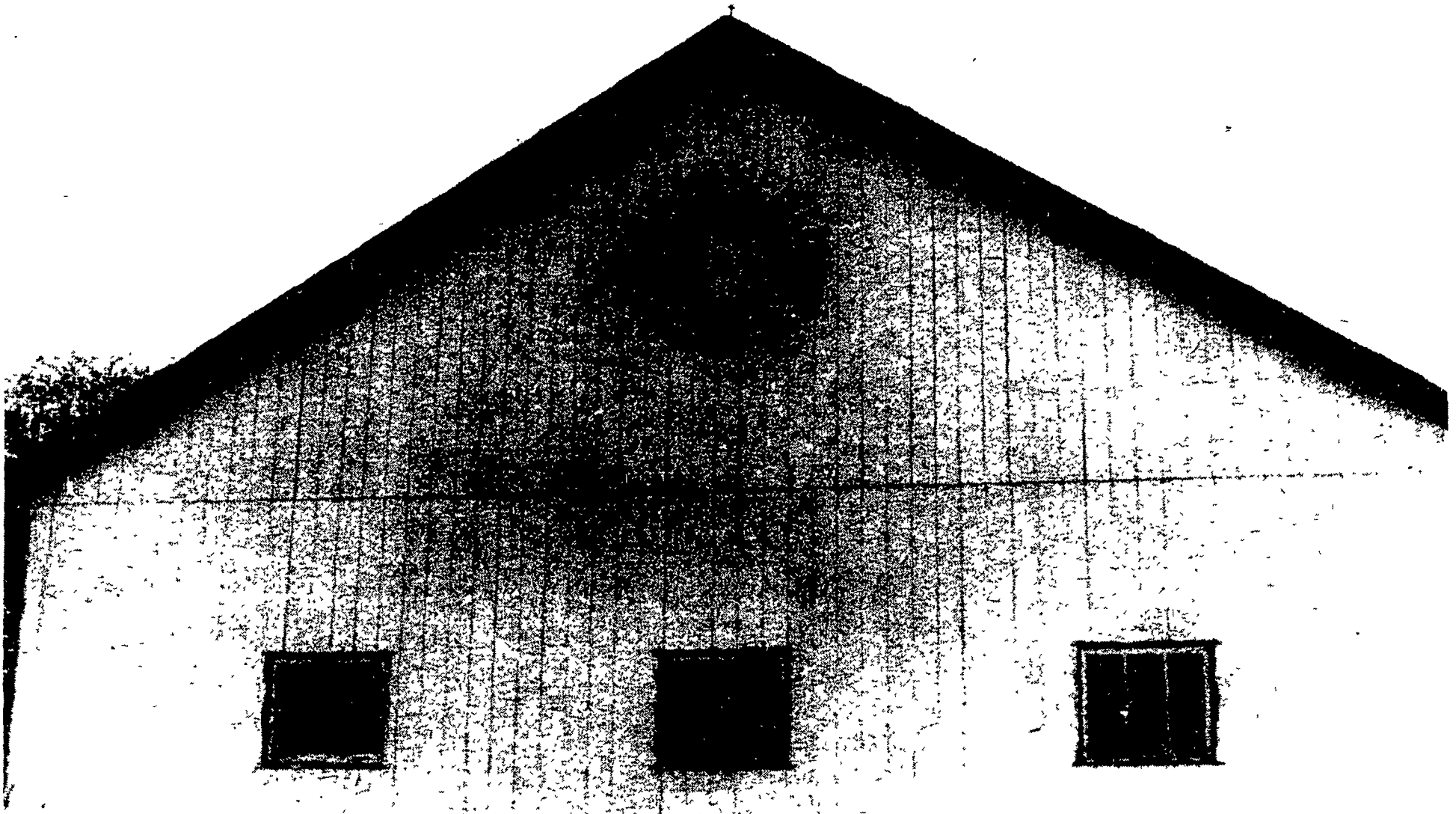


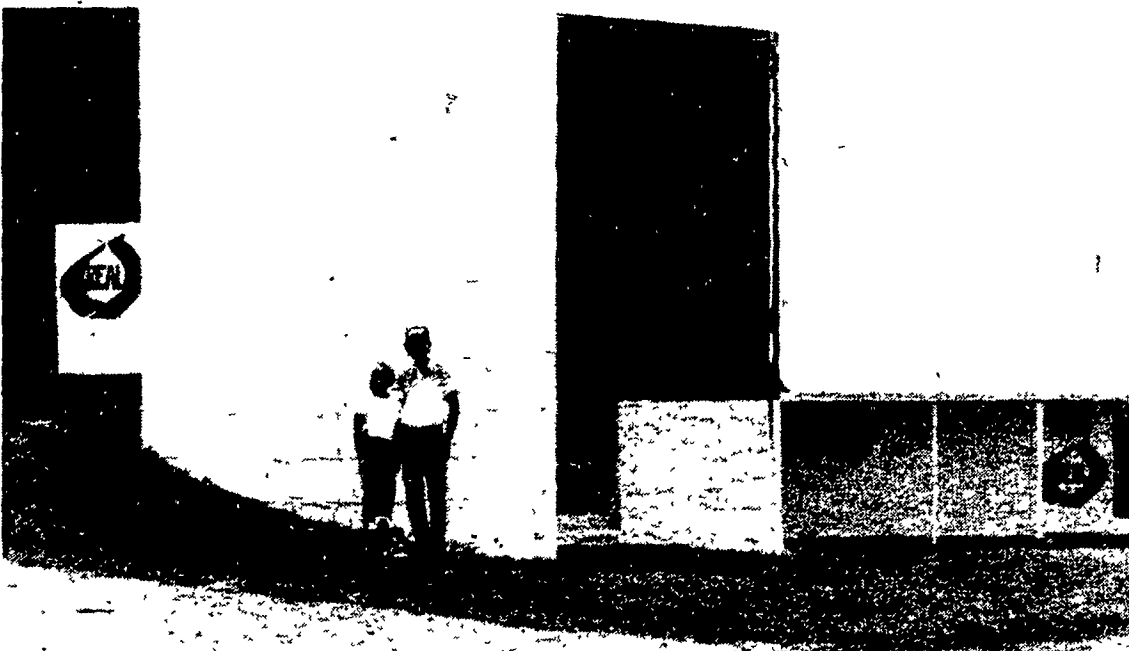
# - Keeping milk in the public's eye



"Make Mine Milk" suggests this attractive sign that accents a building on the Laverne Bupp family's Gum Tree farm

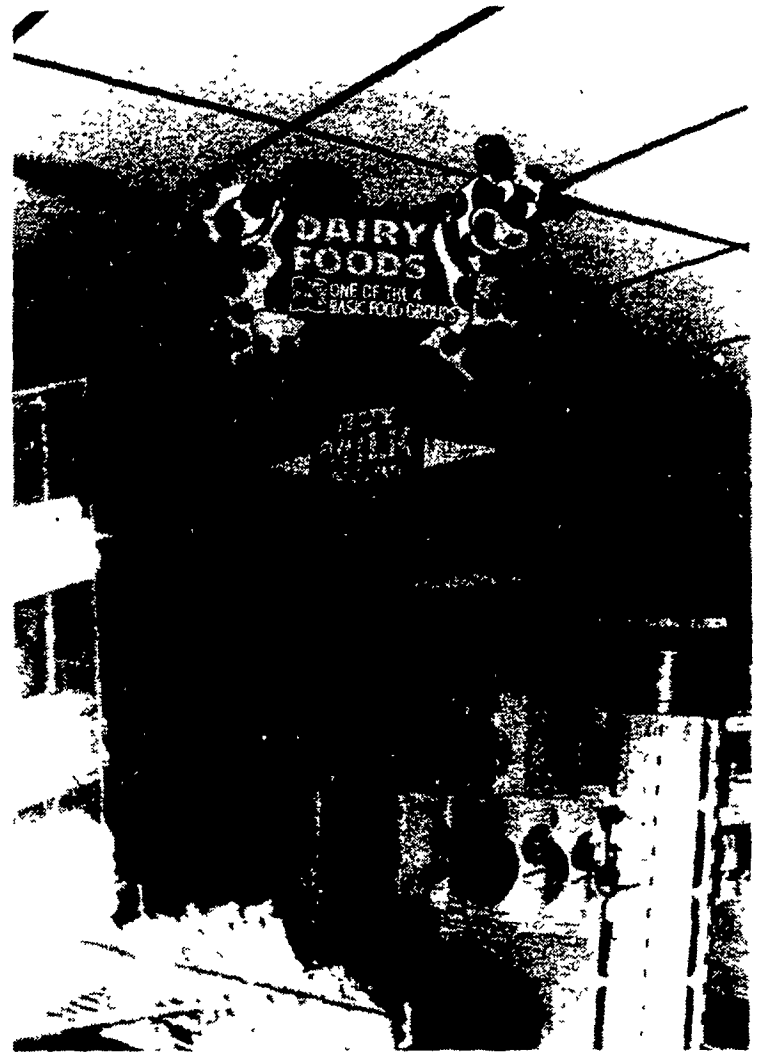
in southeastern York County. Bupp's wife, Norma, designed and painted the colorful milk promotion decoration.

## Lawyers like logos



"We were painting the barn anyway," explains Lindy Lawyer concerning the addition of dairy logos to the decorating scheme. The Real Seal has been added to both the barn and the milk house on the Thurmont, Md. farm of Jan and Lindy Lawyer. And while she was at it, Lindy decided to add the Dairymen milk co-op logo to the side of the farm machinery shed.

## In-store promotion boosts dairy products



The Way-Har Dairy Farm Store in Berks County, which jugs its own milk, makes good use of in-store space to promote dairy products

