

DAIRY EQUIPMENT

DAIRY EQUIPMENT

DAIRY EQUIPMENT

DAIRY EQUIPMENT

DAIRY EQUIPMENT

LIVESTOCK EQUIPMENT & SUPPLIES

LIVESTOCK EQUIPMENT & SUPPLIES

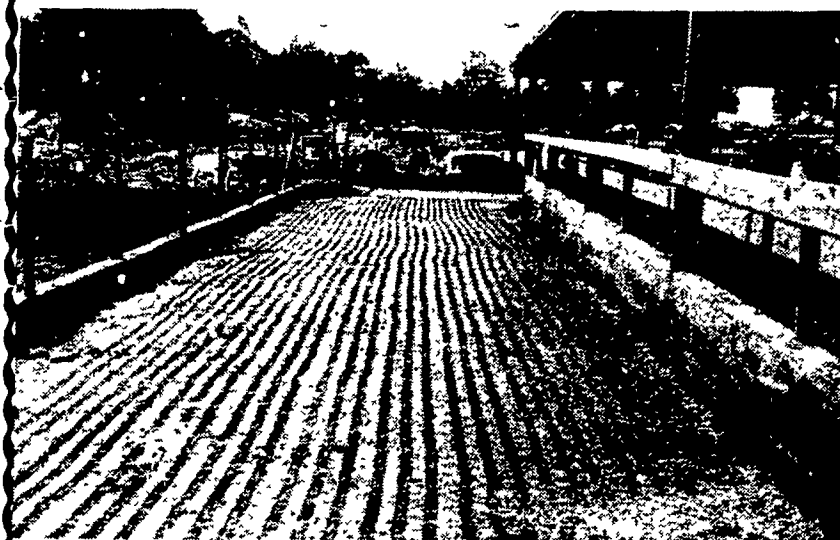
12 ton feed bin, \$300
 Complete DeLaval short time pasteurizing plant, \$8000
 1100 gallon milk tank w/2 year old 5 horse compressor, \$2000
 Complete Surge pipeline w/250' of 1 1/2" glass pipe, 2 Surge Vacuum pumps, 8 milkers, brain, sink and etc.
 JD #24 industrial skid loader, \$3000
 JD #2640 w/loader, 1200 hours, new high-low clutch and new main hydraulic pump, price negotiable

H&H Dairy Farm
 RD 3, Coatesville
 215-384-7647

SAVE VALUABLE COWS FROM FALLS ON SLICK CONCRETE

Scabbling has become the most efficient way to end slick concrete problems. Hundreds and hundreds of farmers have found it both effective and economical.

We have developed the right equipment at the right price with the know-how to back it up.



Now you can rent this equipment and do it yourself or we will contract to do the job for you. Call us collect for more information.

SUBURBAN RENTALS, INC.

Hagerstown, MD
 Please call us Collect (301) 790-1303

Now serving a 10-state area

AGRI-TEK

AUTHORIZED DEALER

WESTFALIA FOR NuPulse

Full Line of Excellent Milking Equipment
 Featuring **CODATRON**
 The Westfalia Feeding and Control System for all dairy herds

Featuring **NU-PULSE MILKERS**
 The Milker that increases production for more income today, growth tomorrow

SPECIAL PRICE

ON CLEANING DETERGENTS
 (while supply lasts)

NU-CLEAN Liquid Detergent for Cleaning Pipeline Systems

5 gal... **\$22.00** 15 gal. **LOW LOW \$60.00**
 PRICE

Available at the store or from your route man

MILKING PROBLEM?

Let us analyze your milking system with the electronic pulsation tester.

Performed by our servicemen. Call for Appointment.

COUPON

SPECIAL Introductory Offer

FREE gallon of PREP UDDER WASH when you try 5 gallons of PROTEK TEAT DIP

WITH THIS COUPON

GOOD USED MILKERS, TRANSFER SYSTEMS AND VACUUM PUMPS - IN STOCK - CALL FOR PRICES

FULL LINE OF KENDALL DAIRY MILK FILTERS
 Available at Store or Route Trucks

LOOK FOR ROUTE SALESMEN AMOS FISHER & GARY WALTON

24 HOUR FULL SERVICE DEALER
 * CALL RICK THOMPSON FOR ALL YOUR SERVICE NEEDS *



50 E. 28 Division Highway
 Lititz, PA 17543
 717-627-3000

USED BELTING MATERIAL

Good for free stall and stanchion barns
 30", 36", 42", 48", 54", 60" wide
 Size 4x6 under \$30
 Special on 57" Wide Material
 Phone: 301-885-5045

MUELLER HiPerForm

... its like Money in the Bank!



- 1 **COOLING PLATES** - Stainless steel patented Mueller Temp-Plate® Heat Transfer Surface
- 2 **REFRIGERANT LINES** - Precharged stainless steel piping between inner and outer cooler walls
- 3 **REFRIGERATION CONTROL SYSTEM**, HiPerForm electronic - with many new features
- 4 **PRE-START CONTROL**. Allows cooling and agitation before adding fresh warm milk into milk already cooled
- 5 **ALARM CIRCUIT** - Five-inch red light with three warning modes
- 6 **MANUAL BYPASS SWITCH** - For emergency cooling operations
- 7 **DIGITAL DISPLAY** - Accurately indicates milk or wash water temperature
- 8 **AGITATOR TIMER** - For agitating milk the required time before butterfat sample is taken
- 9 **INTERVAL TIMER** - Automatic agitation at preset time interval
- 10 **AUTOMATIC WASHING SYSTEM** - Efficient jet-tube cleaning with the Mueller Matic® Automatic Washing System
- 11 **LEG SUPPORT BEAM** - Constructed with no metal to metal contact between inner liner and exterior

SPECIAL
300 Gal. w/2" compressor
SOLD \$475

300 Gal. Milkeeper 650 Gal. Esco
 400 Gal. Sonnenier 1000 Gal. Sunset
 600 Gal. Girton

CAMERON'S REFRIGERATION and FARM SERVICE

RD 2, Port Royal, Pa. 17082
 PH: 717-527-4795



FOR SALE SAWDUST & SHAVINGS

Bags & Bulk
ED VOGT & SON
 Medford, NJ
 609-654-7489

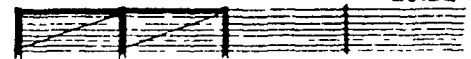
14 elevated individual calf stalls, connected as one unit. Used 5 years \$500. Stump Acres. 717-792-3216

For Sale - 2" pipe, excellent for gate construction or fencing. Call evenings and weekends 717-872-2579. Daytime 717-872-9152.

Painted plywood calf hutches, \$40 each, 717-587-4839.

Enjoy the **AFFORDABLE** security of **STRONG, LONG-LASTING HIGH TENSILE FENCES** by **KENCOVE**

Kencove prices are hard to beat! Order early for discount prices **FREE GUIDE**



Call these toll free numbers:
 Outside PA, 800-245-6902
 In PA, 800-442-6823

KENCOVE FARMS
 Master Card Visa UPS Delivery

RD #1 Blairsville PA 15717
 412-459-8991
 The Fence Of The Future

WOOD SHAVINGS

**** KILN DRIED ****

Don't be caught short this spring! Call now for delivery of bagged, baled or bulk wood shavings & sawdust.

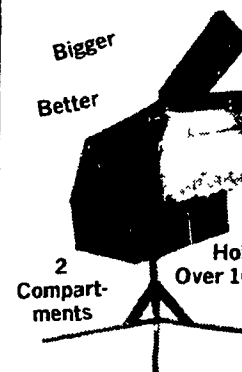
A quality bedding material at an economical price.



PENN AG PRODUCTS INC.

403 S. Custer Ave.
 New Holland, PA 17557
 717-354-4174

SALT & MINERAL FEEDERS



Strong wood box with steel top, ideal for free choice feeding in dairy or beef operations.

Dealers wanted for York & Chester Co.

Holds Over 100 lbs.
\$175 Complete
\$155 Without Insecticide Applicator

AMOS S. STOLTZFUS

Box 515, Bird-in-Hand, PA
 1 Mile North of Bird-in-Hand on Beechdale Road or Contact:

— Dealers —

Creutzburg Inc.
 Paradise, PA
 717-768-7181

Arrow Vac
 117 S. Blakley St
 Dunmore, PA 18512
 717-347-0331

Edgar Dickensheets
 3405 Sams Creek Rd
 New Windsor, MD

HORSE - CATTLE - FLATBED TRAILERS

Over 200 New Trailers in Stock in 8 Brands

- 16 ft. tandem axle flatbed w/new commercial tires / axles, brakes, ramps, stake pockets, oak deck **\$1295**
- Bumper stock model 1695, 2 horse thoroughbred deluxe, extra wide w/4 wheel brakes, 2 full escape doors, sliding windows & ramps ... **\$2695**
- 20 ft. x 6 ft. Texas pipe trailer **\$3500**
- 28 ft. x 8 ft. gooseneck flatbed w/8 lugs, all oil bath axles, deck on nose, ramps, stake pockets. **\$3750**
- 22 ft. x 7 ft. gooseneck stock w/full nose, wood lined, 750 x 16" rubber, brakes on both axles. **\$4500**

SOME USED MODELS AVAILABLE.

TRADE-INS ACCEPTED

'82 & '83 Crew Cab Duallys Available

Free delivery to New Holland Sales Stables.

Open 9 A.M. to 6 P.M. - 6 DAYS (Closed Thursday)
LUX STABLES, INC. — Jesse R. Austin, Distributor

10214 Lanham Severn Rd., Lanham, Maryland 20706
 2 Miles Off Interstate I-95
 CALL: (301) 464-2574