

MAILBOX MARKET

For Sale - 12' heavy duty AC disc; 10' cultimulcher, \$950. 3 bottom, 18". Oliver plow w/6x6 beam. Lancaster Co. 717-354-0338.

For Sale - New Holland 1469 self propelled haybine \$3500. Balt. Co. 301-374-4177.

For Sale - 8' Judson lime & fertilizer spreader, Hardie 400 gal. PTO orchard sprayer. Sch. Co. 717-345-4498 after 9 PM.

Wanted - IHC 450 Diesel Farmall tractor. State price and condition. G. Gary Nemeth, Rt. 1, Box 215, Hopewell, N.J. 08525 or 609-466-2273

For Sale - Wheat straw. Lanc. Co 717-665-6053.

For Sale - 8 unit motel & luncheonette, with living quarters. Presently being operated. Possession anytime. Clinton Co. \$65,000. Call 717-923-1483.

For Sale - Am. Alpine yearling milkers and doe kids from good blood lines. Northampton Co. 215-253-8951 early mornings or weekends.

TRUCKS & TRAILERS

Wanted - Old or scrap fork lift trucks, will pay cash. 717-652-1957 Harrisburg.

TRUCKS & TRAILERS

1964 Mack B61 tandem tractor, 711 motor, 5+3, good shape, \$4000. Bucks Co. 215-297-8354.

1963 Diamond-T, P-5000, 16' stake, 45,000 GVW, 5+2, ps, 63,000 miles, 10.00x20 tires, clean, 1965 Mustang, 301-329-6842 eves.

For Sale - '64 Int. 1800 truck, 14' Omaha grain dump, 5x2 transmission, 2 spd. rear, 900x20 tires, 23000 GVW. 717-933-8134.

1983 Ford F250 3/4 ton front wheel drive, 4 speed, 351 V8, Candy Apple Red, 8600 GVW, regular gas, heavy duty rear end and springs, suitable for pulling gooseneck trailer, four LT235x85R16 radials, bumper and running boards, AM-FM radio, gauges, 4000 miles, like new, under warranty, \$10,750. 315-364-8077.

Flatbed truck, CT800 Ford, 28' bed with 1' folding extension, 8' head board, up to 41,000 gross, 391 engine, ideal for hauling hay, very good cond., 717-367-1545.

For Sale - 1968 Ford F800 dump lime spreader, 10' Stoltzfus full hydraulic 391, 5+2, posi rear, will separate. Cecil Co., MD 301-658-5686.

TRUCKS & TRAILERS

1974 Fruehauf 28' dump trailer, 60" sides, 10.00x22 rubber, 6 fair. 2 bad, control flow, tarp and bows, tub bottom, \$8995, wetline \$895, 717-569-6990 or 814-652-2418.

For Sale - IH 2000D grain truck, 600 bu. cap. Air tag axle, 22 ton hoist, good cond., Warren Co., NJ 201-753-5313.

Schwartz, double drop deck, 42' trailer. Excell. shape, 6 of the original 8 1/4 x 15 18 ply tires, heavy duty outlitters and winch.

215-756-6708

- * 1981 B-350 Van, 9000 GVW
- * 3-1980 Colts, auto. and 4 speed
- Special price
- * 1979 Volari 2 door coop, 6 auto; like new
- * 1976 VW Rabbit
- * 1981 Escort GLX, air
- * 1977 Diplomat, 44,000, very nice
- * 1980 D50 pick-up, low miles
- * 1978 D100 Pickup, 1 owner
- * 1978 Omni, 4 door

PETTICOFFER DODGE, INC.

Route 230 East Next to Shopping Center
Elizabethtown, PA
PHONE: 717-367-1808

TRUCKS & TRAILERS

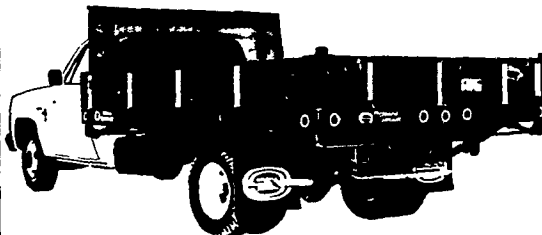
TRUCKS & TRAILERS

TRUCKS & TRAILERS

TRUCKS & TRAILERS

Tri-Loader..

European-style Contractor Body



The European-style Tri-Loader body is an extremely versatile piece of equipment. It features 14" hinged sides which fold down or remove completely for loading from either side, a double-acting tailgate, hinged top and bottom for dumping and spreading operations with forward or rear controls, or both. Swaged (indented) 3-light cluster in rear outfall for better light protection and appearance. Heavy duty 40" or 52" steel bulkheads with full width mesh windows combine maximum protection and visibility. The rugged 96" wide platform offers maximum payload and is available in wood, smooth steel, treadplate steel or steel over wood flooring.

FARMERSVILLE EQUIPMENT INC.

RD 4, East Farmersville Road
Ephrata, PA 17522
Located in the Village of Farmersville,
Lancaster County
717-354-4271

Omaha Standard

18'x18'x40" steel dump body w/16 ton double cylinder hoist. 717-529-2204.

1970 International truck with 24' Grove Super 10 rollback, \$5500 or best offer. 301-829-2060.

'81 Chevy Luv, 4 wheel drive pickup, 4 cyl., 4 speed, lockout hubs, sliding rear window, AM-FM, 20,000 miles, \$5800. 717-733-2873.

We will make any size trailer or gate to suit your needs. 14,000 GVW gooseneck trailer 8'x16', \$2750. 10,000 GVW 8' x 16' trailer, \$1100. Or a 10' steel gate, \$85. 12' x 100, 14' x 120. Call Ivan High at 717-345-6328.

Cattle truck, 1977 dodge, 14' body w/wench, \$6800. 607-722-7247 days.

'81 Chevy Custom Deluxe, 1/2 ton pickup, 305, 3 speed overdrive, dark blue, \$4950. '81 Dodge Ram, 150, 1/2 ton pickup, 6 cyl., 3 speed overdrive, PS&PB, two-tone paint, \$5350. 717-733-2873.

1974 IH model 2050A 16' dump with blower, 215-896-9801.

'82 Chevy Custom Deluxe, C20, 3/4 ton pickup, 305 automatic, PS/PB, air, radial tires, \$6950. 717-733-2873.

1962 IH model 1600 with 17' flat bed dump, 215-896-9801.

'82 Chevy Scotsdale, 6.2 diesel, 4 wheel drive pickup, 4 speed, PS/PB, two-tone paint, 10,000 miles, \$9250. 717-733-2873.

PICK UPS

- 1982 Chevy C10 Shortbed Custom, 6 Cyl., St. Shift, PS, AM-FM, 11,000 Miles, Gauges, Cap. \$7495
- 1982 Datsun King Cab Diesel, 5 Speed, AM-FM Stereo & Cassette, PB, 17,000 Miles, Like New \$6995
- 1981 Chevy C10 Custom, 305 V8, Auto., PS, PB, AM Radio. \$6995
- 1981 GMC Sierra 305, V8, Auto., PS, PB, AM-FM, Chrome Rails, 2 Tone Red & White \$7495
- 1980 Chevy El Camino Royal Knight, 4.4 Liter V8, Auto., PS, PB, AM-FM Stereo, Tilt Wheel, Cruise Control, 2 Tone Black & Silver, 31,000 Miles \$6995
- 1980 Ford F250 Super Cab, 351 V8, Auto., PS, PB, AM Radio, 2 Tone Brown & Tan, 33,000 Miles \$7995
- 1980 Ford F350 Ranger XLT Camper Special, w/Dual Wheels, 400 V8, Auto., PS, PB, Dual Tanks, 10,000 GVW, 2 Tone Brown & Tan, 30,000 Miles \$8995
- 1979 Ford F100 Pickup, 6 Cyl., 3 Spd. \$3495
- 1979 Datsun, 4 Cyl., 4 Speed, AM-FM, 30,000 Miles \$4695
- 1979 Ford F150 Custom, 300 6 Cyl., Auto., PS, PB, AM Radio. \$5795
- 1979 GMC Sierra, 305 V8, Auto., PS, PB, 29,000 Miles .. \$5995
- 1978 Ford F350 Ranger Camper Special, 460 V8, Auto., PS, PB, Air Cond., AM-FM & Tape, Dual Tanks .. \$7495
- 1976 Ford F100 w/Ford Fiberglass Cap, 360 V8, 3 Spd., PS, AM Radio. \$2995

STAKE BODY

1973 GMC 500 Stake Body, 350 V8, New Short Block, 4 Spd., PS, 18,500 GVW, 12' Body \$3995

SUBURBANS

1980 Suburban 4-Wheel-Drive 3/4 Ton, 350 V8, Auto., PS, PB, Air Cond., AM Radio, Lockout Hubs \$8495

VANS

- 1981 Ford E100 Econoline, 6 Cyl., Auto., PS, PB, AM Radio, Dual Tanks \$6895
- 1979 Dodge B200 Panel Van, 318 V8, Auto., PS, PB, AM Radio. \$5495
- 1977 Chevy Short Wheel Base Window Van, 5 Pass., 350 V8, 3 Speed Standard, PS, PB, AM-FM & 8-Track \$4295
- 1976 Chevy Window Van, 350 V8, Auto., PS, PB \$1995

4 WHEEL DRIVES

- 1980 Suburban 3/4 Ton, 350 V8, Auto., PS, PB, Air Cond., AM Radio, Lockout Hubs ... \$8495
- 1980 Chevy Scotsdale C10, 350 V8, Auto., PS, PB; Air Cond., Lockout Hubs, 2 Tone Red & Maroon \$8495
- 1980 Chevy Blazer, 6 Cyl., 4 Speed, PS, PB, AM-FM Stereo, Lockout Hubs. \$8495
- 1978 Subaru Brat, 4 Cyl., 4 Speed, AM Radio \$3995
- 1978 Ford F250 Crew Cab, 351 V8, Auto., PS, PB, AM Radio, Lockout Hubs, Tonneau Cover, 48,000 Miles \$7995
- 1978 Plymouth Trailduster, 360 V8, Auto., PS, PB, AM Radio, Chrome Slot Wheels, 2 Tone Maroon & Silver, 39,000 Miles. \$6995
- 1977 Chevy Silverado C30 Crew Cab, 400 V8, Auto., PS, PB, Air Cond., Dual Tanks, 38,000 Miles, 2 Tone Dk. Brown & Saddle, Super Clean \$7995

MOTOR HOME

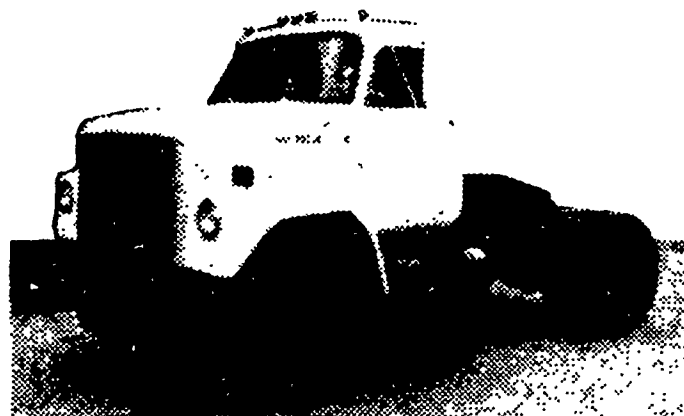
1980 Winnebago Brave, 26' Motor Home, Loaded, 15,000 Miles. \$24,900

MIKE RHODES & CO.

"THE TRUCK PEOPLE"

Rt. 663 & Swamp Pike, Gilbertsville, Pa.
Area Code 717 or 215 Call Toll Free
1-800-362-7655
or 215-327-1380

Used International Trucks



Special 2 for 1 Deal!

Buy one 1973 or 1974 International Tractor with 5 speed transmission, 2 speed rear, and VS-428 Gas Engine in good running condition for \$3400 and get another International great for spare parts or for fixing up **FREE!**

You'll never see a deal like this again!

This special sale is part of Jones Motor's liquidation of its huge inventory of tractors, trailers and other equipment you will find useful in your farming operation.

There are a limited number of these liquidation deals left, so call 215-948-7900 right now. Ask for Dave Skipper or Paula Mickiewicz.

All equipment is located at the Jones Motor terminal in Spring City, PA, just west of Phoenixville on Rt. 724.

Many Storage Trailers Good for all types of uses

Ford LN8000 1977 & 1978 models starting from \$8500. Exc. condition, ready for over the road or local hauling.

4 - 1977 Ford straight trucks w/20' cargo box starting at \$7995

DON'T WAIT - THESE BARGAINS WON'T LAST FOR LONG!

WE ARE NOW AUTHORIZED OLDSMOBILE DEALERS!