

Ida's Notebook

Ida Risser



Having just spent a long day at our local polling place, I feel disappointed and disillusioned with the public's view of the importance of a primary election. The purpose of the primary election is to choose candidates to represent their party in the general election.

It seems that a presidential election is the one time that most

people remember to vote. Maybe they think it is more important. Maybe they vote because more publicity is given to this election.

It is an expensive outlay of taxpayers money to have several people at each polling place and then only have 20 to 30% of the registered voters turn out to show their preference. In my township

alone there are 19 different districts with people waiting to help you to record your vote.

It is a long day and just because the polls are open from 7 a.m. to 8 p.m. doesn't mean that we can go home then. Even with the voting machines, the votes must be tallied, write-ins noted and then everything is checked and checked again before we can go home.

When I left home early on election day, I had to scrape a lot of ice off of the car windows. Then during the day, when we weren't busy, my mind drifted back to my garden and I wondered if the frost and cold had hurt the big bean plants and my tomato plants. The next morning I hurried out across the wet grass and past the starling nest in the hollow trunk of the pear tree and found them standing there proudly and apparently unharmed. The tiny peas hanging on the vines made me feel happy to be home again in my own garden.

Polled Hereford Assn. plans field day

MARIANNA — The Pa. Polled Hereford Assn. plans a fun-filled field day on Saturday, June 4, at Flat Stone Lick Farm, here.

The theme of the program will be "The Importance of Fertile Females," with sessions centering around the APHA Benchmark Dam Program.

Registration will begin at 9 a.m., and speakers will include Dr. Charles Wood on "Home Veterinarian Practices," and Dr.

Les Burdette of Penn State University on "Forage Production and Nutrition."

Meat and beverage will be included for a noon meal and all participants are asked to bring a covered dish.

The field day is being jointly sponsored by the Mason-Dixon PHA, the Pa. PHA and the Pa. Junior PHA. For additional information, call (412) 267-3325.

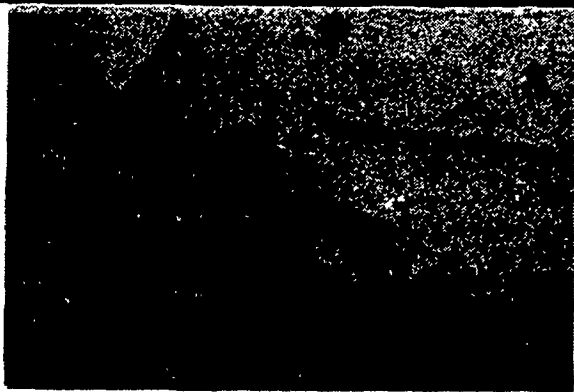
Franklin 4-H Shepherds

hear workshops

CHAMBERSBURG — The Franklin 4-H Shepherds met recently at the Extension Office for workshops by members David Keener and Marty Clemmer.

The June meeting is to be a family night at the Kenner home in Nyesville, and will include a film on 4-H Congress and State Capital Days.

LOOK MISTER FARMER!



Heights To 120 Ft.

"The Farm Painting Specialist"

Quality Workmanship and Quality Materials have produced a proven list of satisfied customers since 1961.



for *Free* estimate

SEAL CRETE, INC.

Allen B. Shirk

RD 2, Ephrata, PA
717-859-1127

BOMBERGER'S

POWER SPRAYER/DUSTER

Get your dusting and spraying jobs done quickly and easily.

Heavy-duty, but compact and lightweight, this backpack sprayer/duster goes anywhere you go. Optional attachments give added versatility. And the ECHO DM-9 can also double as a power blower.

12-MONTH LIMITED WARRANTY*
*90-day limited warranty if used commercially

• Monday, Thursday, Friday 'til 9:30
• Tuesday, Wednesday, Saturday 'til 6:00
717-665-2407

WE SHIP UPS OR PARCEL POST



List Price \$399.95
OUR PRICE

\$329.00

Bombberger's
ELM, PA.

Flies are a problem!

Fogging, larvicides and spreading chemicals around the barn can only offer you a temporary solution...



An automatic fly control system from COASTAL FLY CONTROL takes care of flies all season long, automatically. None of your valuable time is involved.

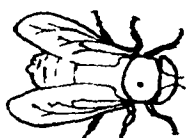


We also install and service your system!



Call us today before the spring rush!

COASTAL FLY CONTROL



RD 2 Box 281
Conestoga, PA 17516



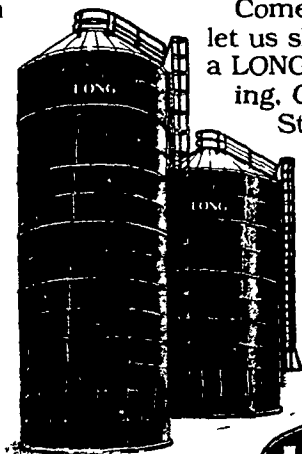
717-285-3979 717-872-8358

HOW TO MAKE FEED MORE DIGESTIBLE, MORE PALATABLE, AND MORE NUTRITIOUS

Install a LONG Oxygen Limiting Glass-Lined Storage System for storing high moisture grain and medium moisture forages. Our glass-fused-to-steel wall sheets and roof panels, and the breather bag system limit the amount of oxygen which contacts the feed, thereby limiting the amount of fermentation that occurs within the structure. Feed stays fresh longer and the need for drying equipment is eliminated.

Feed tastes better too, and helps obtain greater milk production and weight gain at a more economical price.

Come in today and let us show you how a LONG Oxygen Limiting, Glass-Lined Storage System can help you save money.



LONG

LONG MFG. N.C. INC.



H SHEY EQUIPMENT COMPANY, INC.

SYCAMORE IND. PARK
255 PLANE TREE DRIVE
LANCASTER, PA. 17603
(717) 393-5807

Route 30 West
at the Centerville Exit

Designers of Quality Systems For Poultry, Swine & Grain Handling