

Public Auction Register

Closing Date Monday, 5:00 P.M.
of each week's publication

SAT. JUNE 18 - 10:30 AM Public Auction of Farm Equipment Located at Hunter's Sale Barn, Inc., Rt. 276, Rising Sun, MD. Norman E. Hunter and Parkes T. Williams, Auctioneers.

SAT. JUNE 18 - Public Auction of Trucks and Vehicles. Located in Iselin, N.J. Vilsmeier Auction Co., Inc.

WED. JUNE 22 - Public Auction of Crushers, Vibratory Screens, Motor Scrapers and Etc. Located in Falls City, TX. Vilsmeier Auction Co., Inc.

FRI. JUNE 24 - 5:30 PM Gap Auction. Antiques and Household Goods sold at every auction. Located off Rt. 41, Lancaster Turkey Hill Minit Market, cross RR bridge, Ira Stoltzfus & Son, Auctioneers.

FRI. JUNE 24 - 7 PM Public Auction of Cattle Located at Penns Valley Livestock Auction, Centre Hall, PA. Ron Gilligan, Auctioneer.

SAT. JUNE 25 - Colonial World Class Sale. Located at Stone-DeL Charolais Farms, Hartsville, Ohio. The Colonial Charolais Association. Managed by Buzz Garey, Gary Cattle Sales, Inc., 100 Walnut Lane, Morrisville, PA 19067

SAT. JUNE 25 - Public Auction of Iron Working Tools, Accessories and Hardware. Located at 873 S. Railroad St., Myerstown, Leb. Co., PA. David King, Owner. Earl Buffenmeyer, Auctioneer.

SAT. JUNE 25 - 9 AM Public Auction of Real Estate, Farm Equipment, Tractors, Corn, Straw, Hand and Barn Tools, Antiques and Household Goods. Located along Anchor Rd., R.D. 1, Washington Boro, Manor Twp., Lanc Co., PA, take Rt. 999 west of Millersville to Central Manor Store,

turn left and go to Anchor Rd. and turn right to sale. Lizzie S. Sauder Estate. Howard Shaub and Roy C. Probst, Auctioneers.

SAT. JUNE 25 - 9 AM Public Auction of Real Estate, Farm Equipment, Antiques and Households. Located on Rt. 443, approx. 1 mi. east of Rt. 183 and 443 intersection in RD 3, Schuylkill Haven, Sch. Co., PA. Estate of Edward Kramer. Jay Riegel, Jr., Auctioneer.

SAT. JUNE 25 - Public Auction of Chippers, Line and Const. Equipment and Vehicles. Located in Edison, N.J. Vilsmeier Auction Co., Inc.

SAT. JUNE 25 - 11 AM Public Auction of Horses.

Located at Keister's Middleburg Auction Sales, Inc., Rt. 555, 3 mi. east of Middleburg, PA, 5 mi west of Selingsgrove, PA. Don and Walt Keister, Owners. Ray Long and Dave Imes, Auctioneers.

MON. JUNE 27 - Public Auction of Cattle. Located at the farm, near Ghent, NY. Fleetwood Angus Ltd. Col. Jack Parnell and Col. Mike Jones, Auctioneers.

JULY

SAT., JULY 2 - Public Auction of Antiques, Tools and Personal Property. Located along Bowmansville Rd., 1/2 mi north of Bowmansville. Lester Gehman and Mamie Musser, formerly Silas Gehman Property. Owners. Randal V. Klme, Lloyd H. Kreider and Roy Good, Jr., Auctioneers.

MON. JULY 4 - 12:30 PM Public Auction of Cattle. Located at Shippensburg Fairgrounds,

Shippensburg, PA
Cumberland Valley Jersey Breeder's Sale. Ralph Horst, Auctioneer

WED. JULY 6 - 1 PM Firecracker Ayrshire Sale, Carlisle Fairgrounds,

Carlisle PA, Milt Brubaker, Sales Manager.

THURS. JULY 7 - Monthly Cow Sale at Mel Kolb, Inc. Lancaster Farm, 2220 Dairy Road, Lancaster, Pa.

EVENING DAIRY COW SALE

FRI. EVENING, JUNE 10, 1983
7:30 P.M. Sharp

Selling at Kling's Sale Barn, located 12 miles, North of Carlisle on route 74, 2 1/2 miles N.E. of Landisburg, Perry Co., Pa.
60 HEAD DAIRY CATTLE 60
Featuring: 30 Head of Registered Canadian Holstein Cows & 1st Calf Heifers - All recently fresh or close springers.

"Personally Selected for Type & Production" Mostly A.I. Sired and Bred - Cattle that will Milk and Stay in the Herd.

10 Holstein Grade Heifers from one herd that are all recently fresh.

8 Registered Guernseys in all Stages of Lactation.

Registered Jersey fresh with 2nd calf - Milking well.

A Straight-Pine Elevation Pete - 2 yr. old - Fresh from GP Dam and Ex Granddam.

Several Top Grade Cows that are milking in the 80's.

2 Service Age Sires -
1 E.T. Son of Wilbar Gillbrook Contender from an EX Bootmaker Dam with 35,000M - +1948 Index.
1 an I-O-State Chief Ford Son out of a VG Dam with Index +1311

Owner,
V. ART. KLING
(717) 789-3883

Mark Glick, Auctioneer
Fred Naugle, Pedigrees

WILLIS FARMS HOLSTEIN SALE

TUESDAY, JUNE 7, 1983
At 12:00 Noon

At the farm in Cumberland Co., 3 miles west of Newville, Pa. on Route 533, then 1 mile south on Willis road. Or off Route 11 toward Oakville, then right on Big Spring road 1 mile.

65 HOLSTEINS
SOME REGISTERED - 3 STEERS -
30 DAY TESTS FOR BANGS AND TB
LEPTO SHOTS - PREGNANCY EXAMINED

23 young cows and first calf heifers in milk. Some fresh, others due June and July. Good udders. 20 heifers to freshen from June on thru summer. 14 open yearlings. 8 under one year. Many are sired by bulls in the various studs. A real good offering to choose from. 3 nice steers.

GEORGE M. WILLIS, Owner
R. 4, Newville, Pa.
Phone 717-776-3709

Lunch at sale
Art Kling
Ralph Horst, Auctioneers
Fred Naugle, Announcements

PETER BUTKUS COMPLETE GRADE HOLSTEIN HERD DISPERSAL

Out of Conn. Consigned by Johnny Jr.
TUESDAY, MAY 31, 1983
7:30 D.S.T.

To be held at Smoketown Quality Dairy Sales Co., Smoketown, PA. Rt. 340. 5 mi. E. of Lanc., 5 mi. W. of Intercourse.

Twenty Five Head, All home raised, Sired and bred by Eastern Bulls. Cows just fresh and milking 50 lbs. to 70 lbs. per day. Cows due July, Aug., Sept. & Oct. and still milking heavy. Herd sold due to illness of owner.

One load of fancy Reg. & Grade Canadians (15 Reg.) Some just fresh others due Aug., Sept. & Oct.

One fancy load of cows and heifers out of New England states milking 60 lbs.-90 lbs. per day. Consigned by Johnny Jr.

Reg. Born 4-9-81. Dixie-Lee Elevation DAN - +1258m. +31F. Daugh. Avg. 17,627m. 603F. - (Show Heifer). Dam - LA-DALE FORTY NINER CELIA V.G. 85 pts. - 6 yr. 5 yr. - 305d. 18,430m. 577F. 6 yr. 2m. 305d. 18060m. 597F. 7 yr. 2m. 305d. 21,210m. 737F. 8 yr. 4m. 305d. 20,640m. 681F. - Bred to Penn Gate Appollo Champion. Sire- Hilltop Appollo Ivanhoe +811m. +39F. Daugh. Avg. 16,569m. 3.78%.

Reg. Born 3-18-81 - Shanghigh Boss Citation M. - Vacc. +758m. +12F. Daugh. Avg. 16,269m. With a heifer calf by Whittier - Murch Rocket Special +1043m. +27F. Daugh. Avg. 16,201m.

Reg. Holstein Bull - Born 3-27-81 - Sire- Ocean View Sexation +1407m. +61F. Daugh. Avg. 19,037m. 3.71% 707F. Dam- Pawnee Farm Arlinda Chief Ex91-3E - 2 records over 24,000m. over 900F. Gr.dam - Penstate Starman V.G. 87 pts.

Grade Holstein Bull - Triple Threat - Dam Ex93 - 2 E. 2 records over 21,000m.

Cows milked at regular time.
Cash or good check night of sale.

Managed by
SMOKETOWN QUALITY DAIRY SALES CO.
GORDON & HELEN FRITZ

717-393-0930

Carl Diller - Paul Snyder, Auctioneers
Henry Kettering, Pedigrees

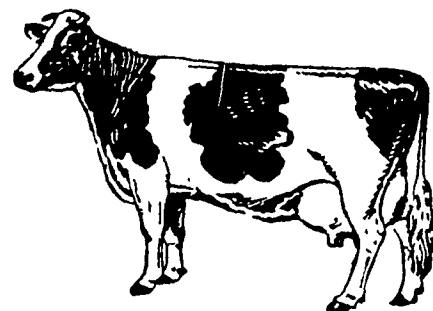
Lunch Wagon by Sublette's



NEW HOLLAND SALES STABLES

12 miles East of Lancaster off Rt. 23

ANNUAL REGISTERED HEIFER SALE
APPROX. 400 HEIFERS - ALL AGES
SAT., JUNE 4 at 10:00 A.M.
SMALL CALVES, OPEN HEIFERS, BRED HEIFERS
SPRINGING HEIFERS, SOME FRESH
Many with full pedigrees



Some early consignments include:

From Keith Olin: 30 calves and heifers selected from the better Lanc. Co. herds - 3 PAWNEE FARM ARLINDA CHIEF daus.; 3 CHAIRMAN; 2 PERSUADER; 1 ELEVATION.

1— An Oct. '82 ARLINDA CHIEF dau. due July to VALIENT, her dam a VG ELEVATOR dau. with EX mammary - 5-yr.-old 22,235m and 811f. Projected over 25,000m 900f as a 6-yr.-old.

2— CHAIRMAN dau., born Oct. '82, her dam VG 88 FLEETRIDGE MONITOR, with EX mammary - 5-yr.-old 284-day record 21,724m and 845f.

3— HARRISBURG GAY IDEAL dau., born Aug. 1982, her dam and EXCELLENT APOLLO dau. with 305-day record 13,908m and 4 percent 759f. — Lifetime 114,587m and 441f.

3— PULANSKI PERSUADER dau. born Oct. 1982 with an EX dam — 3-yr.-old record — 16,720m and 580f.

5— MOLLY CHIEF dau. born Sept. 1981 bred to SWD VALIENT, her dam 1-yr.-11 mos. — over 19,000m and 633f. Second dam VG ELEVATION, third dam VG 87 WHIRLHILL KINGPIN.

6— SWEET HAVEN TRADITION calf born Jan. 83 — dam VG 87 with 19,000m and 641f. Second and third dam VG.

7— ELEVATION dau. born Oct. 81 due to VALIENT, her dam GAY IDEAL with 2-yr.-old record 19,000m and 685f. Second dam VG with over 26,000m and 1,978f.

From Stonehurst Farm — 25 heifers, all ages: Sires include — MILESTONE, SEXATION, BOOTMAKER, WILLOW, MARVEX, GEMINI, CAVALIER, TRUMP, also 2

Most heifers are calfhood vaccinated and tested for interstate shipment.
Trucks and Motels Available — Catalogs day of Sale

New buyers need credit reference.

For more information contact:

Abe Diffenbach (717)-354-4341 (Sales Barn) or Norm Kolb (717)-397-5538 (Home)

ROBERT W. "BOB" AUMAN ESTATE

PUBLIC AUCTION

CARPENTER POWER & HAND TOOLS
HERSHEY & DUTCH DAY ITEMS
FURNITURE - ANTIQUE TOOLS - ANTIQUES
SATURDAY, JUNE 11, 1983
9:00 A.M.

Auction to be held on the premises located at 1703 Fishburn Road, Hershey, Dauphin County, Pa. From Hershey go south on Homestead Rd. and turn right onto route 743 to first home on right or south of Hershey on rt. 743 to last home on left before Homestead Rd.

Rockwell 18" planer; Craftsman 8" table saw, Atlas 36" lath, Craftsman 6" table belt sander; Atlas 6" jointer; Craftsman 4" jointer, Delta Homecraft jig saw, small Sears table saw; port air compressor, Power King drill press, Delta Rockwell band saw, dust collector with outside storage bin, Rockwell 43-501 overarm router-shaper, 1/4" & 1/2" elect. drills, Rockwell-Delta sander, 20th Century arc welder, Rockwell 505 vibrating sander, Stanley 4 1/4" circ saw, Echo chain saw, asst. elect. power tools, hand saws, hammers, files, levels, pipe clamps, c-clamps, 1/4", 3/8" & 1/2" socket sets, hole saws, planes, pliers, squares, Starret 99F transit, hand brace, measures, chisels, lots of drill bits, masonry tools, sandstone grinder, wall paper tools, spray guns, elect. supplies and tools, asst. lumber, lots of hardware, wooden and metal toolboxes, 2 sided oak workbench with drawers and doors, creeper, paint brushes, trouble lights, miter saw and lots of unmentioned carpenter tools and supplies

CANVAS EQUIPMENT Marman commercial sewing machine, grommets, tools, etc., 2 sled snowmobile trailer, 2 motorized golf carts (1 needs repairs), new 82 gal hot water heater, bicycle, Westinghouse sewing machine, Motor Boat, Mechanics and Popular Science magazines, 2&3 prong forks, Lovell washer wringer, large old wooden toolbox, Stanley #55 plane w/approx. 50 asst. molding and edge blades, wooden mallets, chisels, brace, axes, squares, wooden molding and edge planes, draw knives, Button Machine Co. press, wooden file cabinet, 15 drawer oak file cabinet, old wooden storage cabinets, paper cutter, hand augers, scribe and other unlisted antique tools

Ornate oak doorway divider, marble game, 3 car Lionel passenger train set, PRR lock, railroad light, Royal Crown Cola thermometer, coke crates, picture frames, swivel desk chair, Sessions regulator clock, Hubley pull toys inc Ducky Wucky and Mary's Lamb, mahogany desk and chair, asst. badges and buttons, Alpine floor safe and hanging antique 3 shade light

PENCIL COLLECTION — 100's & 100's of advertising pencils and pens

DUTCH DAY AND HERSHEY ITEMS - 56, 58, 59, 62, 64, 65, 66, 70, 73, 77 & 79 souvenirs, lots of glass prints of Hershey and other asst. items Daisy BB pistol, Mossberg 22 model 640KC bolt rifle

NOTE Super clean, well taken care of items SALE ORDER Small tools and shop items 12:00 - large power tools approx 1:30

Hershey items, antiques and pencil collection
TERMS Cash - Check only if known to auction firm.

Conditions by
TREVA AUMAN
Harry H. Bachman - Auctioneer 867-1809
Food by Farm Women Group 14