

Sale Reports

A Holstein Dairy Dispersal was held May 19 by Guy Bush, R.D. 1, Damascus, Wayne Co., Pa.

The top selling cow brought \$1295 and the average of the 27 cow herd was \$1000. The bred heifers averaged \$850 and the yearlings sold for about \$400.

Merton L. Bunnel was the auctioneer.

XXX

A Public Sale of real estate was held May 21 by Gloria I. Smith, 3 1/2 miles northeast of Doylestown, Franklin Co., Pa. at Dry Run.

The 90 acre farm located adjacent to State Game lands had 23 acres under cultivation, 7 acres fenced pasture, balance timbered

mountain land, 2 story frame dwelling, bank barn and other out-buildings. It was sold for \$65,500 to a Reading man.

Auctioneers were Speer and Speer.

XXX

A Public Sale of real estate was held May 19 for the Ruth I. Stoner Estate, at 363 E. Fulton St., Ephrata, Pa.

The 1 1/2 story asbestos sided dwelling was sold for \$24,100 to Edwin Martin of Denver, Pa.

T. Glenn Horst and Timothy G. Horst were the Auctioneers.

XXX

A Public Sale of personal property was held May 2 along Route 272, south of Buck, Lanc. Co., Pa. for the Edna Giffing Estate.

Some prices included: piano \$710, riding lawn mower \$275, 3 pc. bedroom suite \$245, sofa \$110 and upholstered loveseat \$115.

Randal V. Kline, Lloyd H. Kreider & Roy Good, Jr., Auctioneers.

XXX

A Public Auction of household goods and tools was held May 21 by Melo and Irene Cammauf, 327 Meadow Valley Rd., Lititz, Lanc. Co., Pa.

Some prices were: Case 220 tractor w/mower \$2130, Case snowblower \$250, dump cart \$95, organ \$285, wall china \$90 and toy car \$35.

John E. and Paul E. Martin, Auctioneers.

XXX

A Public Sale of personal property was held May 18 by Mrs. Marion B. Krebs and Charles I. Burch at the Lemaster Community

Center, 14 miles southwest of Chambersburg, Franklin Co., Pa.

Some prices included: walnut single bed \$130, walnut double bed \$230, walnut dresser w/marble top \$375, 3 pc. walnut bedroom suite \$325, walnut child's crib \$185, Windsor chair \$285, tea cart \$200, walnut blanket chest \$350 and early paneled oak blanket chest \$760.

J. Robert Meyers was the auctioneer.

XXX

A Public Auction of farm machinery was held May 20 by Kenneth R. Phillips, John F. Phillips, Denzil W. Lane and Nancy L. Lane at 175 East Kercher Ave., Lebanon, Pa. There was a good attendance at the sale with buyers from N.Y. & N.J.

Some prices were: A.C. 5040 D tractor \$2700, N.H. 451 mower

\$700, N.I. #402 rake \$575, Model 70 2-B plow \$325, N.I. 1-row corn picker \$360, N.H. #68 baler \$370, Int. 4-row corn planter \$550 and N.I. 24' elevator \$175.

Auctioneers were Nelson L. Ebersole and Ira R. Shoop.

XXX

A Public Auction of farm machinery was held May 14 by Maple Lane Farm, 2208A & B, Buckeystown, Maryland in Frederick County.

Some prices were: Int. 450 4 x 16 Reset plow \$1175, 1982 735 Vari-width plow \$7750, N.H. Super 717 field harvester & 717R head \$1050, 2 IHC #51 silage wagons w/IHC 70 running gear \$620 each, IHC #510 rotary mower \$1350, Brillion cultipacker seeder #120 \$1050, and N.H. 273 baler w/kicker \$3950.

Trout Auctioneers, Inc. conducted the sale.

A Public Sale of household goods was held May 21 by Mrs. Edna M. Charles, 1/2 mile southeast of Highville, Manor Twp., Lanc. Co., Pa. There was good attendance at the sale.

Some prices were: Farmall Super A

w/plow & cultivator \$2125, iron trough \$40, sawbuck \$45, J.C. Penney automatic washer \$355, J.C. Penney dryer \$200, Frigidaire refrigerator \$215, gas stove \$95, piano \$55 and butter scales \$37.50.

J. Everett Kreider was the auctioneer.

PUBLIC AUCTION

VAL. HOUSEHOLD GOODS, ANTIQUES, TRUCK, TRACTOR, ETC.

4 miles N. of Montoursville, 4 miles S. of Warrensville near Kramers Pond. Auction arrows off Rt. 973 in Warrensville.

SATURDAY, JUNE 4, 1983

Starting 10:00 A.M.

Fancy Walnut hall vanity; Jenny Lynn Bed; Childs Oak roll top desk; Pine 1 drawer nightstand; McD. 1 1/2 hp. Hit & Miss engine w/buzz saw mounted on chassis; 2 Nova water cooled engines; Pine blanket chests; Fancy hall rack; 2 oak princess dressers; oak washstand; cherry empire chest drawers; Bamboo sewing stand; buffet; Boston rocker; cupboards; small pine corner cupboard; cook stove; wicker organ stool; old locks; tin coffee grinder; cutter sleigh; scales; flat trunk; original old newspaper marked Forneys War press - 4-22-1865 about Lincolns assassination; other old newspapers; books; Curly maple 4 string banjo; 5 string banjo; CI waffle iron w/4 designs; cherry pitter; candle snuffer; draw knife; spoke shaver; 3 pocket watches - 1 gold; ox yoke; some sterling; lots of picture frames; chairs; Reed & Barton 5 pc. caster set; Glassware inc. some depression - Royal Doulton Jester plate; etc. 5 pc. maple dinette set; camper ice refrigerator; Whites GM564 metal detector; 8000 btu air conditioner; lots more. 66 Ford F-300 dump truck-road worthy; 54 IH L160 truck; Copar Panzar tractor w/snowplow, disc, harrow; 8000 lb. tandem trailer-pintal hitch; sgl. axle trailer; 10' dump box trailer-pto; cherry & walnut lumber; walking tractor; battery charger; traffic line painter; 2" water pump; much more tool type items; etc.

Owners
LAMAR BOWMAN &
Estate of Vera A. Bowman

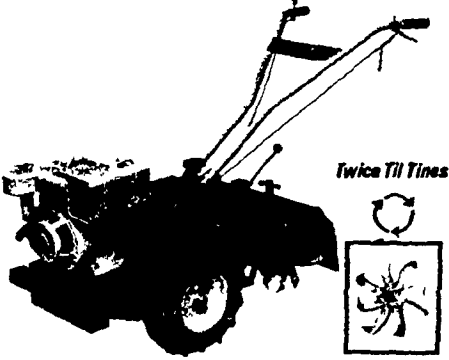
Conducted by
Fraleigh Auction Co.
546-6907

Lunch-tent if inclement.

PRO-TIL...The New Concept In ROTOTILLING

AnPro
THE TILLER PROFESSIONALS

Featuring:
Counter Rotation
or
Regular Rotation
all by just a
flip of the lever



- 4 Rear Tine Models From 5 H.P. 18" to 8 H.P. 22" at up to \$300 less than the competition
- Front tine models w/twice till tines up to \$100 less than the competition

Sold only through servicing dealers listed below

ADAMS CO.
STAUB'S MOWER SERVICE

Box 72
Ardentville, Pa. 17303
712-677-8444

BERKS CO.

A.C. BERNET, INC.

1121 Benjamin Franklin Hwy.
Birdsboro, Pa. 19508
215-582-8103

WEAVER'S HARDWARE

R.D. #4125
Fleetwood, Pa. 19522
215-744-3648

744-7868

CHESTER CO.

STOLTZFUS FARM SERVICE, INC.

Box 295, Rt. 41 & 10
Cochranville, PA 19330
215-593-2407

DAUPHIN CO.

JIM'S LAWN MOWER SERVICE

631 N. Mountain Rd.
Harrisburg, Pa. 17112
717-545-5114

TETER'S SALES & SERVICE

R.D. #1
Millersburg, Pa. 17061
717-362-8501

FRANKLIN CO.

A.A. LAWN SERVICE

3989 Lincoln Way West
Chambersburg, Pa. 17201
717-369-5111

GETTEL'S FARMS

Star Route 3 Box 6
Shippensburg, Pa. 17257
717-532-9271

LANC. CO.

GOOD'S LAWN & GARDEN CENTER

R.D. #2
East Earl, Pa. 17519
717-354-0076

A.L. HERR & BROS. FARM EQUIP.

312 Park Ave
Quarryville, Pa. 17566
717-786-3521

E.M. HERR FARM & HOME SUPPLY

R.D. #1
Willow St., Pa. 17584
717-464-3321

J.B. HOSTETTER & SON

35 West Main St.
Mount Joy, Pa. 17552
717-653-1841

LAWN CARE OF PA.

Box 25
Martindale, Pa. 17549
717-445-4541

LIMEVILLE SALE & SERVICE

R.D. #1 Box 267
Gap Pa. 17527
717-442-9304

ROMAN MUSSER

11 Picnic Woods Rd
Rothsville, Pa. 17543
717-626-6363

SHOTZBERGER'S MACHINERY

Elm, Pa. 17521
717-665-2141

LEBANON CO.

MARTIN'S HDW. & EQUIP. CO.

Rt. 501
1 1/2 mi. South of Schaefferstown
R.D. #1 Newmansstown, Pa.
17073
717-949-6817

SWOPE & BASHORE, INC.

R.D. #1 (Frystown)
Myerstown, Pa. 17067
717-933-4138

LEHIGH CO.

KERMIT K. KISTLER

99 Kings Highway
Lynnport, Pa. 18066
215-298-2011

LYCOMING CO.

CLARK'S FARM SUPPLY

3245 Lyscoming Creek Rd
Williamsport, Pa. 17701
717-494-0660

MIFFLIN CO.

PEACHEY'S SAW SHOP

R.D. #1 Box 2718
Belleville, Pa. 17004
717-935-2833

MONROE CO.

WEST END ENGINE SERVICE

Rt. 209 Box 34
Gilbert, Pa. 18331
215-681-5419

NORTHUMBERLAND CO.

BURKHOLDER'S VALLEY VIEW SHOP

R.D. #5 Box 326
Danville, PA. 17821
717-275-3267

PERRY CO.

R.E. DAVIDSON & SON

R.D. #2 Box 96
Millerstown, Pa. 17062
717-444-3670

SNYDER CO.

R.E. DAVIDSON & SON

R.D. #2 Box 26 Rt. 11-15
Selinsgrove, Pa. 17870
717-374-8590

MARTIN'S PRO HARDWARE

Star Route
Richfield, Pa. 17086
717-694-3220

UNION CO.

MARTIN'S SMALL ENGINE REPAIR

R.D. #3
Mifflinburg, Pa. 17844
717-966-2545

YORK CO.

COSTA'S LAWN & GARDEN EQUIP.

R.D. #1
New Freedom, Pa. 17349
717-235-3287

PAUL SHOVER INC.

35 E. Willow St.
Carlisle, Pa. 17013
717-243-2686

W.L. STERNER

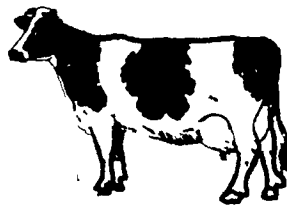
516-518 Frederick St.
Hanover, Pa. 17331
717-637-2159

NEW CASTLE CO., DE

MYER'S LAWN & GARDEN

R.D. #1 Box 100
Middletown, Del. 19901
302-378-2849

WINDY-
MAPLE
COMPLETE
DISPERSAL



Located at Rose Valley Lake
Watch for auction arrows off Rt. 15, 6 miles north of Williamsport, go approx. 8 miles after you leave Rt. 15, also watch for auction arrows from Trout Run.

FRIDAY, JUNE 10, 1983

At 11:00 Sharp

80 Registered and High Grade Holsteins
Approx. 60 Registered and 20 High Grade 5-6-83
rolling herd average 14,646M, 3.8T, 551F.

Also a full line of machinery.

Owners

CHARLES E. AND DEBRA KEISS

Sales Managers, Gordon and Ron Wood
Mansfield, PA 717-549-4901

For the most in advertising coverage and preparing your sale call
Woods Auction Service.

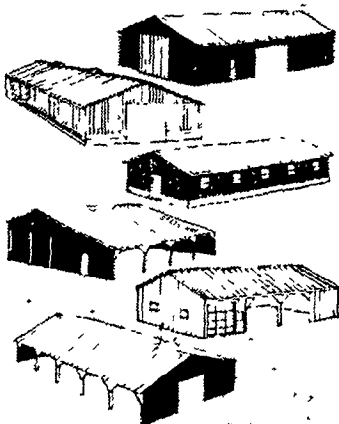
INSULATION

Distributor For

R. MAX URETHANE

(4x8 or to your spec)

- ★ FIBERGLASS ROLLS
- ★ BLOWN IN



ETTERVILLE SALES

RD2, Box 267, East Earl, PA 17519

Call us for low prices -
(717) 354-7561

WHEELING CHANELDRAIN ROOFING & SIDING

Colors In Stock:

- White
- Gold
- Brown
- Tan
- Silo Blue
- Red
- Avocado Green
- Plain Galvanized
- Light Green

Distributor For
ALUMAX ALUMINUM ROOFING & SIDING

COMPLETE POLE & OTHER BUILDINGS

TRUSSES



A Few Prime Dealer Areas Available. Call
LAWN CARE DISTRIBUTORS
215-445-4542