

ITA says PRC dumping mushrooms

KENNETT SQUARE — The American mushroom industry has received the welcome news that the International Trade Administration (ITA) released its preliminary determination in favor of the industry. The ITA has determined that PRC is dumping (sales at less than fair value) canned mushrooms into the U.S. market. If the ITA sustains the preliminary decision it could result in the imposition of dumping

duties up to 55.26 percent. Jack Kooker, Executive Director of the American Mushroom Institute in commenting on the ruling said, "we welcome this favorable decision, and view with optimism the final decision by ITA which is to be made by August 1. Knowing fully the large number of other industries that have petitioned for import relief under the anti-dumping section of the trade act, the less than 10 percent that are

ruled favorable and the current "free" trade attitude of the administration, this action by ITA takes on added significance." According to Attorney Myron Solter, for the petitioner, Four "H" Company, "Today's decision by the ITA operates to commence the final injury determination by the International Trade Commission (ITC) which the ITC has scheduled to proceed paralleled with the concurrent investigation of AMI's request for an extension of the

present 10 percent import relief duty on canned mushroom imports from all sources." Public hearing before the ITC is scheduled for August 2, 1983 on this case, with final vote scheduled for the week of August 22 nd. If the ITA confirms its preliminary determination by a final ruling, and if the ITC finds that the domestic mushroom industry has been materially injured, a dumping order will be issued against PRC imports and probably will be in effect for a

minimum of 5 years. The amount of dumping duty will be redetermined each year by the ITA based on PRC prices for that year. "Historically importers have been deterred from purchasing products that are under a dumping order, and these mushrooms from PRC would fall within that category," added Kooker "and this ruling shows that despite an industry that is comparatively small, we can still have an effect on trade policy."

Md. tobacco averages \$1.50/lb.

ANNAPOLIS, Md — The 1983 Maryland tobacco auction season ended May 12 with a total of 38,304,628 pounds of Type-32 leaf being sold for a season average of \$1.50 per pound.

High volume brought cash receipts to tobacco growers to a total of \$58,542,330.54 which represents a new, all time, dollar high for Maryland tobacco sales season.

However, according to preliminary figures, farmers had to sell some 5,046,160 additional pounds of tobacco in 1983 to push total receipts a mere \$508,331.89 over the 1982 pace.

Due to the larger amount of tobacco to be sold this year the Maryland State Tobacco Authority extended the auction season by one week.

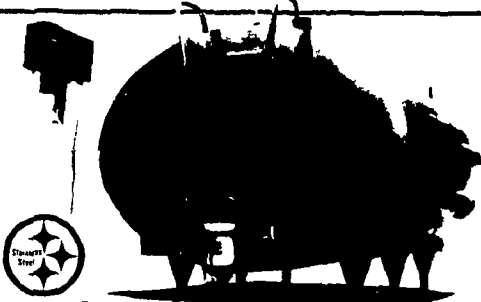
Dramatic evidence of a market burdened by a large supply of tobacco is apparent in comparing the season averages for the two years. The 1983 average of \$150.55 per hundred pounds is \$23.91 off the 1982 season average of \$174.46 per hundred pounds.

Tobacco is Maryland's most traditional cash crop having been produced in the state since colonial times and much of it moves in the export trade. Tobacco ranks third, behind corn and soybeans, in terms of cash returns to farmers for field crops.

MUELLER HiPerForm

"The Ultimate Measure of a Cooler's Worth is its Performance!" . . . and when you put your milk in a Mueller HiPerForm

...its like Money in the Bank!



Mueller Model "OH" Milk Coolers not only look good, they offer the ultimate in sanitary design and are 100% stainless steel!

The HiPerForm Electronic Refrigeration Washing System has a new look and new features!

- Alarm Circuit
- Pre-start Control
- Agitate Time Switch
- Automatic Interval Agitator
- Manual Bypass
- Digital Display
- Digital Temperature Readings

FIELD SERVICE TRAINED DISTRIBUTORS offer INSTALLATION and 24-HOUR SERVICE to ensure the safekeeping of your milk!

USED TANKS

≥1000 Gal. Mueller
500 Gal. Vacool 700 Gal. Mueller
600 Gal. Mojonnier
OTHER USED TANKS AVAILABLE

24 HOUR SERVICE

GEORGE M. PRIEST, JR. & SONS
RD 8, Box 142 Hagerstown, MD 21740
301-797-3921 or 301-733-6661

TIRED OF CLEANING AND REFILLING SUPPLEMENTARY FOUNTS?

SWISH
watering systems

SWISH WATERING SYSTEM IS THE ANSWER!

Their chick-size waterer solves man-size problems.



New SWISH SATELLITE™ system waters chicks and poults from day 1

The biggest problem with founts and other supplementary waterers is manpower — the labor needed to clean and hand-fill them. Also, birds don't always get clean, cool, fresh water — which can cause health problems and poor feed conversion.

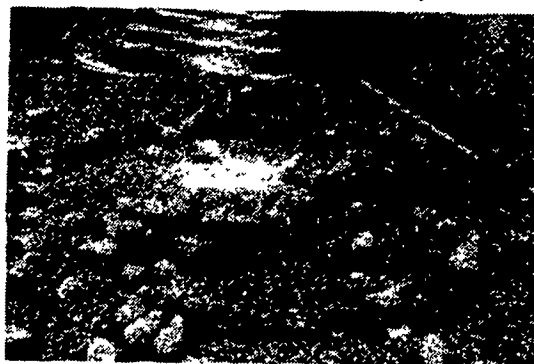
But now there's the new Swish SATELLITE system.

It attaches to any Swish floor watering system (and most other brands, too), to give you an automatic system that baby birds take to immediately.

And your birds get fresher, cleaner, cooler water that they love to drink. Which means they'll drink more of it. And that means healthier birds.

The Swish SATELLITE also cuts water waste — which means drier litter, less disease.

Whether you're choosing Swish's new SATELLITE system or a complete Swish system to take birds all the way to market, you get the same patented pressure-operated long-life Swish valve. It's known for its trouble-free performance, its durability.

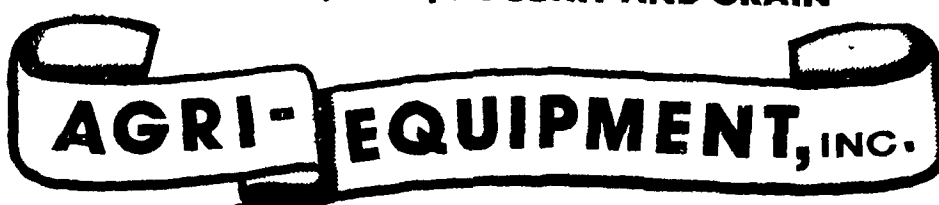


And you get the unique Swish self-cleaning cup. It saves you lots of trouble and the labor cost of frequent cup cleaning. That's because of the patented feature that causes a "swishing" action by the water from the valve. This lifts any feed particles in the bottom of the cup so birds can consume them.

Get the whole story about Swish's new SATELLITE system . . . also systems for adult birds.

The NEW SWISH — total commitment to quality & service

COMPLETE SYSTEMS, EQUIPMENT, SALES, INSTALLATION, SERVICE FOR CATTLE, HOG, POULTRY AND GRAIN



Your Authorized Swish Dealer
2754 CREEK HILL RD., LEOLA, PA 17540
PHONE: 717-656-4151
★ SERVING PA, N.J. and N.Y.

STORE HOURS:
Mon.-Fri.
7:30 to 4:30
Sat. 7:30 to 11:30