



HAY MARKETS

New Holland Hay

New Holland Sales Stables
Monday, May 9

Report supplied by auction
180 loads.

Alfalfa top quality 125.00-152.00; Alfalfa fair quality 70.00-90.00; Better loads 90.00-125.00; Alfalfa mixed a few loads 125.00-150.00; Clover timothy mixed hay mostly 80.00-120.00; two loads at 114.00, 120.00; some 65.00-80.00; Clover two loads at 70.00, 78.00; Timothy mostly 70.00-90.00; few loads up to 106.00; Straw mostly 90.00-100.00; few up to 123.00; Ear corn 100.00-114.00; one moldy load 72.00; Oats 2.85 per bushel; and Corn fodder one load at 47.00.

New Wilmington Hay

New Wilmington, Pa.
Friday, May 6

Report supplied by PDA

52 loads hay and 10 loads straw. Alfalfa 112.00-190.00; Mixed hay 69.00-107.50, some 2nd cutting 166; Timothy hay 80.00-100.00, one load 50.00; Clover few 79.00-110.00; Straw 46.00-61.00, one load 72.00; Ear Corn, one load 99.00; Barley, one load 1.72 per bushel; Oats 9 loads 1.47-1.75 per bushel.

Dewart Hay

Dewart, Pa.
Monday, May 2

Report supplied by PDA

12 loads hay and 2 loads straw. Mixed hay 63.00-80.00, one load at 46.00; Timothy hay one load at 84.00; Straw 53.00 and 67.00.

Good's Hay

Leola, Pa.

Wednesday, May 11

Report supplied by auction

173 loads. Alfalfa 50.00-110.00; Mixed hay 67.00-118.00; Timothy 75.00-85.00; Clover 50.00-71.00; Straw 47.00-145.00; Corn 72.00-122.00; Corn fodder 36.00-61.00.

Green Dragon Hay

Ephrata, Pa.

Monday, May 9

Report supplied by PDA

55 loads hay and 28 loads straw. Alfalfa 89.00-141.00, few down to 78.00; Mixed hay 60.00-156.00, mostly 69.00-97.00; Timothy hay, few 90.00-117.00; Orchard Grass, one load 130.00; Straw 65.00-115.00, mostly 75.00-100.00; Ear Corn, 3 loads 107.00-117.00; Corn Fodder, 2 loads 50.00 and 52.00.

Pa. Grain

Monday, May 9

Report supplied by auction

Compared with last Monday's market for Southeastern, Central and South Central Pa. Corn, steady to .10 higher. Wheat, Barley and Oats unevenly steady. Ear Corn steady to \$5 higher.

Prices paid delivered to dealers dock - (All prices per bushel, except Ear Corn per ton.)

Southeastern Pa.

Corn No. 2-y range 3.25-3.55, average 3.41, New Crop 3.00-3.12; Wheat No. 2 range 3.25-3.60, average 3.44, New Crop 3.52-3.60; Barley No. 3 range 2.10-2.35, average 2.21, New Crop 2.00; Oats No. 2 range 1.80-1.90; average 1.83; Soybeans No. 1 range 6.00-6.10, average 6.08, New Crop 6.20-6.27; Grain Sorghum #2 range 2.60, average 2.60; Ear Corn range 88.00-93.00, average 90.73.

Central Pa.

Corn No. 2-y range 3.20-3.50, few reported 3.10, average 3.34; Wheat No. 2 range 3.20-3.60, average 3.37; Barley No. 3 range 1.80-2.00, few reported 2.15, average 1.99; Oats No. 2 range 1.60-1.80, average 1.72; Soybeans No. 1 few reported 6.00, average 6.00; Grain Sorghum #2

2.95, average 2.95, Ear Corn range 78.00-95.00, average 85.91.

South Central Pa.

Corn No. 2-y range 2.90-3.50, average 3.22, mostly 3.20-3.30; Wheat No. 2 range few reported 2.85-3.60, average 3.09; Barley No. 3 range 1.75-1.90, few reported 2.00; average 1.85; Oats No. 2 range 1.70-1.95, average 1.80; Ear Corn range 85.00-100.00, average 88.88.

Southeastern, Central & South Central Summary

Corn No. 2-y range 3.20-3.55, average 3.35; Wheat No. 2 range 3.20-3.60, average 3.34; Barley No. 3 range 1.80-2.35, average 2.05; Oats No. 2 range 1.65-1.90, average 1.77; Ear Corn range 80.00-95.00; average 88.47.

Western Pa.

Corn No. 2-y range 3.05-3.30, average 3.13; Wheat No. 2 range 3.00-3.20, average 3.11; Barley No. 3 range 1.85-1.90, average 1.88; Oats No. 2 range 1.60-1.75, average 1.66; Ear Corn range 75.00-83.00, average 77.67.

Regional Hay

Friday, May 6

Report supplied by PDA

Hay uneven, straw steady to 10.00 higher.

Alfalfa 100.00-125.00; Mixed hay 70.00-100.00; Timothy hay 70.00-85.00; Straw 50.00-85.00; Mulch 30.00-45.00, few 60.00.

Kiester's Hay

Middleburg, Pa.

Tuesday, May 10

Report supplied by auction

34 loads. Timothy 55.00-60.00; Mixed hay 45.00-77.50; Alfalfa 75.00-107.50; and Straw ten loads 50.00-77.50.

Frederick Co. Hay

Buckeystown, Md.

Thursday, May 12

Report supplied by auction

26 loads; market steady to 10.00 lower.

Alfalfa 3 good 114.00-141.00, 2 fair 96.00, one damaged 64.00; Timothy 2 good 87.50 & 100.00, 5 fair 61.00-76.00; Mixed 3 good 84.00-90.00, 3 fair 59.00-62.00; Barley straw 82.00; Oat Straw 63.00 & 78.00; dark Wheat Straw 71.00; Ear Corn 92.00.

SPECIAL NOTICE
VINTAGE SALES STABLES, INC.
10 miles East of Lancaster
Paradise, PA
HAY, STRAW & GRAIN
AUCTION

Every Thursday at 1:00 P.M.

Business Phone
717-768-8204
Home Phone
215-458-8518

LOUIS LYONS & SON

Consign your cattle and hogs, feeder pigs & calves to Louis Lyons & Son. They offer choice service, excellent sorting & marketing of your livestock.

Charles Diller, Manager

Phone 394-7915

Burnell Siegrist - Buyer & Seller

Phone 626-8653

Experienced
Personnel

Immediate
Weighing

NEW HOLLAND SALES STABLES, INC. - THE ACTION AUCTION

MONDAY

FAT HOGS

EARLY BIRD HOG SALE

For Your Protection Your Hogs Must
Be Identified

10:00 AM

HORSES MULES

11:00 AM

**HAY
STRAW
GRAIN**

**1:30 PM
BEEF SALE
CALF, SHEEP,
GOATS**

WEDNESDAY

12:00 NOON

DAIRY COWS

HEIFERS, BULLS

NEW HOLLAND SALES STABLES, Inc.

12 Miles East of Lancaster
on Route 23, New Holland, Penna

The Action Auction

717-354-4341

Mgr. - Abe Diffenbach - 717-393-4464

Norman Kolb - 717-397-5538

Field Representatives

Alan Diffenbach 717-656-9806

Luke Eberly 215-267-6608 - 738-1865

WEDNESDAY

FEEDEP PIG SALE

1:30 P.M.



We endeavor to keep our
barns cleaner than yours.
State graded until 12 Noon

THURSDAY

11:00 AM

BULLS -

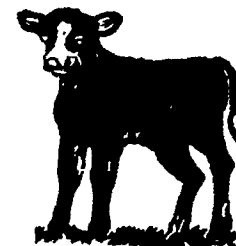


**STEERS -
BEEF COWS**



3:30 P.M.

CALVES



**SHEEP
GOATS**



Market your livestock thru New Holland Sales, your neighbor does
Pick-up your check before you leave