

York Co. DHIA

(Continued from Page D20)

Cool Branch Farm						
Bea	3	3.8	305	15,077	3.8	577
Belle	3	4.0	305	15,602	3.9	611
Erica	3	5.5	305	14,009	3.7	517
Lonnie Robinson						
Jessica	3	8.4	305	16,689	3.3	558
James W Miller						
Jean 89	3	5.8	302	20,138	3.2	650
Keith A Shatter						
Berry	3	5.6	305	20,325	4.1	827
Jody	3	5.3	305	17,854	3.2	578
Jim & Holly McCaffree						
Midge	3	7.9	305	22,068	3.7	820
David M Emig						
35	3	7.9	305	16,470	4.0	657
21	3	6.8	305	17,066	3.9	658
65	3	2.6	305	13,328	4.4	591
Mc Ral Dairy Farm						
354	3	8.6	305	19,884	3.9	783
384	3	7.6	305	18,355	3.5	638
426	3	6.1	305	15,590	4.6	718
434	3	6.3	305	22,915	2.8	638
104	3	4.4	305	20,076	4.3	856
105	3	4.6	305	16,226	3.6	578
153	3	3.10	305	13,553	4.0	544
154	3	2.11	305	21,802	3.1	670
William Ruppert						
Star	3	10.0	300	14,768	3.7	541
Eisenhart Bros						
229	3	7.1	284	15,084	3.9	582
271	3	4.9	305	20,260	3.9	791
282	3	4.0	305	16,408	3.4	555
286	3	3.10	305	18,860	3.3	620
293	3	3.8	305	18,187	3.0	542
323	3	2.9	305	16,240	3.5	574

ADA/DC sponsors Real Seal sweepstakes

In celebration of June Dairy Month, the American Dairy Association and Dairy Council is promoting a \$300,000 national Real Seal Sweepstakes. Prizes include a two week trip to Europe for four, six Chevrolet Cavalier station wagons, and six Hawaiian vacations.

The contest has been designed to draw attention to the Real Seal program, encouraging consumers to look for the seal when buying dairy products. Consumers enter by submitting the Real Seal logo from a carton of dairy food or by printing the words Real Seal on an index card. Further details are available in the dairy case.

The Real Seal symbol is a stylized drop of milk with the word REAL inside. According to Ralph L. Landsey Jr., Executive Vice President of ADA/DC, "Its purpose is to help shoppers identify real dairy products and distinguish

them from imitations in the dairy case." It is a trademark which can be placed only on genuine dairy foods produced in the United States such as milk, cream, yogurt, butter, ice cream and pizza.

The Real Seal program con-

tinues to grow nationwide, both in producer use and consumer identification. ADA/DC is hopeful that the Real Seal Sweepstakes will increase awareness of the Real Seal and the benefits of buying dairy products.

NIR to sample area forages

WEST CHESTER — The Penn State Near Infrared (NIR) Mobil forage van will be coming to the county on May 24th and 25th to test forage samples submitted by farmers and aid in ration balancing.

The van will be at the Owen J. Roberts High School the afternoon of May 24th to test samples. During the evening, the van will be available for dairy ration balancing, there at the school.

On May 25th, the van will be at

Stoltzfus Farm Machinery, Cochranville, in the morning and will move to the Oxford High School in the afternoon to test forage samples. Also at Oxford High, during the evening, area farmers can have their dairy rations balanced.

The cost of forage sample analysis will be \$8.00 and the cost of ration balancing will be \$10.00.

For more information, contact the Chester County Extension Office.

SOYBEAN ROASTING

ON YOUR FARM
DON'T WASTE IT - ROAST IT

Moldy or Musty Corn
Have it restored to usable condition
by roasting.



Make higher profits from all grains. Roasting improves TDN, destroys molds, retards toxins and removes moisture.

CUSTOM GRAIN ROASTING DONE IN PA AND SURROUNDING STATES OR OWN YOUR OWN ROAST-A-MATIC GRAIN ROASTER.

DALE L. SCHNUPP
RD 6, Lebanon, Pa. 17042
PH: 717-865-6611

ALLEN SUMMERS
RD 1
Nottingham, Pa. 19362
215-932-4761

DAVID N. GROFF
RD 1 Box 506C
Lewisburg, Pa. 17837
717-996-3593

BOB STULTZ
RD 2
New Paris, Pa. 15543
814-733-4190

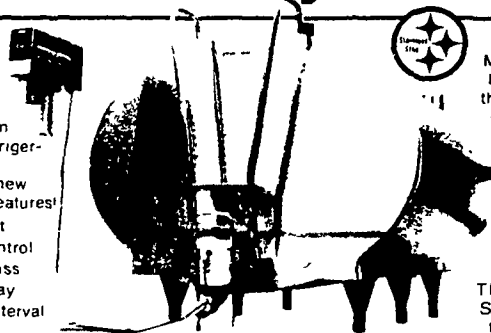
MUELLER HiPerForm

"The Ultimate Measure of a Cooler's Worth is its Performance!" ... and when you put your milk in a Mueller HiPerForm

...its like Money in the Bank!

The HiPerForm Electronic Refrigeration Washing System has a new look and new features!

- Alarm Circuit
- Pre-start Control
- Manual Bypass
- Digital Display
- Automatic Interval Agitator
- Agitate Time Switch
- Digital Temperature Readings



Mueller Model OH Milk Coolers not only look good they offer the ultimate in sanitary design and are 100% stainless steel!

FIELD SERVICE TRAINED DISTRIBUTORS offer INSTALLATION and 24 HOUR SERVICE to ensure the safekeeping of your milk!

USED TANKS AVAILABLE

MARTIN'S REFRIGERATION SERVICE

1122 Woodstock Rd., Fayetteville, Pa. 17222

Phone (717) 352-2783

Sales & Service

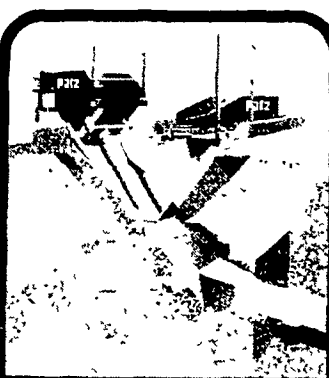


Look for the "REAL" Seal on Milk

Patz

Manure Handling Professionals

SLURRY

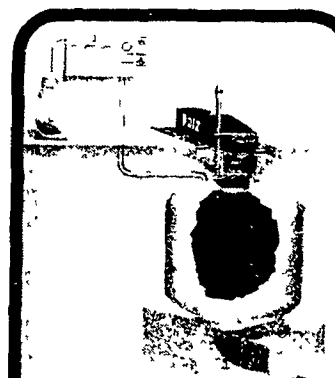


For slurry manure:

Patz Model 100 Slurry Pump

- Handle high volumes of free-flowing manure or slurry with fine-cut bedding.
- Moves manure underground through 15" or 12" PVC pipe to storage area
- Large-capacity 7" by 15" plunger and one-way valve for constant manure removal mean less cleaning time
- Stroke length offers three adjustments to match manure consistency.
- All moving parts removable for easy inspection.
- Big 84" hopper
- Ends daily hauling. Time savings and fertilizer savings pay for investment.

LIQUID



For liquid manure:
Patz Model 200 Air Manure Mover

- Compressed air moves free-flowing liquid or slurry manure to storage quickly and quietly through underground PVC pipe.
- Few moving parts make the operation simple and keeps maintenance low, assuring long service life
- Control panel permits operator to agitate, pressurize and vent tank from one location. Provides in-the-barn comfort and fingertip ease of manure handling
- High-capacity 1,700-gallon collection tank.

SEMI-SOLID



For semi-solid manure:

Patz Model 300 Air Manure Mover

- Compressed air moves manure with long straw through 24" underground pipe to storage quickly and quietly
- Few moving parts assure easy service, low maintenance and long service life.
- Manure tank, compressor and controls inside building allow comfortable operation regardless of weather.
- Tank door opens and closes by air-powered cylinder.
- Easily installs and fits into most operations
- Allows handling stored manure with conventional loaders and spreaders.
- Saves valuable nutrients, cutting fertilizer costs. Pays for itself.

Patz

DISTRICT MANAGER
GEORGE HEATH

472 Woodcrest Dr., Mechanicsburg, PA 17055
717-737-0002

Contact Your Nearest Patz Dealer

ALEXANDRIA
MAX ISENBERG
814-669-4027

FORKSVILLE
DURWOOD J. WHITELEY
717-924-3460

QUARRYVILLE
UNICORN FARM SERVICE
JAMES E. LANDIS
717-786-4158

TERRE HILL
TERRE HILL SILO CO. INC.
215-445-6736

BALLY
LONGACRE ELECTRIC
215-845-2261

HAMBURG
SHARTLESVILLE FARM SERVICE
215-488-1025

MARYLAND DEALERS

BEDFORD
BENCE FARM EQUIPMENT
814-623-8601

LEBANON
MARVIN J. HORST DAIRY EQUIPMENT
717-272-0871

HAGERSTOWN, MD
TRI-STATE FARM AUTOMATION
301-790-3698

NEW WINDSOR, MD
ROOP FERTILIZER & CHEMICAL
301-775-7678

BERRYSBURG
LESTER HOCH REPAIR CENTER
717-362-8252

MILTON
LANDIS FARMSTEAD AUTOMATION
717-437-2375

KENNEDYVILLE, MD
PINDER SERVICE CO.
301-348-5263

OAKLAND, MD
SCHROCK & YODER PATZ
301-334-8517
334-9663

CAMP HILL
LLOYD SULTZBAUGH
717-737-4554

PIPERSVILLE
MOYER FARM SERVICE
215-766-8675

LINEBORO, MD
WERTZ GARAGE, INC.
301-374-2672

STREET, MD
P & S EQUIPMENT, INC.
301-452-8521