

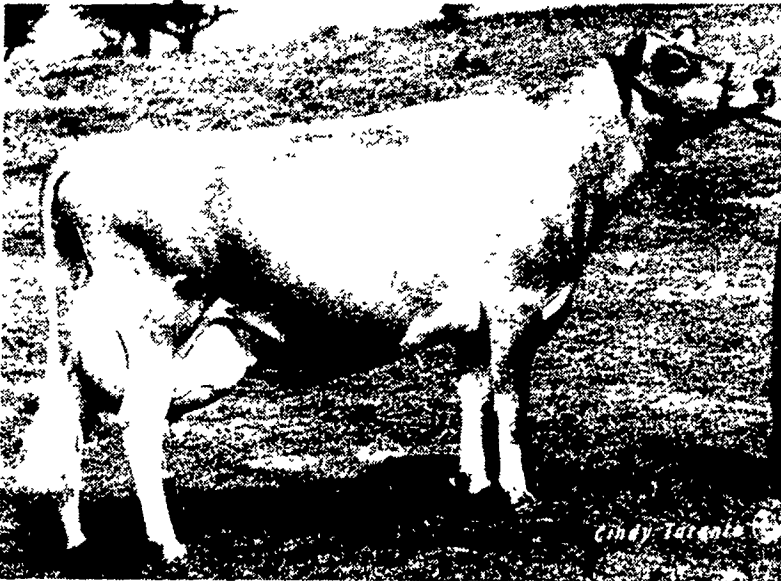
Dreisbach bull in sampling program

HAMBURG — 7J151 Wilderness Valient-ET, a young Jersey bull bred by Robert Dreisbach, of Hamburg, has been chosen to enter Select Sires Program for Genetic Advancement (PGA) sire sampling system.

Based on his outstanding pedigree, this bull calf has been designated a Super Sampler and his semen is now available to all Jersey breeders. Valient is one of very few Jersey bulls from throughout the United States to be selected as a Super Sampler in

1983.

The dam of this "Select" sire is A-Nine Sampson Valencia, a Very Good (88), high index Sampson daughter with a first lactation of 17,260M and 721F. Her maternal sister is Very Good (88) with a Cow Index of +2076M. The granddam is an Excellent (90) Generator daughter, also with a high Cow Index of +1803M. Valient is sired by Observer Chocolate Soldier. Chocolate Soldier is the sire of another of "Select's" popular Jersey bulls, Sargent Plus.



A-Nine Samson Valencia is the dam of 7J151 Wilderness Valient-ET, which has entered Select Sires' Program for Genetic Advancement.

Pa. joins National Wool Growers

SALT LAKE CITY, Ut. — The Pennsylvania Cooperative Sheep and Wool Growers Association has become affiliated with the National Wool Growers Association (NWGA). The NWGA is the oldest livestock organization

in the United States, tracing its founding back to 1865.

The application for membership was approved by the NWGA Board of Directors at their meeting in Washington, D.C., last month. Pennsylvania became the 30th

federated organization to affiliate with the national association. USDA statistics show that Pennsylvania has over 98,000 sheep and an estimated 4,900 farms with sheep on them.

NWGA Board Chairman Norman Rousselot, of Sonora, Tex., express his pleasure with the new member. Rousselot noted that Pennsylvania has 25 representatives, some of which are on key committees, and two respected senators. "We'll be able to communicate with some of these people much more effectively now," Rousselot said.

Pennsylvania was one of the charter members of the National Wool Growers Association in 1865, according to records kept in the Salt Lake City, Utah, office. They were active in wool grower affairs until the turn of the century, when the industry began to concentrate on the West.

"We're glad to have them back," Rousselot said after the unanimous vote at the April Board meeting.

ABS promotes Versweyveld

DE FOREST, Wisc. — James J. Versweyveld has been promoted to District Sales Manager for American Breeders Service, according to an announcement made by Robert W. Benson, National Sales Manager for that firm. In his new position, Versweyveld will be responsible for ABS sales activities in southern New York, northeastern Pennsylvania, and northern New Jersey.

Versweyveld was born and raised near Newburgh, N.Y., and graduated from Cornell University with a Bachelor of Science Degree. He joined ABS as a Representative Supervisor in June of 1982, after having worked for eight months with the Animal Science Department of Cornell.

Versweyveld will continue to reside near Wallkill, N.Y.



J. J. Versweyveld

Precast Concrete UPRIGHT BUNKER SILO

Featuring a single component design for fast installation and completion. The sections bolt together and the use of a sealant placed in the tongue and groove creates a sealed wall surface.

The sections may be dismantled and relocated. Customers may select any length or width in 5' 2" increments.

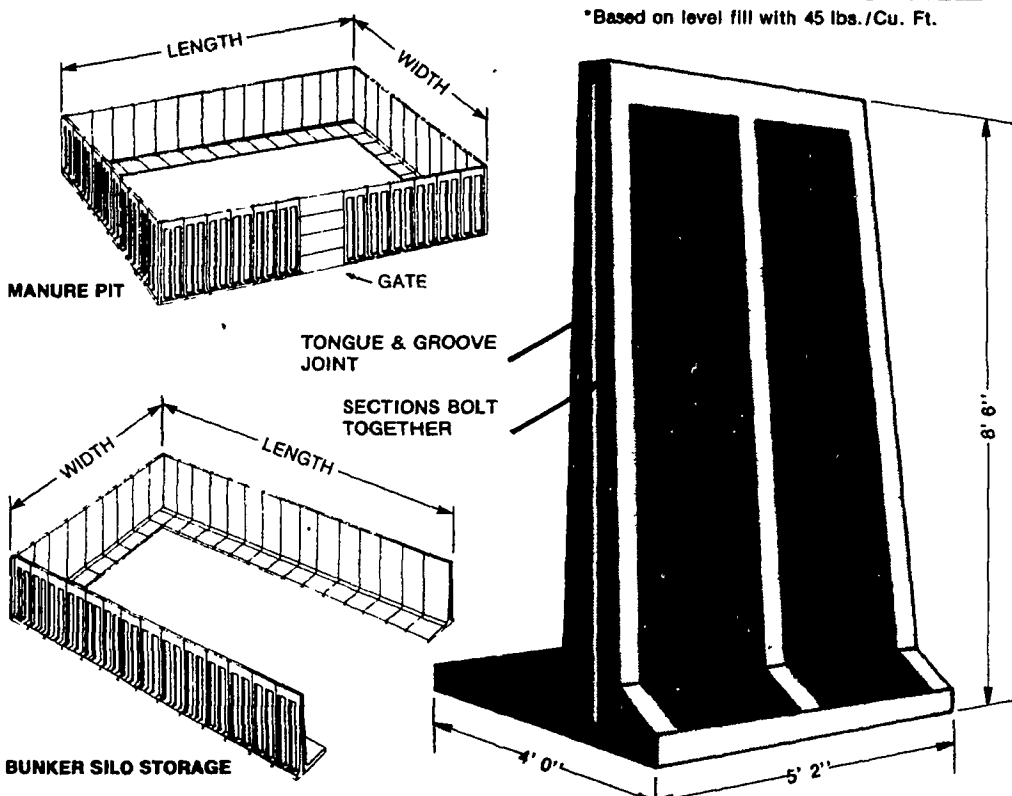
A special center wall is available to permit placing bunker silos side by side or dividing existing trench silos.

In addition to silage storage, these upright units may be used as retaining walls or manure pits.

TONNAGE TABLE FOR 8 FT. SIDEWALLS*

Length	Width			
	20'	30'	40'	50'
60'	215	323	432	540
70'	251	376	504	630
80'	287	431	576	720
90'	323	485	648	808
100'	359	539	720	900
110'	395	593	792	989
120'	431	648	864	1080
130'	467	688	936	1170
140'	503	755	1008	1260
150'	539	808	1080	1350

*Based on level fill with 45 lbs./Cu. Ft.



★ Leasing Available! ★

**Early Order Discounts
Now In Effect**



Sollenberger Silos Corp.

A Nitterhouse Company
Box N Chambersburg, PA 17201 [717] 264-9588
A Producer of Quality Concrete Products Since 1923



SPRING FARM LUBRICANTS SALE

EFFECTIVE NOW THRU MAY 25, 1983



BP VANELLUS® C EXTRA 15W-40 motor oil is the result of the latest universal oil additive technology which provides the best potential for extended oil drain intervals with less wear and cleaner engines. Its multi-grade 15W-40 characteristics make possible all-season use plus lower fuel and oil consumption.

VANELLUS C EXTRA 15W-40 excels in API Service SF-CD and exceeds the lubrication requirements for all gasoline and diesel engines in car and truck fleets of all types, and in farm, earth moving, mining and construction equipment.

55 Gallon Drums - **\$182.00**
24 Quart Cans - **\$22.98**

Vanellus MG 15W-40 is recommended for diesel and gasoline engines used in cars, trucks, farm and construction equipment. Meets API Service SF/CD

55 Gallon Drums - **\$161.00** 6/1 Gal. Jugs - **\$20.65**

BP VANELLUS® MCS-3 is a universal type motor oil for use in all gasoline and diesel engines used to power car and truck fleets of all types, and in farm, earth moving, mining and construction equipment. It provides optimum engine protection for both heavy- and light-duty service. Vanellus MCS-3 excels in API Service SF-CD and is available in SAE 10W, 20W 20 30 40 and 50 single grades.

55 Gallon Drums - **\$164.00**
24 Quart Cans - **\$21.00**

BP VANELLUS® SUPER DF provides superior lubrication protection for gasoline and diesel engines used to power construction, earth-moving and farm equipment, trucks and automobiles operating in light- or medium-duty service. Vanellus Super D & F exceeds most auto and truck makers' gasoline and diesel engine warranty requirements. Vanellus Super D & F is recommended for API Service SF-CC and it is available in SAE 10W-30 and 10W-40 multi-grades plus SAE 10W, 20W-20, 30 and 40 single grades.

Single Grade	10-30		10-40	
	10-30	10-40	10-30	10-40
55 Gallon Drum	\$163.00	\$164.00	\$170.00	
24 Quart Cans	\$20.00	\$20.00	\$21.00	

(Available in SAE 30 Only)

Eldoran UTH is a hydraulic fluid designed to function effectively in the complex lubrication systems of modern tractors. In these systems the same lubricant may be called upon to serve the hydraulic system, torque converter, transmission, and differential. Eldoran UTH is a virtually universal tractor hydraulic oil. It can be used for makeup or refill in most tractors.

55 Gallon Drums - **\$184.00** 5 Gal. Cans - **\$21.30**

• Container Deposits Additional Charge
FREE DELIVERY within 40 MILE RADIUS



C.E. LUTZ, INC.

30 N. MARKET ST.
ELIZABETHTOWN, PA. 17022

PH: (717) 367-1438
(717) 653-2780