

Sire Power bulls classified

TUNKHANNOCK — Sixty-one Holstein bulls owned by Sire Power, Inc., and housed at Tunkhannock headquarters were recently classified by official Holstein-Friesian Classifier, Donald Cook.

Ranked as a new Excellent bull is 9H599 SPIRIT, classified EX(90) being raised from VG (86). SPIRIT is a highly proven triple plus bull with +1660m, +.09% and +1.16 P.D. Type. Also highlighting the classification is 9H107 JET STREAM who is now EX (91) at 14 years old. JET STREAM's credentials of +2104M -.21% +43f +\$217 and +0.41 P.D. Type makes him one of the elite sires in the Holstein breed. The popular 9H584 CHAIRMAN, No. 1 TPI sire, remained at a strong VG (86).

Other bulls also increased their Excellent rating above EX (90). An outstanding stature bull, 9H622 STEWART, is now EX (93), and one of the highest classified bulls at Sire Power. Two other bulls raised in score were 9H629 CHUCK, EX(92), and 9H801 RECKERS, EX(91).

Bulls that remained at EX(90) are 9H176 TRUMP and 9H561 TERENCE.

Three JET STREAM sons in the line-up had increases in

classification. They are: 9H614 SCOUT, VG (85); 9H619 HELOIS, VG (85), and 9H608 HAMLET was classified VG (86) with a permanent score.

The Red and White Holstein, 9H617 MAG CHIEF, increased his score to VG (87).

A January '83 graduate, 9H628 SENSATION, was raised to VG(89), and two outstanding young bulls, 9H652 LOYAL and 9H659 TIMOTHY both scored VG (88).

The total program of performance results are: Top 9 milk bulls average +2023 P.D. Milk and are Plus on Type; 11 bulls are over +\$200 Profitability; 14 bulls are over +1.00 P.D. Type; and 8 bulls are Plus on Test.

The 32 proven Holstein sires have average Predicted Difference figures of +1576m -.07% +46f +\$186 with 76% repeatability. All bulls received an HFA Type Summary with an average Predicted Difference for Type of +.87 and 76% Repeatability.

Sire Power offers complete breeding programs through Professional Technician or Direct Herd Service, with sires to fit any situation whether emphasis is on production, type, or test.

Farm toy show, sale held

WILLOW STREET — The first Lancaster Farm Toy Show was held last month with an auction and a show and sale.

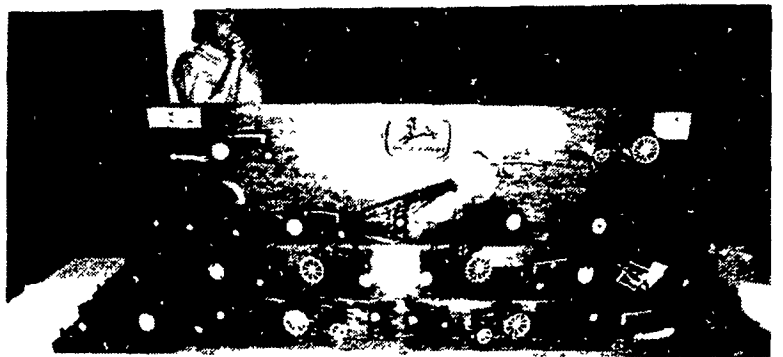
The auction was attended by more than 300 persons. Over 230 toys were consigned for sale. The auction started at 7 p.m. and lasted past 10:30 p.m.

The average price for all toys was more than \$45 per piece. Many models sold between \$100 & \$200.

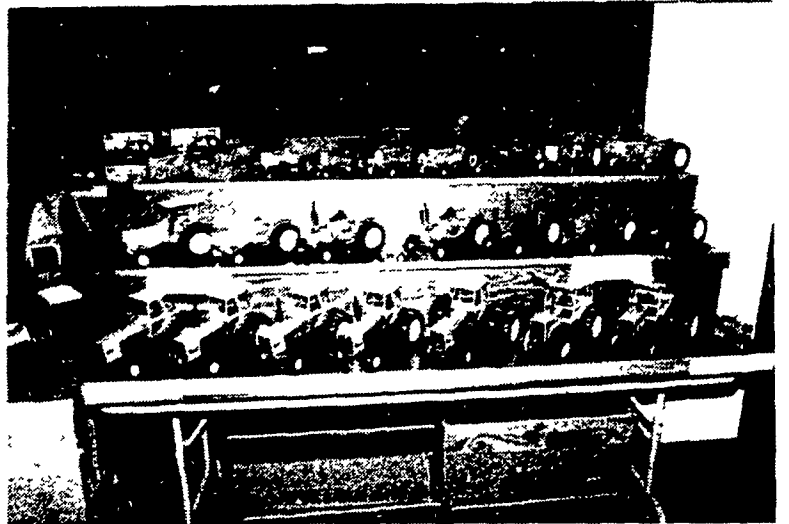
Models included old hard-to-get models, such as a cast iron Farmall A, John Deere A, John Deere 60, Oliver 77, to current collector series models. Many pieces of farm toy equipment were included in the auction. Robert & Jeff Martin were the auctioneers.

A total of 11 collectors set up their collections for display. Collections included John Deere, International, Case, Allis Chalmers and White. One collector included a variety of very hard-to-get rare models. Twenty dealers were set up offering items for trade and sale. In excess of 400 people attended the show.

The second annual Lancaster Farm Toy Show will be held on March 30 & 31, 1984.

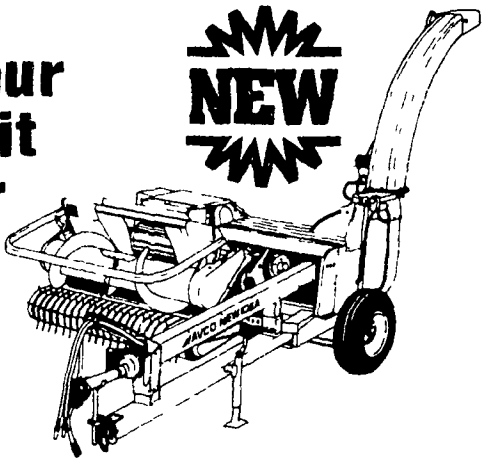


Farm toy exhibits include antique models, such as these John Deere pieces.



Modern tractors are featured in farm toy exhibits.

Here's Your Free Profit Harvester Checklist



Look for high performance pull choppers with:

- ✓ Two models to choose from— 2 or 3-row harvesting capacity... up to 90" hay pickup
- ✓ Convenient electrical controls that eliminate ropes, levers and cranks
- ✓ Row crop heads that easily interchange with either a 72 or 90-inch hay pickup
- ✓ Power efficient, fuel-saving, 12-knife cutterhead that can fine chop without fuel-robbing re-cutter screens

Look for all these advantages and find... Avco New Idea pull-type forage harvesters. See us soon for all the facts.

CUSTOMER CASH REBATES AS FOLLOWS:

- 507/509 Mower Conditioner \$1000
- 660/680 Forage Harvester w/Head. 1000
- 555/565 Baler - Rectangular 500
- 484/486 Round Baler 300
- 272/279 Cut/Ditioner 200

Watch For Our Hay Day Demonstration On
Thurs., June 2nd At The Glenn Zimmerman Farm

AVCO NEW IDEA

HEISEY FARM EQUIPMENT SALES, SERVICE & PARTS

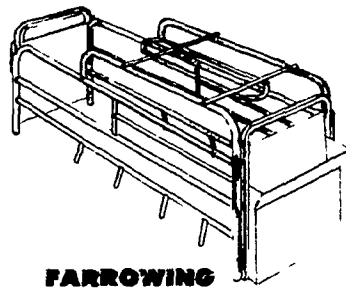
RD 1, Box 2294 Jonestown, PA 17038
(717) 865-4526

Located 1/2 Mi. So. of Fredericksburg off Rt. 343 in Shirksville
Business Hours: 7 AM - 5 PM Daily, Sat. til Noon,
Evenings by Appt.

Are You Ready To Go Whole Hog? Try Hershey's Hog Systems!

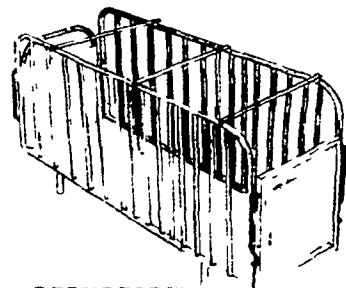
- Breeding • Gestation • Farrowing
- Nursery • Growing • Finishing

It takes a lot of planning, knowledge and experience to develop a profitable confinement operation. Hershey Equipment Co. will assist you in the planning and recommend the most efficient arrangement of equipment. This service we provide will blend the building and equipment together to form a practical, labor saving, economical hog system for top quality hogs.



FARROWING

Farrowing Systems
are designed with both the sow and farmer in mind.

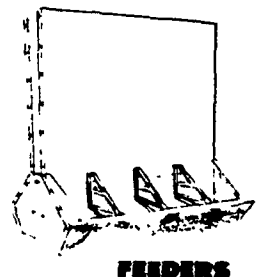


GESTATION

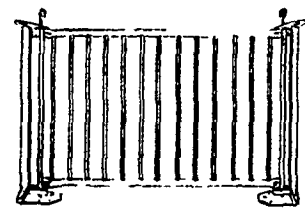
Nursery Systems
include pig rearing cages or penning equipment

Gestation Systems
reduce stress and the opportunity for fighting

Finishing Systems
are designed using top quality penning and feeders.



FEEDERS



PENNING

WE HAVE YOUR SYSTEM: • WE PRICE IT RIGHT • WE INSTALL IT RIGHT
• WE BUILD IT RIGHT • WE SERVICE IT RIGHT



H
HERSHEY EQUIPMENT
COMPANY, INC.

SYCAMORE IND. PARK
255 PLANE TREE DRIVE
LANCASTER PA 17603
(717) 393 5807

Route 30 West of
the Centerville Exit

DESIGNERS OF QUALITY SYSTEMS FOR POULTRY, SWINE & GRAIN HANDLING.