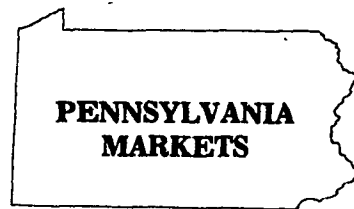


Livestock market and auction news



Lebanon Valley Auction

Fredericksburg, Pa.
Tuesday, April 19
Report Supplied By PDA

CATTLE 208. Compared with last Tuesday's market, slaughter steers unevenly steady. Slaughter cows steady to weak, spots \$1 lower. Few High Choice & Prime No. 3-4 1130-1230 lbs. slaughter steers 66.35-68.10, Choice No. 2-4 1055-1300 lbs. 62.35-67.50, Good 59.75-62.50, Good & Choice holsteins 56.50-59.35, few 60.50, Standard 54.25-56.75, few Utility & Low Standard 45.50-54.00. Couple Choice slaughter heifers 60.00 and 60.85, few Good 54.85-58.00, few Standard 51.10-55.10. Utility & Commercial slaughter cows 44.00-45.85, few 48.75, Cutters 40.35-43.85, Canner & Low Cutter 35.75-40.75, few Shells down to 23.50. One Good slaughter bullock at 54.25, couple Standard 48.00 and 52.25. Yield Grade #1 1145-1785 lbs. slaughter bulls 52.00-55.35, one at 57.10.
CALVES 141. Vealers grading Standard & Good unevenly steady.

Few Choice vealers 82.00-96.00, few Good 70.00-80.00, Standard & Good 90-110 lbs. 59.00-64.00, 65-85 lbs. 49.00-58.00, few Utility 50-65 lbs. 35.00-45.00. Farm calves, holstein bulls 90-120 lbs. 68.00-100.00, mostly 80.00-93.00; few beef cross bull & heifers 80-95 lbs. 61.00-86.00.

HOGS 119. Barrows & gilts steady to 50 cents higher. US No. 1-2 210-250 lbs. barrows & gilts 47.35-48.25, few 200-210 lbs. 45.25-47.00, No. 1-3 225-250 lbs. 47.00-47.75, few No. 2-3 290-360 lbs. 43.00-43.25. US No. 1-3 275-55 lbs. sows 42.00-43.75, few Medium 235-355 lbs. 35.00-38.00. Few Boars 33.50-40.00.

FEEDER PIGS 14. Few US No. 1-3 50-70 lbs. feeder pigs 50.00 cwt.

SHEEP 18. Few Choice 35-75 lbs. spring slaughter lambs 65.00-99.00, few Utility & Good 50-140 lbs. wooled slaughter lambs 38.00-40.00. Slaughter sheep 13.00-25.00.

Eighty-four Auction

Eighty-four, Pa.
Monday, April 18
Report Supplied By PDA
CATTLE 301. Compared with

last Monday's market, slaughter steers \$1.50 to mostly \$2 higher. Slaughter cows steady to strong. Choice slaughter steers 65.25-69.50, Good 60.00-65.00, Standard 56.25-60.25, few Utility 54.00-56.50. Few Choice slaughter heifers 60.00-62.00, Good 58.00-61.00, Standard 53.00-56.00, few Utility 49.00-54.00. Utility & Commercial slaughter cows 43.25-48.00, few 48.50-49.50, Cutters 40.25-43.50, Canner & Low Cutter 35.00-41.00, Shells down to 25.00. Yield Grade #1 1200-1870 lbs. slaughter bulls 50.00-56.00; few yield grade #2 900-1400 lbs. 45.00-49.00. Medium Frame #1 450-650 lbs. feeder steers 58.00-68.00; Medium Frame #1 400-700 lbs. feeder heifers 48.00-55.00, few Large Frame #1 550 lbs. at 55.50; few Medium Frame #1 600-700 lbs. feeder bulls 52.00-56.00.

CALVES 240. Vealers unevenly steady. Choice vealers 91.00-112.00, Good 78.00-92.00, Standard & Good 90-120 lbs. 49.00-80.00, 60-85 lbs. 40.00-51.00. Farm Calves holstein bulls 90-130 lbs. 60.00-88.00.

HOGS 111. Barrows & gilts 50

cents to 75 cents lower. US No. 1-2 2-250 lbs. barrows & gilts 47.50-48.25, No. 1-3 197-256 lbs. 46.00-47.60, few No. 2-3 220-230 lbs. 43.75-44.25, lot No. 1-3 133 lbs. at 47.00. Few US No. 1-3 400-500 lbs. sows 46.00-48.00, few No. 2-3 500-650 lbs. 45.00-46.00.

FEEDER PIGS 17. Few US No. 1-3 95 lbs. feeder pigs 47.00 per head, few Utility 25-40 lbs. 12.00-16.00 per head.

SHEEP 228. Choice 47-65 lbs. spring slaughter lambs 79.00-86.00, 70-105 lbs. shorn lambs 72.00-76.00, few Good 35-40 lbs. spring slaughter lambs 75.00-79.00, few 65-86 lbs. wooled slaughter lambs 60.00-62.00, few Utility 27-30 lbs. spring lambs 59.00-60.00, few 38-60 lbs. wooled lambs 30.00-39.00. Slaughter sheep 15.00-26.25. **GOATS 25.** 9.00-39.00 per head.

45.00, few Utility 50-80 lbs. 14.00-30.00. Farm calves, holstein bulls 95-130 lbs. 60.00-73.00; holstein heifers 85-120 lbs. 55.00-70.00.

HOGS 649. Barrows & gilts weak to 50 cents lower. US No. 1-2 210-250 lbs. barrows & gilts 46.35-47.25, No. 1-3 200-250 lbs. 45.50-46.50, No. 2-3 210-275 lbs. 42.00-45.50, No. 1-3 130-195 lbs. 38.00-44.00. Sows steady to strong. US No. 1-3 280-550 lbs. sows 42.00-49.00. Boars 37.00-40.00.

FEEDER PIGS 25. Few US No. 1-3 15-25 lbs. feeder pigs 13.00-30.00 per head, few No. 1-3 35-45 lbs. 35.00-39.00 per head.

SHEEP 193. Choice 50-75 lbs. spring slaughter lambs 53.00-65.00, few 70.00-81.00, 80-120 lbs. 76.00-78.00, Good 50-105 lbs. 48.00-60.00. Slaughter ewes 7.00-25.00.

Joliet Cattle

Thursday, April 21
Report supplied by USDA

CATTLE: Friday through Wednesday's salable receipts 3,000; 5 days last week 2,460, same period a year ago 2,395. Trading slow for the week. Slaughter Steers ended the week 1.00-2.00 lower compared with Wednesday of last week. Slaughter Heifers ended the week 1.00-1.50, instances 2.00 lower. Cows closed the week steady.

SLAUGHTER STEERS: Mixed Choice and Prime 2-4 1150-1350 lbs. 69.00-70.00 Monday; 67.50-68.50 Wednesday. Choice 2-4 1050-1300 lbs. 68.00-69.50 Monday; 66.00-68.25 Wednesday. Mixed Good and Choice 2-3 1000-1400 lbs. 66.50-68.00 Monday; 65.00-66.00 Wednesday. Mixed Good and Choice 2-3 1200-1400 lbs. Holsteins 56.00-60.00 Monday.

SLAUGHTER HEIFERS: Mixed Choice and Prime 3 to mostly 4 1050 lbs. load 68.00 Monday. Choice 2-4 900-1100 lbs. 65.50-67.25 Monday; 64.75-66.00, load 66.50 Wednesday. Mixed Good and Choice 2-3 850-1000 lbs. 64.00-65.50 Monday; 63.00-64.50 Wednesday. Good 2-3 850-1000 lbs. 60.00-62.50.

COWS: Canner & Low Cutter 1-3 35.00-40.00.

New Wilmington Auction

New Wilmington, Pa.
Monday, April 18
Report Supplied By PDA

CATTLE 226. Compared with last Monday's market, slaughter cows 50 cents to \$1 lower. Few Choice slaughter steers 63.00-66.00, few Good 60.25-62.00, Standard 53.25-58.50, few Utility 49.75-52.25. Few Choice slaughter heifers 60.00-64.50, one at 66.00, few Good 55.00-58.75. Utility & Commercial slaughter cows 42.50-45.50, couple 46.75-47.00, Cutters 39.50-43.25, Canner & Low Cutter 30.00-39.75. One Choice slaughter bullock at 60.00. Yield Grade #1 1410-1860 lbs. slaughter bulls 53.00-59.75; couple yield grade #2 1060 and 1415 lbs. 43.75 and 50.00. Medium & Large Frame #1 300-585 lbs. feeder steers 58.00-66.00; Medium & Large Frame #1 320-600 lbs. feeder heifers 47.50-55.00; Medium & Large Frame #1 510-825 lbs. feeder bulls 46.00-53.00.

CALVES 223. Vealers strong to \$5 higher. Few Prime vealers 114.00-120.00, Choice 92.00-111.00, Good 78.00-92.00, Good 120-150 lbs. 70.00-80.00, Standard & Good 90-120 lbs. 45.00-62.00, 65-85 lbs. 34.00-

KING'S AUCTION, KIRKWOOD

Hay, Straw and Grain Auction Every

1ST AND 3RD TUESDAY OF THE MONTH

12:00

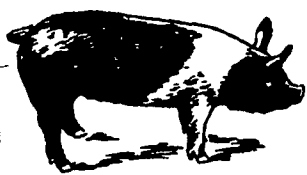
Located Rt. 472 5 miles south of Quarryville or 6 miles north of Oxford at Shaub's Auction House.

No out of state checks accepted without bank approval
ALL TRUCKERS AND FARMERS WELCOME

Quality Feeder Pigs For Sale

Let us show you a barn full of our quality feeder pigs at different stages of growth (near you).

Call Collect
Fred Patterson
615-274-2246



EMERY'S
BUYING
STATION

OPEN TO RECEIVE
YOUR MARKET HOGS

AT THE GREEN DRAGON MARKET
RD 4, EPHRATA, PA 17522
1 MILE NORTH OF EPHRATA
ON NORTH STATE STREET.

HOURS
MONDAY, TUESDAY, and
WEDNESDAY
6:00 A.M. to 11:30 A.M.

215-458-5677 Residence
717-733-9648 Office

YOU ARE PAID FOR YOUR
HOGS IMMEDIATELY

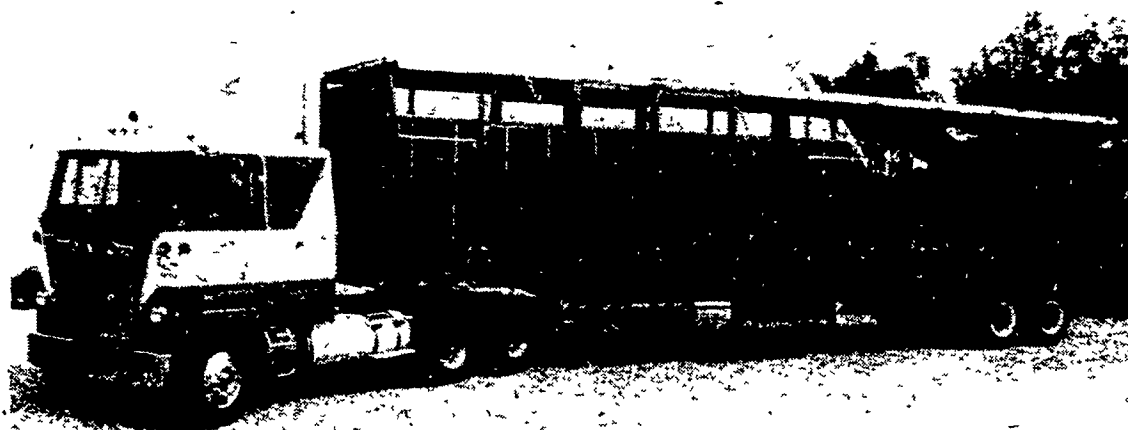
Ken & Lois Emery, Proprietors

For quotations of next week's prices
call collect 215-488-7617

PA WATTS NUMBER
800-342-2249

LESS LABOR

VERY
SANITARY



LESS DOA'S

LESS COND.

Buyers of Leghorn Fowl!

SECHLER'S POULTRY, INC.

Box G, Strausstown, PA 19559

SCOTT SECHLER

RICHARD SECHLER

NELSON LEGG

BEEFALO FOR SALE

-Semen in stock

-1/2, 3/4, 7/8 animals

BEEFALO
N & J

4270

Quakerbridge Rd.

Princeton, NJ 08540

609-896-0336

CATTLE HAULING

* Straight
Truck and

* Tractor
Trailer
Available

Call
717-665-7953